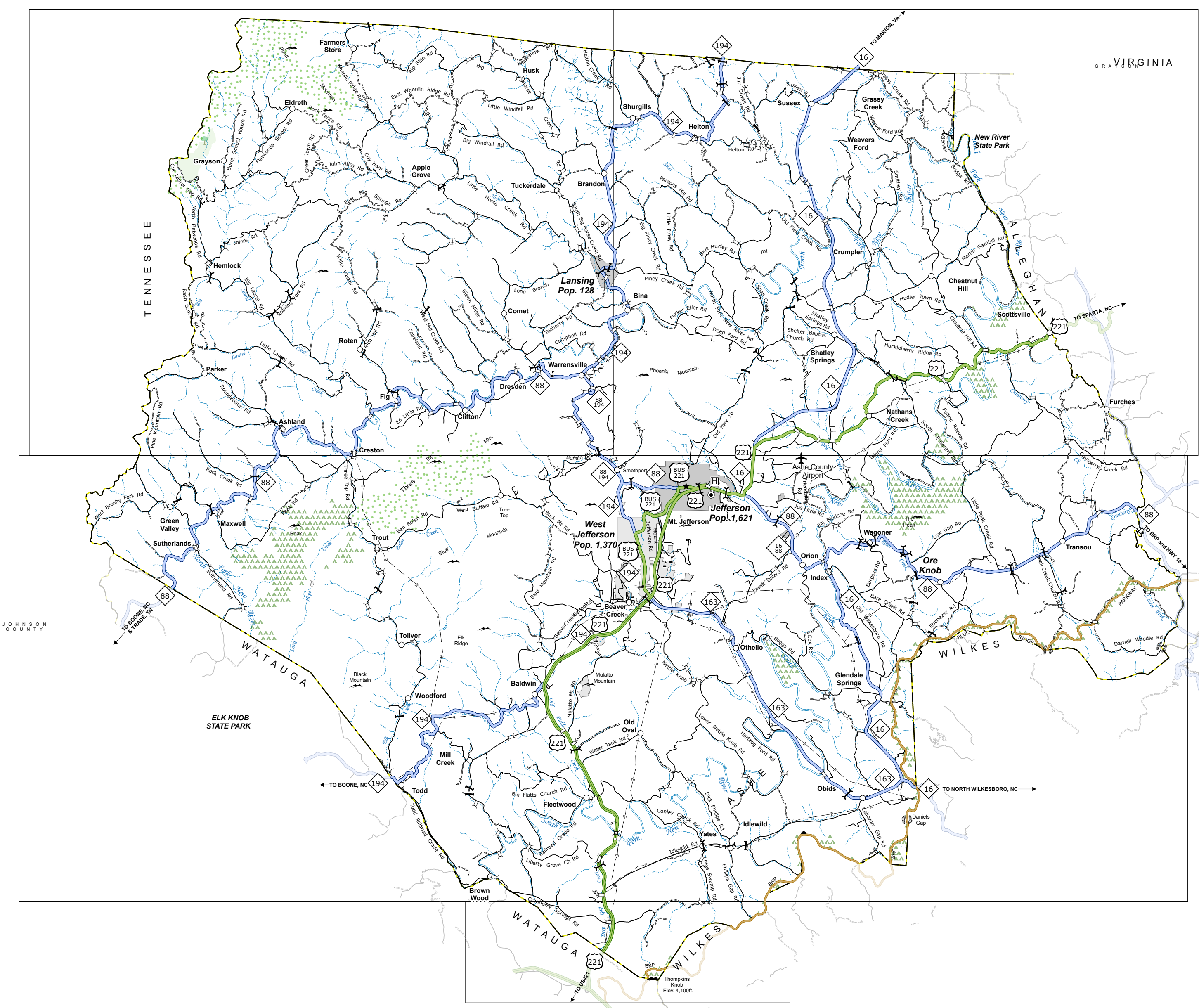
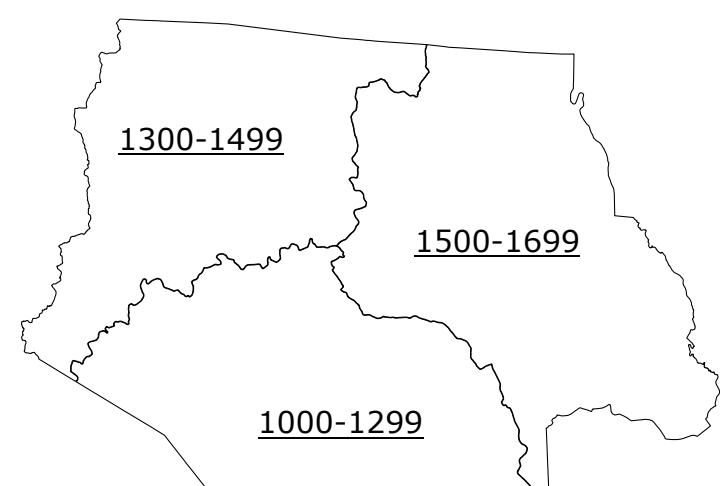
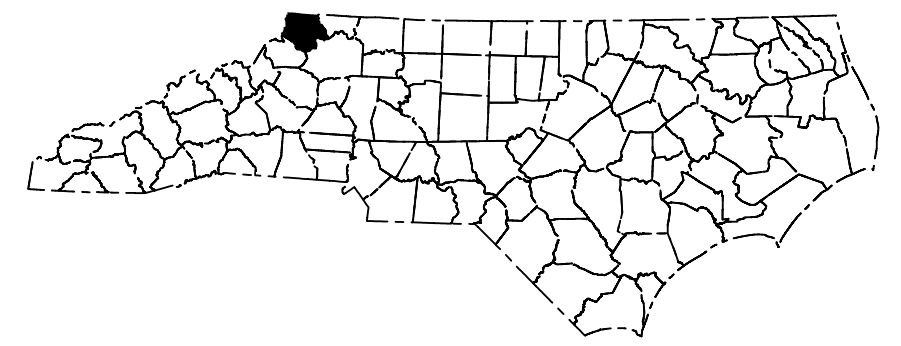
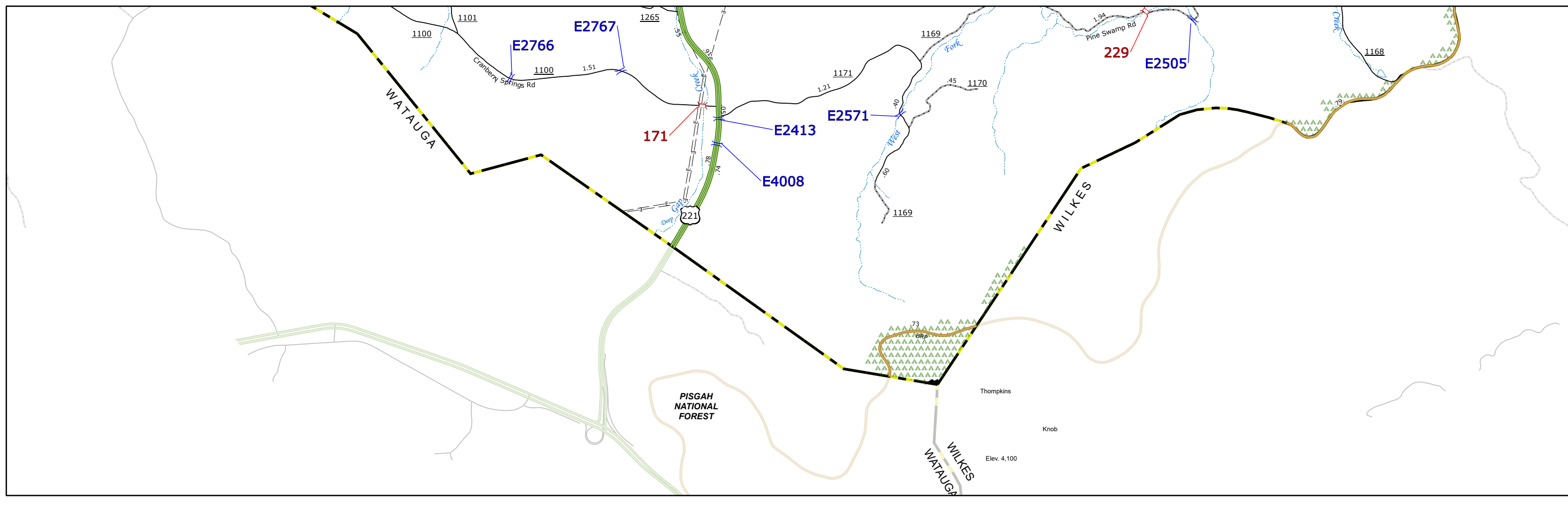


- BRIDGE
- CITY BRIDGE
- CITY SIGN
- "C" CITY CULVERT
- "C" CULVERT
- DRAW BRIDGE
- "D" PEDESTRIAN BRIDGE
- "E" NON-NBIS PIPE
- "F" FERRY RAMP
- "G" FEDERAL BRIDGE
- "H" NON-SYSTEM MAINT BY NCDOT
- "L" CANTILEVER SIGN
- "M" PRIVATE STRUCTURE
- "N" NCDOT OVERPASS STRUCTURE
- "O" PAVEMENT ON PILES
- "P" CITY PIPE
- "P" PIPE
- "R" RAILROAD BRIDGE
- "S" OVERHEAD SIGN
- "T" TUNNEL
- "U" PEDESTRIAN UNDERPASS
- "V" VEHICULAR UNDERPASS
- "W" PEDESTRIAN WALKWAY
- "Y" T-POLE SIGN



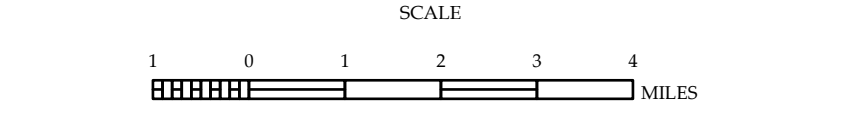
LEGEND

- INTERSTATE US NC Divided Hwy Undivided Hwy
- ROUTE BRIDGE PARKWAY
- UNPAVED SURFACED ROAD
- HARD SURFACED ROAD
- NON-SYSTEM ROAD
- PROVISIONALLY OPEN ROAD
- PROJECTED LOCATION
- INTERSECTION DISTANCE
- INTERSTATE HIGHWAY
- US NUMBERED HIGHWAY
- N.C. NUMBERED HIGHWAY
- U.S. NUMBERED BICYCLE ROUTE
- N.C. NUMBERED BICYCLE ROUTE
- INTERSTATE INTERCHANGE NUMBER
- SECONDARY ROAD NUMBER
- UTILITY LINES
- RAILROAD LINE
- RAILROAD STATION
- INLET AREA
- STATE LINE
- SMOOTHED URBAN BOUNDARIES
- CITY LIMITS
- FERRY ROUTE AND RAMP
- NARROW CREEK OR STREAM
- WIDE RIVER OR CREEK
- RESERVOIR, POND OR LAKE W/ ISLAND
- DAM OR DAM WITH LOCK
- WATERFALL
- SWAMP
- COMMUNITY
- COUNTY SEAT
- SCHOOL
- COLLEGE OR UNIVERSITY
- HOSPITAL
- COAST GUARD STATION
- CHURCH
- CHURCH WITH CEMETERY
- CEMETERY
- PARISH STATION
- CORRECTION OR PENAL INSTITUTION
- QUARRY
- MINE OR PIT
- HIGHWAY GARAGE OR MAINT. YARD
- HIGHWAY DIV. OR DIST. OFFICE
- MILITARY POST
- WEIGH STATION
- FAIRGROUNDS
- HISTORICAL SITE
- POINTS OF INTEREST
- POST OFFICE
- STATE FOREST
- LIGHTHOUSE
- MOUNTAIN SUMMIT
- MOUNTAIN GAP
- OVERLOOK
- REST AREA
- VISITOR CENTER REST AREA
- WELCOME CENTER REST AREA
- AIRPORT
- MILITARY AIRPORT
- NATIONAL STATE FOREST BOUNDARY
- WILDLIFE REFUGE
- NATIONAL STATE PARK BOUNDARY
- GAME LANDS BOUNDARY
- MILITARY RESERVATION BOUNDARY
- INDIAN RESERVATION BOUNDARY



ASHE COUNTY NORTH CAROLINA BRIDGE LOCATION MAP

PREPARED BY THE NORTH CAROLINA DEPARTMENT OF TRANSPORTATION OPERATIONS PROGRAM MANAGEMENT UNIT - MAPPING SECTION IN COOPERATION WITH THE U.S. DEPARTMENT OF TRANSPORTATION FEDERAL HIGHWAY ADMINISTRATION



SCALE FOR ENLARGEMENTS 1 0 1 2 3 4 MILES

NORTH CAROLINA PLANE COORDINATE SYSTEM LAMBERT CONFORMAL CONIC PROJECTION SHEET 1 OF 5

TERMS OF USE: The Mapping Section's goal is to provide the most accurate and current information possible. Map data is compiled from numerous sources with varying dates of publication and map accuracy standards. As a result, the accuracy, currency, and completeness of the data provided will vary. The North Carolina Department of Transportation shall not be held liable for any errors in the map data. This map cannot be construed to be a legal document. The information shown on this map was last updated in July 2024. For digital copies of this map or additional map products, visit https://connect.ncdot.gov/resources/StateMapping

COPIES OF THIS MAP ARE AVAILABLE TO THE PUBLIC AT NO CHARGE. CONTACT US TO ORDER: 1-800-368-3343