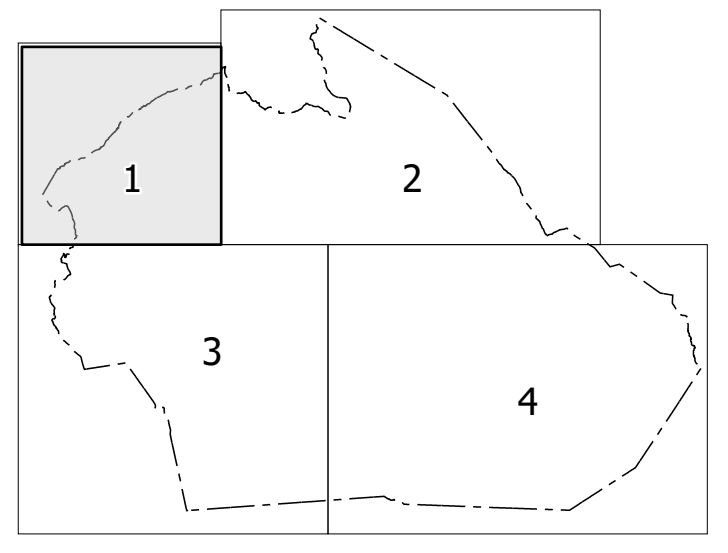


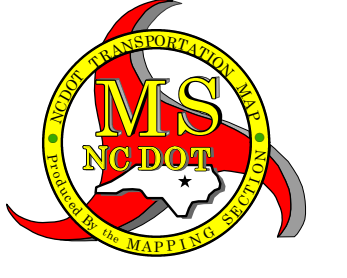
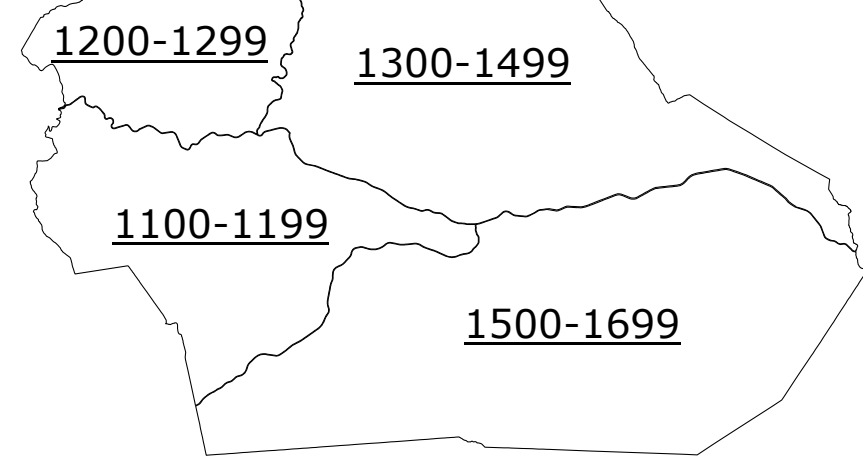
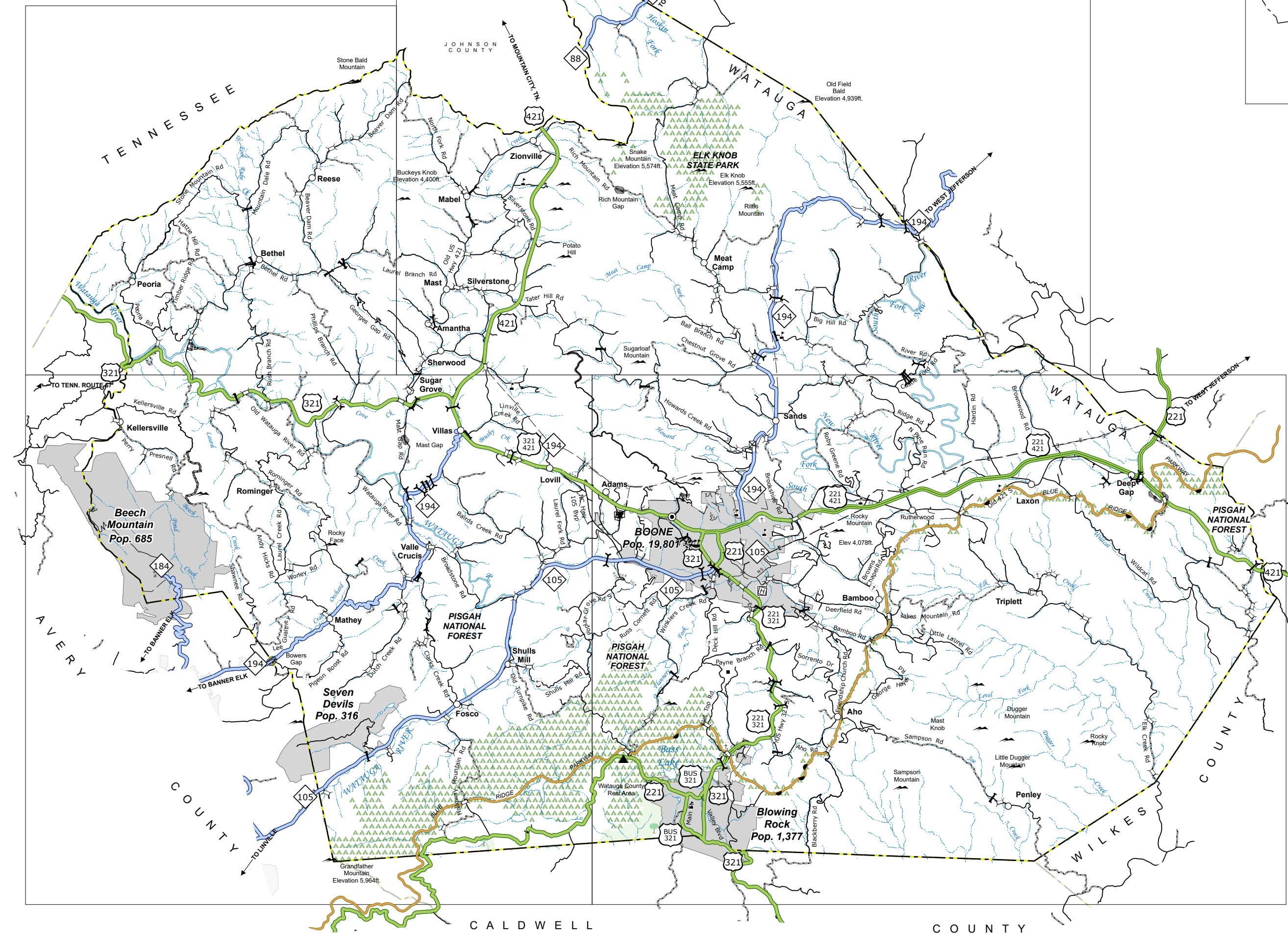
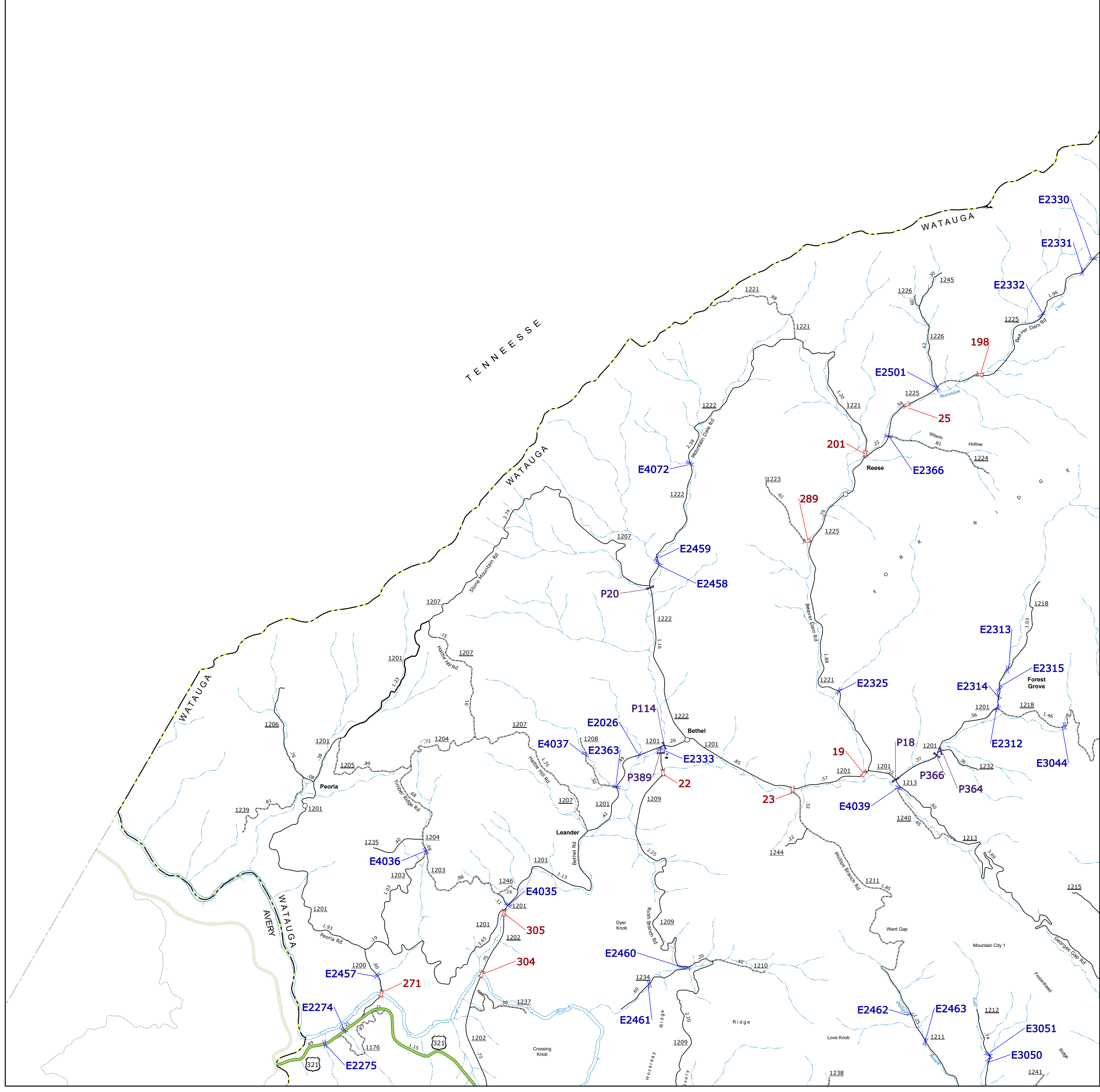
Sheet Key



LEGEND

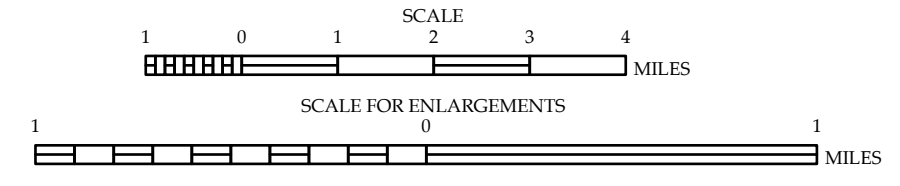
- INTERSTATE US NC Divided Hwy
- UNPAVED SURFACED ROAD
- HARD SURFACED ROAD
- NON-SYSTEM ROAD
- PROVISIONALLY DRAWN ROAD
- PROJECTED LOCATION
- INTERSECTION DISTANCE
- INTERSTATE HIGHWAY
- U.S. NUMBERED HIGHWAY
- N.C. NUMBERED HIGHWAY
- U.S. NUMBERED BICYCLE ROUTE
- N.C. NUMBERED BICYCLE ROUTE
- INTERSTATE INTERCHANGE NUMBER
- SECONDARY ROAD NUMBER
- TELEPHONE
- UTILITY LINES
- RAILROAD LINE
- RAILROAD STATION
- INSET AREA
- STATE LINE
- COUNTY LINE
- SMOOTHED URBAN BOUNDARIES
- CITY LIMITS
- FERRY ROUTE AND RAMP
- NARROW CREEK OR STREAM
- WIDE RIVER OR CREEK
- RESERVOIR, POND OR LAKE W/ ISLAND
- DAM OR DAM WITH LOCK
- WATERFALL
- SWAMP
- COMMUNITY
- COUNTY SEAT
- SCHOOL
- COLLEGE OR UNIVERSITY
- HOSPITAL
- COAST GUARD STATION
- CHURCH
- CHURCH WITH CEMETERY
- CEMETERY
- PATROL STATION
- CORRECTION OR PENAL INSTITUTION
- QUARRY
- MINE OR PIT
- HIGHWAY GARAGE OR MAINT. YARD
- HIGHWAY DIV. OR DIST. OFFICE
- MILITARY POST
- WEIGH STATION
- FAIRGROUNDS
- HISTORICAL SITE
- POINTS OF INTEREST
- POST OFFICE
- STATE FOREST
- LIGHTHOUSE
- MOUNTAIN SUMMIT
- MOUNTAIN GAP
- OVERLOOK
- REST AREA
- VISITOR CTR. REST AREA
- WELCOME CTR. REST AREA
- AIRPORT
- MILITARY AIRPORT
- NATIONAL / STATE FOREST BOUNDARY
- WILDLIFE REFUGE
- NATIONAL / STATE PARK BOUNDARY
- GAME LANDS BOUNDARY
- MILITARY RESERVATION BOUNDARY
- INDIAN RESERVATION BOUNDARY

- BRIDGE
- CITY BRIDGE
- CITY SIGN
- "C" CITY CULVERT
- "C" CULVERT
- DRAW BRIDGE
- "D" PEDESTRIAN BRIDGE
- "E" NON-NBIS PIPE
- "F" FERRY RAMP
- "G" FEDERAL BRIDGE
- "H" NON-SYSTEM MAINT BY NCDOT
- "L" CANTILEVER SIGN
- "M" PRIVATE STRUCTURE
- "N" NCDOT OVERPASS STRUCTURE
- "O" PAVEMENT ON PILES
- "P" CITY PIPE
- "P" PIPE
- "R" RAILROAD BRIDGE
- "S" OVERHEAD SIGN
- "T" TUNNEL
- "U" PEDESTRIAN UNDERPASS
- "V" VEHICULAR UNDERPASS
- "W" PEDESTRIAN WALKWAY
- "Y" T-POLE SIGN



# WATAUGA COUNTY NORTH CAROLINA BRIDGE LOCATION MAP

PREPARED BY THE  
NORTH CAROLINA DEPARTMENT OF TRANSPORTATION  
OPERATIONS PROGRAM MANAGEMENT UNIT - MAPPING SECTION  
IN COOPERATION WITH THE  
U.S. DEPARTMENT OF TRANSPORTATION  
FEDERAL HIGHWAY ADMINISTRATION



NORTH CAROLINA PLANE COORDINATE SYSTEM  
LAMBERT CONFORMAL CONIC PROJECTION

STATE OF NORTH CAROLINA  
NORTH CAROLINA DEPARTMENT OF TRANSPORTATION  
OPERATIONS PROGRAM MANAGEMENT UNIT - MAPPING SECTION  
10170 STATE ST.  
RALEIGH, NC 27617  
WWW.NCDOT.GOV

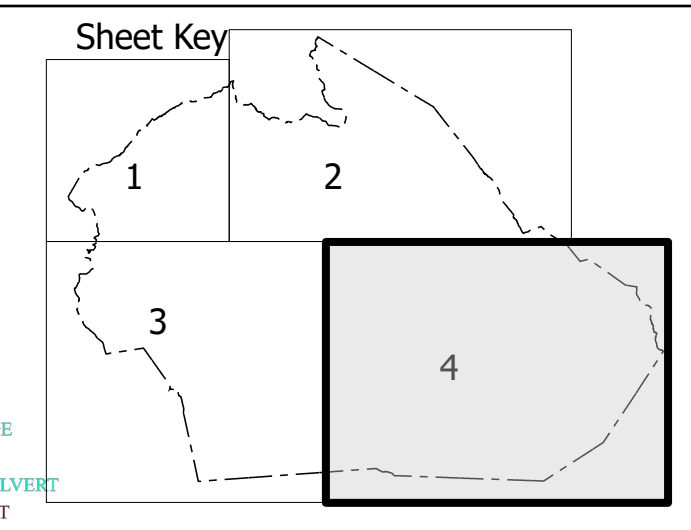
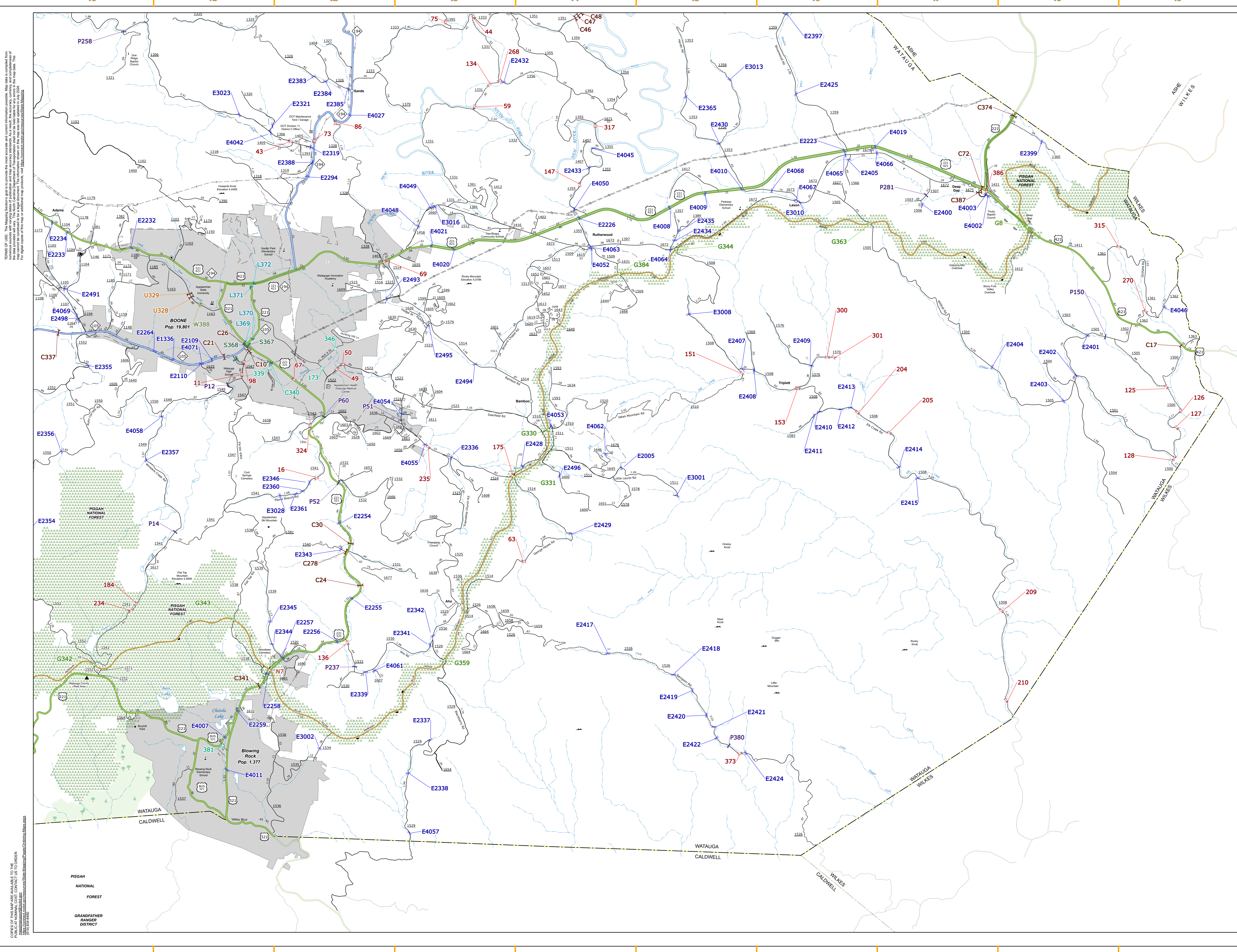




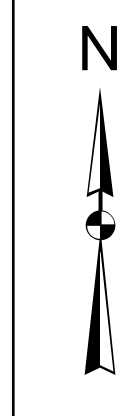








- LEGEND**
- BRIDGE
  - CITY BRIDGE
  - CITY SIGN
  - CITY CULVERT
  - CULVERT
  - DRAW BRIDGE
  - PEDESTRIAN BRIDGE
  - NON-NBS PIPE
  - FERRY RAMP
  - FEDERAL BRIDGE
  - NON-SYSTEM MAINT BY NCDOT
  - CANTILEVER SIGN
  - PRIVATE STRUCTURE
  - NCDOT OVERPASS STRUCTURE
  - PAVEMENT ON FILES
  - CITY PIPE
  - FIRE
  - RAILROAD BRIDGE
  - OVERHEAD SIGN
  - TUNNEL
  - PEDESTRIAN UNDERPASS
  - W.P.
  - T.F.
- INTERSTATE** US NC Divided Hwy Undivided Hwy
- BLUE RIDGE PARKWAY** UNPAVED SURFACED ROAD HARD SURFACED ROAD NON-SYSTEM ROAD PROVISIONALLY DRAWN ROAD PROJECTED LOCATION INTERSECTION DISTANCE
- INTERSTATE HIGHWAY** U.S. NUMBERED HIGHWAY N.C. NUMBERED HIGHWAY U.S. NUMBERED BICYCLE ROUTE N.C. NUMBERED BICYCLE ROUTE INTERSTATE INTERCHANGE NUMBER SECONDARY ROAD NUMBER
- UTILITY LINES** RAILROAD LINE RAILROAD STATION INSET AREA STATE LINE COUNTY LINE SMOOTHED URBAN BOUNDARIES CITY LIMITS
- FERRY ROUTE AND RAMP** FAIRWAYS, CREEK OR STREAM WIDE RIVER OR CREEK RESERVOIR, POND OR LAKE W/ ISLAND DAM OR DAM WITH LOCK WATERFALL SWAMP
- COMMUNITY** COUNTY SEAT SCHOOL COLLEGE OR UNIVERSITY COAST GUARD STATION CHURCH CHURCH WITH CEMETERY CEMETERY PATROL STATION CORRECTION OR PENAL INSTITUTION QUARRY MINE OR PIT HIGHWAY GARAGE OR MAINT. YARD MILITARY POST WEIGH STATION FAIRWAYS
- HISTORICAL SITE** POINTS OF INTEREST POST OFFICE STATE FOREST LIGHTHOUSE MOUNTAIN SUMMIT MOUNTAIN GAP OVERLOOK REST AREA VISITOR CTR/REST AREA WELCOME CTR/REST AREA AIRPORT MILITARY AIRPORT
- NATIONAL / STATE FOREST BOUNDARY** WILDLIFE REFUGE NATIONAL / STATE PARK BOUNDARY GAME LANDS BOUNDARY MILITARY RESERVATION BOUNDARY INDIAN RESERVATION BOUNDARY



**WATAUGA COUNTY**  
**NORTH CAROLINA**  
**BRIDGE LOCATION MAP**

PREPARED BY THE  
 NORTH CAROLINA DEPARTMENT OF TRANSPORTATION  
 OPERATIONS PROGRAM MANAGEMENT UNIT - MAPPING SECTION  
 IN COOPERATION WITH THE  
 U.S. DEPARTMENT OF TRANSPORTATION  
 FEDERAL HIGHWAY ADMINISTRATION

SCALE  
 0 1 2 MILES

NORTH CAROLINA PLANE COORDINATE SYSTEM  
 LAMBERT CONFORMAL CONIC PROJECTION

SHEET 4 of 4

TERMS OF USE: The Mapping Section shall provide the most accurate and current information possible. Map data is compiled from various sources and is not guaranteed to be 100% accurate. The user assumes all responsibility for any errors or omissions. This map is provided as a service to the public and is not intended for use in any legal proceeding. For a complete copy of this map or additional map products, visit [www.ncdot.gov](http://www.ncdot.gov).