

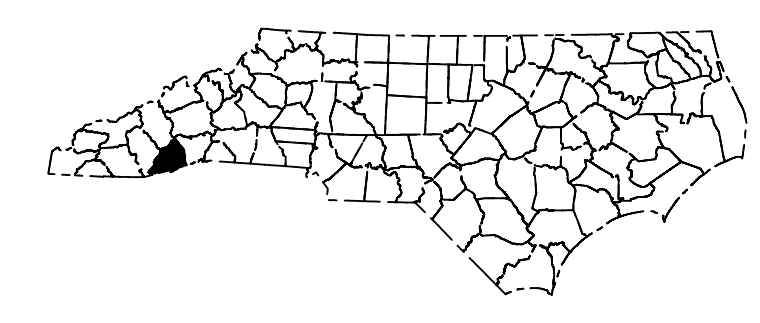
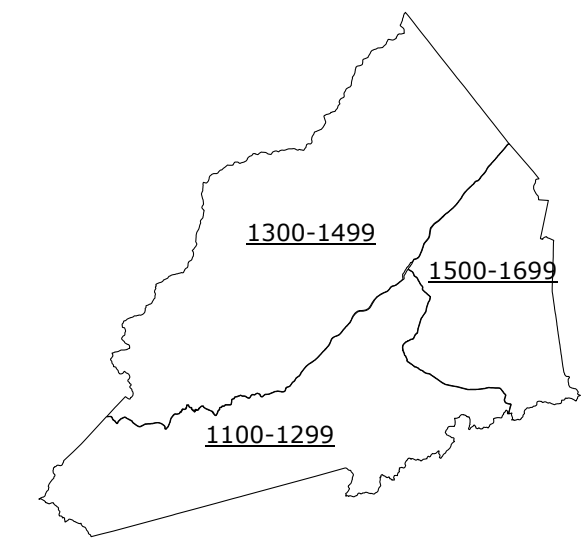
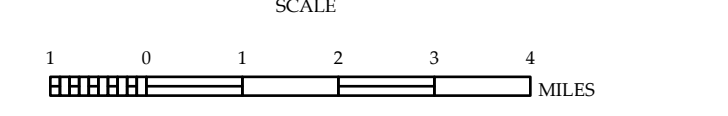
LEGEND

| | | | |
|--|----------------------------------|--|----------------------------------|
| | INTERSTATE HIGHWAY | | CITY BRIDGE |
| | INTERSTATE HIGHWAY | | CITY CULVERT |
| | INTERSTATE HIGHWAY | | CULVERT |
| | BLUE RIDGE PARKWAY | | STREAM BRIDGE |
| | UNIMPROVED ROAD | | PEDESTRIAN BRIDGE |
| | LEAD PAVED ROAD | | TERRY RAMP |
| | MOSS SYSTEM ROAD | | NON-MSB PIPE |
| | PROVISIONALLY PAVED ROAD | | FEDERAL BRIDGE |
| | PRIVATE TRACT LOCATION | | MSB SYSTEM MAINT BY NCDOT |
| | INTERSECTION BRIDGE | | CAST-IN-PLACE SLAB |
| | U.S. NUMBERED HIGHWAY | | PRIVATE STRUCTURE |
| | U.S. NUMBERED BICYCLE ROUTE | | CITY PIPE |
| | N.C. NUMBERED INTERCHANGE NUMBER | | RAILROAD BRIDGE |
| | SECONDARY ROAD NUMBER | | OVERHEAD SIGN |
| | RAILROAD LINE | | TUNNEL |
| | UTILITY LINES | | VEHICLE UNDERPASS |
| | RAILROAD STATION | | PEDESTRIAN WALKWAY |
| | DIST. AREA | | FERRY WCH |
| | STATE LINE | | NARROW CREEK OR STREAM |
| | COUNTY LINE | | WET EVER OR CREEK |
| | CITY LIMITS | | RESERVOIR, POND, LAKE, or ISLAND |
| | FERRY WCH | | DAM or DAM WITH LOCK |
| | NARROW CREEK OR STREAM | | WATERFALL |
| | WET EVER OR CREEK | | SWAMP |
| | RESERVOIR, POND, LAKE, or ISLAND | | COMMUNITY, TOWN or CITY CENTER |
| | DAM or DAM WITH LOCK | | COUNTY SEAT |
| | WATERFALL | | COLLEGE or UNIVERSITY |
| | SWAMP | | HOSPITAL |
| | COMMUNITY, TOWN or CITY CENTER | | COAST GUARD STATION |
| | COUNTY SEAT | | CHURCH |
| | COLLEGE or UNIVERSITY | | CHURCH WITH CEMETERY |
| | HOSPITAL | | CEMETERY |
| | COAST GUARD STATION | | PAROLE STATION |
| | CHURCH | | CORRECTION or PENAL INSTITUTION |
| | CHURCH WITH CEMETERY | | COURT |
| | CEMETERY | | MENT or PITT |
| | PAROLE STATION | | HIGHWAY GARAGE or MAIN YARD |
| | CORRECTION or PENAL INSTITUTION | | HIGHWAY DIV. or DIST. OFFICE |
| | COURT | | WILDLAND POINT |
| | MENT or PITT | | WEIGH STATION |
| | HIGHWAY GARAGE or MAIN YARD | | FAIRGROUNDS |
| | HIGHWAY DIV. or DIST. OFFICE | | HISTORICAL SITE |
| | WILDLAND POINT | | STATE FOREST |
| | WEIGH STATION | | SINKS or PONDS |
| | FAIRGROUNDS | | LIGHTHOUSE |
| | HISTORICAL SITE | | MOUNTAIN SUMMIT |
| | STATE FOREST | | OVERLOOK |
| | SINKS or PONDS | | BEST AREA |
| | LIGHTHOUSE | | VISITOR CTR. BEST AREA |
| | MOUNTAIN SUMMIT | | WILDLIFE TRACT AREA |
| | OVERLOOK | | AIRPORT |
| | BEST AREA | | MILITARY AIRPORT |
| | VISITOR CTR. BEST AREA | | HELIPAD |
| | WILDLIFE TRACT AREA | | NATIONAL STATE FOREST BOUNDARY |
| | AIRPORT | | WILDLIFE REFUGE |
| | MILITARY AIRPORT | | NATIONAL STATE PARK BOUNDARY |
| | HELIPAD | | GAME LANDS BOUNDARY |
| | NATIONAL STATE FOREST BOUNDARY | | MILITARY RESERVATION BOUNDARY |
| | WILDLIFE REFUGE | | INDIAN RESERVATION BOUNDARY |
| | NATIONAL STATE PARK BOUNDARY | | |
| | GAME LANDS BOUNDARY | | |
| | MILITARY RESERVATION BOUNDARY | | |
| | INDIAN RESERVATION BOUNDARY | | |



TRANSYLVANIA COUNTY NORTH CAROLINA BRIDGE LOCATION MAP

PREPARED BY THE
NORTH CAROLINA DEPARTMENT OF TRANSPORTATION
OPERATIONS PROGRAM MANAGEMENT UNIT - MAPPING SECTION
IN COOPERATION WITH THE
U.S. DEPARTMENT OF TRANSPORTATION
FEDERAL HIGHWAY ADMINISTRATION



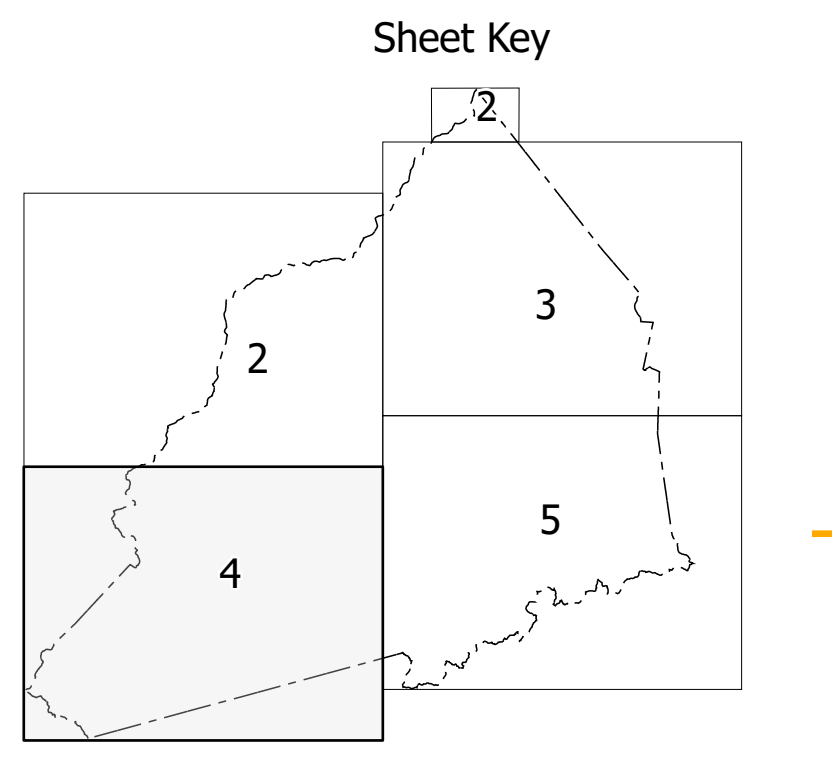
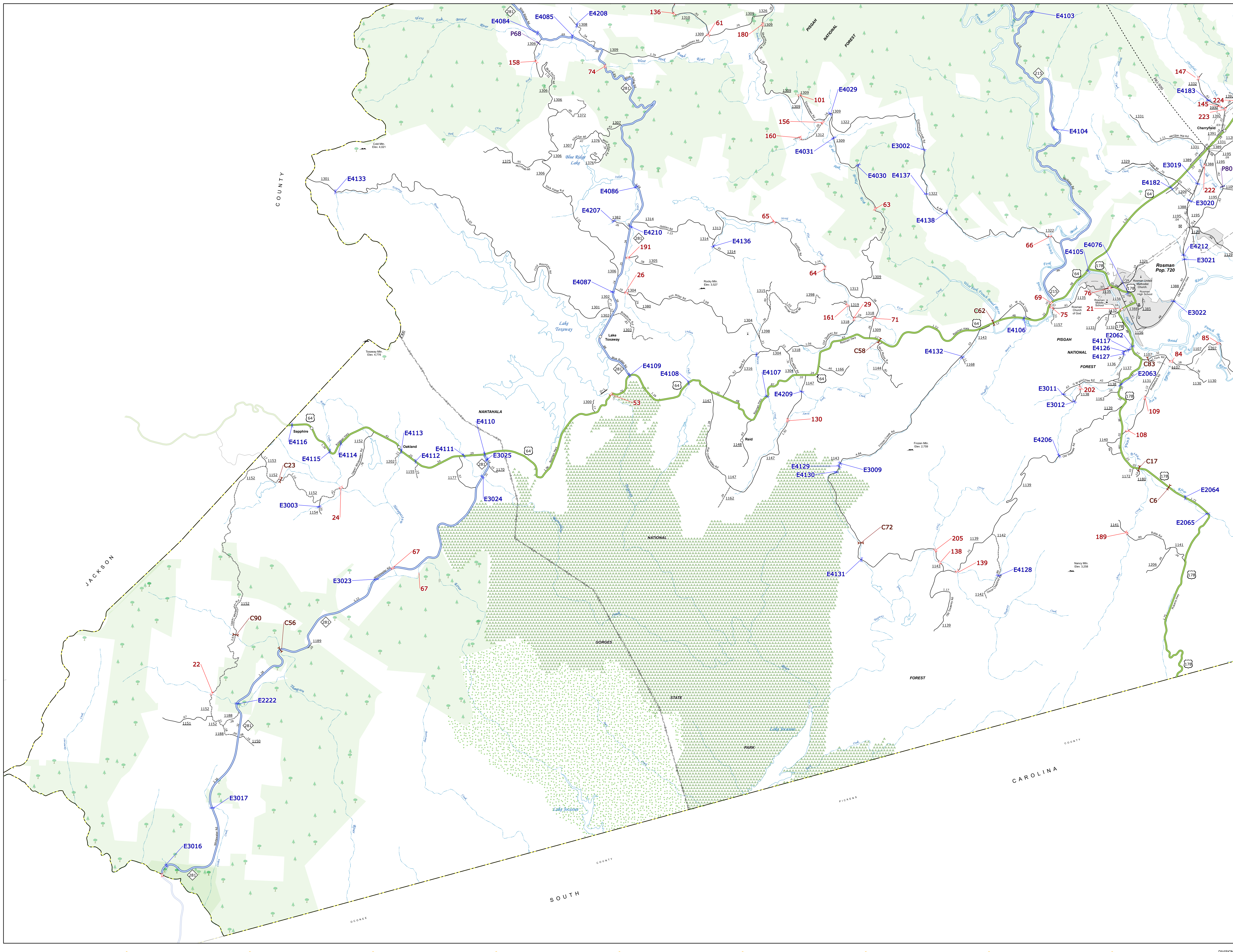
COPIES OF THIS MAP ARE AVAILABLE TO THE PUBLIC AT NOMINAL COST. CONTACT US TO ORDER: maps@ncdot.gov
<https://connect.ncdot.gov/resources/State-Mapping/Pages/Ordering-Maps.aspx>
(919) 834-4480

TERMS OF USE: The Mapping Sector's goal is to provide the most accurate and current information possible. Map data is compiled from numerous sources with varying dates of publication and map accuracy standards. As a result, the accuracy, currency, and completeness of the data provided will vary. The North Carolina Department of Transportation shall not be held liable for any errors in the map data. This map cannot be construed to be a legal document. The information shown on this map was last updated in July 2024. For digital copies of this map or additional map products, visit <https://connect.ncdot.gov/resources/State-Mapping>.

NORTH CAROLINA PLANE COORDINATE SYSTEM
LAMBERT CONFORMAL CONIC PROJECTION
SHEET 1 OF 5

TERMS OF USE: The Mapper's tool is provided as a service to the public. It is not intended to be used for legal purposes. The Mapper's tool is not a substitute for a professional surveyor or engineer. The Mapper's tool is not a substitute for a professional geographer or cartographer. The Mapper's tool is not a substitute for a professional mapmaker. The Mapper's tool is not a substitute for a professional map user. The Mapper's tool is not a substitute for a professional map reader. The Mapper's tool is not a substitute for a professional map seller. The Mapper's tool is not a substitute for a professional map buyer. The Mapper's tool is not a substitute for a professional map distributor. The Mapper's tool is not a substitute for a professional map collector. The Mapper's tool is not a substitute for a professional map enthusiast. The Mapper's tool is not a substitute for a professional map addict. The Mapper's tool is not a substitute for a professional map addict.

COPIES OF THIS MAP ARE AVAILABLE TO THE PUBLIC AT NO CHARGE. CONTACT US TO ORDER: 1-800-368-6848. WWW.MAPPER.COM



- LEGEND**
- INTERSTATE US
 - INTERSTATE NC
 - Divided Hwy
 - Undivided Hwy
 - BLUE RIDGE PARKWAY
 - UNPAVED SURFACED ROAD
 - HARD SURFACED ROAD
 - NON-SYSTEM ROAD
 - PROVISIONALLY DRAWN ROAD
 - PROJECTED LOCATION
 - INTERSECTION DISTANCE
 - INTERSTATE HIGHWAY
 - U.S. NUMBERED HIGHWAY
 - U.S. NUMBERED BI-CYCLE ROUTE
 - N.C. NUMBERED BI-CYCLE ROUTE
 - INTERSTATE INTERCHANGE NUMBER
 - SECONDARY ROAD NUMBER
 - UTILITY LINES
 - RAILROAD LINE
 - RAILROAD STATION
 - POST OFFICE
 - STATE LINE
 - COUNTY LINE
 - CITY LIMITS
 - FERRY ROUTE
 - NARROW CREEK OR STREAM
 - WIDE RIVER OR CREEK
 - RESERVOIR, POND OR LAKE W/ ISLAND
 - DAM OR DAM WITH LOCK
 - WATERFALL
 - SWAMP
 - COMMUNITY, TOWN OR CITY CENTER
 - COUNTY SEAT
 - SCHOOL
 - COLLEGE OR UNIVERSITY
 - HOSPITAL
 - CRIMINAL JAIL
 - CHURCH
 - CHURCH WITH CEMETERY
 - CEMETERY
 - PATROL STATION
 - CORRECTION OR PENAL INSTITUTION
 - QUARRY
 - MINE OR PIT
 - HIGHWAY GARAGE OR MAINT YARD
 - HIGHWAY DIV. OR DIST OFFICE
 - MILITARY POST
 - WEIGH STATION
 - FABRICATIONS
 - HISTORICAL SITE
 - POINTS OF INTEREST
 - STATE FOREST
 - LIGHTHOUSE
 - MOUNTAIN SUMMIT
 - OVERLOOK
 - REST AREA
 - VISITOR CENTER REST AREA
 - WELCOME CENTER REST AREA
 - AIRPORT
 - MILITARY AIRPORT
 - HELIPORT
 - NATIONAL STATE FOREST BOUNDARY
 - WILDLIFE REFUGE
 - NATIONAL STATE PARK BOUNDARY
 - GAME LANDS BOUNDARY
 - MILITARY RESERVATION BOUNDARY
 - INDIAN RESERVATION BOUNDARY

**TRANSYLVANIA COUNTY
NORTH CAROLINA
BRIDGE LOCATION MAP**

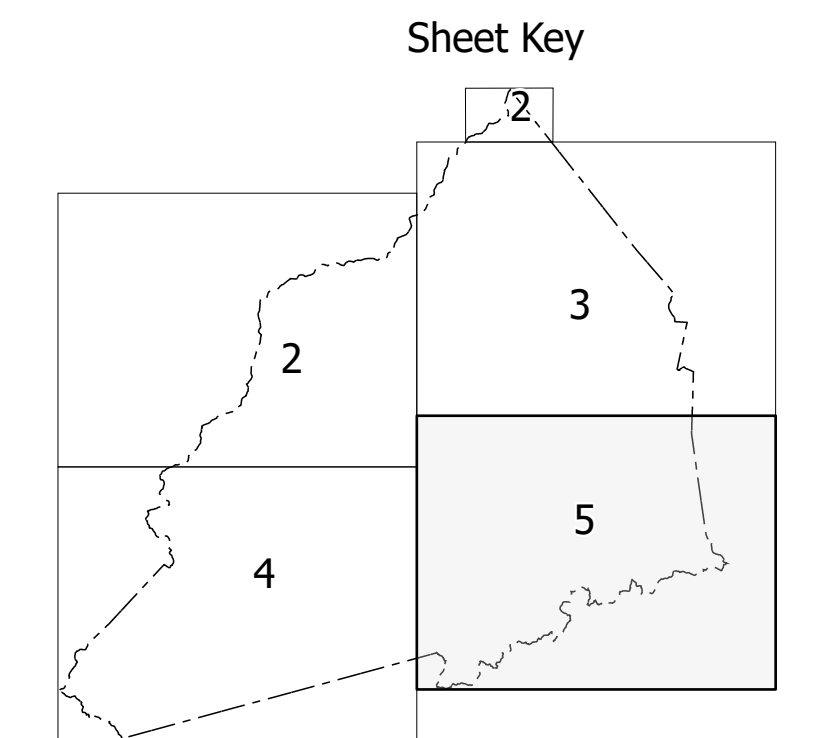
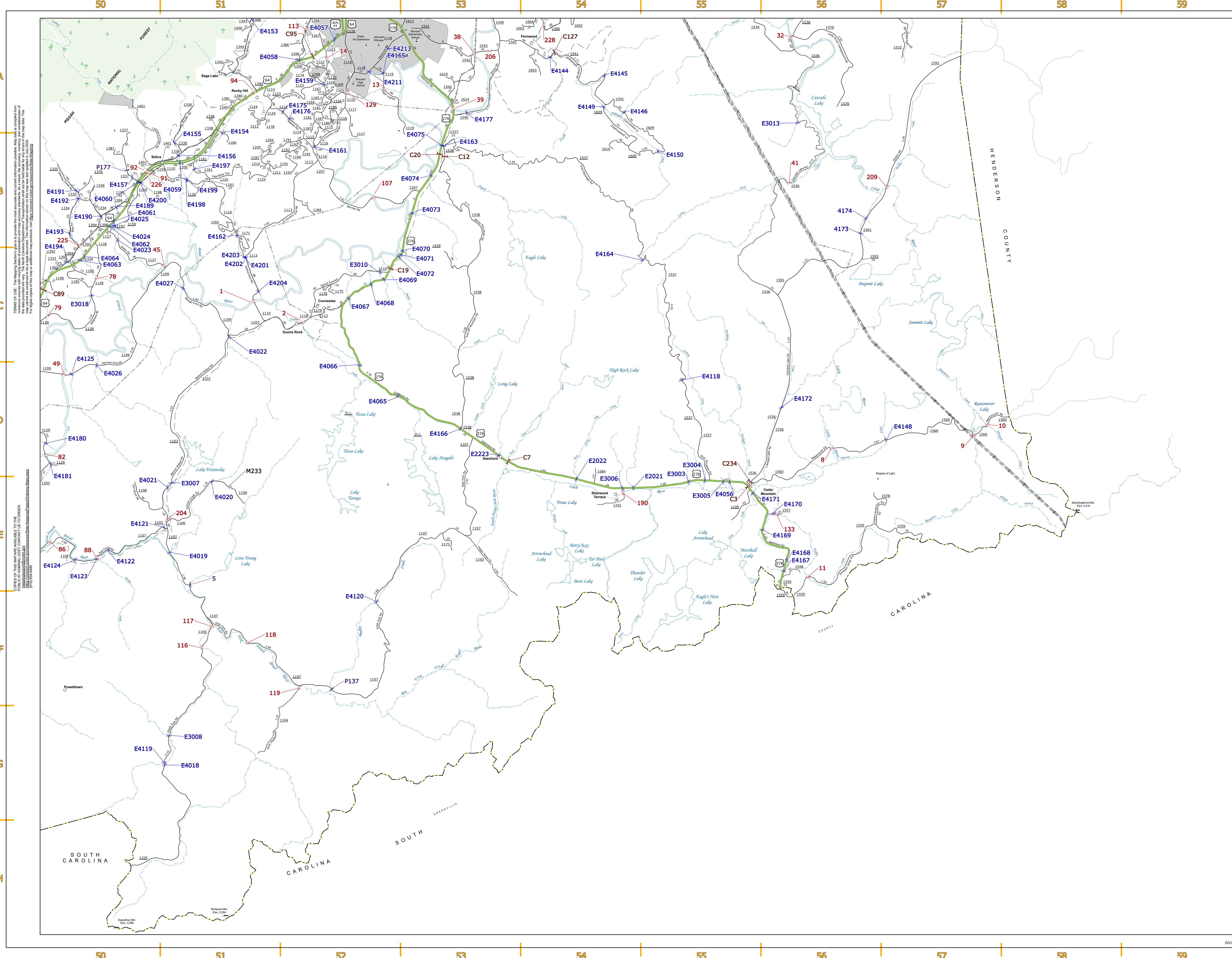
PREPARED BY THE
NORTH CAROLINA DEPARTMENT OF TRANSPORTATION
OPERATIONS PROGRAM MANAGEMENT UNIT - MAPPING SECTION
IN COOPERATION WITH THE
U.S. DEPARTMENT OF TRANSPORTATION
FEDERAL HIGHWAY ADMINISTRATION

SCALE
0 1 2 MILES

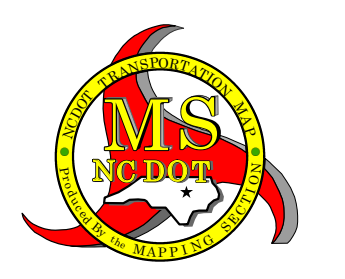
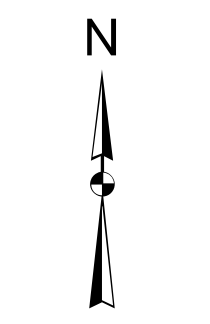
NORTH CAROLINA PLANE COORDINATE SYSTEM
LAMBERT CONFORMAL CONIC PROJECTION

DIVISION 14 DISTRICT 1 TRANSYLVANIA COUNTY NORTH CAROLINA FIPS 175

SHEET 4 of 5

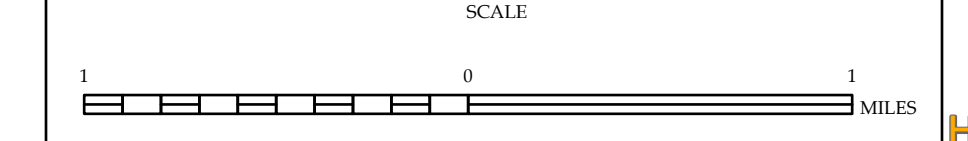


- LEGEND**
- | | | | |
|-----------------------------------|----|---------------|------------------|
| INTERSTATE US | NC | Divided Hwy | BRIDGE |
| US | NC | Undivided Hwy | CITY BRIDGE |
| UNPAVED SURFACED ROAD | | | CITY SIGN |
| HARD SURFACED ROAD | | | CITY CLAYBILT |
| NON-SYSTEM ROAD | | | CITY CLAYBILT |
| PROVISIONALLY DRAWN ROAD | | | NON-FERRY BRIDGE |
| PROTECTED LOCATION | | | NON-FERRY BRIDGE |
| INTERSECTION DISTANCE | | | NON-FERRY BRIDGE |
| INTERSTATE HIGHWAY | | | NON-FERRY BRIDGE |
| U.S. NUMBERED HIGHWAY | | | NON-FERRY BRIDGE |
| N.C. NUMBERED HIGHWAY | | | NON-FERRY BRIDGE |
| U.S. NUMBERED BI-CYCLE ROUTE | | | NON-FERRY BRIDGE |
| N.C. NUMBERED BI-CYCLE ROUTE | | | NON-FERRY BRIDGE |
| INTERSTATE INTERCHANGE NUMBER | | | NON-FERRY BRIDGE |
| SECONDARY ROAD NUMBER | | | NON-FERRY BRIDGE |
| UTILITY LINES | | | NON-FERRY BRIDGE |
| RAILROAD LINE | | | NON-FERRY BRIDGE |
| RAILROAD STATION | | | NON-FERRY BRIDGE |
| INLET LAKE | | | NON-FERRY BRIDGE |
| STATE LANE | | | NON-FERRY BRIDGE |
| COUNTY LINE | | | NON-FERRY BRIDGE |
| CITY LIMITS | | | NON-FERRY BRIDGE |
| NARROW CREEK OR STREAM | | | NON-FERRY BRIDGE |
| WIDE RIVER OR CREEK | | | NON-FERRY BRIDGE |
| RESERVOIR, POND OR LAKE W/ ISLAND | | | NON-FERRY BRIDGE |
| DAM OR DAM WITH LOCK | | | NON-FERRY BRIDGE |
| WATERFALL | | | NON-FERRY BRIDGE |
| SWAMP | | | NON-FERRY BRIDGE |
| COMMUNITY, TOWN OR CITY CENTER | | | NON-FERRY BRIDGE |
| COUNTY SEAT | | | NON-FERRY BRIDGE |
| SCHOOL | | | NON-FERRY BRIDGE |
| COLLEGE OR UNIVERSITY | | | NON-FERRY BRIDGE |
| HOSPITAL | | | NON-FERRY BRIDGE |
| CRIMINAL JAIL | | | NON-FERRY BRIDGE |
| CHURCH | | | NON-FERRY BRIDGE |
| CHURCH WITH CEMETERY | | | NON-FERRY BRIDGE |
| CEMETERY | | | NON-FERRY BRIDGE |
| PATROL STATION | | | NON-FERRY BRIDGE |
| CORRECTION OR PENAL INSTITUTION | | | NON-FERRY BRIDGE |
| QUARRY | | | NON-FERRY BRIDGE |
| MINE OR PIT | | | NON-FERRY BRIDGE |
| HIGHWAY GARAGE OR MAINT. YARD | | | NON-FERRY BRIDGE |
| HIGHWAY DIV. OR DIST. OFFICE | | | NON-FERRY BRIDGE |
| MILITARY POST | | | NON-FERRY BRIDGE |
| WEIGH STATION | | | NON-FERRY BRIDGE |
| FABRICATIONS | | | NON-FERRY BRIDGE |
| HISTORICAL SITE | | | NON-FERRY BRIDGE |
| POINTS OF INTEREST | | | NON-FERRY BRIDGE |
| STATE FOREST | | | NON-FERRY BRIDGE |
| LIGHTHOUSE | | | NON-FERRY BRIDGE |
| MOUNTAIN SUMMIT | | | NON-FERRY BRIDGE |
| OVERLOOK | | | NON-FERRY BRIDGE |
| REST AREA | | | NON-FERRY BRIDGE |
| VISITOR CENTER AREA | | | NON-FERRY BRIDGE |
| WELCOME CENTER AREA | | | NON-FERRY BRIDGE |
| AIRPORT | | | NON-FERRY BRIDGE |
| MILITARY AIRPORT | | | NON-FERRY BRIDGE |
| HELIPORT | | | NON-FERRY BRIDGE |
| NATIONAL STATE FOREST BOUNDARY | | | NON-FERRY BRIDGE |
| WILDLIFE REFUGE | | | NON-FERRY BRIDGE |
| NATIONAL STATE PARK BOUNDARY | | | NON-FERRY BRIDGE |
| GAME LANDS BOUNDARY | | | NON-FERRY BRIDGE |
| MILITARY RESERVATION BOUNDARY | | | NON-FERRY BRIDGE |
| INDIAN RESERVATION BOUNDARY | | | NON-FERRY BRIDGE |



TRANSYLVANIA COUNTY NORTH CAROLINA BRIDGE LOCATION MAP

PREPARED BY THE
NORTH CAROLINA DEPARTMENT OF TRANSPORTATION
OPERATIONS PROGRAM MANAGEMENT UNIT - MAPPING SECTION
IN COOPERATION WITH THE
U.S. DEPARTMENT OF TRANSPORTATION
FEDERAL HIGHWAY ADMINISTRATION



NORTH CAROLINA PLANE COORDINATE SYSTEM
LAMBERT CONFORMAL CONIC PROJECTION