

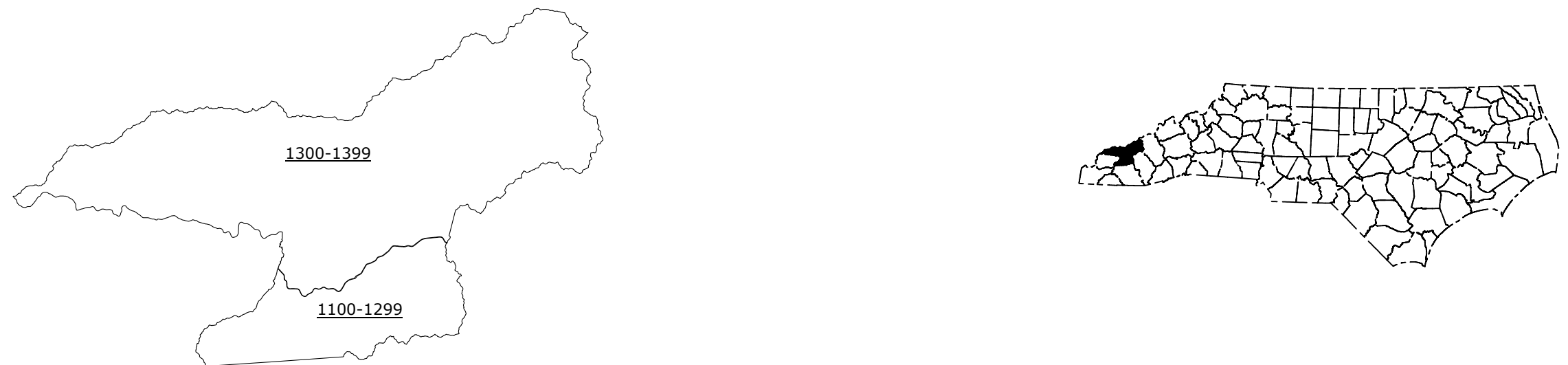
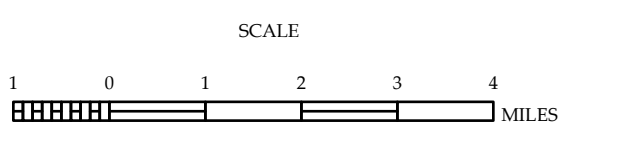
LEGEND

INTERSTATE	US	NC	Divided Hwy
			Undivided Hwy
			WHEELER PARKWAY
			UNPAVED SURFACE ROAD
			HARD SURFACE ROAD
			NON-SYSTEM ROAD
			PROFESSIONALLY DRAWN ROAD
			PROPOSED ROAD
			INTERSECTION DISTANCE
			INTERSTATE HIGHWAY
			U.S. NUMBERED HIGHWAY
			U.S. NUMBERED HIGHWAY
			U.S. NUMBERED BI-CYCLE ROUTE
			U.S. NUMBERED BI-CYCLE ROUTE
			INTERSTATE INTERCHANGE NUMBER
			ROADWAY ROAD NUMBER
			UTILITY LINE
			RAILROAD LINE
			RAILROAD STATION
			INSET AREA
			STATE LINE
			COUNTY LINE
			CITY LIMITS
			FERRY ROUTE
			NARROW CREEK OR STREAM
			WIDE RIVER OR CREEK
			RESERVOIR, POND OR LAKE W/ ISLAND
			DAM OR DAM WITH LOCK
			WATERFALL
			SWAMP
			COMMUNITY TOWN OR CITY CENTER
			COUNTY SEAT
			SCHOOL
			COLLEGE OR UNIVERSITY
			HOSPITAL
			COURT HOUSE STATION
			CHURCH
			CHURCH WITH CEMETERY
			CEMETERY
			PUBLIC STATION
			CORRECTION OR PENAL INSTITUTION
			QUARRY
			MINE OR PIT
			HIGHWAY GARAGE OR MAINT. YARD
			HIGHWAY BUS OR RENT OFFICE
			MILITARY POST
			WATER STATION
			FARM BOUNDS
			HISTORICAL SITE
			POINTS OF INTEREST
			STATE FOREST
			LANDSCAPE
			MOUNTAIN SUMMIT
			OVERLOOK
			REST AREA
			TRUCK STOP REST AREA
			WELCOME CENTER REST AREA
			SHOPS
			MILITARY AIRPORT
			HELIPORT
			NATIONAL STATE FOREST BOUNDARY
			WILDLIFE REFUGE
			NATIONAL STATE PARK BOUNDARY
			GAME LANDS BOUNDARY
			MILITARY RESERVATION BOUNDARY
			INDIAN RESERVATION BOUNDARY



SWAIN COUNTY NORTH CAROLINA BRIDGE LOCATION MAP

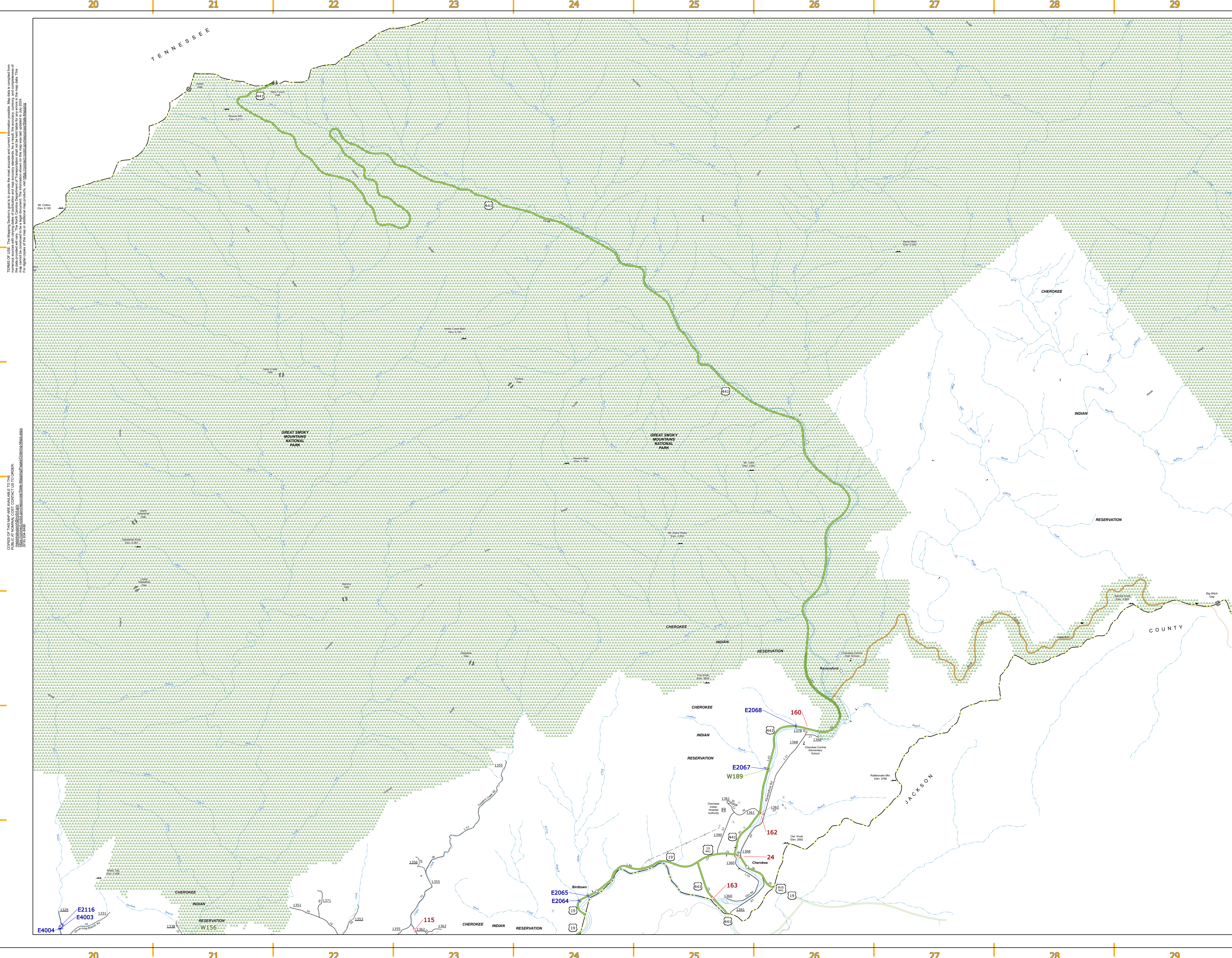
PREPARED BY THE
NORTH CAROLINA DEPARTMENT OF TRANSPORTATION
OPERATIONS PROGRAM MANAGEMENT UNIT - MAPPING SECTION
IN COOPERATION WITH THE
U.S. DEPARTMENT OF TRANSPORTATION
FEDERAL HIGHWAY ADMINISTRATION



COPIES OF THIS MAP ARE AVAILABLE TO THE PUBLIC AT NOMINAL COST. CONTACT US TO ORDER: mapping@dot.state.nc.us

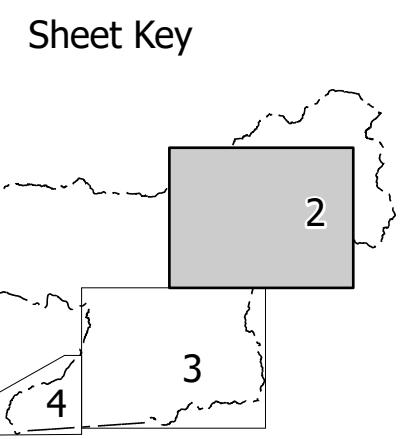
TERMS OF USE: The Mapping Sector's goal is to provide the most accurate and current information possible. Map data is compiled from numerous sources with varying dates of publication and map accuracy standards. As a result, the accuracy, currency, and completeness of the data provided will vary. The North Carolina Department of Transportation shall not be held liable for any errors in the map data. This map cannot be construed to be a legal document. The information shown on this map was last updated in July 2024. For digital copies of this map or additional map products, visit <https://connect.ncdot.gov/resources/State-Mapping>

NORTH CAROLINA PLANE COORDINATE SYSTEM
LAMBERT CONFORMAL CONIC PROJECTION



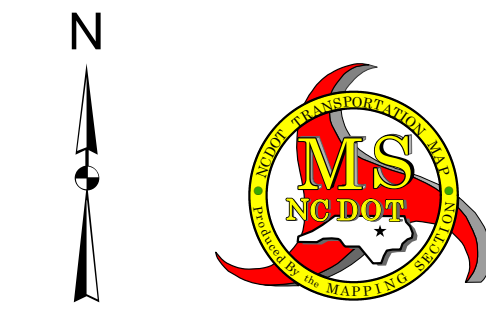
TERMS OF USE: This map is provided as a guide only. It is not intended to be used as a legal document. Map data is compiled from numerous sources with varying degrees of accuracy and may vary over time. This map is not a substitute for a professional survey. The information shown on this map was last updated in July 2024. For additional information, please contact the provider.

COPIES OF THIS MAP ARE AVAILABLE TO THE PUBLIC AT NOMINAL COST. CONTACT US TO ORDER:



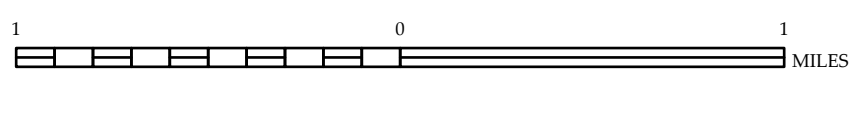
- LEGEND**
- | | | | | |
|--|-------------------------------------|----|----|-------------|
| | INTERSTATE | US | NC | Divided Hwy |
| | | | | Divided Hwy |
| | BLUE RIDGE PARKWAY | | | |
| | UNIMPROVED ROAD | | | |
| | HARD SURFACED ROAD | | | |
| | NON-SYSTEM ROAD | | | |
| | PROPRIETARY ROAD | | | |
| | PROJECTED LOCATION | | | |
| | INTERSECTION DISTANCE | | | |
| | INTERSTATE HIGHWAY | | | |
| | U.S. NUMBERED HIGHWAY | | | |
| | N.C. NUMBERED HIGHWAY | | | |
| | U.S. NUMBERED BICYCLE ROUTE | | | |
| | N.C. NUMBERED BICYCLE ROUTE | | | |
| | INTERSTATE INTERCHANGE NUMBER | | | |
| | SECONDARY ROAD NUMBER | | | |
| | UTILITY LINES | | | |
| | RAILROAD LINE | | | |
| | RAILROAD STATION | | | |
| | INSET AREA | | | |
| | STATE LINE | | | |
| | COUNTY LINE | | | |
| | CITY LIMITS | | | |
| | FERRY ROUTE | | | |
| | NARROW CREEK OR STREAM | | | |
| | WIDE RIVER OR CREEK | | | |
| | RESERVOIR OR POND OR LAKE W/ ISLAND | | | |
| | DAM OR DAM WITH LOCK | | | |
| | WATERFALL | | | |
| | SWAMP | | | |
| | COMMUNITY TOWN OR CITY CENTER | | | |
| | COUNTY SEAT | | | |
| | SCHOOL | | | |
| | COLLEGE OR UNIVERSITY | | | |
| | HOSPITAL | | | |
| | COAST GUARD STATION | | | |
| | CHURCH | | | |
| | CHURCH WITH CEMETERY | | | |
| | CEMETERY | | | |
| | PARK | | | |
| | CORRECTION OR PENAL INSTITUTION | | | |
| | QUARRY | | | |
| | MINE OR PIT | | | |
| | HIGHWAY GARAGE OR MAINT. YARD | | | |
| | HIGHWAY DIV. OR DIST. OFFICE | | | |
| | MILITARY POST | | | |
| | WEIGH STATION | | | |
| | FAIRGROUNDS | | | |
| | HISTORICAL SITE | | | |
| | POINTS OF INTEREST | | | |
| | STATE FOREST | | | |
| | LIGHTHOUSE | | | |
| | MOUNTAIN SUMMIT | | | |
| | OVERLOOK | | | |
| | REST AREA | | | |
| | VISITOR CENTER | | | |
| | WELCOME CENTER | | | |
| | AIRPORT | | | |
| | MILITARY AIRPORT | | | |
| | HELIPAD | | | |
| | NATIONAL/STATE FOREST BOUNDARY | | | |
| | WILDLIFE REFUGE | | | |
| | NATIONAL/STATE PARK BOUNDARY | | | |
| | GAME LANDS BOUNDARY | | | |
| | MILITARY RESERVATION BOUNDARY | | | |
| | INDIAN RESERVATION BOUNDARY | | | |

- | | |
|--|--------------------------|
| | BRIDGE |
| | CITY BRIDGE |
| | CITY SPAN |
| | CITY VIADUCT |
| | CULVERT |
| | ARCH BRIDGE |
| | BEAM BRIDGE |
| | CANTILEVER BRIDGE |
| | GIRDER BRIDGE |
| | MASONRY ARCH BRIDGE |
| | MASONRY GIRDER BRIDGE |
| | MASONRY PIER BRIDGE |
| | MASONRY TRUSS BRIDGE |
| | STEEL ARCH BRIDGE |
| | STEEL GIRDER BRIDGE |
| | STEEL PIER BRIDGE |
| | STEEL TRUSS BRIDGE |
| | CONCRETE ARCH BRIDGE |
| | CONCRETE GIRDER BRIDGE |
| | CONCRETE PIER BRIDGE |
| | CONCRETE TRUSS BRIDGE |
| | TIMBER BRIDGE |
| | TIMBER TRESTLE BRIDGE |
| | TIMBER VIADUCT |
| | TIMBER TRESTLE STRUCTURE |
| | TIMBER VIADUCT STRUCTURE |
| | CITY PIPE |
| | NON-SYSTEM PIPE |
| | CAST IRON PIPE |
| | STEEL PIPE |
| | CONCRETE PIPE |
| | MASONRY STRUCTURE |
| | TIMBER STRUCTURE |
| | STEEL STRUCTURE |
| | CONCRETE STRUCTURE |
| | TUNNEL |
| | COVERED WALKWAY |
| | PEDESTRIAN UNDERPASS |
| | VEHICLE UNDERPASS |
| | PEDESTRIAN WALKWAY |
| | BICYCLE PATH |

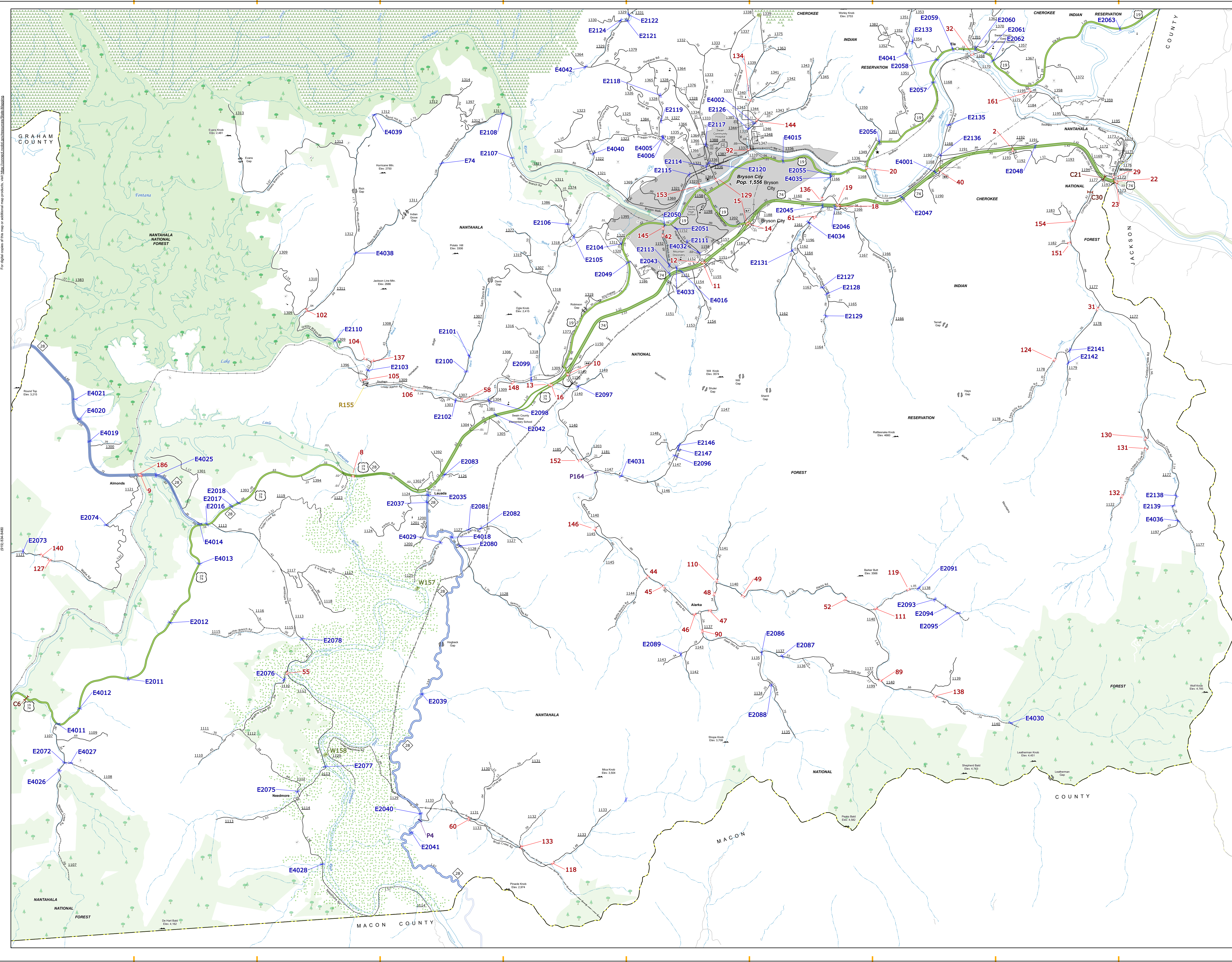


**SWAIN COUNTY
NORTH CAROLINA
BRIDGE LOCATION MAP**

PREPARED BY THE
NORTH CAROLINA DEPARTMENT OF TRANSPORTATION
OPERATIONS PROGRAM MANAGEMENT UNIT - MAPPING SECTION
IN COOPERATION WITH THE
U.S. DEPARTMENT OF TRANSPORTATION
FEDERAL HIGHWAY ADMINISTRATION

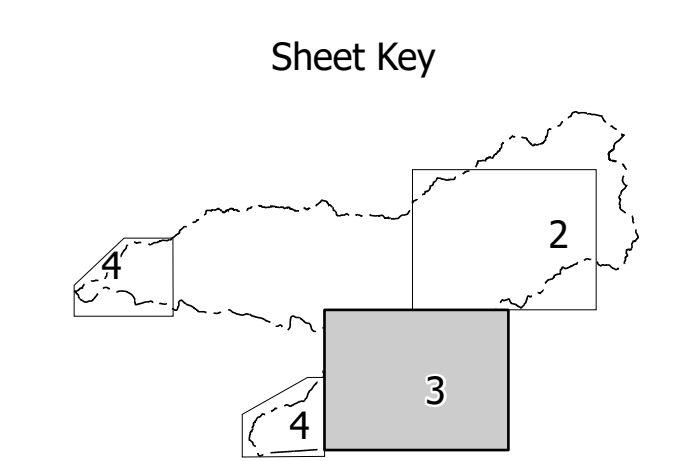


NORTH CAROLINA PLANE COORDINATE SYSTEM
LAMBERT CONFORMAL CONIC PROJECTION



TERMS OF USE: This map is provided for informational purposes only. It is not intended to be used for navigation. Map data is compiled from various sources with varying degrees of accuracy. As a result, there may be some errors in the map. The user assumes all responsibility for any errors or omissions. This map is provided as a service and is not a contract. The information shown on this map was last updated in July 2024. For more information, please visit: https://www.ncdot.gov/transportation/infrastructure/transportation-planning/transportation-planning.aspx

COPIES OF THIS MAP ARE AVAILABLE TO THE PUBLIC AT NO CHARGE. CONTACT US TO ORDER: 919.875.8000 OR VISIT US ONLINE: https://www.ncdot.gov/transportation/infrastructure/transportation-planning/transportation-planning.aspx



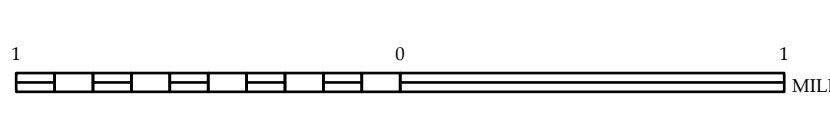
LEGEND

	US	NC	Divided Hwy
	US	NC	Undivided Hwy
			Blue Ridge Parkway
			Unimproved Road
			Hard Surfaced Road
			Non-System Road
			Provisionally Open Road
			Projected Location
			Intersection Distance
			Interstate Highway
			U.S. Numbered Highway
			U.S. Numbered Bicycle Route
			Interstate Interchange
			Secondary Road Number
			Utility Lines
			Railroad Line
			Inset Area
			State Line
			County Line
			City Limits
			Ferry Route
			Narrow Creek or Stream
			Wide River or Creek
			Reservoir, Pond, or Lake w/ Island
			Dam or Dam with Lock
			Waterfall
			Swamp
			Community Town or City Center
			County Seat
			School
			College or University
			Hospital
			Coast Guard Station
			Church
			Church with Cemetery
			Cemetery
			Police Station
			Correction or Penal Institution
			Quarry
			Mine or Pit
			Highway Garage or Maint. Yard
			Highway Div. or Dist. Office
			Military Post
			Weigh Station
			Fairgrounds
			Historical Site
			Points of Interest
			State Forest
			Lighthouse
			Mountain Summit
			Overlook
			Rest Area
			Visitor Ctr Rest Area
			Welcome Ctr Rest Area
			Airport
			Military Airport
			Helipad
			National/State Forest Boundary
			Wildlife Refuge
			National/State Park Boundary
			Game Lands Boundary
			Military Reservation Boundary
			Indian Reservation Boundary

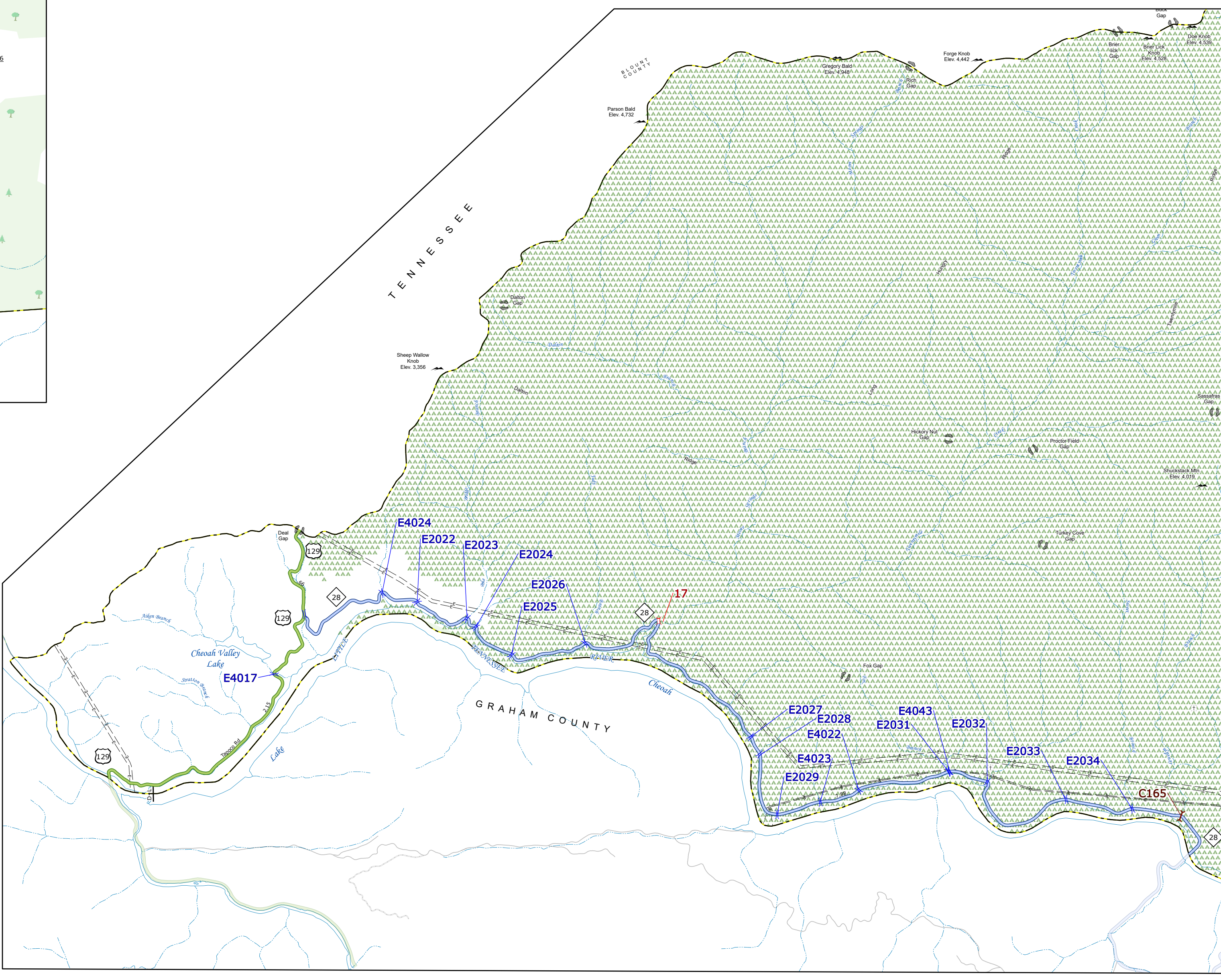
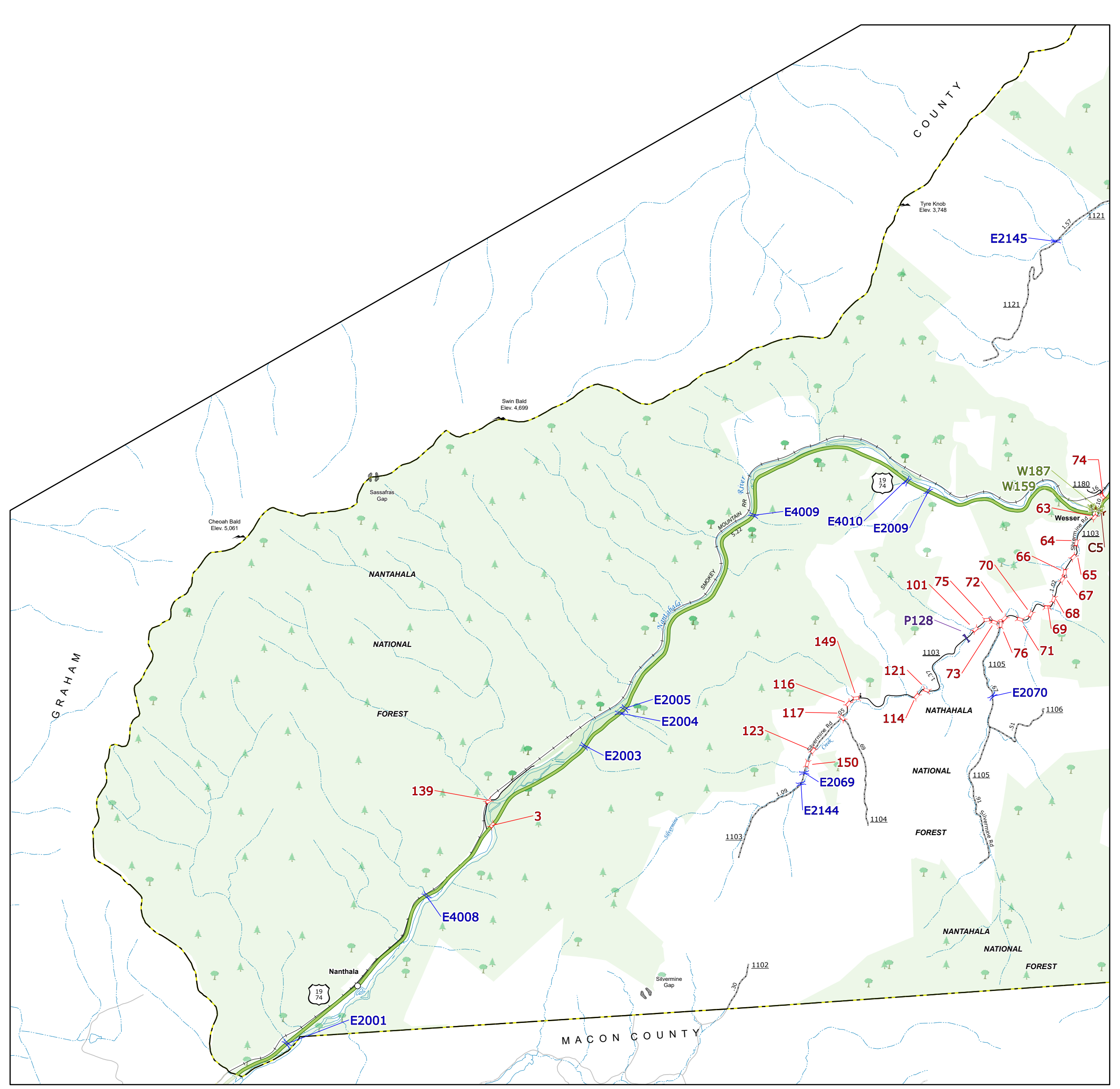


SWAIN COUNTY NORTH CAROLINA BRIDGE LOCATION MAP

PREPARED BY THE
NORTH CAROLINA DEPARTMENT OF TRANSPORTATION
OPERATIONS PROGRAM MANAGEMENT UNIT - MAPPING SECTION
IN COOPERATION WITH THE
U.S. DEPARTMENT OF TRANSPORTATION
FEDERAL HIGHWAY ADMINISTRATION



NORTH CAROLINA PLANE COORDINATE SYSTEM
LAMBERT CONFORMAL CONIC PROJECTION



Sheet Key

LEGEND

INTERSTATE (US, NC)	UNPAVED HIGHWAY	BRIDGE
BLUE RIDGE PARKWAY	UNPAVED SURFACE ROAD	CITY BRIDGE
UNPAVED SURFACE ROAD	ROAD SURFACED ROAD	CITY BRIDGE
ROAD SURFACED ROAD	NON-SYSTEM ROAD	CITY CULVERT
NON-SYSTEM ROAD	PROPOSED LOCATION	CITY CULVERT
PROPOSED LOCATION	INTERSECTION DISTANCE	NON-SYSTEM BRIDGE
INTERSECTION DISTANCE	INTERSTATE HIGHWAY	NON-SYSTEM BRIDGE
INTERSTATE HIGHWAY	U.S. NUMBERED HIGHWAY	FEDERAL BRIDGE
U.S. NUMBERED HIGHWAY	U.S. NUMBERED BI-CYCLE ROUTE	NON-SYSTEM MAINT BY NCDOT
U.S. NUMBERED BI-CYCLE ROUTE	U.S. NUMBERED BI-CYCLE ROUTE	CANTILEVER BRIDGE
U.S. NUMBERED BI-CYCLE ROUTE	INTERSTATE INTERCHANGE NUMBER	PIERCE STRUCTURE
INTERSTATE INTERCHANGE NUMBER	SECONDARY ROAD NUMBER	NON-SYSTEM OVERPASS STRUCTURE
SECONDARY ROAD NUMBER	UTILITY LINES	CITY PIPE
UTILITY LINES	RAILROAD LINE	RAILROAD BRIDGE
RAILROAD LINE	RAILROAD STATION	OVERHEAD SIGN
RAILROAD STATION	POST AREA	TUNNEL
POST AREA	STATE LINE	PEDESTRIAN UNDERPASS
STATE LINE	CITY LINE	VEHICULAR UNDERPASS
CITY LINE	FERRY BOATH	PEDESTRIAN WALKWAY
FERRY BOATH	NARROW CREEK OR STREAM	TRIPLE SIGN
NARROW CREEK OR STREAM	WIDE RIVER OR CREEK	
WIDE RIVER OR CREEK	RESERVOIR, POND OR LAKE W/ ISLAND	
RESERVOIR, POND OR LAKE W/ ISLAND	DAM OR DAM WITH LOCK	
DAM OR DAM WITH LOCK	WATERFALL	
WATERFALL	SWAMP	
SWAMP	COMMUNITY TOWN OR CITY CENTER	
COMMUNITY TOWN OR CITY CENTER	COUNTY SEAT	
COUNTY SEAT	SCHOOL	
SCHOOL	COLLEGE OR UNIVERSITY	
COLLEGE OR UNIVERSITY	HOSPITAL	
HOSPITAL	COAST GUARD STATION	
COAST GUARD STATION	CHURCH	
CHURCH	CHURCH WITH CEMETERY	
CHURCH WITH CEMETERY	CEMETERY	
CEMETERY	PARK STATION	
PARK STATION	CORRECTION OR PENAL INSTITUTION	
CORRECTION OR PENAL INSTITUTION	QUARRY	
QUARRY	MINE OR PIT	
MINE OR PIT	HUNTING CABAGE OR MAIN YARD	
HUNTING CABAGE OR MAIN YARD	HIGHWAY DIV. OR DIST. OFFICE	
HIGHWAY DIV. OR DIST. OFFICE	MILITARY POST	
MILITARY POST	WEIGH STATION	
WEIGH STATION	FABRICATION	
FABRICATION	HISTORICAL SITE	
HISTORICAL SITE	POINTS OF INTEREST	
POINTS OF INTEREST	STATE FOREST	
STATE FOREST	LIGHTHOUSE	
LIGHTHOUSE	MOUNTAIN SUMMIT	
MOUNTAIN SUMMIT	OVERLOOK	
OVERLOOK	REST AREA	
REST AREA	VISITOR REST AREA	
VISITOR REST AREA	WELCOME CENTER AREA	
WELCOME CENTER AREA	AIRPORT	
AIRPORT	MILITARY AIRPORT	
MILITARY AIRPORT	HELIPORT	
HELIPORT	NATIONAL STATE FOREST BOUNDARY	
NATIONAL STATE FOREST BOUNDARY	WILDLIFE REFUGE	
WILDLIFE REFUGE	NATIONAL STATE PARK BOUNDARY	
NATIONAL STATE PARK BOUNDARY	GAME LANDS BOUNDARY	
GAME LANDS BOUNDARY	MILITARY RESERVATION BOUNDARY	
MILITARY RESERVATION BOUNDARY	INDIAN RESERVATION BOUNDARY	

SWAIN COUNTY NORTH CAROLINA BRIDGE LOCATION MAP

PREPARED BY THE
NORTH CAROLINA DEPARTMENT OF TRANSPORTATION
OPERATIONS PROGRAM MANAGEMENT UNIT - MAPPING SECTION
IN COOPERATION WITH THE
U.S. DEPARTMENT OF TRANSPORTATION
FEDERAL HIGHWAY ADMINISTRATION

SCALE

0 0.5
MILES

NORTH CAROLINA PLANE COORDINATE SYSTEM
LAMBERT CONFORMAL CONIC PROJECTION

TERMS OF USE: The Mapping Section's goal is to provide the most accurate and current information possible. Map data is compiled from various sources including aerial photography, ground surveys, and other data. The data is subject to change without notice. The information on this map was last updated in July 2024.

COPIES OF THIS MAP ARE AVAILABLE TO THE PUBLIC AT NORMAL COST. CONTACT US TO ORDER: