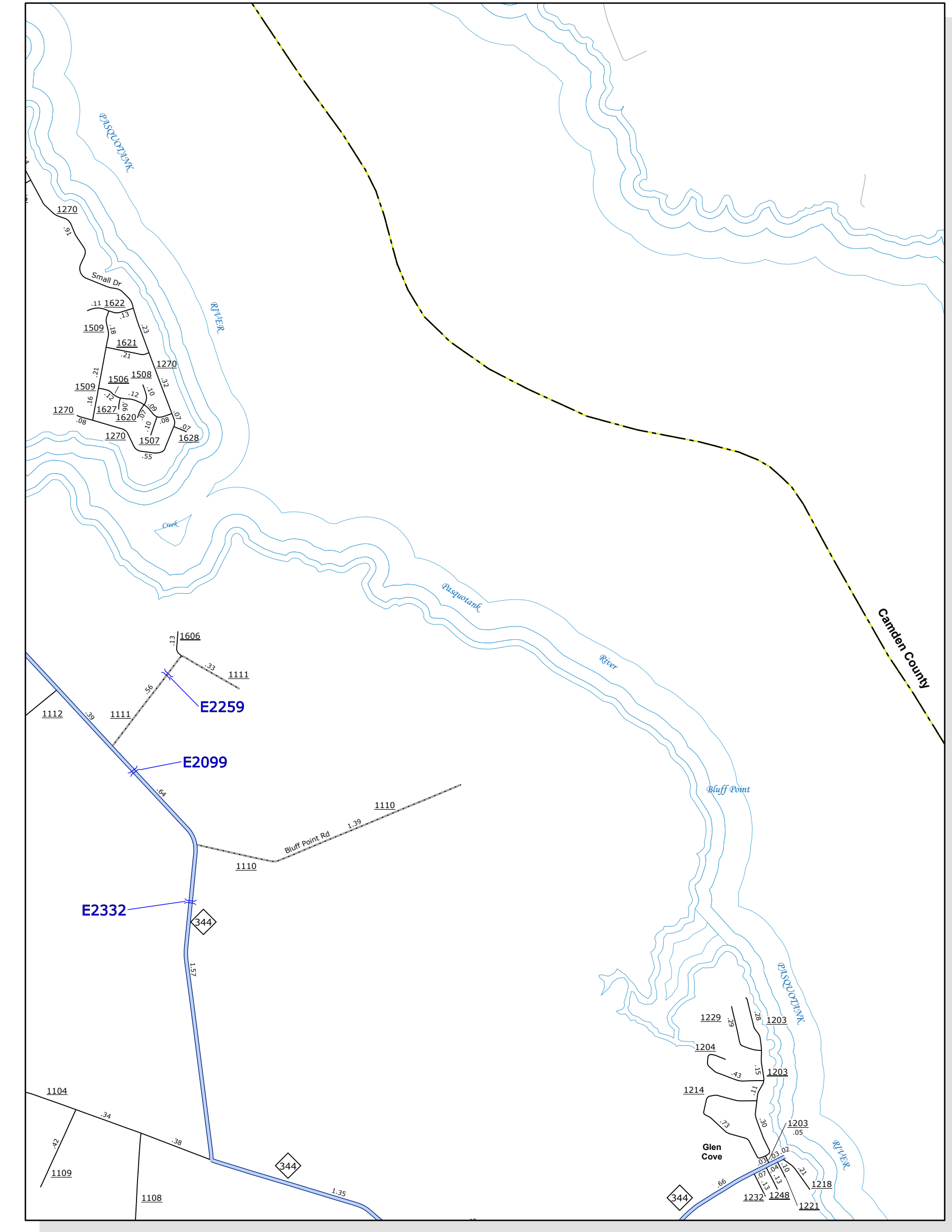
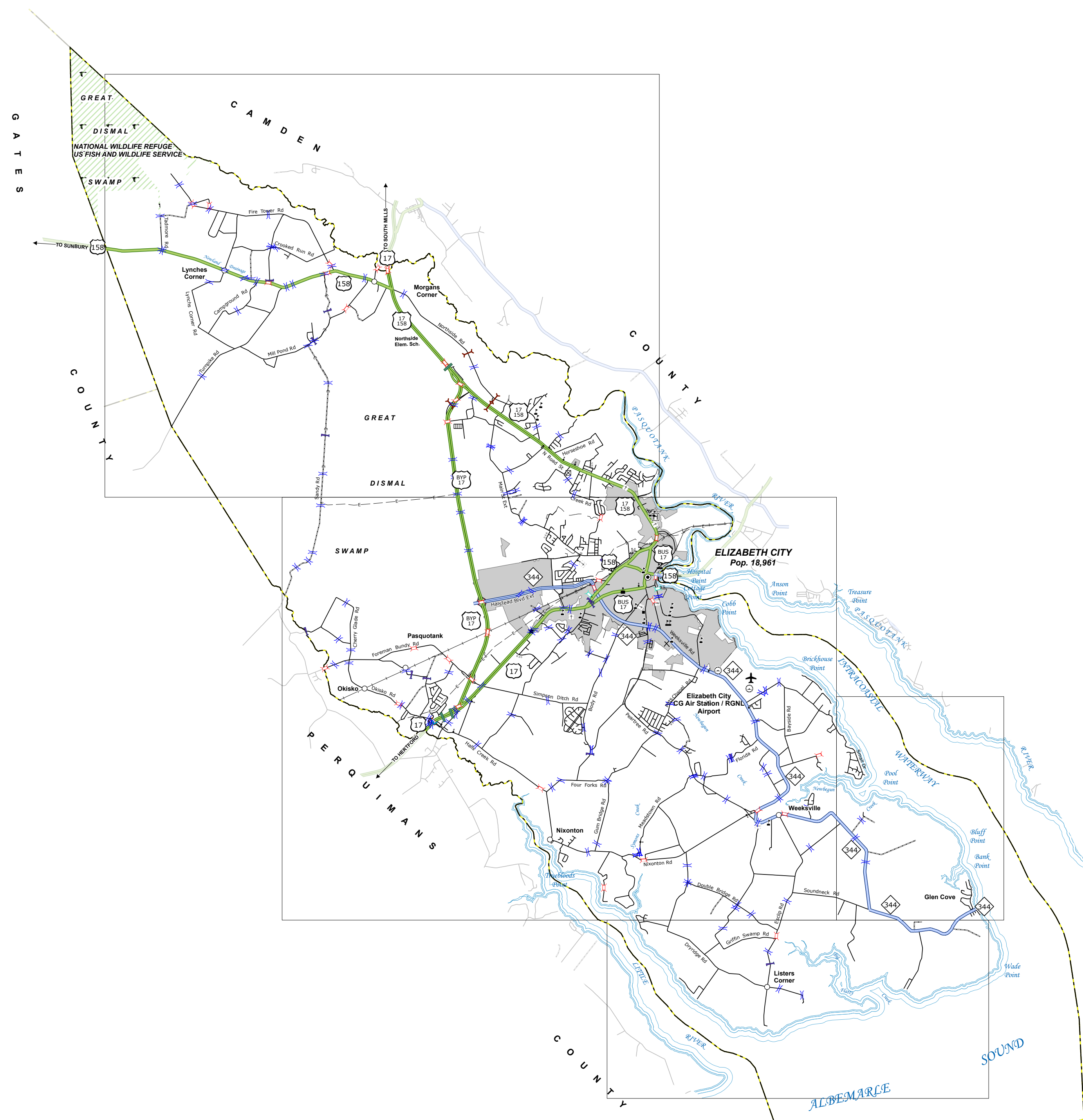
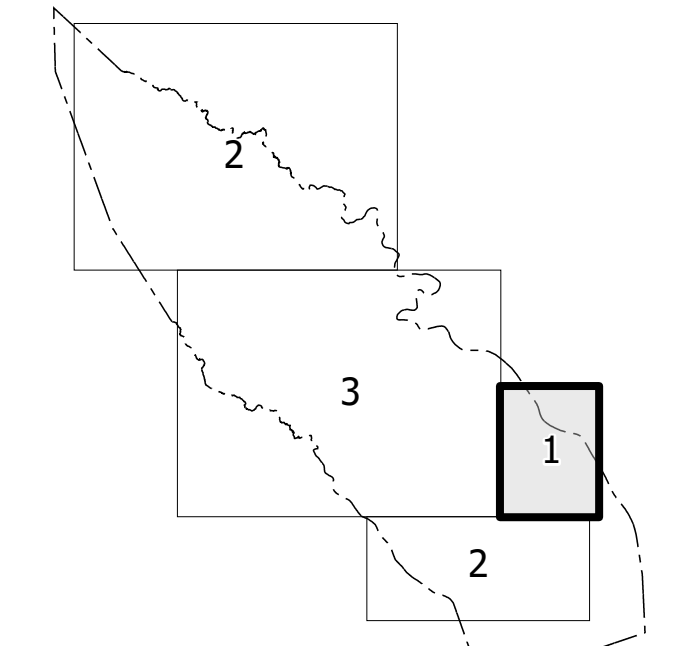
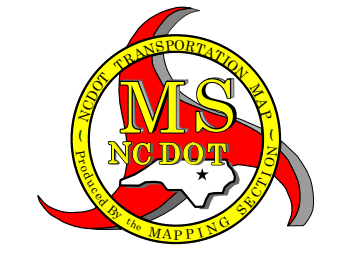
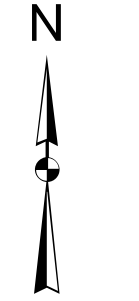


Sheet Key



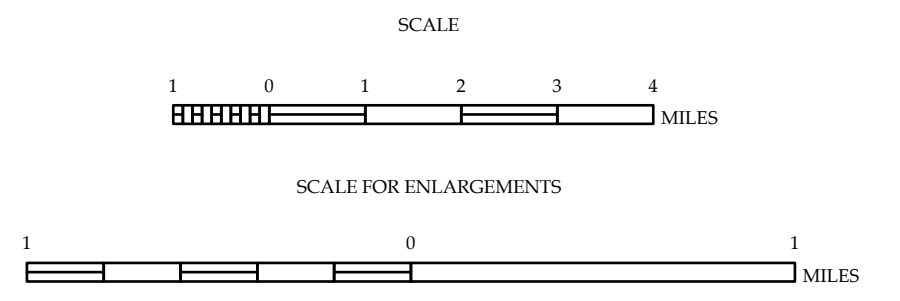
- LEGEND**
- INTERSTATE US NC
 - Divided Hwy
 - Undivided Hwy
 - BULL RIDGE PARKWAY
 - UNPAVED SHEAVED ROAD
 - ROAD W/ SHEAVED ROAD
 - NON-SYSTEM ROAD
 - INDIVIDUALLY OWNED ROAD
 - PROTECTED W/ GARDEN
 - INTERSECTION DISTANCE
 - INTERSTATE HIGHWAY
 - U.S. NUMBERED HIGHWAY
 - N.C. NUMBERED HIGHWAY
 - U.S. NUMBERED BI-CYCLE ROUTE
 - N.C. NUMBERED BI-CYCLE ROUTE
 - INTERSTATE INTERCHANGE NUMBER
 - SECONDARY ROAD NUMBER
 - UTILITY LINES
 - RAILROAD LINE
 - RAILROAD STATION
 - INLET AREA
 - STATE LINE
 - COUNTY LINE
 - UNPAVED ROAD BOUNDARIES
 - CITY LIMITS
 - FERRY WHARF AND DAM
 - BARREN CREEK OR STREAM
 - WIDE RIVER OR CREEK
 - RECREATION POND OR LAKE/ ISLAND
 - DAM OR DAM WITH LOCK
 - WATERFALL
 - SWAMP
 - COMMUNITY
 - COUNTY SEAT
 - SCHOOL
 - COLLEGE OR UNIVERSITY
 - HOSPITAL
 - COAST GUARD STATION
 - CHURCH
 - CHURCH WITH CEMETERY
 - CEMETERY
 - FIRE/STATION
 - CORRECTION OR PENAL INSTITUTION
 - QUARRY
 - MINE OR PIT
 - HIGHWAY GARAGE OR MAINT. YARD
 - HIGHWAY DEP. OR DIST. OFFICE
 - WATER TOWER
 - WEIGH STATION
 - FABRICATION
 - HISTORICAL SITE
 - POINTS OF INTEREST
 - CITY SQUARE
 - STATE FOREST
 - LIGHTHOUSE
 - MOUNTAIN SUMMIT
 - MOUNTAIN GAP
 - OVERLOOK
 - REST AREA
 - VEGETATION REST AREA
 - WELCOME CENTER AREA
 - AIRPORT
 - MILITARY AIRPORT
 - NATIONAL STATE FOREST BOUNDARY
 - WILDLIFE REFUGE
 - NATIONAL STATE PARK BOUNDARY
 - GAME LANDS BOUNDARY
 - MILITARY RESERVATION BOUNDARY
 - INDIAN RESERVATION BOUNDARY

- BRIDGE
- CITY BRIDGE
- CITY SIGN
- N.C. CITY CURVE
- N.C. CURVE
- DRAIN BRIDGE
- FEDERATED BRIDGE
- NON-SYSTEM PIPE
- FERRY RAMP
- FEDERAL BRIDGE
- NON-SYSTEM MAINT BY NCDOT
- CANTILEVER SIGN
- PRECAST STRUCTURE
- NCDOT OVERPASS STRUCTURE
- RESTRICTION OR FILES
- CITY PIPE
- PIPE
- RAILROAD BRIDGE
- OVERHEAD SIGN
- TUNNEL
- FEDERATED UNDERPASS
- VEHICULAR UNDERPASS
- FEDERATED WALKWAY
- POLE SIGN



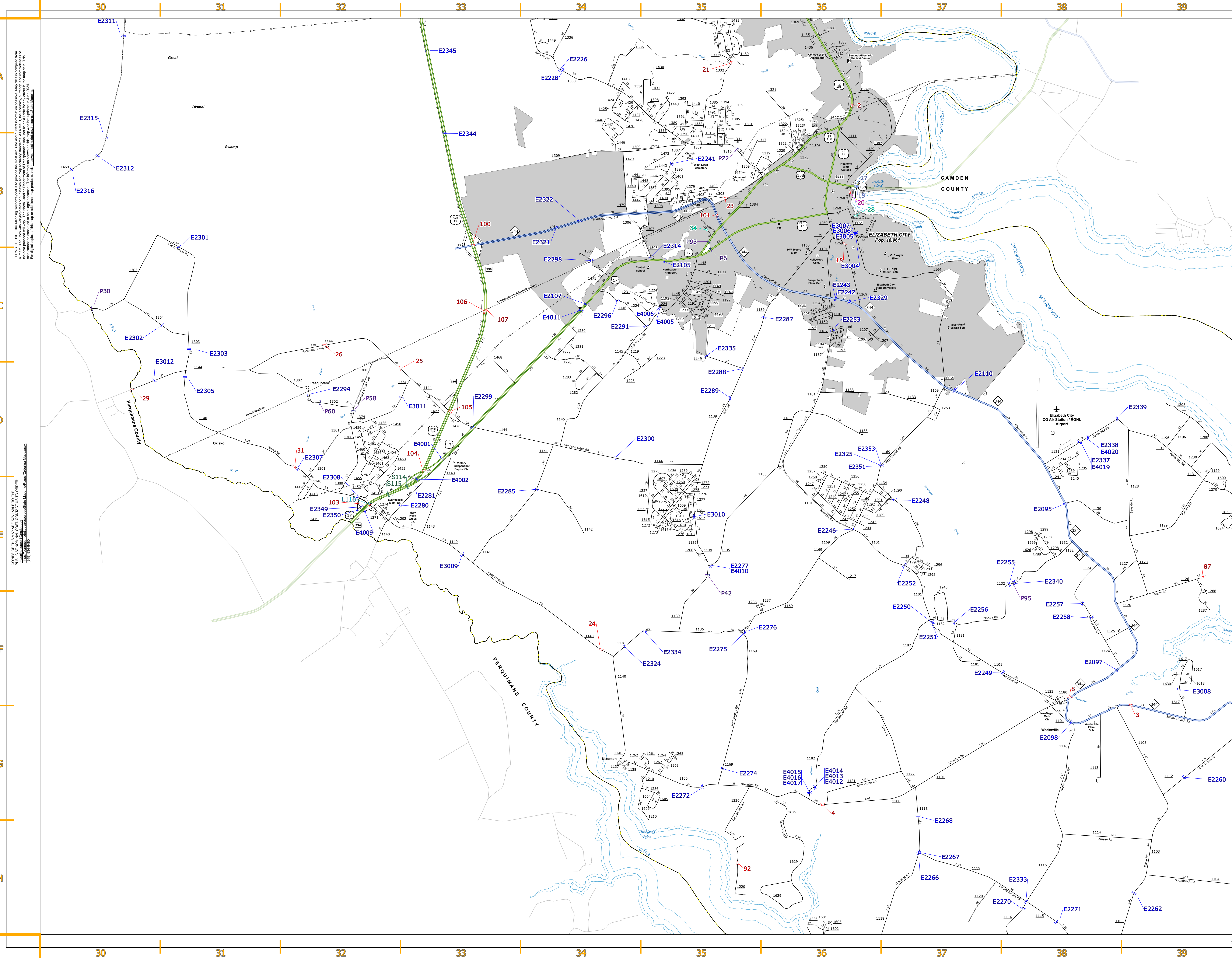
**PASQUOTANK COUNTY
NORTH CAROLINA
BRIDGE LOCATION MAP**

PREPARED BY THE
NORTH CAROLINA DEPARTMENT OF TRANSPORTATION
OPERATIONS PROGRAM MANAGEMENT UNIT - MAPPING SECTION
IN COOPERATION WITH THE
U.S. DEPARTMENT OF TRANSPORTATION
FEDERAL HIGHWAY ADMINISTRATION



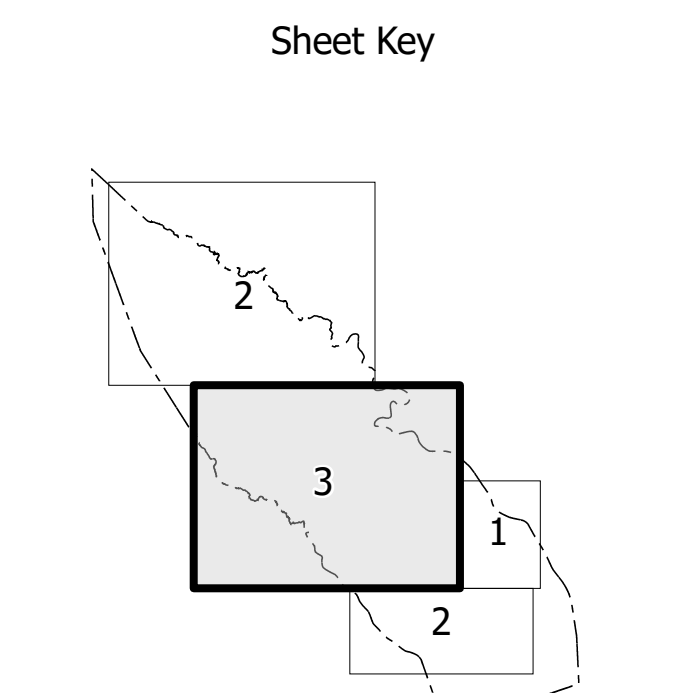
COPIES OF THIS MAP ARE AVAILABLE TO THE PUBLIC AT NOMINAL COST. CONTACT US TO ORDER: pasquotank@dot.nc.gov or <https://connect.ncdot.gov/resources/State-Mapping/Pages/Ordering-Maps.aspx> (DFW 534-4455)

TERMS OF USE: The Mapping Section's goal is to provide the most accurate and current information possible. Map data is compiled from numerous sources with varying dates of publication and map accuracy standards. As a result, the accuracy, currency, and completeness of the data provided will vary. The North Carolina Department of Transportation shall not be held liable for any errors in the map data. This map cannot be construed to be a legal document. The information shown on this map was last updated in June 2024. For digital copies of this map or additional map products, visit <https://connect.ncdot.gov/resources/State-Mapping>.



TERMS OF USE: The Mapping Section's goal is to provide the most accurate and most information possible. Map data is collected from numerous sources with varying degrees of accuracy. While every effort is made to ensure the accuracy, reliability, and completeness of the information, the user assumes all responsibility for any errors or omissions. The information shown on the map was last updated in June 2024. For digital copies of this map or additional information, visit <https://www.ncdot.gov/transportation/transportation-services/mapping-services>.

COPIES OF THIS MAP ARE AVAILABLE TO THE PUBLIC AT THE PASQUOTANK COUNTY COURTHOUSE, 100 S. DUNDRETT ST., PASQUOTANK, NC 28586.



- ### LEGEND
- INTERSTATE US NC
 - US NUMBERED HIGHWAY
 - N.C. NUMBERED HIGHWAY
 - U.S. NUMBERED HIGHWAY
 - N.C. NUMBERED HIGHWAY
 - INTERSTATE INTERCHANGE NUMBER
 - SECONDARY ROAD NUMBER
 - UTILITY LINES
 - RAILROAD LINE
 - RAILROAD STATION
 - STAR LINE
 - COUNTY LINE
 - SMOOTHED URBAN BOUNDARIES
 - CITY LIMITS
 - FERRY ROUTE AND RAMP
 - NARROW CREEK OR STREAM
 - WIDE RIVER OR CREEK
 - RESERVOIR, POND OR LAKE W/ ISLAND
 - DAM OR DAM WITH LOCK
 - WATERFALL
 - SWAMP
 - COMMUNITY
 - COUNTY SEAT
 - SCHOOL
 - COLLEGE OR UNIVERSITY
 - HOSPITAL
 - CHURCH WITH CEMETERY
 - CHURCH
 - CEMETERY
 - PATROL STATION
 - CORRECTION OR PENAL INSTITUTION
 - QUARRY
 - MINE OR PIT
 - HIGHWAY GARAGE OR MAINT. YARD
 - HIGHWAY DIV. OR FIRST OFFICE
 - MILITARY POST
 - WEIGH STATION
 - FARGO BOND
 - HISTORICAL SITE
 - POINTS OF INTEREST
 - POST OFFICE
 - STATE FOREST
 - IN COOPERATION WITH THE
 - INDIAN RESERVATION
 - MOUNTAIN SUMMIT
 - MOUNTAIN GAP
 - OVERLOOK
 - REST AREA
 - VISITOR CENTER AREA
 - WELCOME CENTER AREA
 - AIRPORT
 - MILITARY AIRPORT
 - NATIONAL STATE FOREST BOUNDARY
 - WILDLIFE REFUGE
 - NATIONAL STATE PARK BOUNDARY
 - GAME LANDS BOUNDARY
 - MILITARY RESERVATION BOUNDARY
 - INDIAN RESERVATION BOUNDARY

PASQUOTANK COUNTY
NORTH CAROLINA
BRIDGE LOCATION MAP
 PREPARED BY THE
 NORTH CAROLINA DEPARTMENT OF TRANSPORTATION
 OPERATIONS PROGRAM MANAGEMENT UNIT - MAPPING SECTION
 IN COOPERATION WITH THE
 U.S. DEPARTMENT OF TRANSPORTATION
 FEDERAL HIGHWAY ADMINISTRATION

SCALE

0 1 2 MILES

NORTH CAROLINA PLANE COORDINATE SYSTEM
LAMBERT CONFORMAL CONIC PROJECTION

SHEET 3 of 3