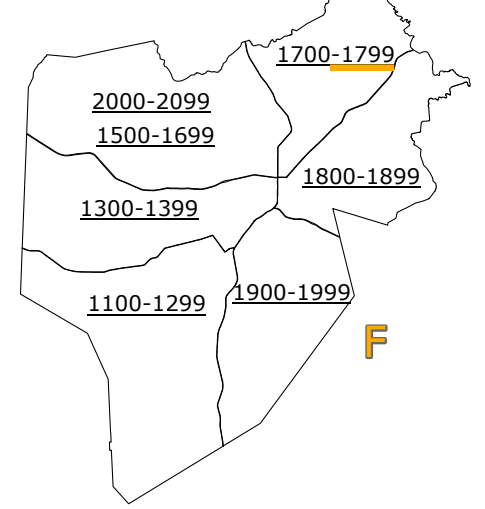
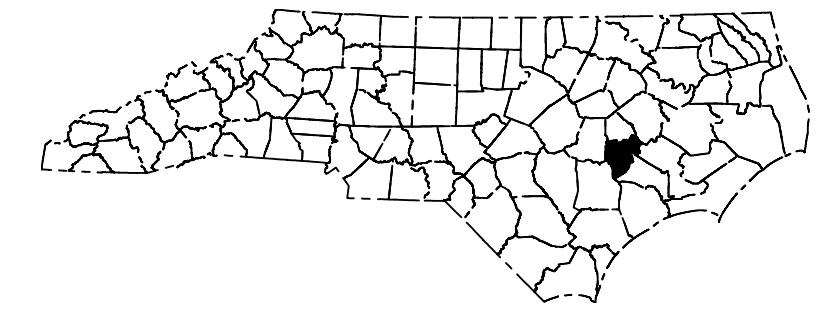
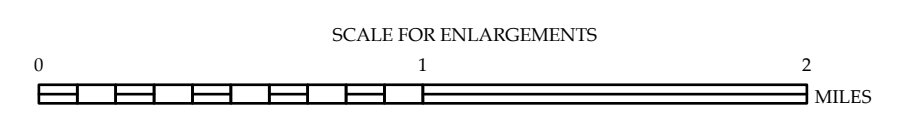
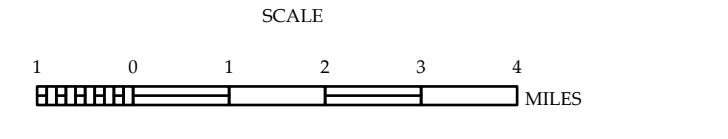


- LEGEND**
- | | | |
|-----------------------------------|---------------|----------------|
| INTERSTATE US NC | Divided Hwy | BRIDGE |
| Blue Ridge Parkway | Undivided Hwy | CITY BRIDGE |
| UNPAVED SURFACED ROAD | | CITY SKIN |
| ROAD-BUILD-TO ROAD | | CITY CULVERT |
| NON-SYSTEM ROAD | | CITY CALVERT |
| PROVISIONALLY DRAWN ROAD | | DRIVE BRIDGE |
| PROJECTED LOCATION | | FEDERAL BRIDGE |
| INTERSECTION DISTANCE | | FEDERAL RAMP |
| INTERFERED HIGHWAY | | FEDERAL BRIDGE |
| U.S. NUMBERED HIGHWAY | | FEDERAL RAMP |
| N.C. NUMBERED HIGHWAY | | FEDERAL BRIDGE |
| N.C. NUMBERED BYWAY ROUTE | | FEDERAL RAMP |
| N.C. NUMBERED BYWAY ROUTE | | FEDERAL BRIDGE |
| INTERSTATE INTERCHANGE NUMBER | | FEDERAL RAMP |
| SECONDARY ROAD NUMBER | | FEDERAL BRIDGE |
| UTILITY LINES | | FEDERAL RAMP |
| RAILROAD LINE | | FEDERAL BRIDGE |
| RAILROAD STATION | | FEDERAL RAMP |
| INSLET AREA | | FEDERAL BRIDGE |
| STATE LINE | | FEDERAL RAMP |
| COUNTY LINE | | FEDERAL BRIDGE |
| SMOOTHED URBAN BOUNDARIES | | FEDERAL RAMP |
| CITY LIMITS | | FEDERAL BRIDGE |
| FERRY ROUTE AND RAMP | | FEDERAL RAMP |
| NARROW RIVER OR STREAM | | FEDERAL BRIDGE |
| WIDE RIVER OR CREEK | | FEDERAL RAMP |
| RESERVOIR, POND OR LAKE W/ ISLAND | | FEDERAL BRIDGE |
| DAM OR DAM WITH LOCK | | FEDERAL RAMP |
| WETLAND | | FEDERAL BRIDGE |
| SWAMP | | FEDERAL RAMP |
| COMMUNITY | | FEDERAL BRIDGE |
| COUNTY SEAT | | FEDERAL RAMP |
| SCHOOL | | FEDERAL BRIDGE |
| COLLEGE OR UNIVERSITY | | FEDERAL RAMP |
| HOSPITAL | | FEDERAL BRIDGE |
| COAST GUARD STATION | | FEDERAL RAMP |
| CHURCH | | FEDERAL BRIDGE |
| CHURCH WITH CEMETERY | | FEDERAL RAMP |
| CEMETERY | | FEDERAL BRIDGE |
| FIRE STATION | | FEDERAL RAMP |
| CORRECTION OR PENAL INSTITUTION | | FEDERAL BRIDGE |
| QUARRY | | FEDERAL RAMP |
| MINE OR PIT | | FEDERAL BRIDGE |
| BREWERY GARAGE OR MAIN YARD | | FEDERAL RAMP |
| BREWERY BIV. OR DIST. OFFICE | | FEDERAL BRIDGE |
| MILITARY POST | | FEDERAL RAMP |
| WEIGH STATION | | FEDERAL BRIDGE |
| FURNACE/SMITH | | FEDERAL RAMP |
| HISTORICAL SITE | | FEDERAL BRIDGE |
| POINTS OF INTEREST | | FEDERAL RAMP |
| POST OFFICE | | FEDERAL BRIDGE |
| STATE FOREST | | FEDERAL RAMP |
| LEGION HOUSE | | FEDERAL BRIDGE |
| MONUMENTAL OVERLOOK | | FEDERAL RAMP |
| REST AREA | | FEDERAL BRIDGE |
| VISITOR REST AREA | | FEDERAL RAMP |
| WELCOME CENTER AREA | | FEDERAL BRIDGE |
| AIRPORT | | FEDERAL RAMP |
| MILITARY AIRPORT | | FEDERAL BRIDGE |
| NATIONAL / STATE FOREST BOUNDARY | | FEDERAL RAMP |
| WILDLIFE REFUGE | | FEDERAL BRIDGE |
| NATIONAL / STATE PARK BOUNDARY | | FEDERAL RAMP |
| GAME LANDS BOUNDARY | | FEDERAL BRIDGE |
| MILITARY RESERVATION BOUNDARY | | FEDERAL RAMP |
| INDIAN RESERVATION BOUNDARY | | FEDERAL BRIDGE |



LENOIR COUNTY NORTH CAROLINA BRIDGE LOCATION MAP

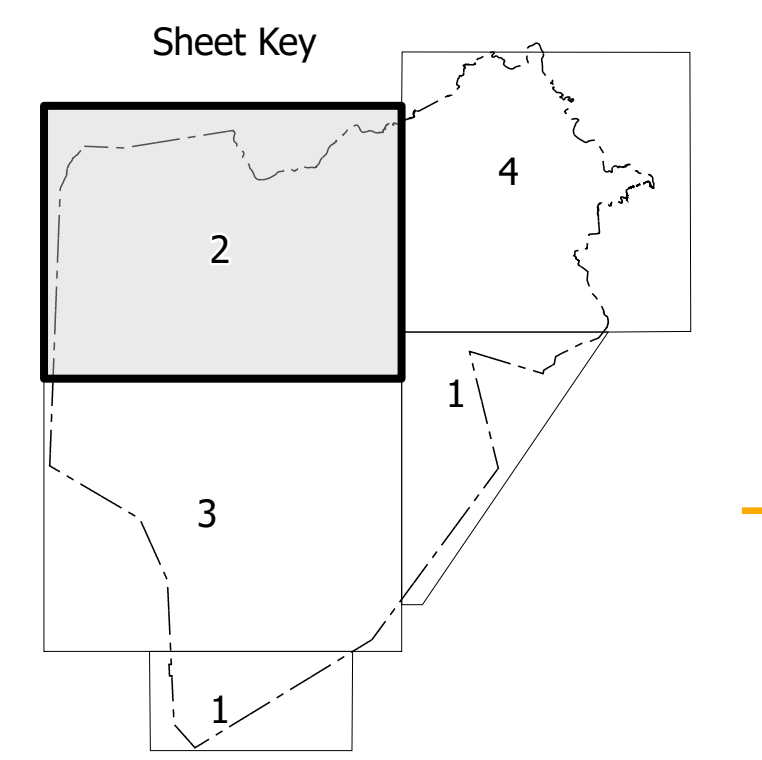
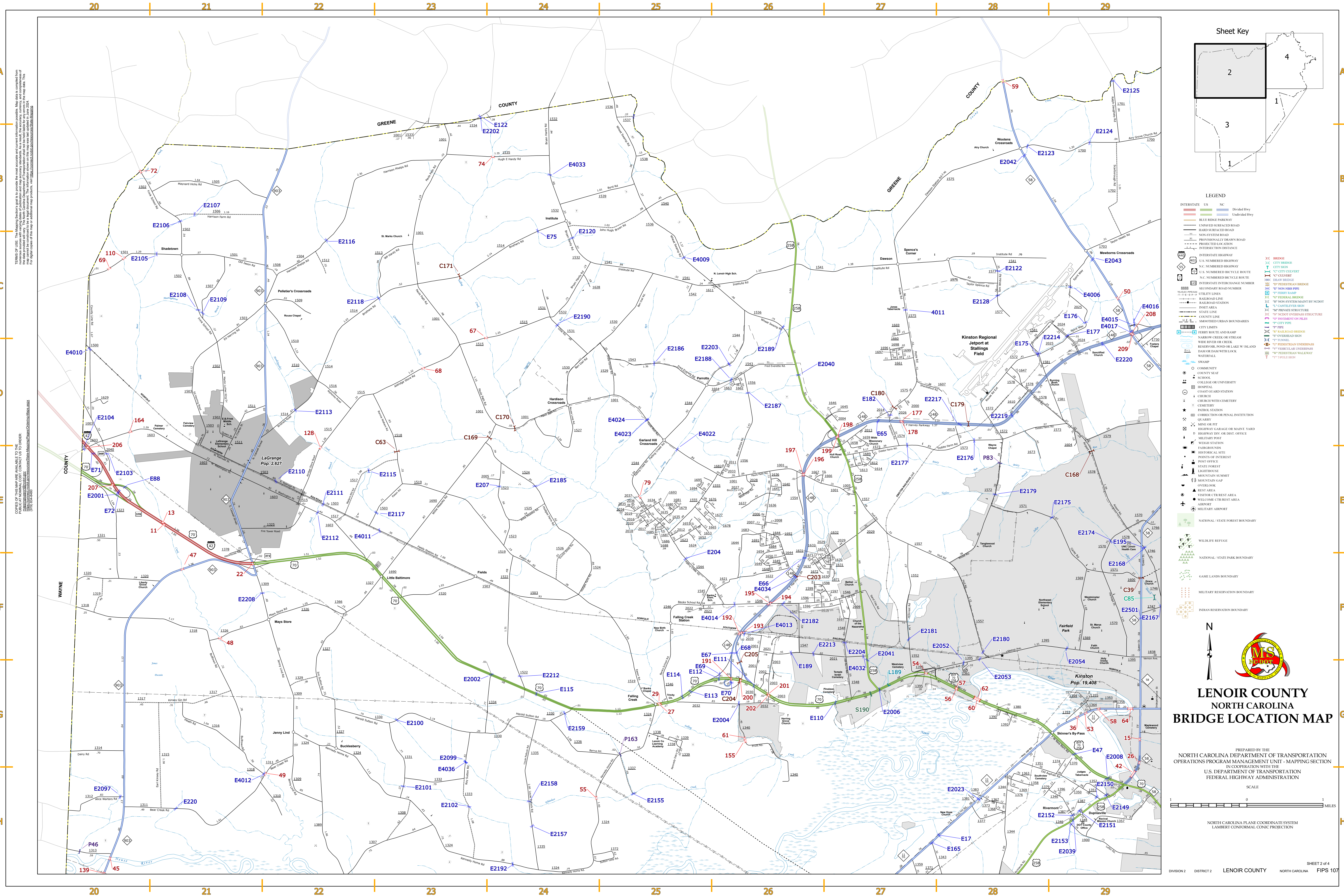
PREPARED BY THE NORTH CAROLINA DEPARTMENT OF TRANSPORTATION OPERATIONS PROGRAM MANAGEMENT UNIT - MAPPING SECTION IN COOPERATION WITH THE U.S. DEPARTMENT OF TRANSPORTATION FEDERAL HIGHWAY ADMINISTRATION



TERMS OF USE: The Mapping Section's goal is to provide the most accurate and current information possible. Map data is compiled from numerous sources with varying dates of publication and map accuracy standards. As a result, the accuracy, currency, and completeness of the data provided will vary. The North Carolina Department of Transportation shall not be held liable for any errors in the map data. This map cannot be construed to be a legal document. The information shown on this map was last updated in June 2024. For digital copies of this map or additional map products, visit <https://www.ncdot.gov/resources/State-Mapping>.

COPIES OF THIS MAP ARE AVAILABLE TO THE PUBLIC AT NOMINAL COST. CONTACT US TO ORDER: mapinfo@ncdot.gov (919) 834-8480

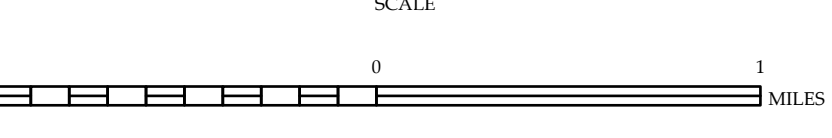
NORTH CAROLINA PLANE COORDINATE SYSTEM LAMBERT CONFORMAL CONIC PROJECTION



- LEGEND**
- INTERSTATE US
 - US NUMBERED HIGHWAY
 - U.S. NUMBERED BIWAY
 - N.C. NUMBERED BIWAY ROUTE
 - INTERSTATE INTERCHANGE NUMBER
 - SECONDARY ROAD NUMBER
 - UTILITY LINES
 - RAILROAD LINE
 - RAILROAD STATION
 - INSET AREA
 - STATE LINE
 - COUNTY LINE
 - SMOOTHED URBAN BOUNDARIES
 - CITY LIMITS
 - FERRY ROUTE AND RAMP
 - NARROW CREEK OR STREAM
 - WIDE RIVER OR CREEK
 - RESERVOIR, POND OR LAKE W/ ISLAND
 - DAM OR DAM WITH LOCK
 - NATURAL FILL
 - SWAMP
 - COMMUNITY
 - COUNTY SEAT
 - SCHOOL
 - COLLEGE OR UNIVERSITY
 - HOSPITAL
 - COAST GUARD STATION
 - CHURCH
 - CHURCH WITH CEMETERY
 - CEMETERY
 - PATROL STATION
 - CORRECTION OR PENAL INSTITUTION
 - QUARRY
 - MINE OR PIT
 - HIGHWAY GARAGE OR MAINT. YARD
 - HIGHWAY DIV. OR POST OFFICE
 - MILITARY POST
 - WEIGH STATION
 - CARBON PILE
 - HISTORICAL SITE
 - POINTS OF INTEREST
 - POST OFFICE
 - STATE FOREST
 - MOUNTAIN SUMMIT
 - LIGHTHOUSE
 - BEST AREA
 - VISITOR CENTER AREA
 - WELCOME CENTER AREA
 - MARKET
 - MILITARY AIRPORT
 - NATIONAL STATE FOREST BOUNDARY
 - WILDLIFE REFUGE
 - NATIONAL STATE PARK BOUNDARY
 - GAME LANDS BOUNDARY
 - MILITARY RESERVATION BOUNDARY
 - INDIAN RESERVATION BOUNDARY

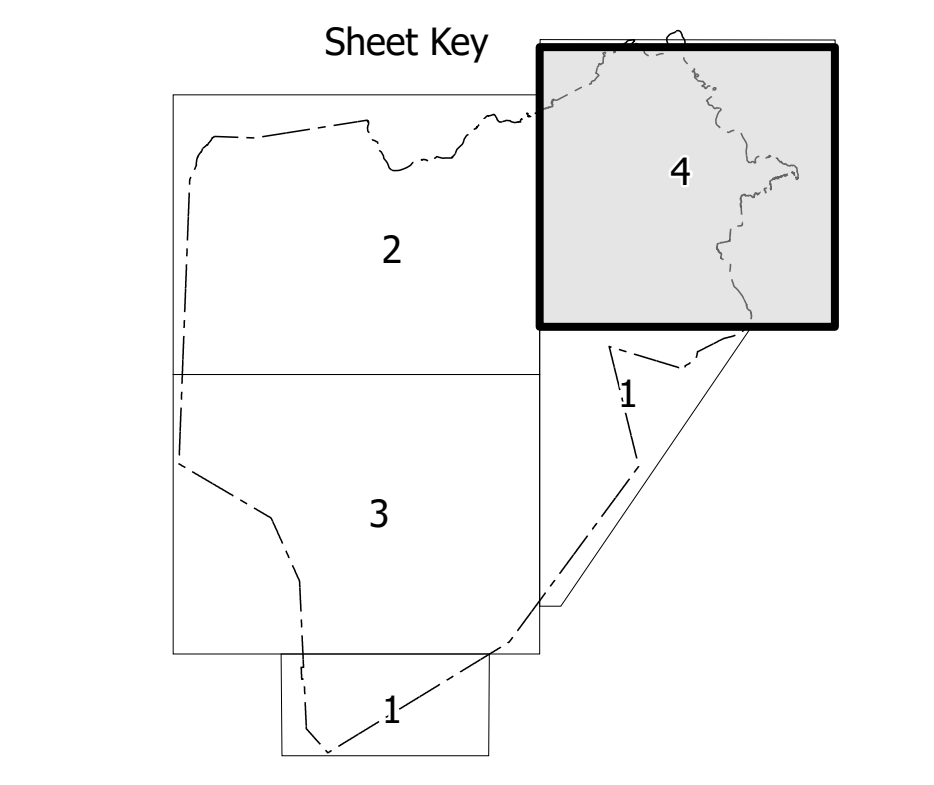
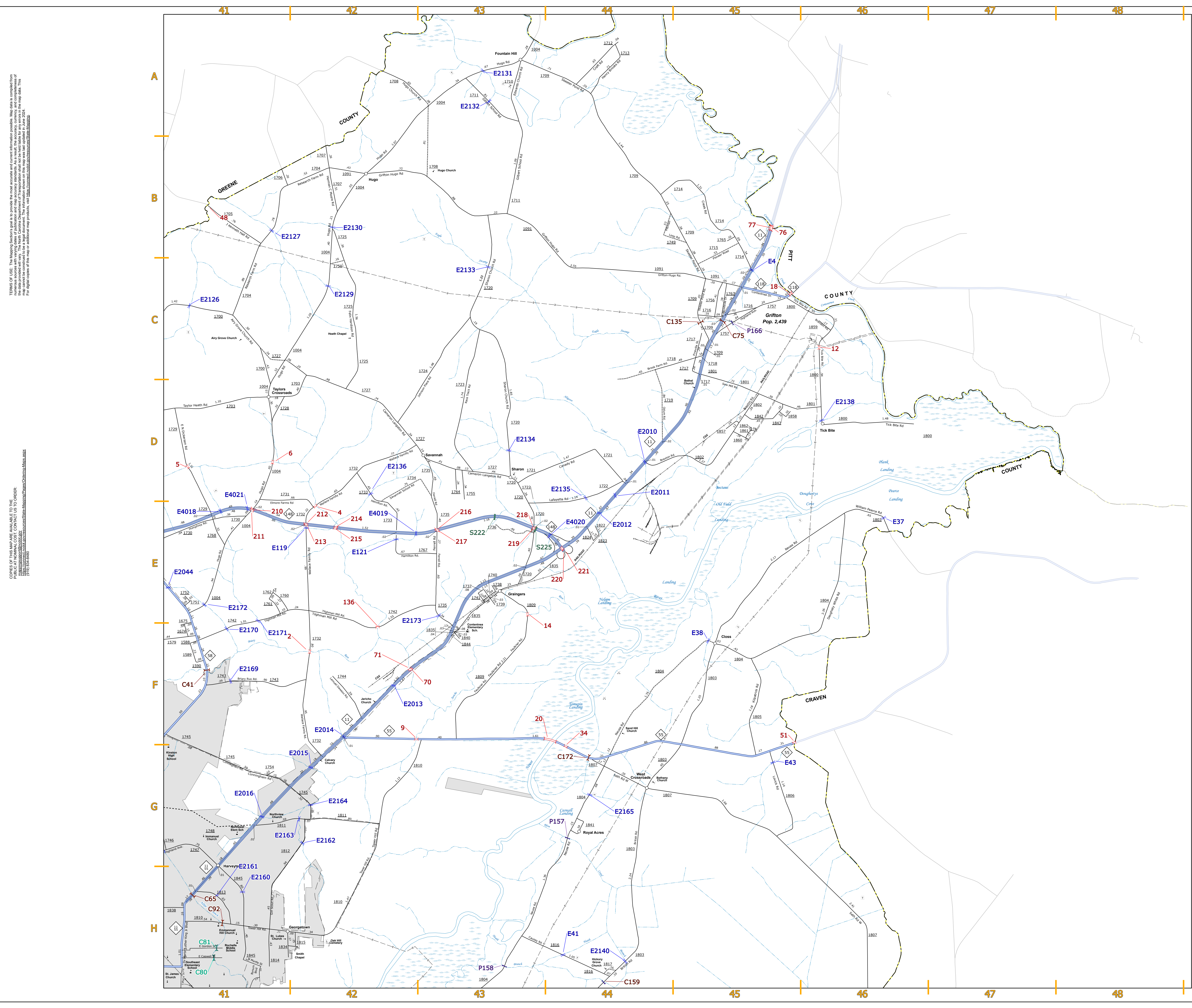
**LENOIR COUNTY
NORTH CAROLINA
BRIDGE LOCATION MAP**

PREPARED BY THE
NORTH CAROLINA DEPARTMENT OF TRANSPORTATION
OPERATIONS PROGRAM MANAGEMENT UNIT - MAPPING SECTION
IN COOPERATION WITH THE
U.S. DEPARTMENT OF TRANSPORTATION
FEDERAL HIGHWAY ADMINISTRATION



NORTH CAROLINA PLANE COORDINATE SYSTEM
LAMBERT CONFORMAL CONIC PROJECTION

THIS MAP IS THE PROPERTY OF THE NORTH CAROLINA DEPARTMENT OF TRANSPORTATION. IT IS TO BE USED ONLY FOR THE PURPOSES FOR WHICH IT WAS DESIGNED. THE USER ASSUMES ALL LIABILITY FOR ANY DAMAGE OR INJURY RESULTING FROM THE USE OF THIS MAP. THE INFORMATION ON THIS MAP WAS OBTAINED FROM THE BEST AVAILABLE DATA AS OF THE DATE OF PRINTING. THE INFORMATION ON THIS MAP WAS OBTAINED FROM THE BEST AVAILABLE DATA AS OF THE DATE OF PRINTING. THE INFORMATION ON THIS MAP WAS OBTAINED FROM THE BEST AVAILABLE DATA AS OF THE DATE OF PRINTING.



- LEGEND**
- INTERSTATE US NC
 - ROADWAY Undershot by
 - ROADWAY Undershot by
 - BLUE RIDGE PARKWAY
 - UNPAVED SURFACED ROAD
 - HARD SURFACED ROAD
 - NON-SYSTEM ROAD
 - PROFESSIONALLY DESIGN ROAD
 - PREDICTED LOCATION
 - INTERSECTION DISTANCE
 - INTERSTATE HIGHWAY
 - U.S. NUMBERED HIGHWAY
 - N.C. NUMBERED HIGHWAY
 - U.S. NUMBERED BICYCLE ROUTE
 - N.C. NUMBERED BICYCLE ROUTE
 - INTERSTATE INTERCHANGE NUMBER
 - SECONDARY ROAD NUMBER
 - UTILITY LINES
 - RAILROAD LINE
 - RAILROAD STATION
 - RAILROAD
 - STATE LINE
 - COUNTY LINE
 - SMOOTHED URBAN BOUNDARIES
 - CITY LIMITS
 - FERM RACE AND RAMP
 - NARROW CREEK OR STREAM
 - WIDE RIVER OR CREEK
 - RESERVOIR, POND OR LAKE W/ ISLAND
 - SHADY OR DAM WITH LOCK
 - WATERFALL
 - SWAMP
 - COMMUNITY
 - COUNTY SEAT
 - SCHOOL
 - HIGHER EDUCATION
 - HOSPITAL
 - UNDESIGNED STATION
 - CHURCH
 - CEMETERY
 - CEMETERY
 - CORRECTION OR PENAL INSTITUTION
 - SQUARE
 - MINOR OR PIT
 - BIORWAY GARAGE OR MAIN YARD
 - BROADWAY OR MAIN OFFICE
 - MILITARY POST
 - REGISTRATION
 - FABRICATIONS
 - HISTORICAL SITE
 - POINTS OF INTEREST
 - POST OFFICE
 - STATE FOREST
 - LIGHTHOUSE
 - MOUNTAIN SUMMIT
 - MOUNTAIN GAP
 - OVERLOOK
 - REST AREA
 - VISITOR CENTER AREA
 - WELCOME CENTER AREA
 - AIRPORT
 - MILITARY AIRPORT
 - NATIONAL STATE FOREST BOUNDARY
 - WILDLIFE REFUGE
 - NATIONAL STATE PARK BOUNDARY
 - GAME LAND BOUNDARY
 - MILITARY RESERVATION BOUNDARY
 - INDIAN RESERVATION BOUNDARY
 - BRIDGE
 - CITY BRIDGE
 - CITY CULVERT
 - CITY CULVERT
 - CITY CULVERT
 - BLAW BRIDGE
 - FEDERIAN BRIDGE
 - NON-SYSTEM MAINT BY NCDOT
 - FERRY LAMP
 - FEDERAL BRIDGE
 - NON-SYSTEM MAINT BY NCDOT
 - CASTLETON SIGN
 - PRIVATE STRUCTURE
 - ROADWAY ON FILE
 - CITY PIPE
 - FIRE
 - BAR ROAD BRIDGE
 - OVERHEAD SIGN
 - VEHICULAR UNDERPASS
 - VEHICULAR UNDERPASS
 - FEDERIAN UNDERPASS
 - TRIPLE SIGN

N

LENOIR COUNTY NORTH CAROLINA BRIDGE LOCATION MAP

PREPARED BY THE
NORTH CAROLINA DEPARTMENT OF TRANSPORTATION
OPERATIONS PROGRAM MANAGEMENT UNIT - MAPPING SECTION
IN COOPERATION WITH THE
U.S. DEPARTMENT OF TRANSPORTATION
FEDERAL HIGHWAY ADMINISTRATION

SCALE

NORTH CAROLINA PLANE COORDINATE SYSTEM
LAMBERT CONFORMAL CONIC PROJECTION

THIS IS A PRELIMINARY MAP. It is subject to change without notice. The data is derived from numerous sources with varying degrees of accuracy. As a result, the accuracy, completeness, and reliability of the information shown on this map may not be guaranteed. The information shown on this map was last updated on 08/20/2024. For digital copies of this map or additional map products, visit <https://www.ncdot.gov/transportation/operations/program-management/unit-mapping-section>.

CONTACT FOR MORE INFORMATION OR TO PURCHASE: maps@ncdot.gov OR 1-800-368-7828.