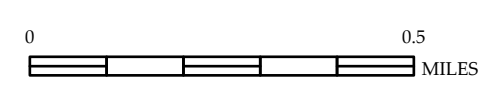
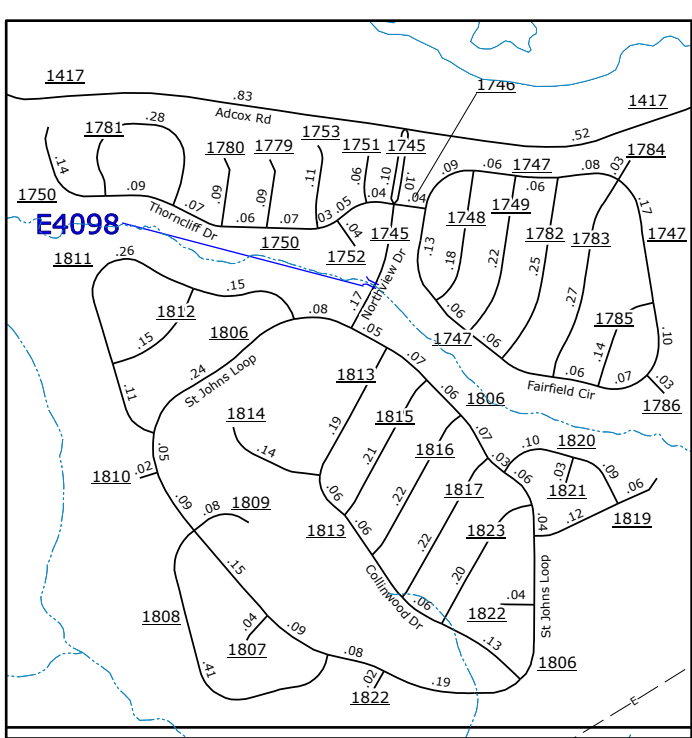
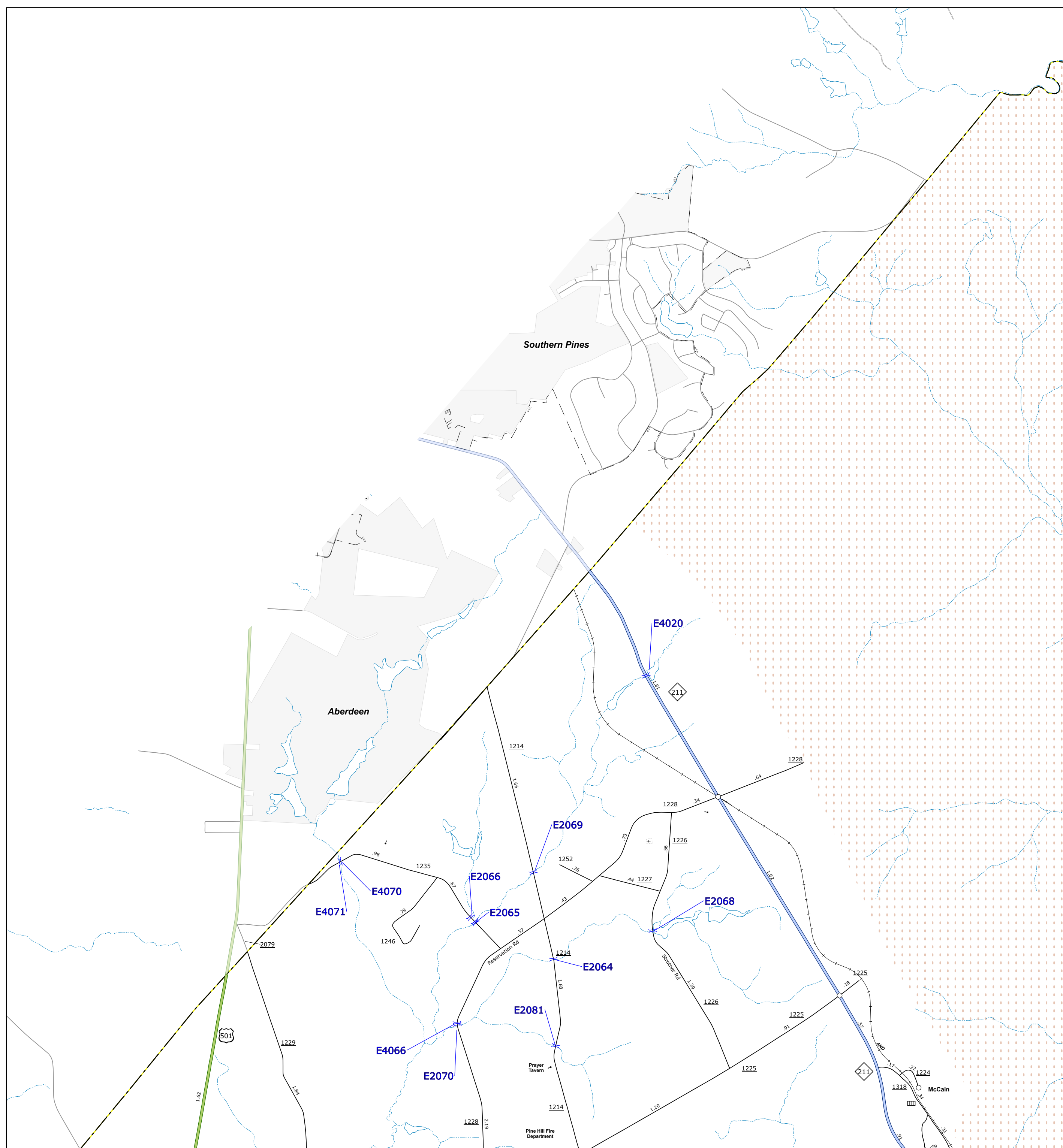
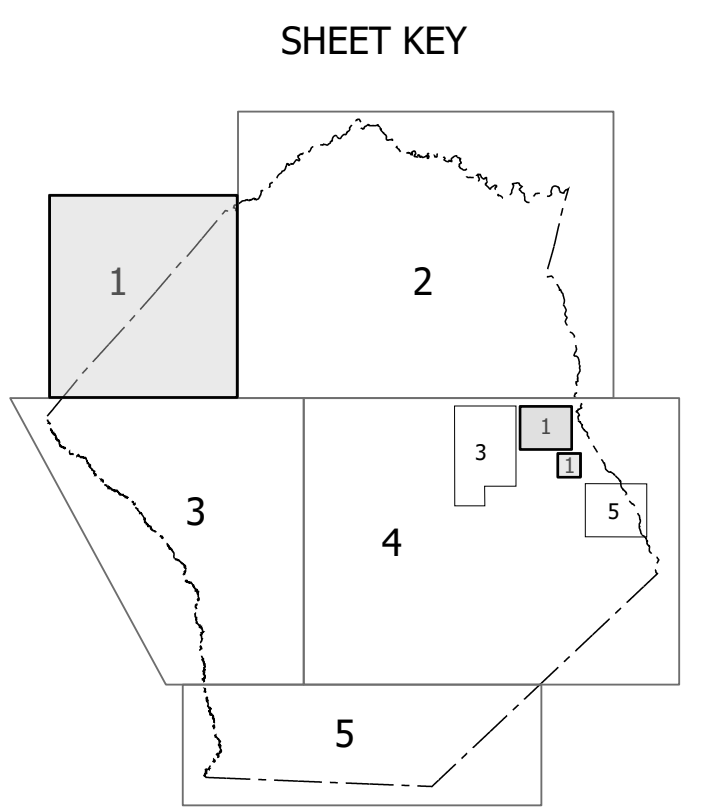
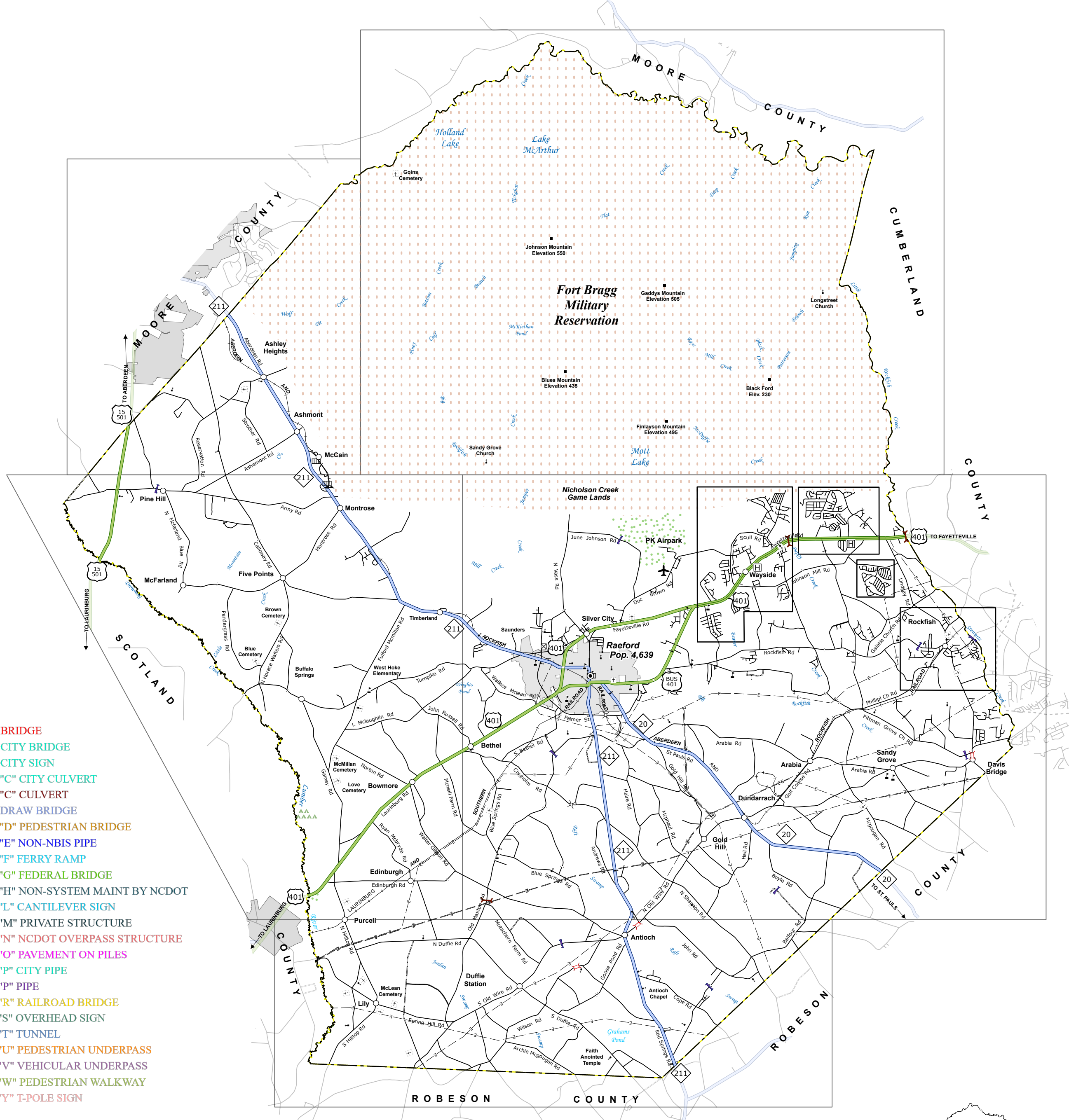
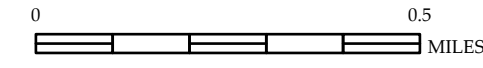
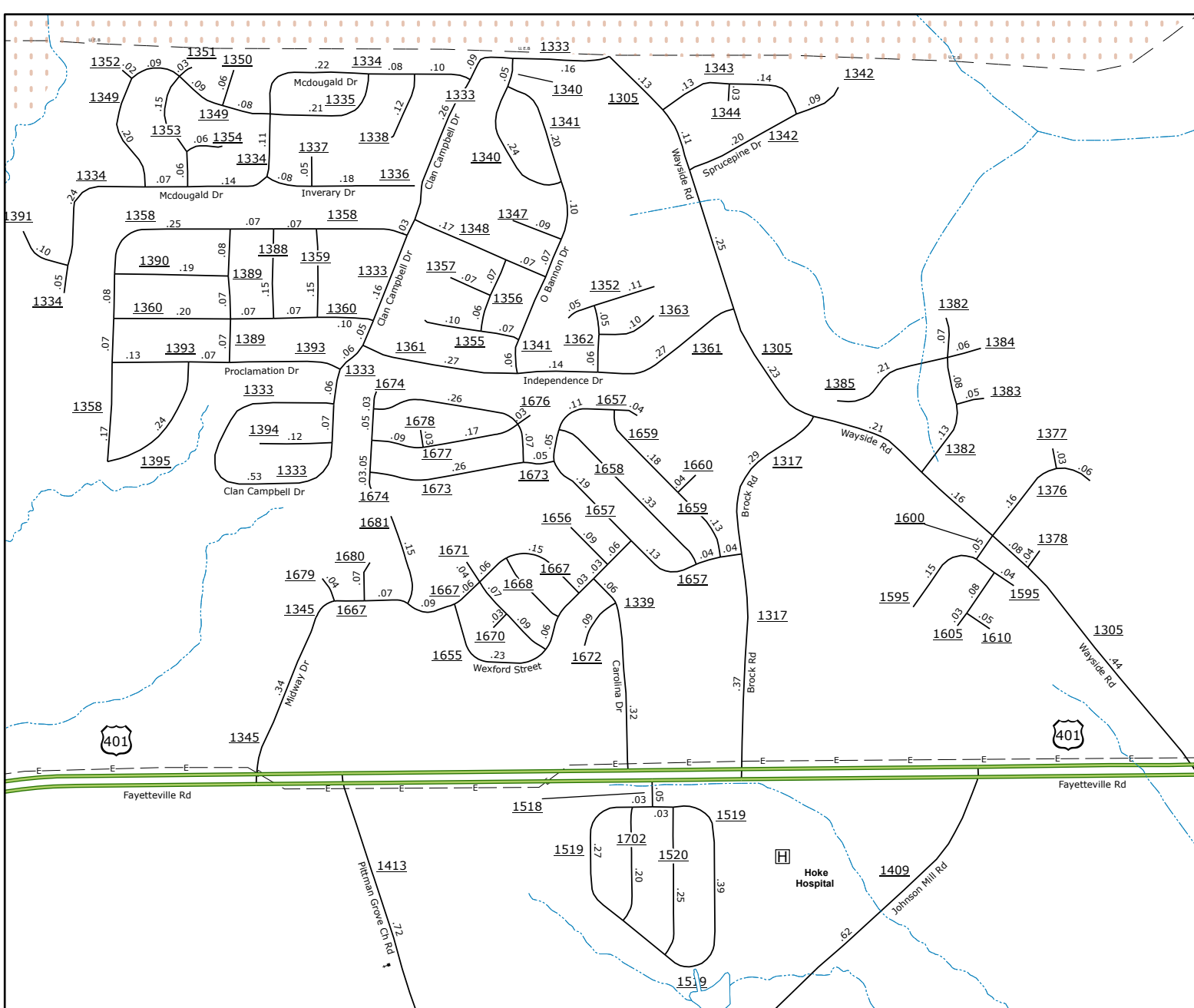


THIS MAP IS THE PROPERTY OF THE STATE OF NORTH CAROLINA. IT IS TO BE USED ONLY FOR THE PURPOSES FOR WHICH IT WAS DESIGNED. THE STATE OF NORTH CAROLINA AND ITS AGENCIES MAKE NO WARRANTY, EXPRESS OR IMPLIED, AS TO THE ACCURACY, COMPLETENESS, OR SUITABILITY OF THIS MAP FOR ANY OTHER PURPOSE. THE INFORMATION ON THIS MAP WAS OBTAINED BY THE STATE OF NORTH CAROLINA FROM VARIOUS SOURCES, INCLUDING BUT NOT LIMITED TO, THE FEDERAL BUREAU OF SURVEYING, THE U.S. GEOLOGICAL SURVEY, AND OTHER FEDERAL AGENCIES. THE STATE OF NORTH CAROLINA AND ITS AGENCIES MAKE NO WARRANTY, EXPRESS OR IMPLIED, AS TO THE ACCURACY, COMPLETENESS, OR SUITABILITY OF THIS MAP FOR ANY OTHER PURPOSE. THE INFORMATION ON THIS MAP WAS OBTAINED BY THE STATE OF NORTH CAROLINA FROM VARIOUS SOURCES, INCLUDING BUT NOT LIMITED TO, THE FEDERAL BUREAU OF SURVEYING, THE U.S. GEOLOGICAL SURVEY, AND OTHER FEDERAL AGENCIES.

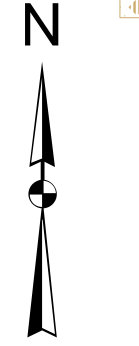
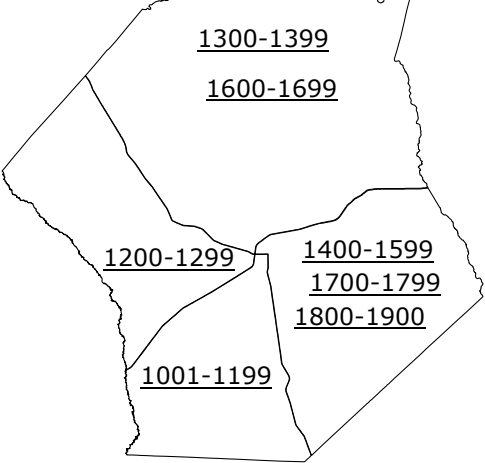
COPIES OF THIS MAP ARE AVAILABLE TO THE PUBLIC AT NOMINAL COST. CONTACT US TO ORDER: www.ncdot.gov OR 1-800-368-6888



- BRIDGE
- CITY BRIDGE
- CITY SIGN
- "C" CITY CULVERT
- "C" CULVERT
- DRAW BRIDGE
- "D" PEDESTRIAN BRIDGE
- "F" NON-NBIS PIPE
- "F" FERRY RAMP
- "G" FEDERAL BRIDGE
- "H" NON-SYSTEM MAINT BY NCDOT
- "L" CANTILEVER SIGN
- "M" PRIVATE STRUCTURE
- "N" NCDOT OVERPASS STRUCTURE
- "O" PAVEMENT ON PILES
- "P" CITY PIPE
- "P" PIPE
- "R" RAILROAD BRIDGE
- "S" OVERHEAD SIGN
- "T" TUNNEL
- "U" PEDESTRIAN UNDERPASS
- "V" VEHICULAR UNDERPASS
- "W" PEDESTRIAN WALKWAY
- "Y" T-POLE SIGN

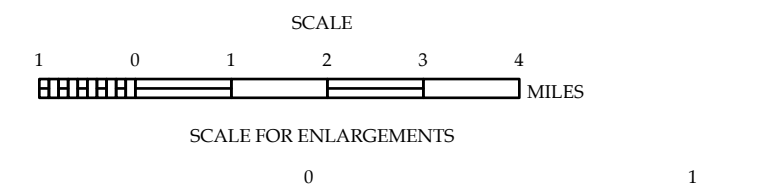


- LEGEND**
- INTERSTATE US
 - INTERSTATE NC
 - Divided Hwy
 - Undivided Hwy
 - BLUE RIDGE PARKWAY
 - UNPAVED SURFACED ROAD
 - HARD SURFACED ROAD
 - NON-SYSTEM ROAD
 - PROVISIONALLY DRAWN ROAD
 - PROJECTED LOCATION
 - INTERSECTING DISTANCE
 - INTERSTATE HIGHWAY
 - U.S. NUMBERED HIGHWAY
 - N.C. NUMBERED HIGHWAY
 - U.S. NUMBERED BICYCLE ROUTE
 - N.C. NUMBERED BICYCLE ROUTE
 - INTERSTATE INTERCHANGE NUMBER
 - SECONDARY ROAD NUMBER
 - THRUWAY LINES
 - RAILROAD LINE
 - RAILROAD STATION
 - INSET AREA
 - STATE LINE
 - COUNTY LINE
 - SMOOTHED URBAN BOUNDARIES
 - CITY LIMITS
 - FERRY ROUTE AND RAMP
 - NARROW CREEK OR STREAM
 - WIDE RIVER OR CREEK
 - RESERVOIR, POND OR LAKE W/ ISLAND
 - DAM OR DAM WITH LOCK
 - WATERFALL
 - SWAMP
 - COMMUNITY
 - COUNTY SEAT
 - SCHOOL
 - COLLEGE OR UNIVERSITY
 - HOSPITAL
 - COAST GUARD STATION
 - CHURCH
 - CHURCH WITH CEMETERY
 - CEMETERY
 - PATROL STATION
 - CORRECTION OR PENAL INSTITUTION
 - QUARRY
 - MINE OR PIT
 - HIGHWAY GARAGE OR MAINT. YARD
 - HIGHWAY DIV. OR DIST. OFFICE
 - MILITARY POST
 - WEIGH STATION
 - FAIRGROUNDS
 - HISTORICAL SITE
 - POINTS OF INTEREST
 - POST OFFICE
 - STATE FOREST
 - LIGHTHOUSE
 - MOUNTAIN SUMMIT
 - MOUNTAIN GAP
 - OVERLOOK
 - REST AREA
 - VISITOR CTR/REST AREA
 - WELCOME CTR/REST AREA
 - AIRPORT
 - MILITARY AIRPORT
 - NATIONAL / STATE FOREST BOUNDARY
 - WILDLIFE REFUGE
 - NATIONAL / STATE PARK BOUNDARY
 - GAME LANDS BOUNDARY
 - MILITARY RESERVATION BOUNDARY
 - INDIAN RESERVATION BOUNDARY

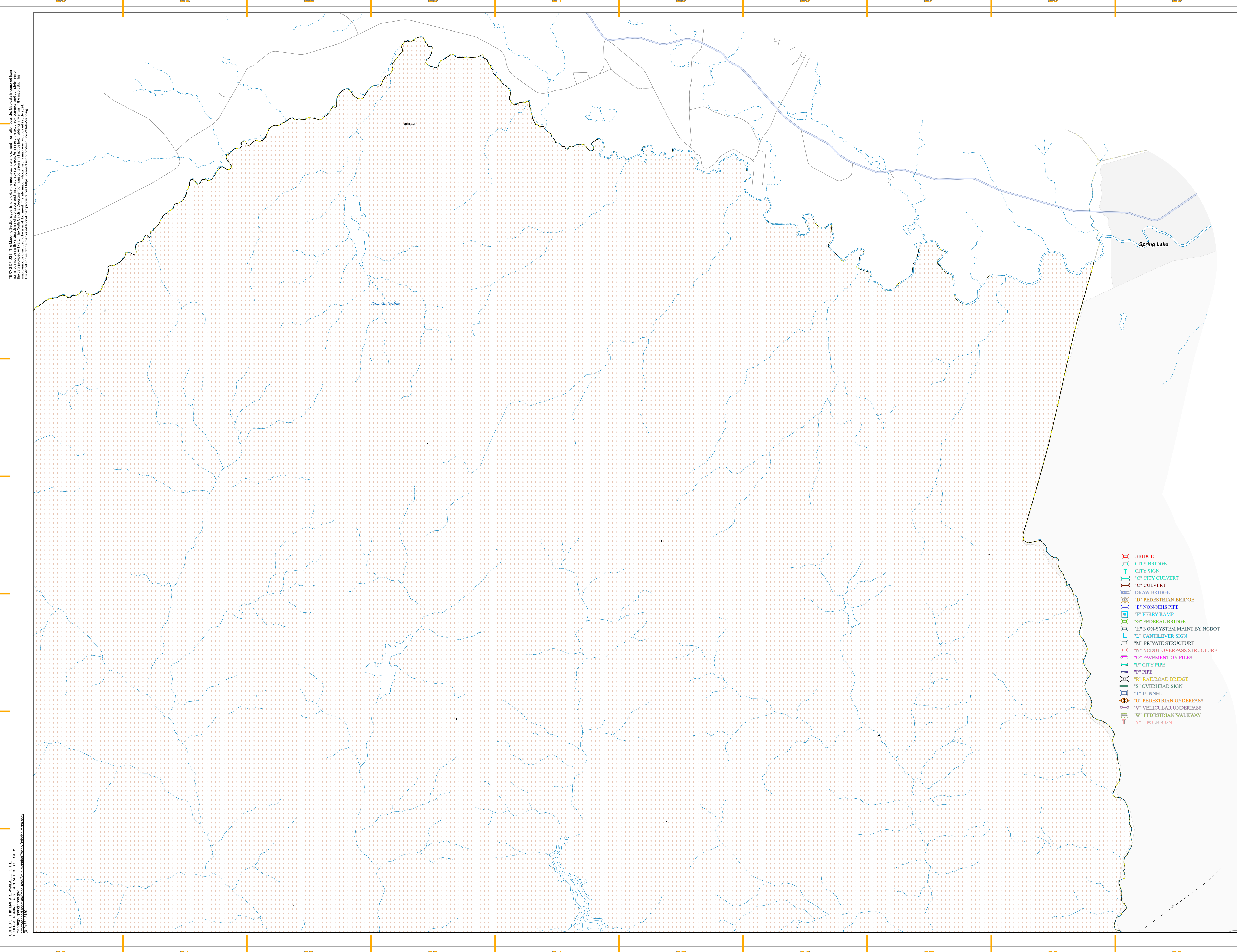


HOKE COUNTY NORTH CAROLINA BRIDGE LOCATION MAP

PREPARED BY THE
NORTH CAROLINA DEPARTMENT OF TRANSPORTATION
OPERATIONS PROGRAM MANAGEMENT UNIT - MAPPING SECTION
IN COOPERATION WITH THE
U.S. DEPARTMENT OF TRANSPORTATION
FEDERAL HIGHWAY ADMINISTRATION

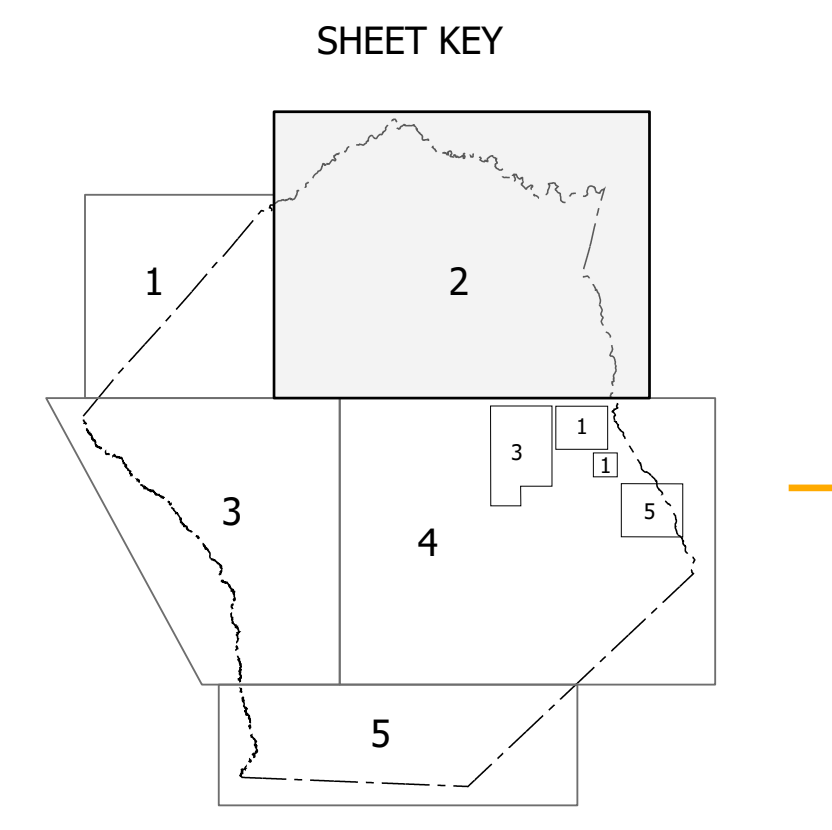


NORTH CAROLINA PLANE COORDINATE SYSTEM
LAMBERT CONFORMAL CONIC PROJECTION
SHEET 1 OF 5



STATE OF NORTH CAROLINA. The North Carolina Department of Transportation (NCDOT) is not responsible for the accuracy of the information shown on this map. The data is compiled from numerous sources with varying dates of publication and map accuracy standards. As a result, the accuracy, currency, and completeness of the information shown on this map cannot be guaranteed. The information shown on this map was last updated on 08/20/2024. For digital copies of this map or additional map products, visit <https://www.ncdot.gov/Information/MapProducts/MapProducts.aspx>.

PORTION OF THIS MAP WAS OBTAINED FROM THE PUBLIC AT NOMINAL COST. CONTACT US TO ORDER: maps@ncdot.gov or call 1-800-368-6888.



LEGEND

- INTERSTATE US NC Divided Hwy
- UNPAVED SURFACED ROAD
- HARD SURFACED ROAD
- NON-SYSTEM ROAD
- PROVISIONALLY DRAWN ROAD
- PROTECTED LOCATION
- INTERSECTION DISTANCE
- INTERSTATE HIGHWAY
- U.S. NUMBERED HIGHWAY
- N.C. NUMBERED HIGHWAY
- U.S. NUMBERED BICYCLE ROUTE
- N.C. NUMBERED BICYCLE ROUTE
- INTERSTATE INTERCHANGE NUMBER
- SECONDARY ROAD NUMBER
- UTILITY LINES
- RAILROAD LINE
- RAILROAD STATION
- STATE LINE
- COUNTY LINE
- SMOOTHED URBAN BOUNDARIES
- CITY LIMITS
- FERRY ROUTE AND RAMP
- NARROW CREEK OR STREAM
- WIDE RIVER OR CREEK
- RESERVOIR, POND OR LAKE W/ ISLAND
- DAM OR DAM WITH LOCK
- WATERFALL
- SWAMP
- COMMUNITY
- COUNTY SEAT
- SCHOOL
- COLLEGE OR UNIVERSITY
- HOSPITAL
- COAST GUARD STATION
- CHURCH
- CHURCH WITH CEMETERY
- CEMETERY
- PATROL STATION
- CORRECTION OR PENAL INSTITUTION
- QUARRY
- MINE OR PIT
- HIGHWAY GARAGE OR MAINT. YARD
- HIGHWAY DIV. OR DIST. OFFICE
- MILITARY POST
- WEIGH STATION
- FAIRGROUNDS
- HISTORICAL SITE
- POINTS OF INTEREST
- POST OFFICE
- STATE FOREST
- LIGHTHOUSE
- MOUNTAIN SUMMIT
- MOUNTAIN GAP
- OVERLOOK
- REST AREA
- VISITOR CTR/REST AREA
- WELCOME CTR/REST AREA
- AIRPORT
- MILITARY AIRPORT
- NATIONAL / STATE FOREST BOUNDARY
- WILDLIFE REFUGE
- NATIONAL / STATE PARK BOUNDARY
- GAME LANDS BOUNDARY
- MILITARY RESERVATION BOUNDARY
- INDIAN RESERVATION BOUNDARY

- BRIDGE
- CITY BRIDGE
- CITY SIGN
- "C" CITY CULVERT
- "C" CULVERT
- DRAW BRIDGE
- "P" PEDESTRIAN BRIDGE
- "N" NON-SIBS PIPE
- "F" FERRY RAMP
- "G" FEDERAL BRIDGE
- "H" NON-SYSTEM MAINT BY NCDOT
- "L" CANTILEVER SIGN
- "M" PRIVATE STRUCTURE
- "N" NCDOT OVERPASS STRUCTURE
- "O" PAVEMENT ON PILES
- "P" CITY PIPE
- "P" PIPE
- "R" RAILROAD BRIDGE
- "S" OVERHEAD SIGN
- "T" TUNNEL
- "U" PEDESTRIAN UNDERPASS
- "V" VEHICULAR UNDERPASS
- "W" PEDESTRIAN WALKWAY
- "Y" T-POLE SIGN

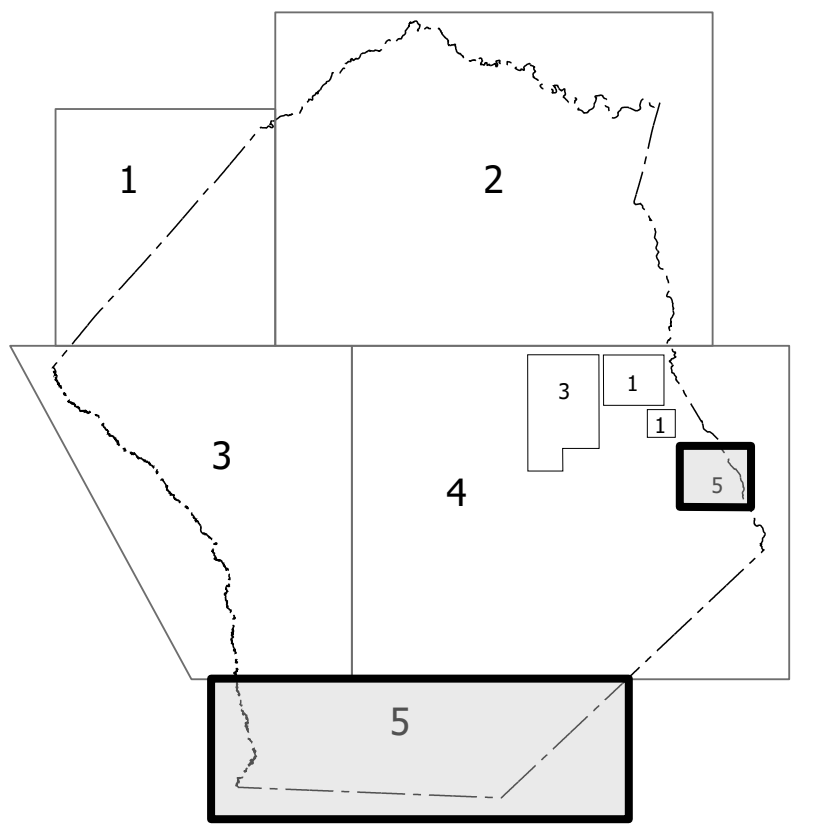
HOKE COUNTY
 NORTH CAROLINA
BRIDGE LOCATION MAP

PREPARED BY THE
 NORTH CAROLINA DEPARTMENT OF TRANSPORTATION
 OPERATIONS PROGRAM MANAGEMENT UNIT - MAPPING SECTION
 IN COOPERATION WITH THE
 U.S. DEPARTMENT OF TRANSPORTATION
 FEDERAL HIGHWAY ADMINISTRATION

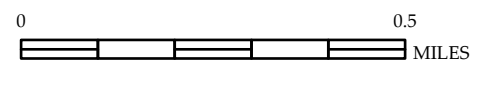
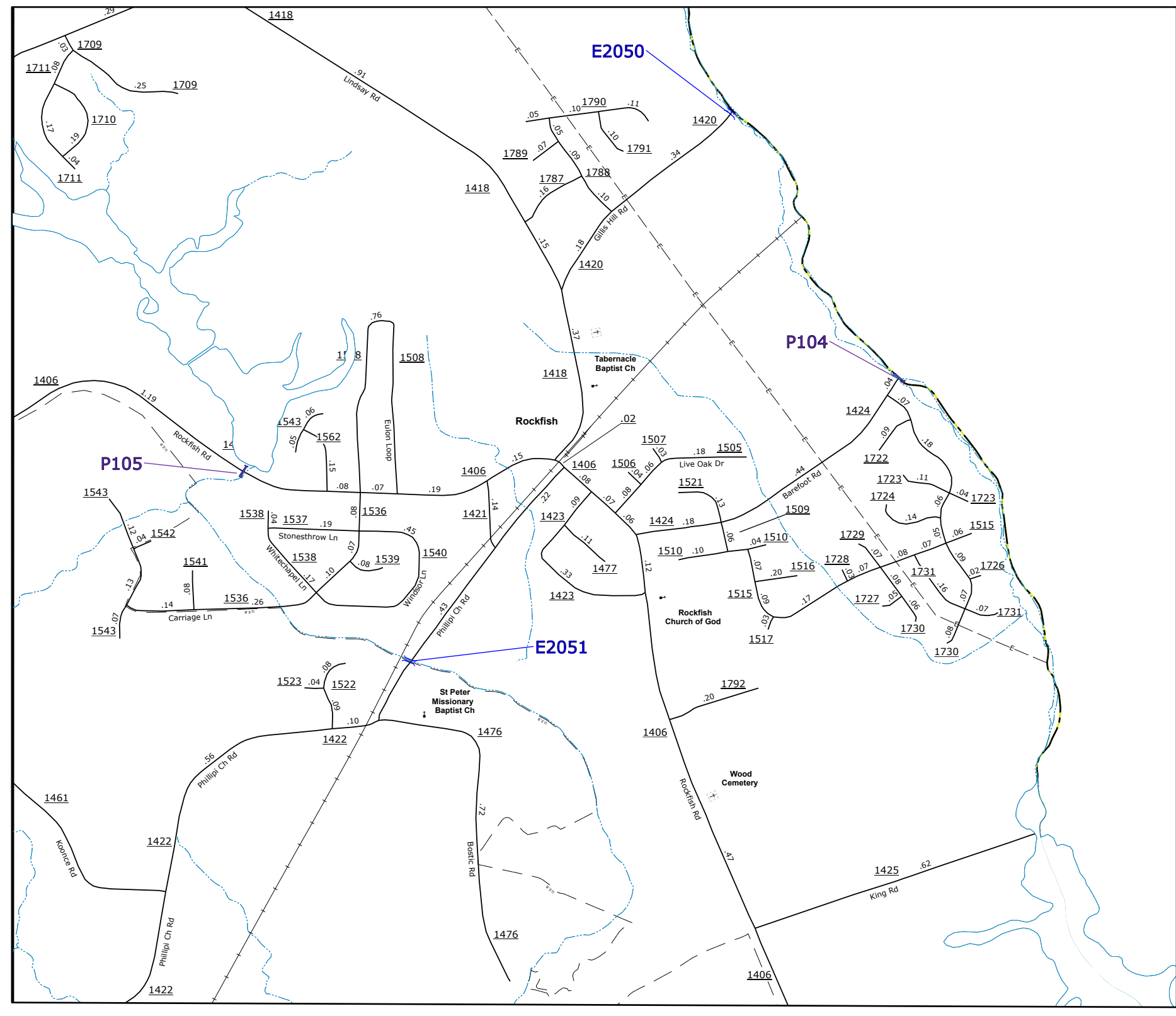
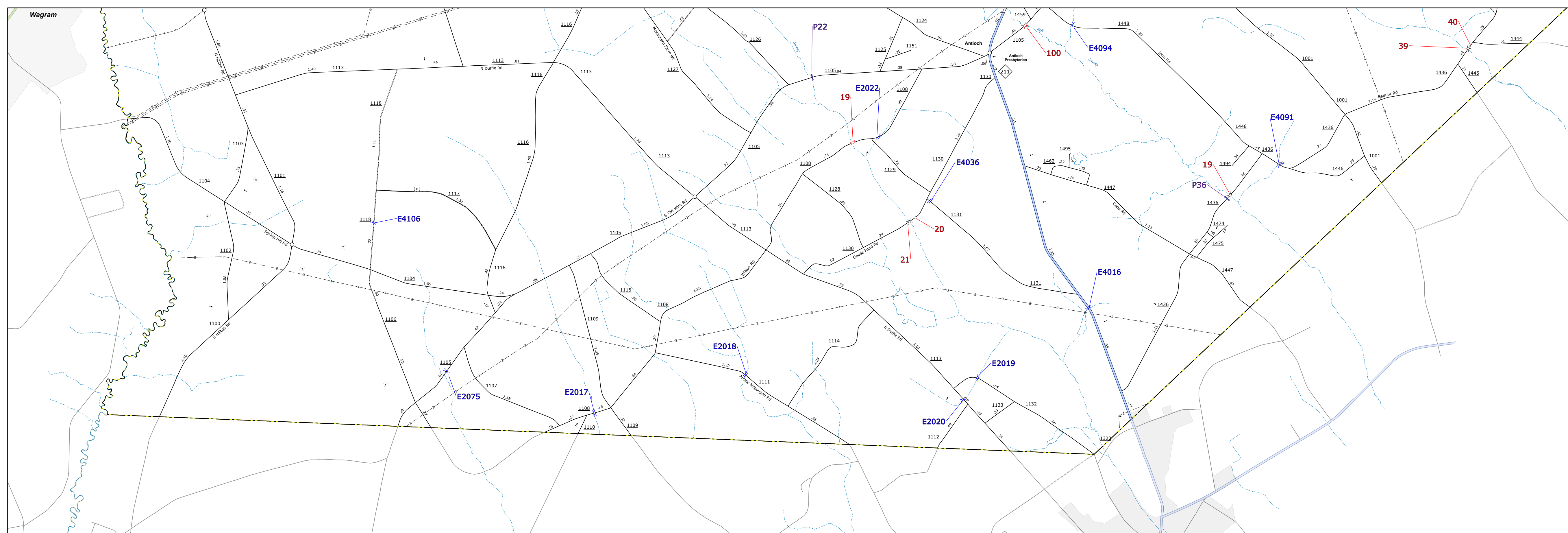
SCALE

NORTH CAROLINA PLANE COORDINATE SYSTEM
 LAMBERT CONFORMAL CONIC PROJECTION

SHEET 2 of 5

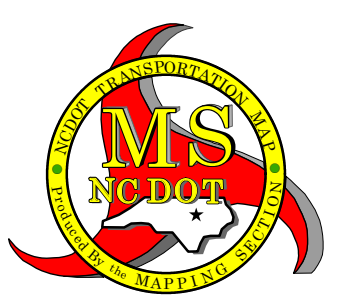
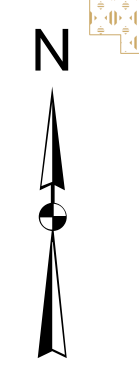


THIS IS A PRELIMINARY MAP. THE MAP IS NOT TO BE USED FOR CONSTRUCTION OR AS A BASIS FOR ANY LEGAL ACTION. THE USER ASSUMES ALL LIABILITY FOR ANY DAMAGE OR LOSS OF ANY KIND, INCLUDING REASONABLE ATTORNEY'S FEES, ARISING FROM THE USE OF THIS MAP. THE USER AGREES TO HOLD THE STATE OF NORTH CAROLINA HARMLESS FROM ANY SUCH DAMAGE OR LOSS. THE STATE OF NORTH CAROLINA DOES NOT WARRANT THE ACCURACY, COMPLETENESS, OR TIMELINESS OF THE INFORMATION CONTAINED IN THIS MAP. THE INFORMATION ON THIS MAP WAS OBTAINED FROM AERIAL PHOTOGRAPHY AND OTHER SOURCES. THE STATE OF NORTH CAROLINA DOES NOT WARRANT THE ACCURACY, COMPLETENESS, OR TIMELINESS OF THE INFORMATION CONTAINED IN THIS MAP. THE INFORMATION ON THIS MAP WAS OBTAINED FROM AERIAL PHOTOGRAPHY AND OTHER SOURCES.



- BRIDGE
- CITY BRIDGE
- CITY SIGN
- "C" CITY CULVERT
- "C" CULVERT
- DRAW BRIDGE
- "D" PEDESTRIAN BRIDGE
- "E" NON-NBIS PIPE
- "F" FERRY RAMP
- "G" FEDERAL BRIDGE
- "H" NON-SYSTEM MAINT BY NCDOT
- "L" CANTILEVER SIGN
- "M" PRIVATE STRUCTURE
- "N" NCDOT OVERPASS STRUCTURE
- "O" PAVEMENT ON PILES
- "P" CITY PIPE
- "P" PIPE
- "R" RAILROAD BRIDGE
- "S" OVERHEAD SIGN
- "T" TUNNEL
- "U" PEDESTRIAN UNDERPASS
- "V" VEHICULAR UNDERPASS
- "W" PEDESTRIAN WALKWAY
- "T" T-POLE SIGN

- LEGEND**
- INTERSTATE - US
 - INTERSTATE - NC
 - Divided Hwy
 - Undivided Hwy
 - BLUE RIDGE PARKWAY
 - UNPAVED SURFACED ROAD
 - HARD SURFACED ROAD
 - NON-SYSTEM ROAD
 - PROVISIONALLY DRAWN ROAD
 - INTERSECTION DISTANCE
 - PROJECTED LOCATION
 - INTERCHANGE DISTANCE
 - INTERSTATE HIGHWAY
 - U.S. NUMBERED HIGHWAY
 - N.C. NUMBERED HIGHWAY
 - U.S. NUMBERED BICYCLE ROUTE
 - N.C. NUMBERED BICYCLE ROUTE
 - INTERSTATE INTERCHANGE NUMBER
 - SECONDARY ROAD NUMBER
 - UTILITY LINES
 - RAILROAD LINE
 - RAILROAD STATION
 - INSET AREA
 - STATE LINE
 - COUNTY LINE
 - SMOOTHED URBAN BOUNDARIES
 - CITY LIMITS
 - FERRY ROUTE AND RAMP
 - NARROW CREEK OR STREAM
 - WIDE RIVER OR CREEK
 - RESERVOIR, POND OR LAKE W/ ISLAND
 - DAM OR DAM WITH LOCK
 - WATERFALL
 - SWAMP
 - COMMUNITY
 - COUNTY SEAT
 - SCHOOL
 - COLLEGE OR UNIVERSITY
 - HOSPITAL
 - COAST GUARD STATION
 - CHURCH
 - CHURCH WITH CEMETERY
 - CEMETERY
 - PATROL STATION
 - CORRECTION OR PENAL INSTITUTION
 - QUARRY
 - MINE OR PIT
 - HIGHWAY GARAGE OR MAINT. YARD
 - HIGHWAY DIV. OR DIST. OFFICE
 - MILITARY POST
 - WEIGH STATION
 - FAIRGROUNDS
 - HISTORICAL SITE
 - POINTS OF INTEREST
 - POST OFFICE
 - STATE FOREST
 - LIGHTHOUSE
 - MOUNTAIN SUMMIT
 - MOUNTAIN GAP
 - OVERLOOK
 - REST AREA
 - VISITOR CTR/REST AREA
 - WELCOME CTR/REST AREA
 - AIRPORT
 - MILITARY AIRPORT
 - NATIONAL / STATE FOREST BOUNDARY
 - WILDLIFE REFUGE
 - NATIONAL / STATE PARK BOUNDARY
 - GAME LANDS BOUNDARY
 - MILITARY RESERVATION BOUNDARY
 - INDIAN RESERVATION BOUNDARY



HOKE COUNTY NORTH CAROLINA BRIDGE LOCATION MAP

PREPARED BY THE NORTH CAROLINA DEPARTMENT OF TRANSPORTATION OPERATIONS PROGRAM MANAGEMENT UNIT - MAPPING SECTION IN COOPERATION WITH THE U.S. DEPARTMENT OF TRANSPORTATION FEDERAL HIGHWAY ADMINISTRATION



NORTH CAROLINA PLANE COORDINATE SYSTEM LAMBERT CONFORMAL CONIC PROJECTION

COPIES OF THIS MAP ARE AVAILABLE TO THE PUBLIC AT AN ANNUAL COST CONTACT US TO ORDER: (919) 858-4840