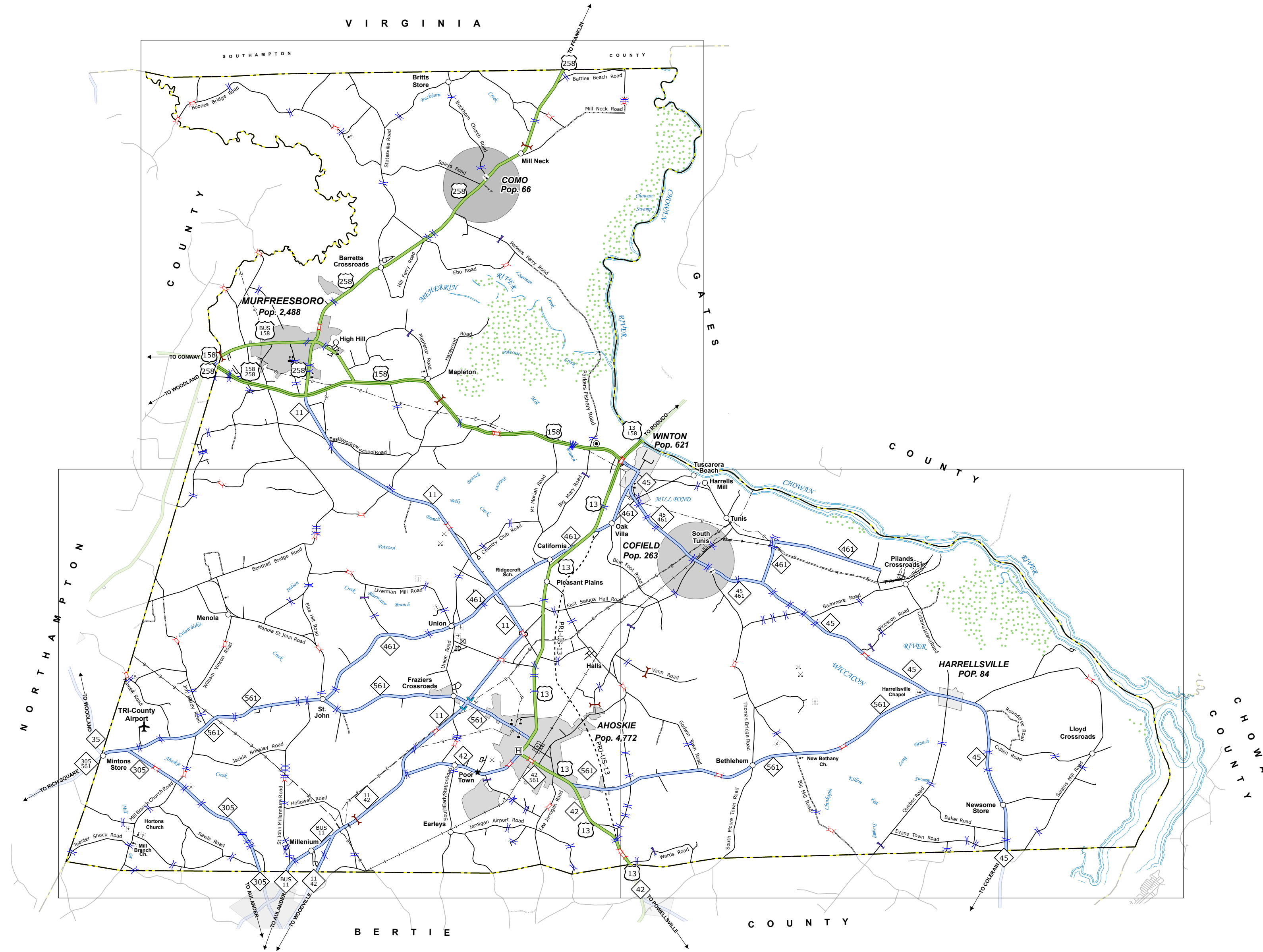
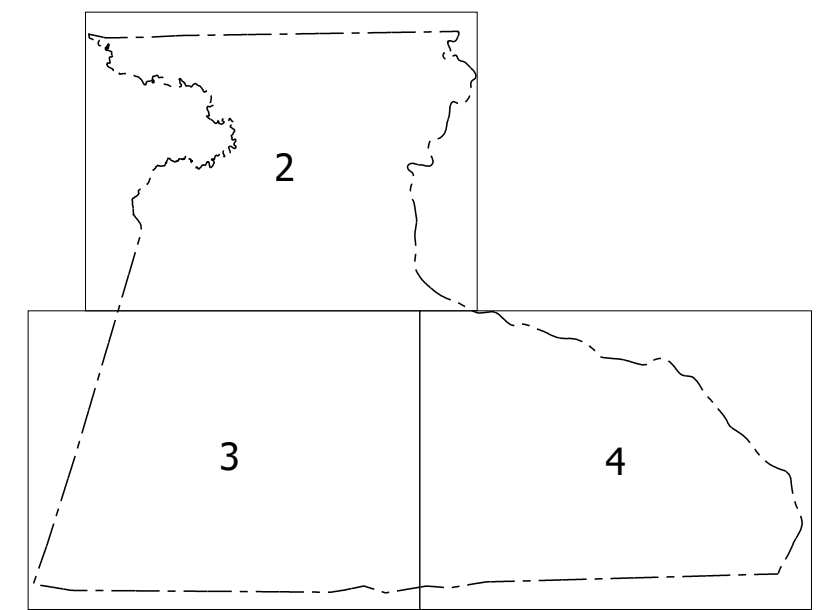
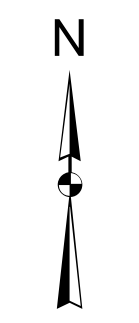


Sheet Key



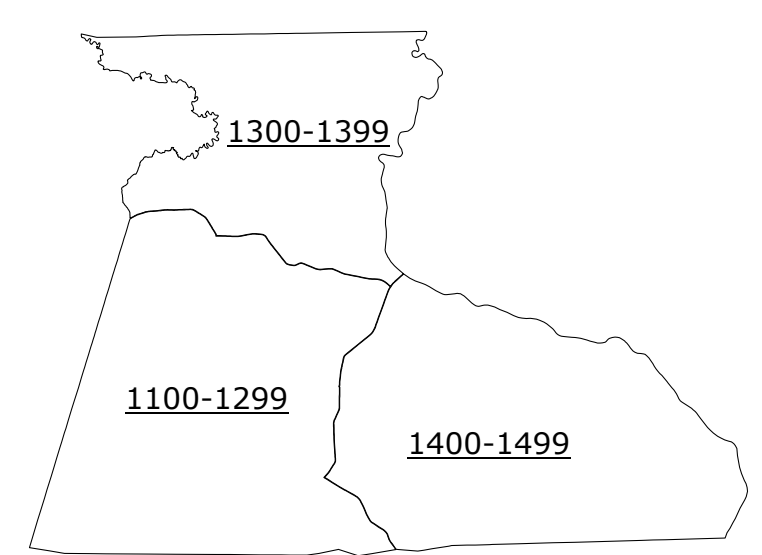
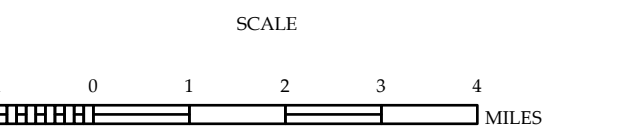
LEGEND

- INTERSTATE HIGHWAY
- U.S. NUMBERED HIGHWAY
- U.S. NUMBERED BI-CYCLE ROUTE
- N.C. NUMBERED BI-CYCLE ROUTE
- INTERSTATE INTERCHANGE NUMBER
- SECONDARY ROAD NUMBER
- UTILITY LINES
- RAILROAD LINE
- RAILROAD STATION
- ROUTE AREA
- STATE LINE
- COUNTY LINE
- ANOTHER URBAN BOUNDARY
- CITY LIMITS
- TURBO ROUTE AND RAMP
- NARROW CREEK OR STREAM
- WIDE RIVER OR CREEK
- RESERVOIR, POND OR LAKE W/ ISLAND
- DAM OR DAM WITH LOCK
- WATERFALL
- SWAMP
- COMMUNITY
- COUNTY SEAT
- SCHOOL
- COLLEGE OR UNIVERSITY
- HOSPITAL
- COAST GUARD STATION
- CHURCH
- CHURCH WITH CEMETERY
- CEMETERY
- PUBLIC STATION
- CORRECTION OR PENAL INSTITUTION
- QUARRY
- MINE OR PIT
- HIGHWAY GARAGE OR MAINT. YARD
- BOATWAY DIV. OR DIST. OFFICE
- MILITARY POST
- STADIUM
- FARMGROUNDS
- HISTORICAL SITE
- POST OFFICE
- STATE FOREST
- LIGHTHOUSE
- MONUMENT
- MONUMENT GAP
- REST AREA
- TRUCK REST AREA
- RESTROOM TRUCK REST AREA
- AIRPORT
- MILITARY AIRPORT
- NATIONAL STATE FOREST BOUNDARY
- WILDLIFE REFUGE
- NATIONAL STATE PARK BOUNDARY
- STATE LANDS BOUNDARY
- STATE FOREST BOUNDARY
- MILITARY RESERVATION BOUNDARY
- INDIAN RESERVATION BOUNDARY



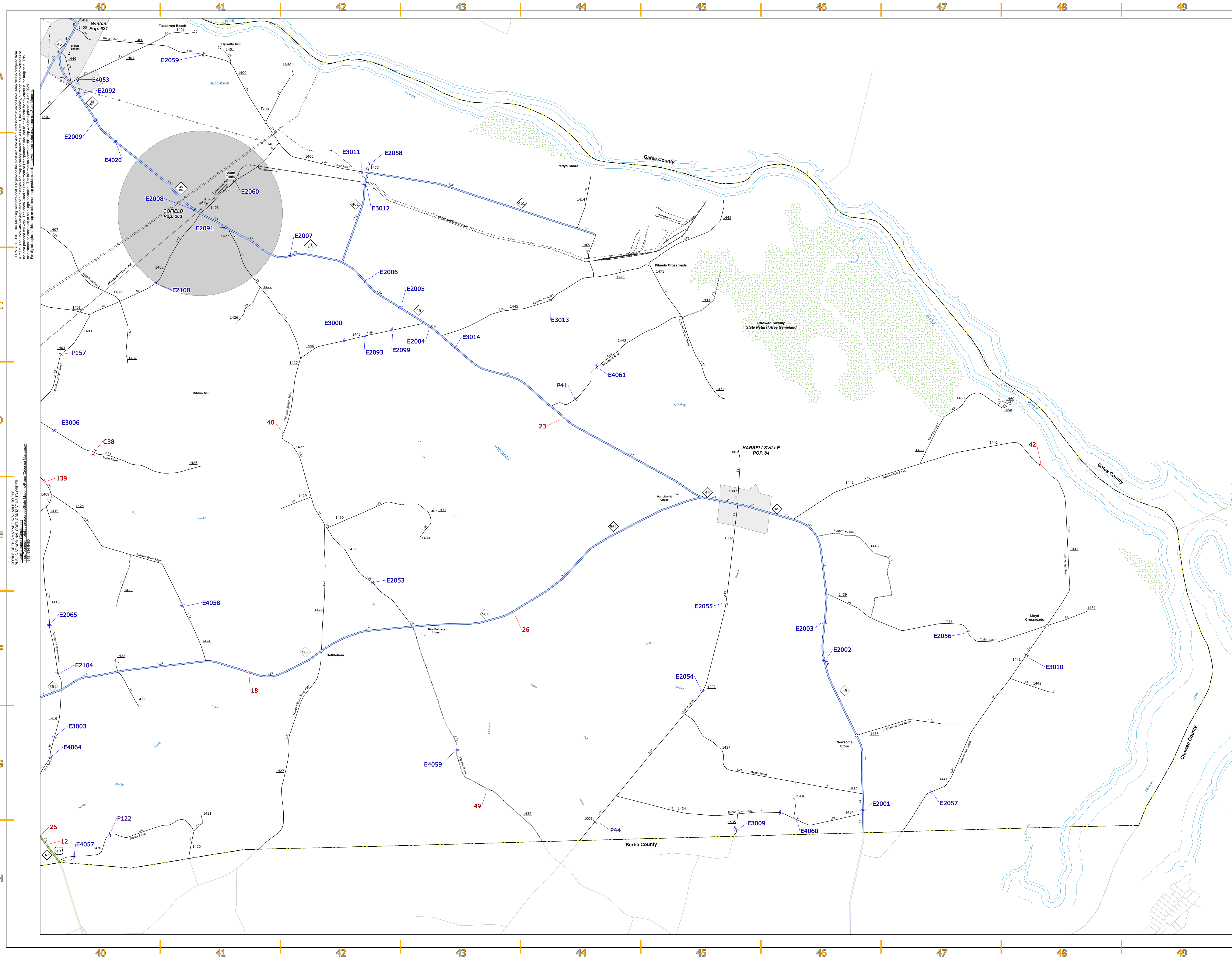
**HERTFORD COUNTY
NORTH CAROLINA
BRIDGE LOCATION MAP**

PREPARED BY THE
NORTH CAROLINA DEPARTMENT OF TRANSPORTATION
OPERATIONS PROGRAM MANAGEMENT UNIT - MAPPING SECTION
IN COOPERATION WITH THE
U.S. DEPARTMENT OF TRANSPORTATION
FEDERAL HIGHWAY ADMINISTRATION



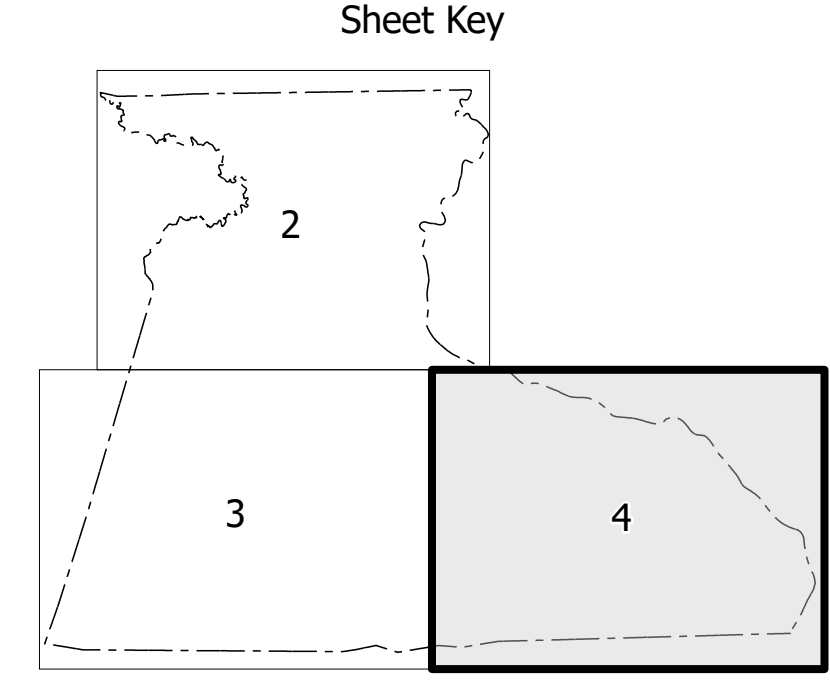
COPIES OF THIS MAP ARE AVAILABLE TO THE PUBLIC AT NOMINAL COST. CONTACT US TO ORDER: eservices@ncdot.gov or <https://connect.ncdot.gov/resources/State-Mapping/Pages/Ordering-Maps.aspx> (Pty 834-6467)

TERMS OF USE: The Mapping Section's goal is to provide the most accurate and current information possible. Map data is compiled from numerous sources with varying dates of publication and map accuracy standards. As a result, the accuracy, currency, and completeness of the data provided will vary. The North Carolina Department of Transportation shall not be held liable for any errors in the map data. This map cannot be construed to be a legal document. The information shown on this map was last updated in June 2024. For digital copies of this map or additional map products, visit <https://connect.ncdot.gov/resources/State-Mapping>.




TERMS OF USE: The Mapping Section's goal is to provide the most accurate and most information possible. Map data is collected from numerous sources with varying degrees of accuracy. As a result, the accuracy, reliability, and completeness of these data cannot be guaranteed. The information shown on this map was last updated in June 2024. For digital copies of this map or additional map products, visit <https://www.ncdot.gov/transportation/infrastructure/mapping>.

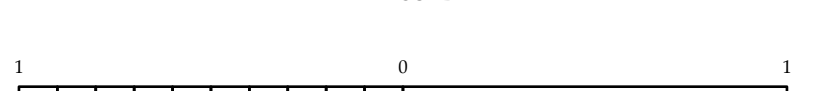
COPIES OF THIS MAP ARE AVAILABLE TO THE PUBLIC AT THE OFFICE OF THE STATE ARCHIVIST, 100 EAST COLLETT STREET, RALEIGH, NC 27603.



- LEGEND**
- INTERSTATE US NC Divided Hwy Undivided Hwy
 - BLUE RIDGE PARKWAY
 - UNPAVED SURFACED ROAD
 - ROAD SURFACED ROAD
 - NON-SYSTEM ROAD
 - PROFESSIONALLY DRAWN ROAD
 - PREDICTED LOCATION
 - INTERSECTION DISTANCE
 - INTERSTATE HIGHWAY
 - US NUMBERED HIGHWAY
 - NC NUMBERED HIGHWAY
 - US NUMBERED BICYCLE ROUTE
 - NC NUMBERED BICYCLE ROUTE
 - INTERSTATE INTERCHANGE NUMBER
 - SECONDARY ROAD NUMBER
 - UTILITY LINES
 - RAILROAD LINE
 - RAILROAD STATION
 - INSET AREA
 - STATE LINE
 - COUNTY LINE
 - SMOOTHED URBAN BOUNDARIES
 - CITY LIMITS
 - FERRY ROUTE AND RAMP
 - NARROW CREEK OR STREAM
 - WIDE RIVER OR CREEK
 - RESERVOIR, POND OR LAKE W/ ISLAND
 - DAM OR DAM WITH LOCK
 - WATERFALL
 - SWAMP
 - COMMUNITY
 - CITY SEAT
 - SCHOOL
 - COLLEGE OR UNIVERSITY
 - HOSPITAL
 - COAST GUARD STATION
 - CHURCH
 - CREEK WITH CEMETERY
 - CEMETERY
 - POLICE STATION
 - CORRECTION OR PENAL INSTITUTION
 - QUARRY
 - MENS OR WID
 - HIGHWAY GARAGE OR MAINT. YARD
 - HIGHWAY DIV. OR DIST. OFFICE
 - MILITARY POST
 - WEIGH STATION
 - FABRIQUONDS
 - HISTORICAL SITE
 - POINTS OF INTEREST
 - POST OFFICE
 - STATE FOREST
 - LIGHTHOUSE
 - SOFT STAIN SUMMIT
 - MOUNTAIN GAP
 - OVERLOOK
 - REST AREA
 - VISITOR CTR REST AREA
 - WELCOME CTR REST AREA
 - AIRPORT
 - MILITARY AIRPORT
 - NATIONAL STATE FOREST BOUNDARY
 - WILDLIFE REFUGE
 - NATIONAL STATE PARK BOUNDARY
 - GAME LANDS BOUNDARY
 - MILITARY RESERVATION BOUNDARY
 - INDIAN RESERVATION BOUNDARY


HERTFORD COUNTY
NORTH CAROLINA
BRIDGE LOCATION MAP
 PREPARED BY THE
 NORTH CAROLINA DEPARTMENT OF TRANSPORTATION
 OPERATIONS PROGRAM MANAGEMENT UNIT - MAPPING SECTION
 IN COOPERATION WITH THE
 U.S. DEPARTMENT OF TRANSPORTATION
 FEDERAL HIGHWAY ADMINISTRATION

SCALE



NORTH CAROLINA PLANE COORDINATE SYSTEM
 LAMBERT CONFORMAL CONIC PROJECTION

SHEET 4 of 4