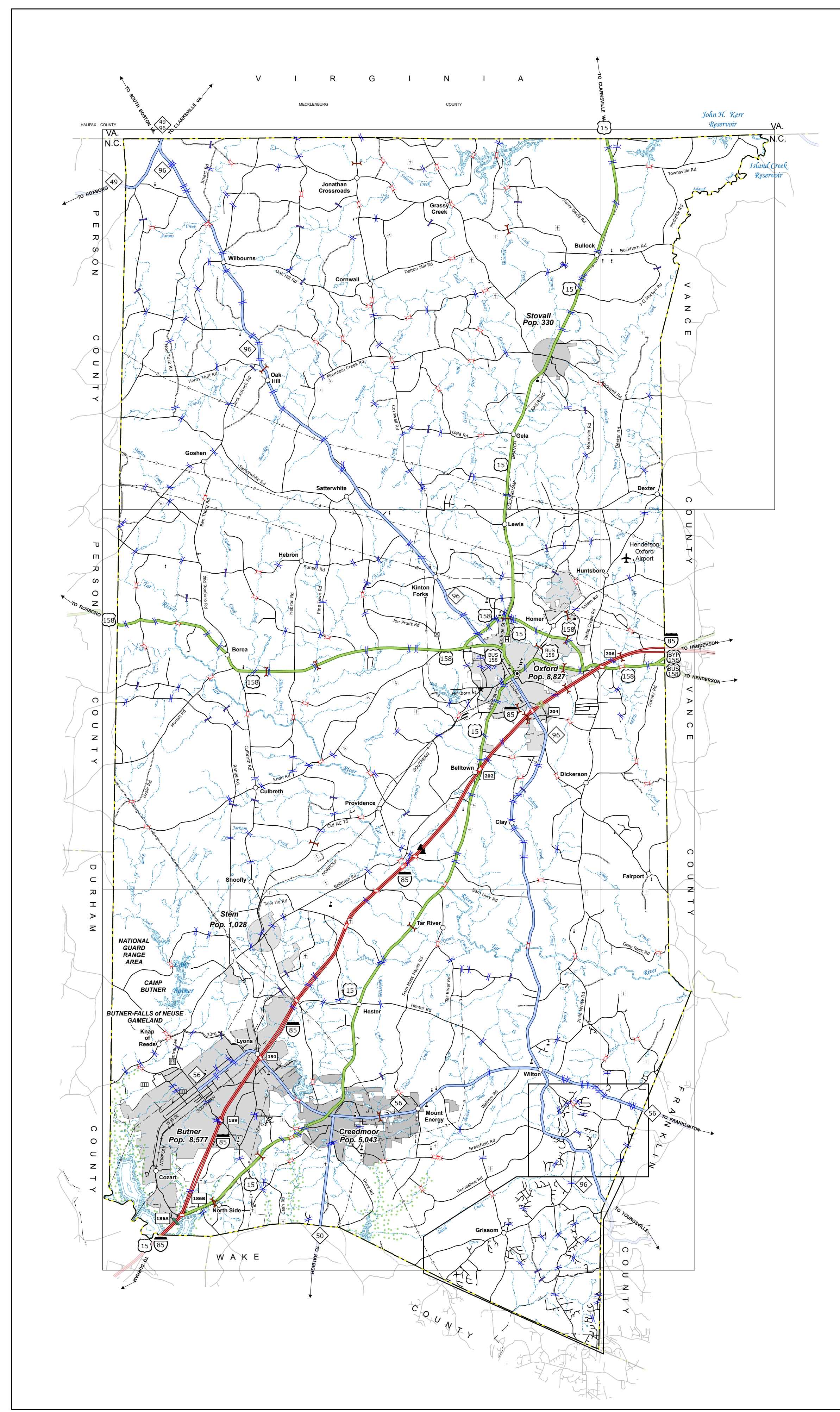
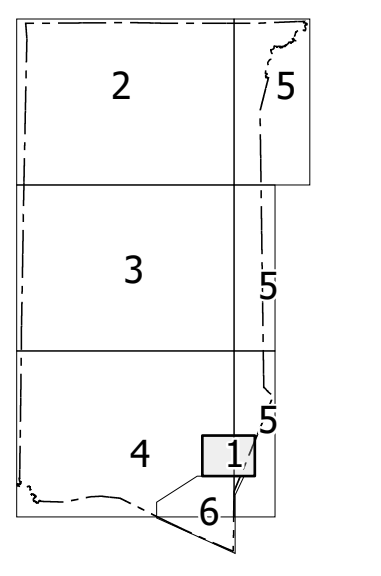


COPIES OF THIS MAP ARE AVAILABLE TO THE PUBLIC AT NOMINAL COST. CONTACT US TO ORDER: maps@ncdot.gov (919) 834-5480

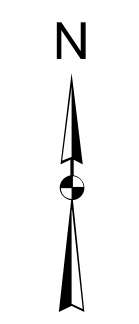
TERMS OF USE: The Mapping Section's goal is to provide the most accurate and current information possible. Map data is compiled from numerous sources with varying dates of publication and map accuracy standards. As a result, the accuracy, currency, and completeness of the data provided will vary. The North Carolina Department of Transportation shall not be held liable for any errors in the map data. This map cannot be construed to be a legal document. The information shown on this map was last updated in July 2024. For digital copies of this map or additional map products, visit <https://connect.ncdot.gov/resources/State-Mapping>

Sheet Key



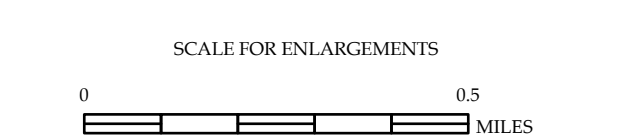
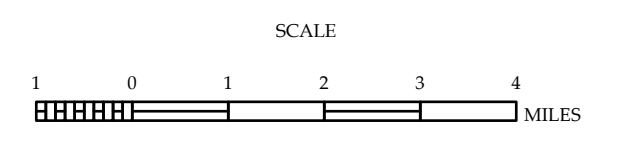
LEGEND

INTERSTATE US	DISCOUNTED	BRIDGE
INTERSTATE NC	UNDISCOUNTED	CITY BRIDGE
BLUE RIDGE PARKWAY		CITY SIGN
UNIMPROVED SURFACE ROAD		CITY CULVERT
IMPROVED SURFACE ROAD		NC CULVERT
ROAD UNDER CONSTRUCTION		DRY LANE BRIDGE
PROPOSED ROAD		PEDESTRIAN BRIDGE
PROFESSIONAL DROWN ROAD		NON-NBMS PIPE
NON-SYSTEM ROAD		FEDERAL BRIDGE
PROJECTED LOCATION		NON-SYSTEM MAINT BY NCDOT
INTEREST-TWO-DISTANCE		CANTILEVER SIGN
INTERSTATE HIGHWAY		NC DOT OVERPASS STRUCTURE
U.S. NUMBERED HIGHWAY		CITY PIPE
U.S. NUMBERED BI-CYCLE ROUTE		PIPE
INTERSTATE BI-CYCLE NUMBER		RAILROAD BRIDGE
U.S. NUMBERED BI-CYCLE ROUTE		OVERHEAD SIGN
INTERSTATE BI-CYCLE NUMBER		TUNNEL
SECONDARY ROAD NUMBER		PEDESTRIAN UNDERPASS
UTILITY LINES		PEDESTRIAN WALKWAY
RAILROAD LINE		
RAILROAD STATION		
INLET AREA		
STATE LINE		
COUNTY LINE		
SMOOTHED URBAN BOUNDARIES		
CITY LIMITS		
RAILROAD BRIDGE AND RAMP		
NARROW CREEK OR STREAM		
WIDE DEEP CREEK OR STREAM		
RECREATION POND OR LAKE W/ ISLAND		
DAM OR DAM WITH LACK WATERFALL		
SWAMP		
COMMUNITY		
COUNTY SEAT		
SCHOOL		
COLLEGE OR UNIVERSITY		
HOSPITAL		
CONVENT GUARD STATION		
CHURCH		
CHURCH WITH CEMETERY		
CEMETERY		
PUBLIC STATION		
CONSTRUCTION OR PENAL INSTITUTION		
QUARRY		
MINE OR PIT		
HIGHWAY GARAGE OR MAINT YARD		
HIGHWAY IN OR REST SERVICE		
MILITARY POST		
WATER TOWER		
FARMS		
HISTORICAL SITE		
POINTS OF INTEREST		
POST OFFICE		
STATE FOREST		
LIGHTHOUSE		
MOUNTAIN SUMMIT		
MOUNTAIN GAP		
OVERLOOK		
REST AREA		
VISITOR CENTER REST AREA		
WELCOME CENTER REST AREA		
AIRPORT		
MILITARY AIRPORT		
NATIONAL STATE FOREST BOUNDARY		
WILDLIFE REFUGE		
NATIONAL STATE PARK BOUNDARY		
GAME LANDS BOUNDARY		
MILITARY RESERVATION BOUNDARY		
INDIAN RESERVATION BOUNDARY		



GRANVILLE COUNTY NORTH CAROLINA BRIDGE LOCATION MAP

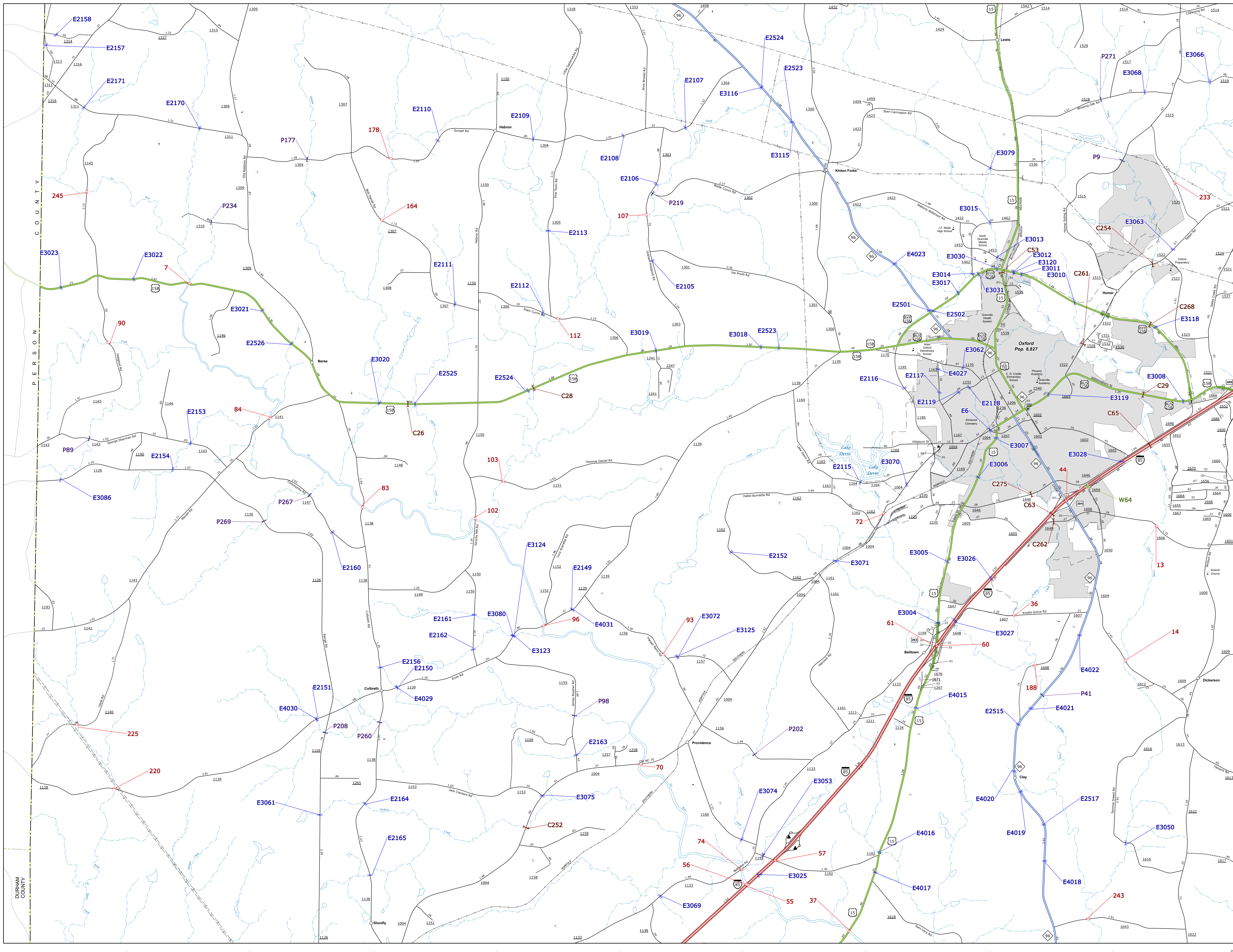
PREPARED BY THE
NORTH CAROLINA DEPARTMENT OF TRANSPORTATION
OPERATIONS PROGRAM MANAGEMENT UNIT - MAPPING SECTION
IN COOPERATION WITH THE
U.S. DEPARTMENT OF TRANSPORTATION
FEDERAL HIGHWAY ADMINISTRATION

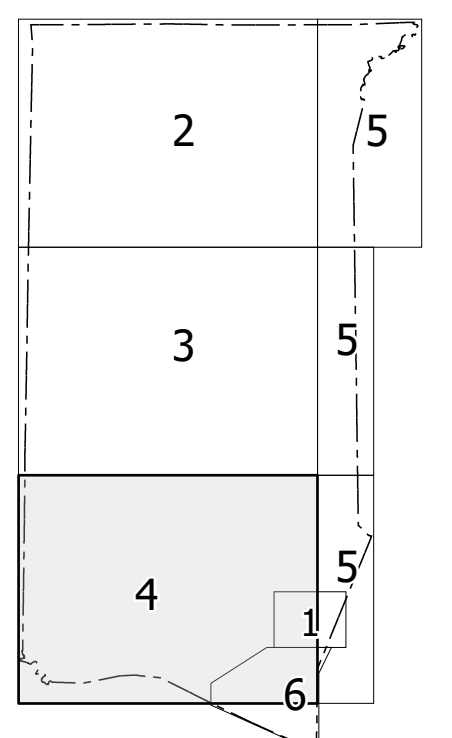


NORTH CAROLINA PLANE COORDINATE SYSTEM
LAMBERT CONFORMAL CONIC PROJECTION

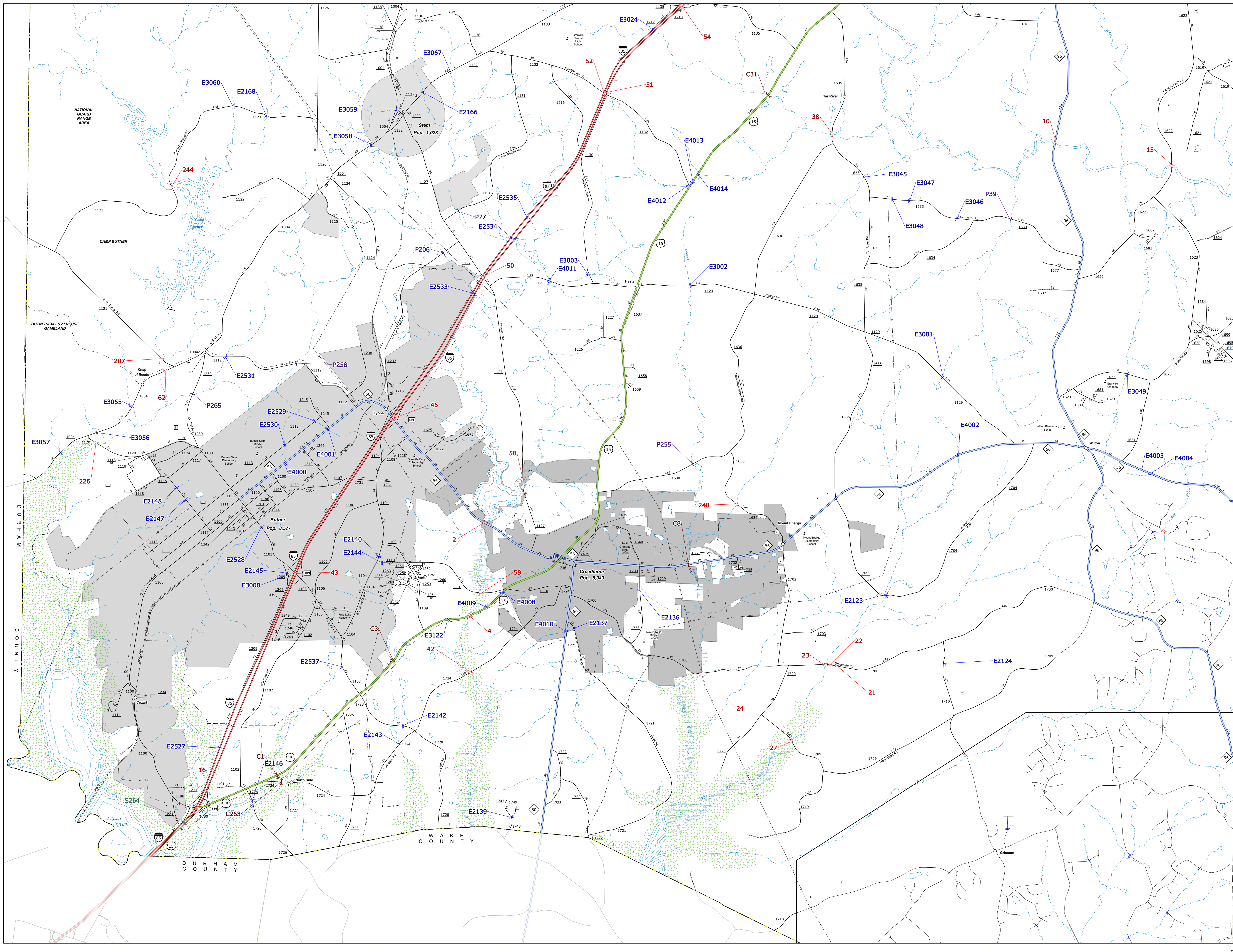
TERMS OF USE: The Mapper's goal is to provide the most accurate and current information available. Map data is compiled from numerous sources with varying degrees of accuracy and timeliness. While every effort is made to ensure accuracy, the user assumes all responsibility for any errors or omissions. This information is provided for informational purposes only. The information shown on this map was updated in 2024. For more information, please contact the Mapper's Office at 919.748.7000.

COPIES OF THIS MAP ARE AVAILABLE TO THE PUBLIC AT NO CHARGE. CONTACT US TO ORDER: 919.748.7000 OR VISIT OUR WEBSITE: www.ncdot.gov

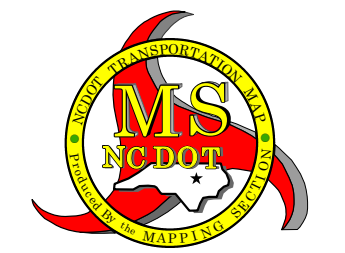
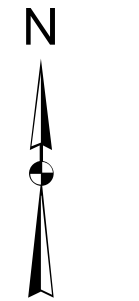




TERMS OF USE: The MapInfo Desktop Viewer is provided to the user for informational purposes only. It is not intended for use in any legal proceeding or for any other purpose. The user agrees to indemnify and hold the provider harmless from any and all claims, damages, and expenses, including reasonable attorneys' fees, that may be asserted against or incurred by the provider in connection with the use of the software. The information shown on this map was updated in July 2024. For a complete list of map data sources, please refer to the metadata file: \\gis01\gis\maps\mxd\GranvilleCounty\GranvilleCounty_Bridges.mxd

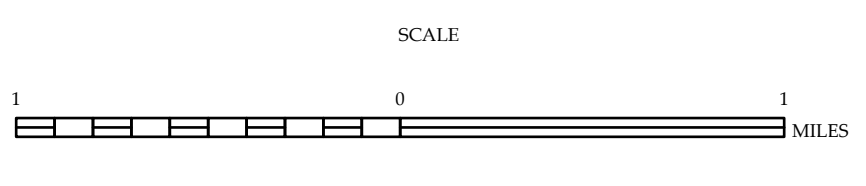


- LEGEND**
- INTERSTATE US NC Divided Hwy Undivided Hwy
 - BLUE RIDGE PARKWAY
 - CONCRETE REINFORCED ROAD
 - HARD SURFACED ROAD
 - NON-SYSTEM ROAD
 - PROVISIONALLY BROWN ROAD
 - PROTECTED LOCATION
 - INTERSECTION DISTANCE
 - INTERSTATE HIGHWAY
 - U.S. NUMBERED HIGHWAY
 - N.C. NUMBERED HIGHWAY
 - U.S. NUMBERED BICYCLE ROUTE
 - N.C. NUMBERED BICYCLE ROUTE
 - INTERSTATE INTERCHANGE NUMBER
 - SECONDARY ROAD NUMBER
 - RAILROAD LINE
 - RAILROAD STATION
 - STATE LINE
 - COUNTY LINE
 - SMOOTHED URBAN BOUNDARIES
 - CITY LIMITS
 - FERRY ROUTE AND RAMP
 - NARROW CREEK OR STREAM
 - WIDE RIVER OR CREEK
 - RESERVOIR, POND OR LAKE W/ ISLAND
 - DAM OR DAM WITH LOCK
 - WATERFALL
 - SWAMP
 - COMMUNITY
 - COUNTY SEAT
 - SCHOOL
 - COLLEGE OR UNIVERSITY
 - HOSPITAL
 - CHURCH
 - CHURCH WITH CEMETERY
 - CEMETERY
 - PRISON
 - CORRECTION OR PENAL INSTITUTION
 - QUARRY
 - MINE OR PIT
 - HIGHWAY GARAGE OR MAINT. YARD
 - HIGHWAY DIV. OR DIST. OFFICE
 - MILITARY POST
 - WEIGH STATION
 - FARMHOUSES
 - HISTORICAL SITE
 - POINTS OF INTEREST
 - POST OFFICE
 - STATE FOREST
 - LIGHTHOUSE
 - MOUNTAIN SUMMIT
 - MOUNTAIN GAP
 - OVERLOOK
 - REST AREA
 - VISITOR CENTER AREA
 - WELCOME CENTER AREA
 - AIRPORT
 - MILITARY AIRPORT
 - NATIONAL / STATE FOREST BOUNDARY
 - WILDLIFE REFUGE
 - NATIONAL / STATE PARK BOUNDARY
 - GAME LANDS BOUNDARY
 - MILITARY RESERVATION BOUNDARY
 - INDIAN RESERVATION BOUNDARY
 - BRIDGE
 - CITY BRIDGE
 - CITY CULVERT
 - CITY CULVERT
 - DEAN BRIDGE
 - FEDERAL BRIDGE
 - FERRY RAMP
 - CASTLEVER BRIDGE
 - NON-SYSTEM MAINT BY NCDOT
 - PRIVATE STRUCTURE
 - SCOOT OVERPASS STRUCTURE
 - OVERHEAD BRIDGE
 - TUNNEL
 - VEHICULAR UNDERPASS
 - PEDESTRIAN WALKWAY
 - SINGLE BRIDGE

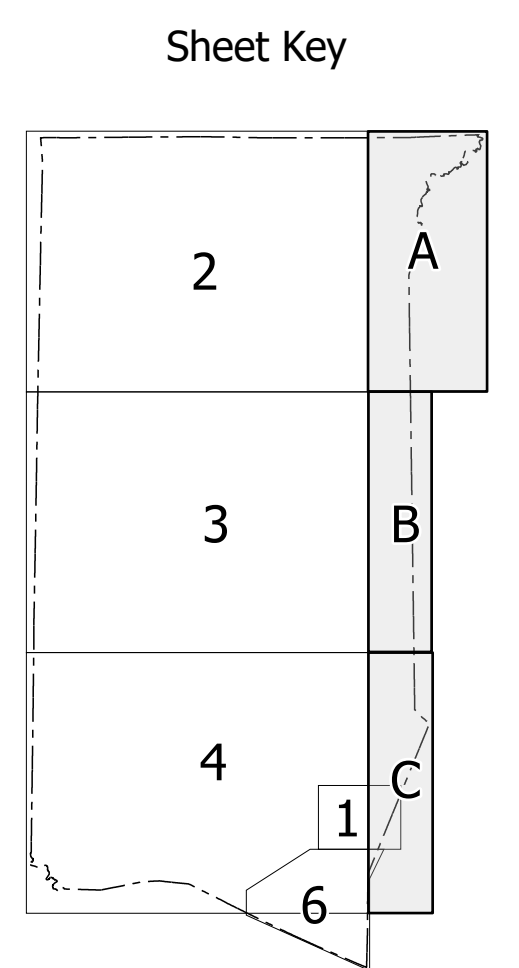
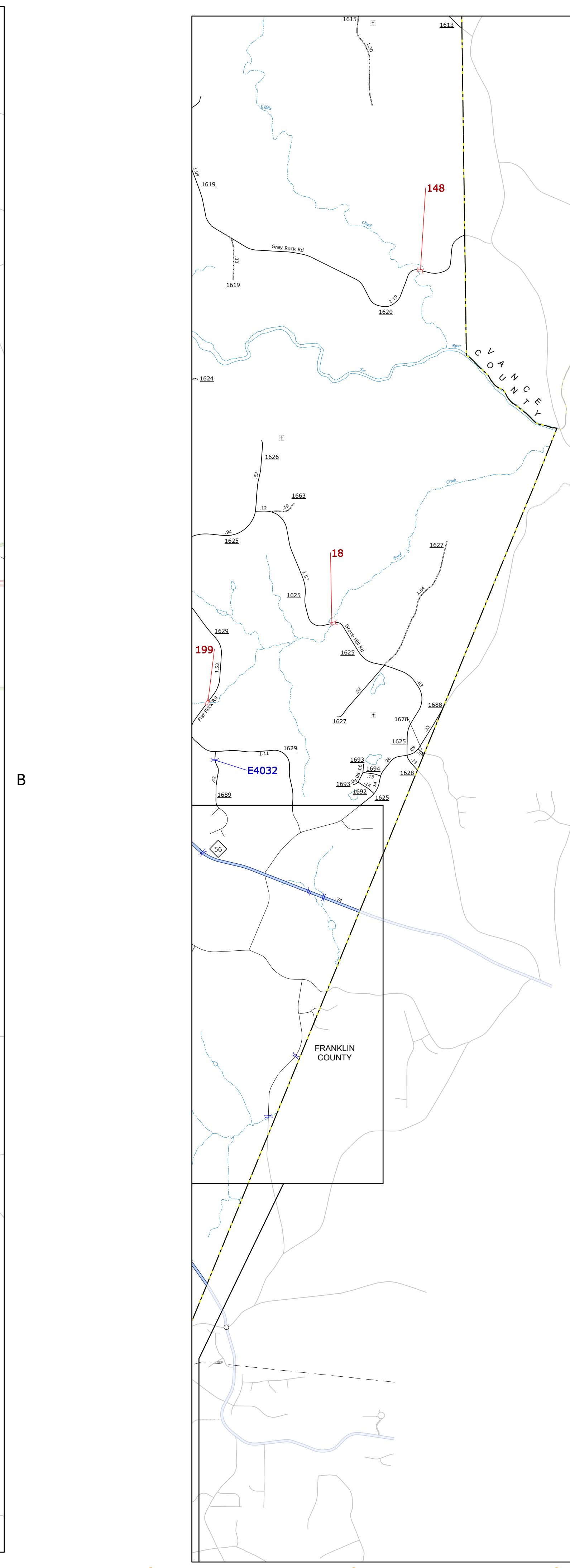
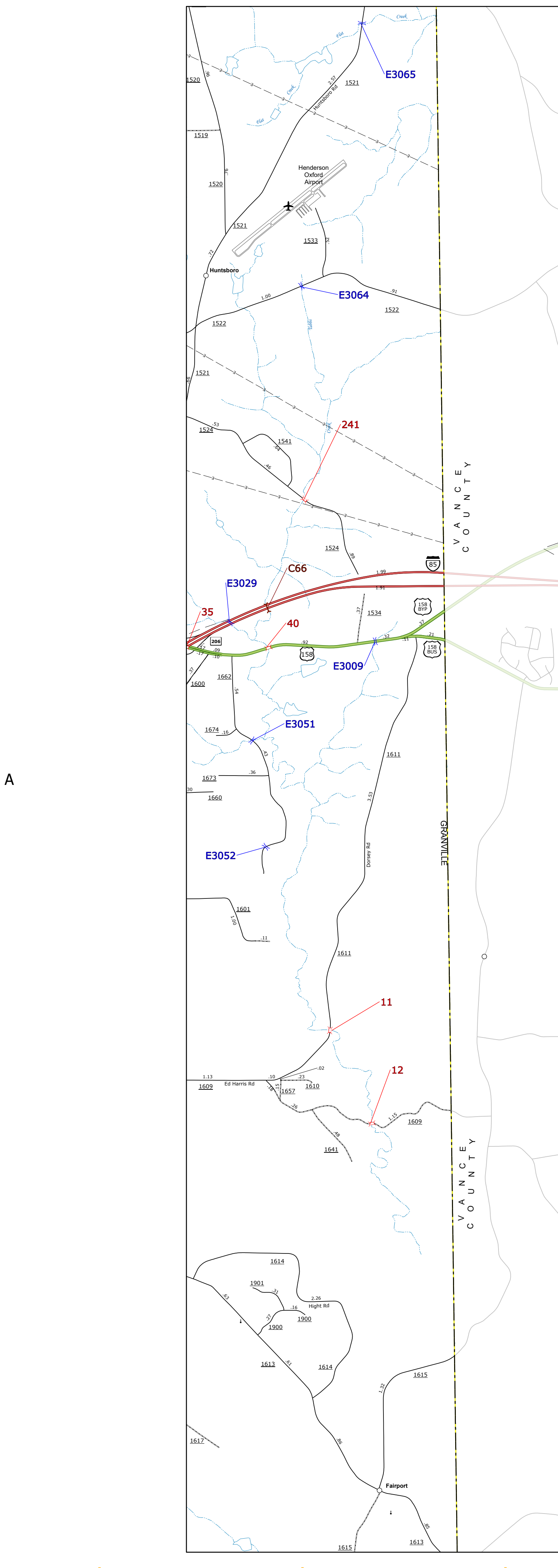
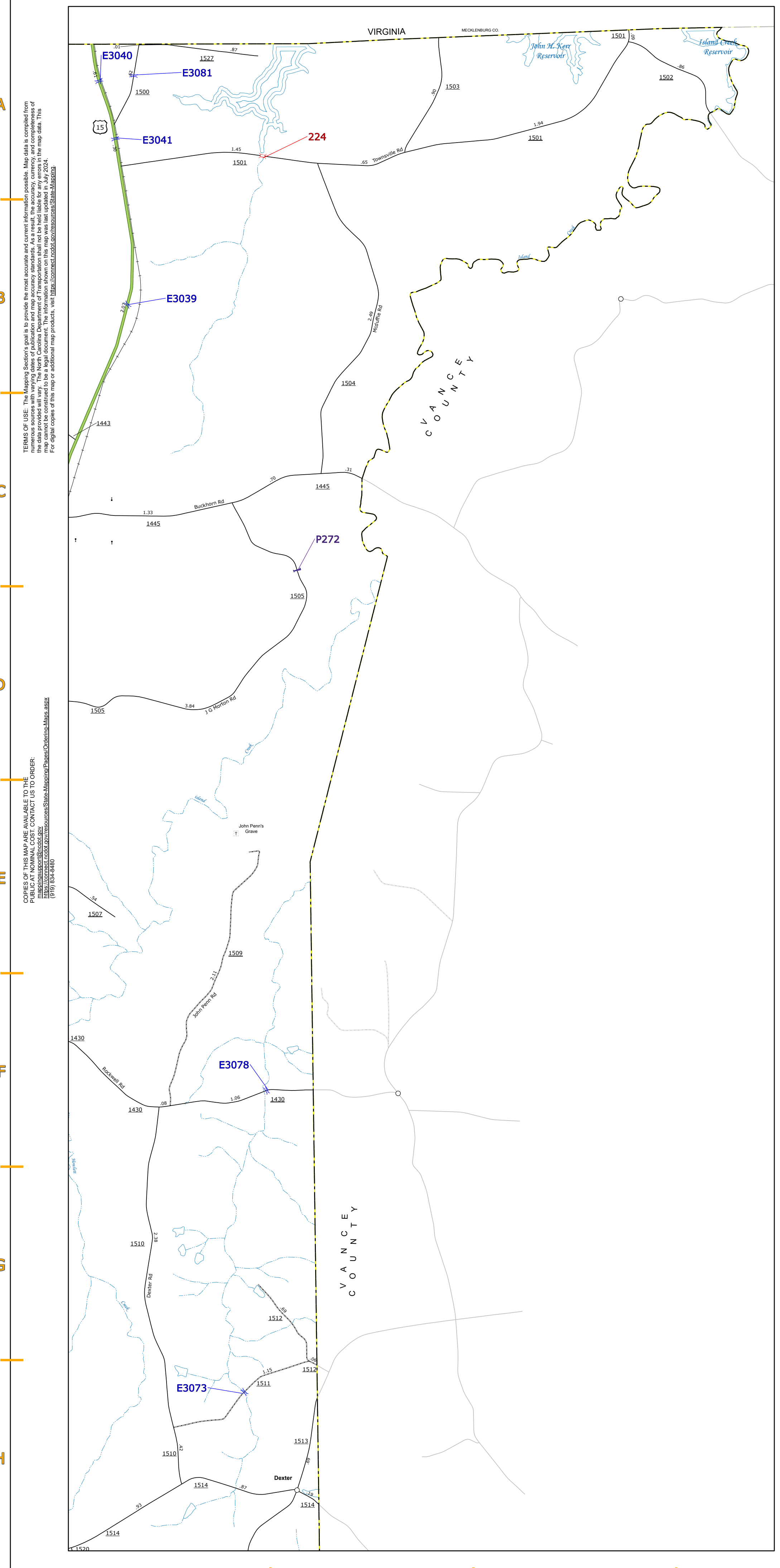


GRANVILLE COUNTY NORTH CAROLINA BRIDGE LOCATION MAP

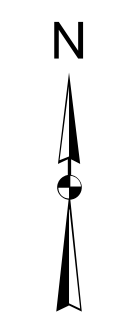
PREPARED BY THE
NORTH CAROLINA DEPARTMENT OF TRANSPORTATION
OPERATIONS PROGRAM MANAGEMENT UNIT - MAPPING SECTION
IN COOPERATION WITH THE
U.S. DEPARTMENT OF TRANSPORTATION
FEDERAL HIGHWAY ADMINISTRATION



NORTH CAROLINA PLANE COORDINATE SYSTEM
LAMBERT CONFORMAL CONIC PROJECTION



- LEGEND**
- INTERSTATE US NC Divided Hwy Undivided Hwy
 - BLUE RIDGE PARKWAY
 - UNPAVED SURFACED ROAD
 - ROAD SURFACE ROAD
 - MOX-SYSTEM ROAD
 - PROVISIONALLY OPEN ROAD
 - PROTECTED LOCATION
 - INTERSECTION DISTANCE
 - INTERSTATE HIGHWAY
 - U.S. NUMBERED HIGHWAY
 - U.S. NUMBERED BI-CYCLE ROUTE
 - N.C. NUMBERED BI-CYCLE ROUTE
 - INTERSTATE INTERCHANGE NUMBER
 - SECONDARY ROAD NUMBER
 - RAILROAD LINE
 - RAILROAD STATION
 - INLET AREA
 - STATE LINE
 - COUNTY LINE
 - SMOOTHED URBAN BOUNDARIES
 - CITY LIMITS
 - FERRY RAMP AND RAMP
 - NARROW CREEK OR STREAM
 - WIDE RIVER OR CREEK
 - RESERVOIR, POND OR LAKE W/ ISLAND
 - DAM OR DAM WITH LOCK
 - NATURAL SWAMP
 - COMMUNITY
 - COUNTY SEAT
 - SCHOOL
 - COLLEGE OR UNIVERSITY
 - HOSPITAL
 - CONST. GRADE STATION
 - CHEMICAL
 - CHEMICAL WITH CEMETERY
 - CHEMISTRY
 - PUBLIC STATION
 - CORRECTION OR PENAL INSTITUTION
 - SECURITY
 - MINE OR PIT
 - ROADWAY GARAGE OR MAINT. YARD
 - ROADWAY DEP. OR DIST. OFFICE
 - MILITARY POST
 - WEIGH STATION
 - LABORER
 - HISTORICAL SITE
 - POINTS OF INTEREST
 - POST OFFICE
 - STATE FOREST
 - LIGHTHOUSE
 - MOUNTAIN SUMMIT
 - MOUNTAIN GAP
 - OVERLOOK
 - REST AREA
 - UNDEVELOPED REST AREA
 - WELCOME CENTER AREA
 - BARBICUE
 - MILITARY AIRPORT
 - NATIONAL STATE FOREST BOUNDARY
 - WILDLIFE REFUGE
 - NATIONAL STATE PARK BOUNDARY
 - GAME LAND BOUNDARY
 - MILITARY RESERVATION BOUNDARY
 - INDIAN RESERVATION BOUNDARY
 - BRIDGE
 - CITY BRIDGE
 - CITY SIGN
 - CITY CULVERT
 - CITY CULVERT
 - TRUSS BRIDGE
 - PIERCE STRAIN BRIDGE
 - NON-SYSTEM PIPE
 - FERRY RAMP
 - FEDERAL BRIDGE
 - NON-SYSTEM BUILT BY NC DOT
 - CANTILEVER SIGN
 - PRIVATE STRUCTURE
 - NC DOT OVERPASS STRUCTURE
 - PAYMENT ON PILES
 - CITY PIPE
 - TRUSS BRIDGE
 - OVERHEAD SIGN
 - PIPE
 - TRUSS BRIDGE
 - FEDERAL UNDERPASS
 - VEHICULAR UNDERPASS
 - FEDERAL WALKWAY
 - TRUSS SIGN



**GRANVILLE COUNTY
NORTH CAROLINA
BRIDGE LOCATION MAP**

PREPARED BY THE
NORTH CAROLINA DEPARTMENT OF TRANSPORTATION
OPERATIONS PROGRAM MANAGEMENT UNIT - MAPPING SECTION
IN COOPERATION WITH THE
U.S. DEPARTMENT OF TRANSPORTATION
FEDERAL HIGHWAY ADMINISTRATION

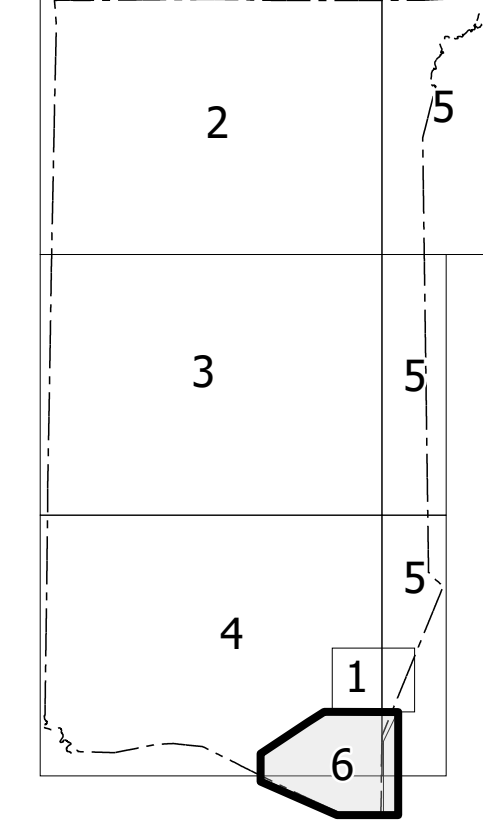
SCALE

NORTH CAROLINA PLANE COORDINATE SYSTEM
LAMBERT CONFORMAL CONIC PROJECTION

TERMS OF USE: The Mapping Section's goal is to provide the most accurate and current information possible. Map data is compiled from numerous sources with varying degrees of accuracy and timeliness. While every effort is made to ensure the accuracy, currency, and completeness of map content, the user should be aware that the information shown on this map was last updated in July 2024. No responsibility is assumed for any errors or omissions on this map. For more information, visit <https://www.ncdot.gov/transportation/mapping>.

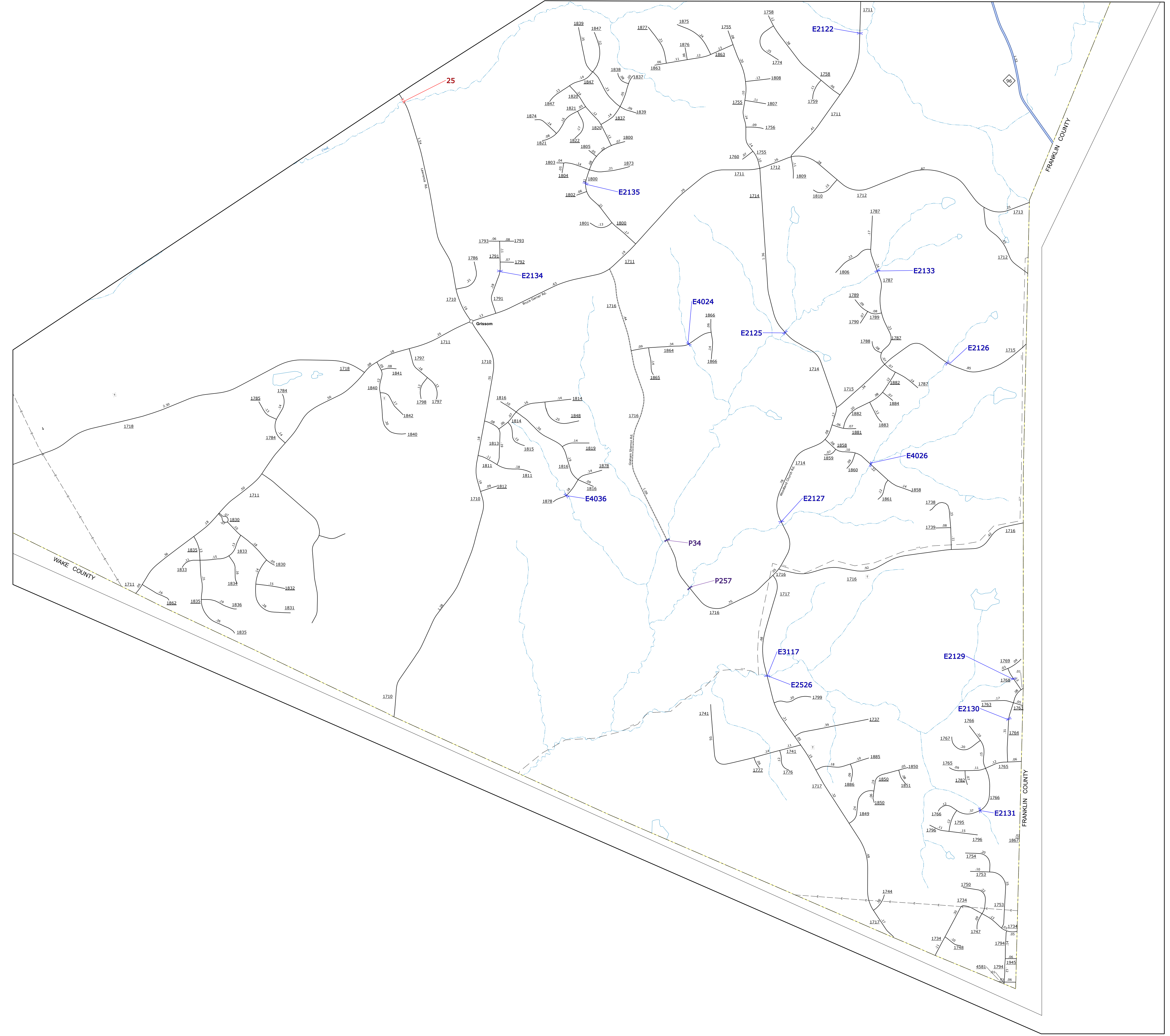
COPIES OF THIS MAP ARE AVAILABLE TO THE PUBLIC AT NOMINAL COST. CONTACT US TO ORDER: maps@ncdot.gov or (919) 872-4444.

Sheet Key

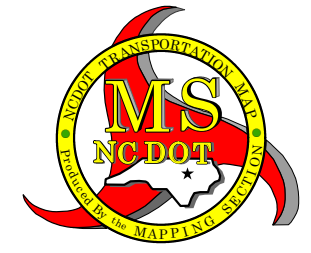
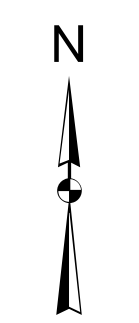


TERMS OF USE: The Mapping Section's goal is to provide the most accurate and current information available. Map data is compiled from numerous sources with varying degrees of accuracy and scale. The accuracy, currency, and completeness of the information shown on this map cannot be guaranteed. This information shown on this map was last updated in July 2024.

COPIES OF THIS MAP ARE AVAILABLE TO THE PUBLIC AT NO CHARGE. CONTACT US TO ORDER: mapinfo@ncdot.gov OR 1-800-388-3353

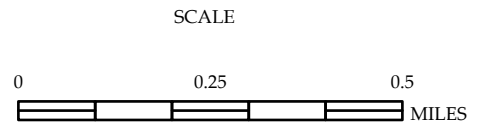


- LEGEND**
- | | | | | | |
|--|----|----|------------------|---------------|-------------|
| INTERSTATE | ES | NC | Divided Hwy | UNDIVIDED HWY | BRIDGE |
| STATE ROUTE | | | Divided Hwy | UNDIVIDED HWY | CITY BRIDGE |
| MAJOR ROAD | | | Divided Hwy | UNDIVIDED HWY | CITY BRIDGE |
| MINOR ROAD | | | Divided Hwy | UNDIVIDED HWY | CITY BRIDGE |
| PROVISIONALLY DRAWN ROAD | | | Divided Hwy | UNDIVIDED HWY | CITY BRIDGE |
| PROVISIONALLY DRAWN ROAD | | | Divided Hwy | UNDIVIDED HWY | CITY BRIDGE |
| INTERSECTION DISTANCE | | | Divided Hwy | UNDIVIDED HWY | CITY BRIDGE |
| INTERSTATE HIGHWAY | | | Divided Hwy | UNDIVIDED HWY | CITY BRIDGE |
| U.S. NUMBERED HIGHWAY | | | Divided Hwy | UNDIVIDED HWY | CITY BRIDGE |
| U.S. NUMBERED BIWAY | | | Divided Hwy | UNDIVIDED HWY | CITY BRIDGE |
| U.S. NUMBERED BIWAY ROUTE | | | Divided Hwy | UNDIVIDED HWY | CITY BRIDGE |
| INTERSTATE INTERCHANGE NUMBER | | | Divided Hwy | UNDIVIDED HWY | CITY BRIDGE |
| SECONDARY ROAD NUMBER | | | Divided Hwy | UNDIVIDED HWY | CITY BRIDGE |
| STREET LANE | | | Divided Hwy | UNDIVIDED HWY | CITY BRIDGE |
| RAILROAD LINE | | | Divided Hwy | UNDIVIDED HWY | CITY BRIDGE |
| RAILROAD TUNNEL | | | Divided Hwy | UNDIVIDED HWY | CITY BRIDGE |
| INLET AREA | | | Divided Hwy | UNDIVIDED HWY | CITY BRIDGE |
| STATE LINE | | | Divided Hwy | UNDIVIDED HWY | CITY BRIDGE |
| COUNTY LINE | | | Divided Hwy | UNDIVIDED HWY | CITY BRIDGE |
| SHOWBOTH URBAN BOUNDARIES | | | Divided Hwy | UNDIVIDED HWY | CITY BRIDGE |
| CITY BOUNDARY | | | Divided Hwy | UNDIVIDED HWY | CITY BRIDGE |
| FERRY ROUTE AND RAMP | | | Divided Hwy | UNDIVIDED HWY | CITY BRIDGE |
| NARROW CREEK OR STREAM | | | Divided Hwy | UNDIVIDED HWY | CITY BRIDGE |
| WIDE CREEK OR STREAM | | | Divided Hwy | UNDIVIDED HWY | CITY BRIDGE |
| RESERVOIR, POND OR LAKE W/ ISLAND | | | Divided Hwy | UNDIVIDED HWY | CITY BRIDGE |
| DAM OR DAM WITH LOCK | | | Divided Hwy | UNDIVIDED HWY | CITY BRIDGE |
| WATERFALL | | | Divided Hwy | UNDIVIDED HWY | CITY BRIDGE |
| SWAMP | | | Divided Hwy | UNDIVIDED HWY | CITY BRIDGE |
| COUNTY SEAT | | | Divided Hwy | UNDIVIDED HWY | CITY BRIDGE |
| CITY SEAT | | | Divided Hwy | UNDIVIDED HWY | CITY BRIDGE |
| COLLEGE OR UNIVERSITY | | | Divided Hwy | UNDIVIDED HWY | CITY BRIDGE |
| HOSPITAL | | | Divided Hwy | UNDIVIDED HWY | CITY BRIDGE |
| COAST GUARD STATION | | | Divided Hwy | UNDIVIDED HWY | CITY BRIDGE |
| CHURCH | | | Divided Hwy | UNDIVIDED HWY | CITY BRIDGE |
| CHEMIST WITH CEMETERY | | | Divided Hwy | UNDIVIDED HWY | CITY BRIDGE |
| CHEMIST | | | Divided Hwy | UNDIVIDED HWY | CITY BRIDGE |
| PUBLIC STATION | | | Divided Hwy | UNDIVIDED HWY | CITY BRIDGE |
| CORRECTION OR PENAL INSTITUTION | | | Divided Hwy | UNDIVIDED HWY | CITY BRIDGE |
| QUARRY | | | Divided Hwy | UNDIVIDED HWY | CITY BRIDGE |
| MINE OR PIT | | | Divided Hwy | UNDIVIDED HWY | CITY BRIDGE |
| INDUSTRIAL CANAL OR WASTEWATER TREATMENT PLANT | | | Divided Hwy | UNDIVIDED HWY | CITY BRIDGE |
| MILITARY POST | | | Divided Hwy | UNDIVIDED HWY | CITY BRIDGE |
| MILITARY STATION | | | Divided Hwy | UNDIVIDED HWY | CITY BRIDGE |
| PARK | | | Divided Hwy | UNDIVIDED HWY | CITY BRIDGE |
| PARKLANDS | | | Divided Hwy | UNDIVIDED HWY | CITY BRIDGE |
| INDUSTRIAL SITE | | | Divided Hwy | UNDIVIDED HWY | CITY BRIDGE |
| POINTS OF INTEREST | | | Divided Hwy | UNDIVIDED HWY | CITY BRIDGE |
| STATE FOREST | | | Divided Hwy | UNDIVIDED HWY | CITY BRIDGE |
| LIGHTHOUSE | | | Divided Hwy | UNDIVIDED HWY | CITY BRIDGE |
| MOUNTAIN SUMMIT | | | Divided Hwy | UNDIVIDED HWY | CITY BRIDGE |
| MOUNTAIN GAP | | | Divided Hwy | UNDIVIDED HWY | CITY BRIDGE |
| OVERLOOK | | | Divided Hwy | UNDIVIDED HWY | CITY BRIDGE |
| REST AREA | | | Divided Hwy | UNDIVIDED HWY | CITY BRIDGE |
| UNIFORM TR REST AREA | | | Divided Hwy | UNDIVIDED HWY | CITY BRIDGE |
| WELCOME TR REST AREA | | | Divided Hwy </tr | | |



**GRANVILLE COUNTY
NORTH CAROLINA
BRIDGE LOCATION MAP**

PREPARED BY THE
NORTH CAROLINA DEPARTMENT OF TRANSPORTATION
OPERATIONS PROGRAM MANAGEMENT UNIT - MAPPING SECTION
IN COOPERATION WITH THE
U.S. DEPARTMENT OF TRANSPORTATION
FEDERAL HIGHWAY ADMINISTRATION



NORTH CAROLINA PLANE COORDINATE SYSTEM
LAMBERT CONFORMAL CONIC PROJECTION