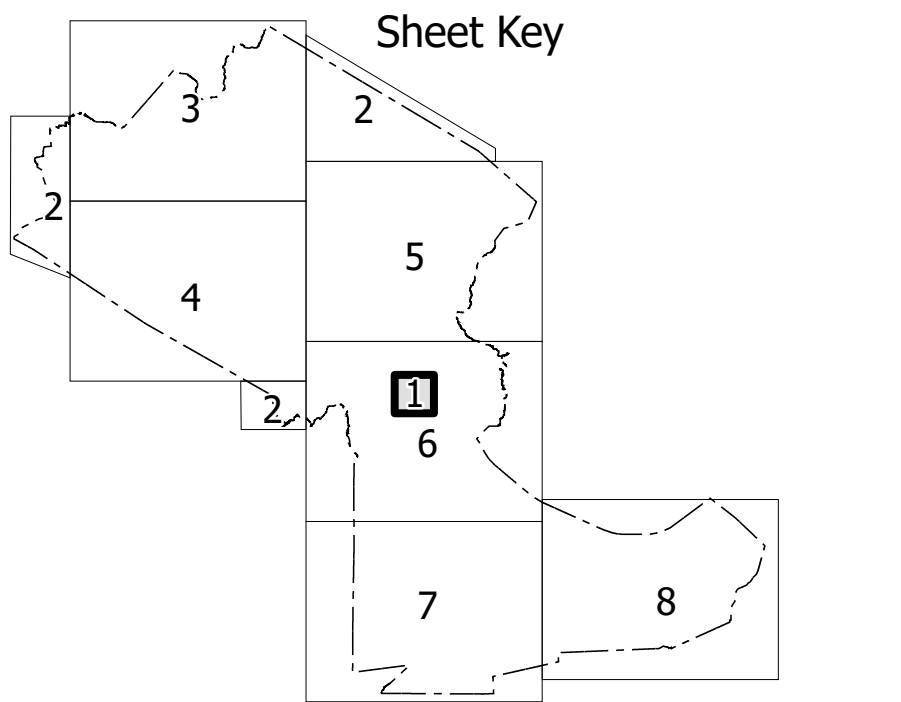


COPIES OF THIS MAP ARE AVAILABLE TO THE PUBLIC AT NOMINAL COST. CONTACT US TO ORDER:
mapinfo@support.mde.state.md.gov
<https://connect.mdot.gov/resources/State-Mapping/Pages/Ordering-Maps.aspx>
 (919) 834-8480



**CRAVEN COUNTY
NORTH CAROLINA
BRIDGE LOCATION MAP**

PREPARED BY THE
NORTH CAROLINA DEPARTMENT OF TRANSPORTATION
OPERATIONS PROGRAM MANAGEMENT UNIT - SURVEY SECTION
IN COOPERATION WITH THE
U.S. DEPARTMENT OF TRANSPORTATION
FEDERAL HIGHWAY ADMINISTRATION

SCALE

0 1 2 3 4
MILES

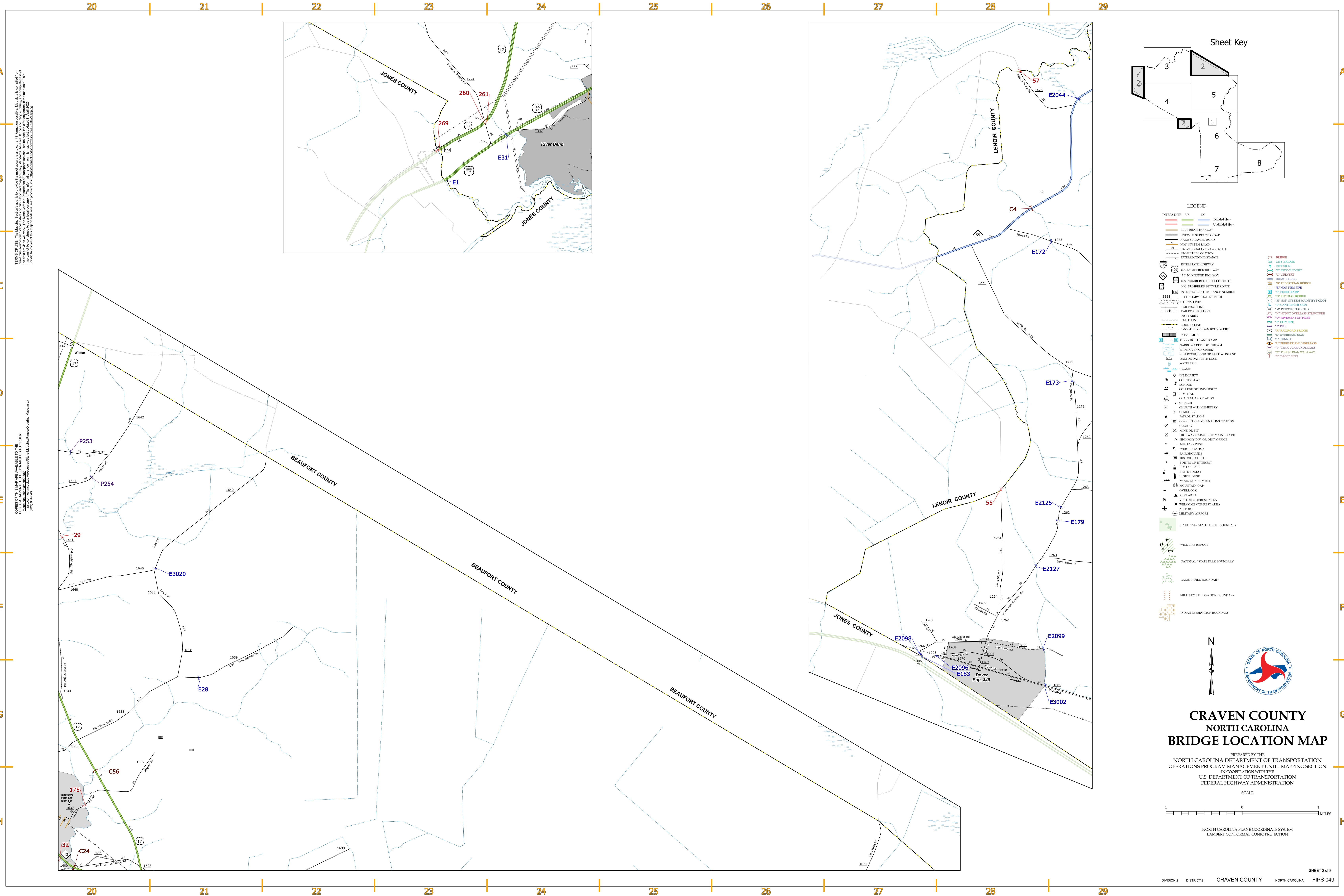
SCALE FOR ENLARGEMENTS

0 1
MILES

NORTH CAROLINA PLANE COORDINATE SYSTEM
LAMBERT CONFORMAL CONIC PROJECTION

SHEET 1 OF 8
FIPS 4049

ON 2 DISTRICT 2



Sheet Key

1

2

3

4

5

6

7

8

LEGEND

INTERSTATE US NC

Divided Hwy

Undivided Hwy

Blue Ridge Parkway

Unpaved Surface Road

Gravel Surface Road

Non-System Road

Provisionally Drawn Road

Project Location

Intersection Distance

Interstate Highway

U.S. Numbered Highway

N.C. Numbered Highway

U.S. Numbered Bicycle Route

N.C. Numbered Bicycle Route

Interstate Interchange Number

Secondary Road Number

Utility Lines

Railroad Line

Railroad Station

Inset Area

State Line

County Line

Smoothed Urban Boundaries

City Limits

Ferry Route and Ramp

Narrow Creek or Stream

Wide River or Creek

Reservoir, Pond or Lake w/ Island

Dam or Dam with Lock

Waterfall

Swamp

Community

County Seat

School

College or University

Hospital

Coast Guard Station

Church

Church with Cemetery

Cemetery

Patrol Station

Correction or Penal Institution

Quarry

Mine or Pit

Highway Garage or Maint. Yard

Highway Div. or Dist. Office

Military Post

Wreath Station

Fairgrounds

Historical Site

Points of Interest

Post Office

State Forest

Lighthouse

Mountain Summit

Mountain Gap

Overlook

Rest Area

Visitor Ctr. Rest Area

Welcome Ctr. Rest Area

Airport

Military Airport

National / State Forest Boundary

Wildlife Refuge

National / State Park Boundary

Game Lands Boundary

Military Reservation Boundary

Indian Reservation Boundary

Bridge

City Bridge

City Sign

City Culvert

Culvert

Draw Bridge

Foot Pedestrian Bridge

Foot Non-Nbr. Bridge

Ferry Ramp

Federal Bridge

Non-System Maint. by NCDOT

NCDOT Overpass Structure

Private Structure

Pavement on Field

City Pipe

Pipe

Railroad Bridge

Overhead Sign

Tunnel

Vertical Clear. Underpass

Vertical Clear. Overpass

Pedestrian Walkway

Top Pole Sign

CRAVEN COUNTY
NORTH CAROLINA
BRIDGE LOCATION MAP

PREPARED BY THE
NORTH CAROLINA DEPARTMENT OF TRANSPORTATION
OPERATIONS PROGRAM MANAGEMENT UNIT - MAPPING SECTION
IN COOPERATION WITH THE
U.S. DEPARTMENT OF TRANSPORTATION
FEDERAL HIGHWAY ADMINISTRATION

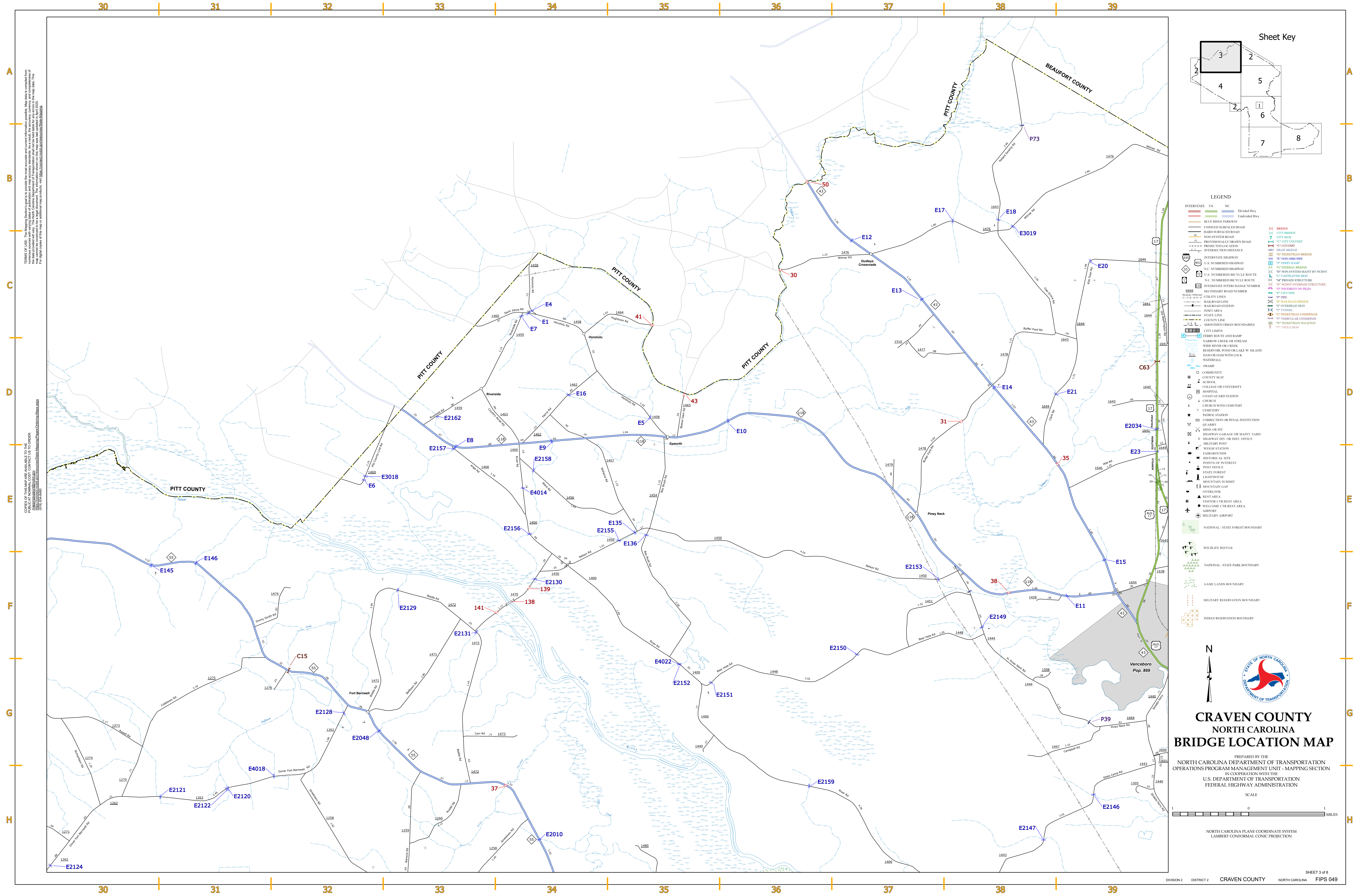
SCALE

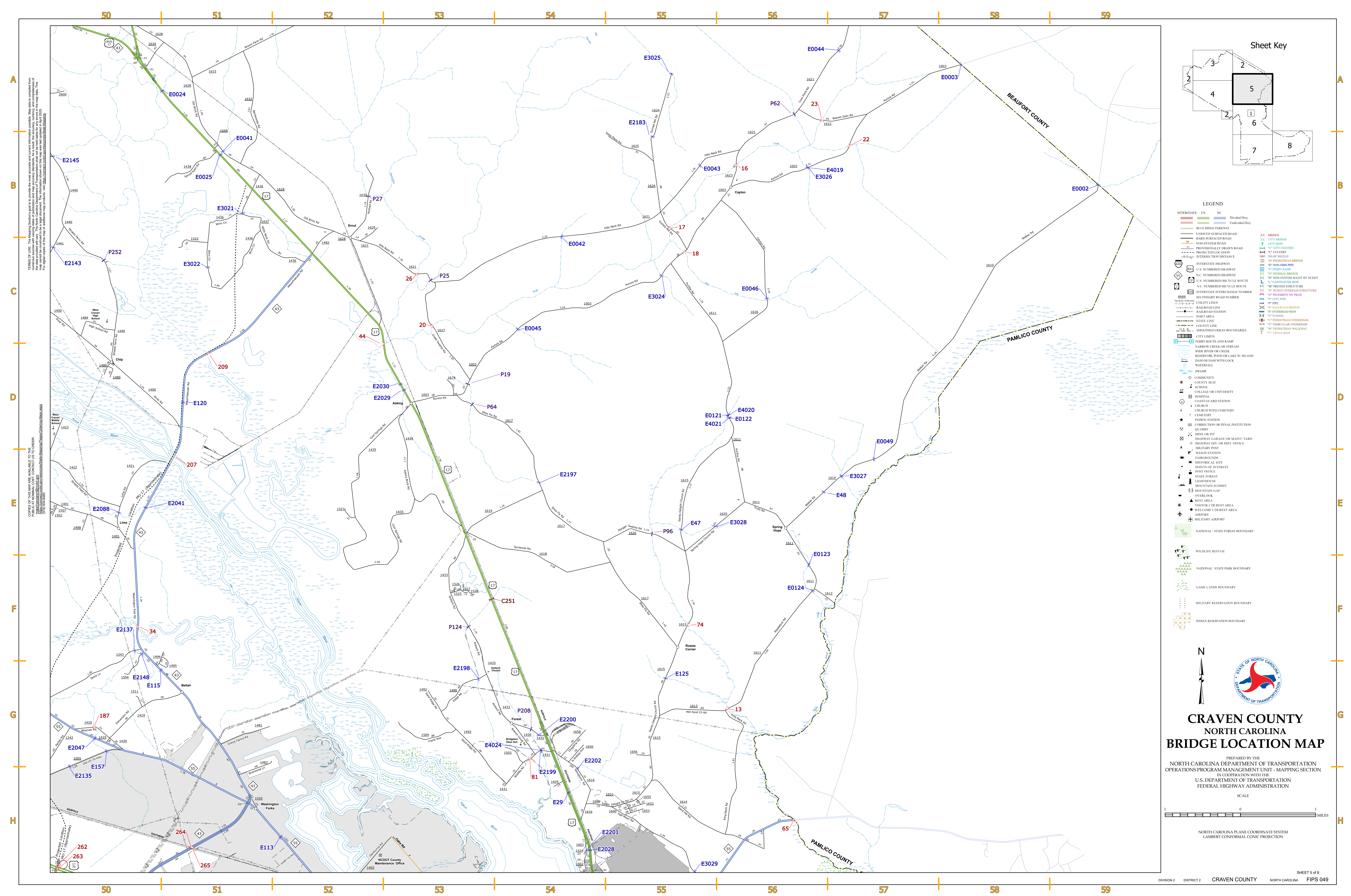
1 0 1
MILES

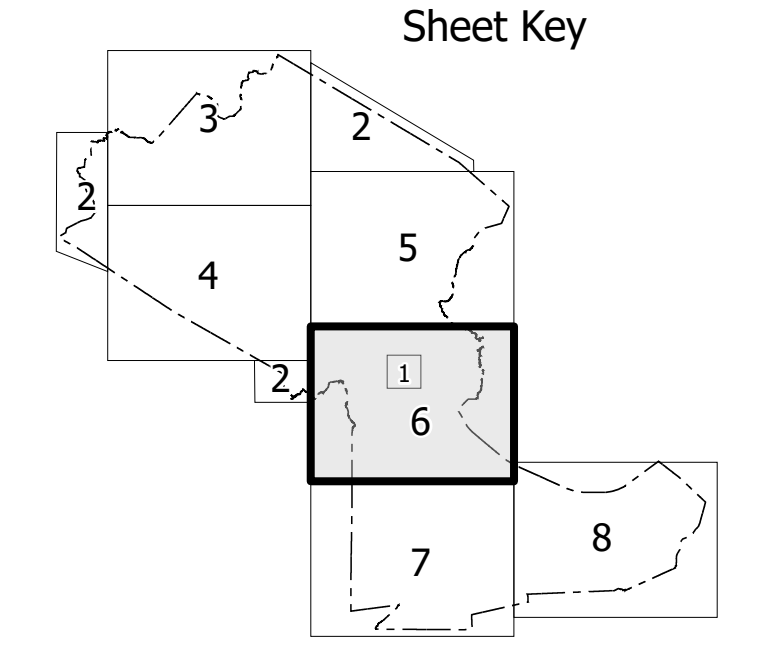
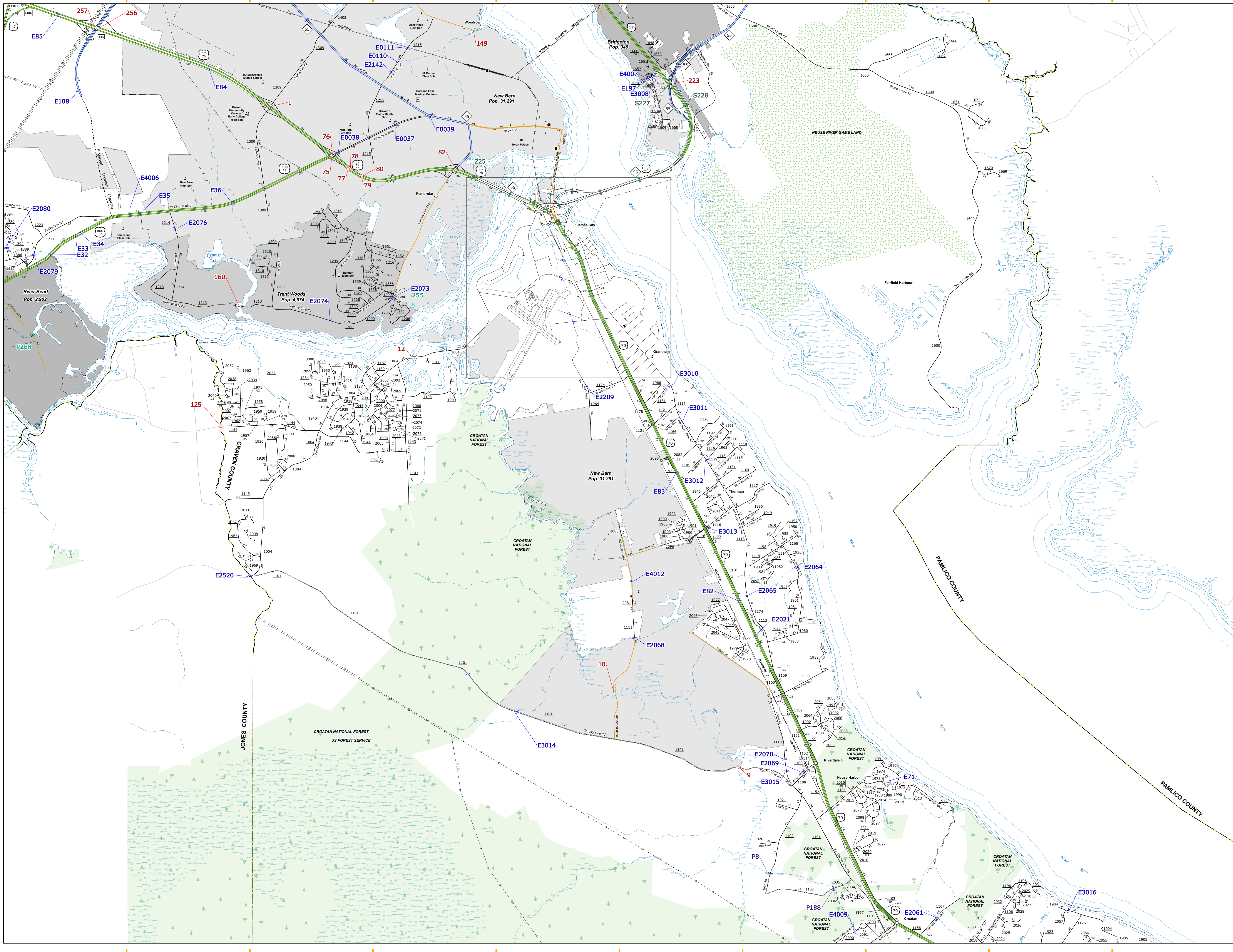
NORTH CAROLINA PLANE COORDINATE SYSTEM
LAMBERT CONFORMAL CONIC PROJECTION

DIVISION 2 DISTRICT 2 CRAVEN COUNTY NORTH CAROLINA

SHEET 2 of 8
FIPS 049







- LEGEND**
- | | | | | |
|-----------------------------------|--------------------------------|-------------------------------|-------------------------------|----------------------------------|
| INTERSTATE | US | NC | Divided Hwy | Undivided Hwy |
| BLUE RIDGE PARKWAY | UNPAVED SURFACE ROAD | HARD SURFACE ROAD | NON-SYSTEM ROAD | PROVISIONALLY DRAWN ROAD |
| PROTECTED BIKEWAY | INTERSECTION DISTANCE | INTERSTATE HIGHWAY | U.S. NUMBERED HIGHWAY | N.C. NUMBERED HIGHWAY |
| U.S. NUMBERED BIKEWAY | N.C. NUMBERED BIKEWAY | INTERSTATE INTERCHANGE NUMBER | SECONDARY ROAD NUMBER | UTILITY LINES |
| RAILROAD LINE | RAILROAD STATION | INSET AREA | STATE LINE | COUNTY LINE |
| SMOOTHED URBAN BOUNDARIES | CITY LIMITS | FERRY ROUTE AND RAMP | NARROW CREEK OR STREAM | WIDE RIVER OR CREEK |
| RESERVOIR, POND OR LAKE W/ ISLAND | DAM OR DAM WITH LOCK | WATERFALL | SWAMP | COMMUNITY |
| COUNTY SEAT | SCHOOL | COLLEGE OR UNIVERSITY | HOSPITAL | COAST GUARD STATION |
| CHURCH | CHURCH WITH CEMETERY | CEMETERY | PATROL STATION | CORRECTION OR PENAL INSTITUTION |
| QUARRY | MINE OR PIT | HIGHWAY BOY OR DIST. OFFICE | MILITARY POST | WEIGH STATION |
| FAIRGROUNDS | HISTORICAL SITE | POINTS OF INTEREST | POST OFFICE | STATE FOREST |
| LIGHTHOUSE | MOUNTAIN SUMMIT | MOUNTAIN GAP | OVERLOOK | REST AREA |
| VISITOR CTR/REST AREA | WELCOME CTR/REST AREA | AIRPORT | MILITARY AIRPORT | NATIONAL / STATE FOREST BOUNDARY |
| WILDLIFE REFUGE | NATIONAL / STATE PARK BOUNDARY | GAME LANDS BOUNDARY | MILITARY RESERVATION BOUNDARY | INDIAN RESERVATION BOUNDARY |

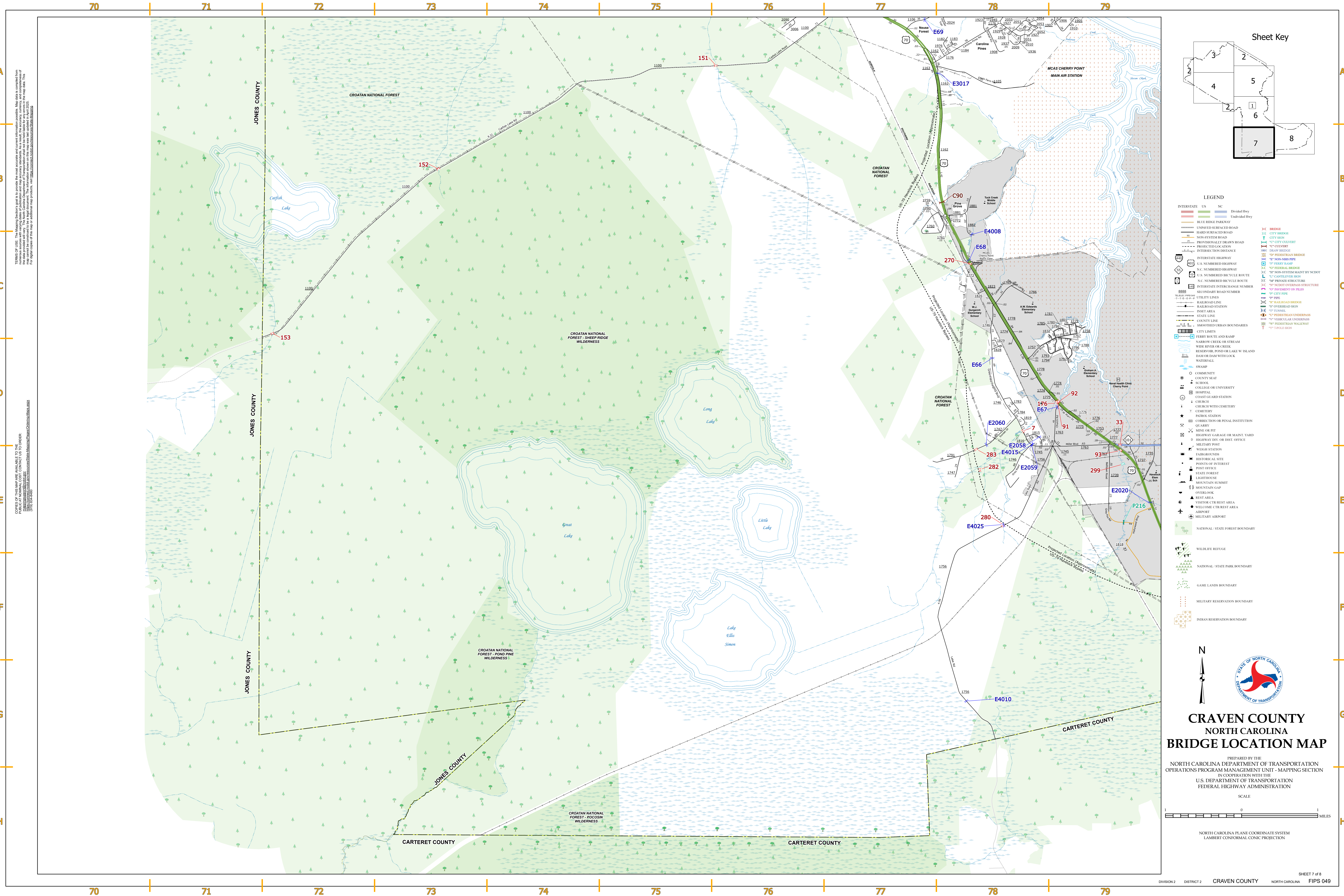
CRAVEN COUNTY
NORTH CAROLINA
BRIDGE LOCATION MAP

PREPARED BY THE
NORTH CAROLINA DEPARTMENT OF TRANSPORTATION
OPERATIONS PROGRAM MANAGEMENT UNIT - MAPPING SECTION
IN COOPERATION WITH THE
U.S. DEPARTMENT OF TRANSPORTATION
FEDERAL HIGHWAY ADMINISTRATION

SCALE

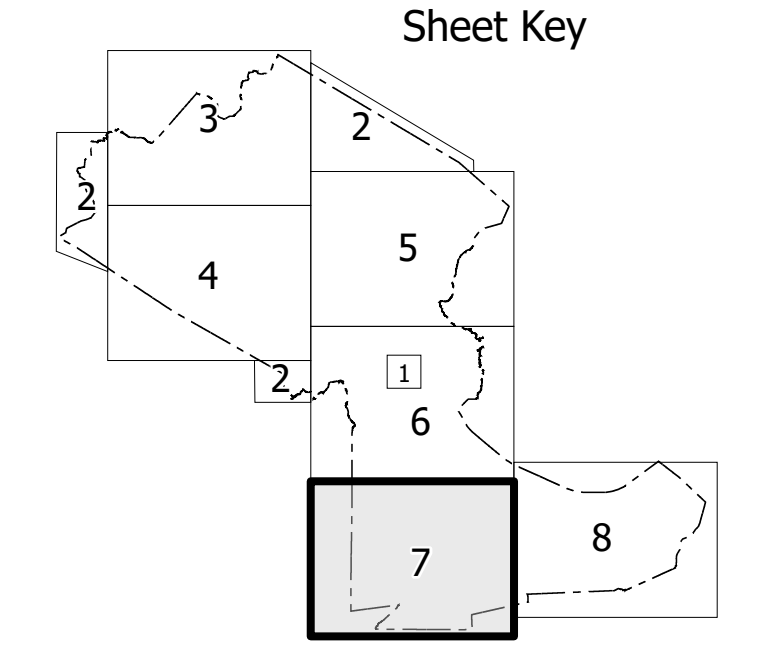
1 0 1
MILES

NORTH CAROLINA PLANE COORDINATE SYSTEM
LAMBERT CONFORMAL CONIC PROJECTION



THIS MAP IS FOR INFORMATIONAL PURPOSES ONLY. It is not intended to be used for legal purposes. The data is derived from numerous sources with varying degrees of accuracy. As a result, the accuracy, completeness, and timeliness of the information cannot be guaranteed. The information shown on this map is for informational purposes only. For digital copies of this map or additional map products, visit www.ncdot.gov/Information/Maps/Products/Products.aspx.

CRAVEN COUNTY NORTH CAROLINA
PUBLIC AT NO ADDITIONAL COST. CONTACT US TO ORDER:
1-800-368-3346
(919) 844-8400



- LEGEND**
- | | | | | |
|-----------------------------------|----|----|-------------|---------------|
| INTERSTATE HIGHWAY | US | NC | Divided Hwy | Undivided Hwy |
| BLUE RIDGE PARKWAY | | | | |
| UNPAVED SURFACE ROAD | | | | |
| HARD SURFACE ROAD | | | | |
| NON-SYSTEM ROAD | | | | |
| PROVISIONALLY DRAWN ROAD | | | | |
| PROTECTED LANE | | | | |
| INTERSECTION DISTANCE | | | | |
| INTERSTATE HIGHWAY | | | | |
| U.S. NUMBERED HIGHWAY | | | | |
| N.C. NUMBERED HIGHWAY | | | | |
| U.S. NUMBERED BICYCLE ROUTE | | | | |
| N.C. NUMBERED BICYCLE ROUTE | | | | |
| INTERSTATE INTERCHANGE NUMBER | | | | |
| SECONDARY ROAD NUMBER | | | | |
| RAILROAD LINE | | | | |
| RAILROAD STATION | | | | |
| INSET AREA | | | | |
| STATE LINE | | | | |
| COUNTY LINE | | | | |
| SMOOTHED URBAN BOUNDARIES | | | | |
| CITY LIMITS | | | | |
| FERRY ROUTE AND RAMP | | | | |
| NARROW CREEK OR STREAM | | | | |
| WIDE RIVER OR CREEK | | | | |
| RESERVOIR, POND OR LAKE W/ ISLAND | | | | |
| DAM OR DAM WITH LOCK | | | | |
| WATERFALL | | | | |
| SWAMP | | | | |
| COMMUNITY | | | | |
| COUNTY SEAT | | | | |
| SCHOOL | | | | |
| COLLEGE OR UNIVERSITY | | | | |
| HOSPITAL | | | | |
| COAST GUARD STATION | | | | |
| CHURCH | | | | |
| CHURCH WITH CEMETERY | | | | |
| CEMETERY | | | | |
| PATROL STATION | | | | |
| CORRECTION OR PENAL INSTITUTION | | | | |
| QUARRY | | | | |
| MINE OR PIT | | | | |
| HIGHWAY BOY OR DIST. OFFICE | | | | |
| MILITARY POST | | | | |
| WEIGH STATION | | | | |
| FARMHOUSE | | | | |
| HISTORICAL SITE | | | | |
| POINTS OF INTEREST | | | | |
| POST OFFICE | | | | |
| STATE FOREST | | | | |
| LIGHTHOUSE | | | | |
| MOUNTAIN SUMMIT | | | | |
| MOUNTAIN GAP | | | | |
| OVERLOOK | | | | |
| REST AREA | | | | |
| VISITOR CTR/REST AREA | | | | |
| WELCOME CTR/REST AREA | | | | |
| AIRPORT | | | | |
| MILITARY AIRPORT | | | | |
| NATIONAL / STATE FOREST BOUNDARY | | | | |
| WILDLIFE REFUGE | | | | |
| NATIONAL / STATE PARK BOUNDARY | | | | |
| GAME LANDS BOUNDARY | | | | |
| MILITARY RESERVATION BOUNDARY | | | | |
| INDIAN RESERVATION BOUNDARY | | | | |

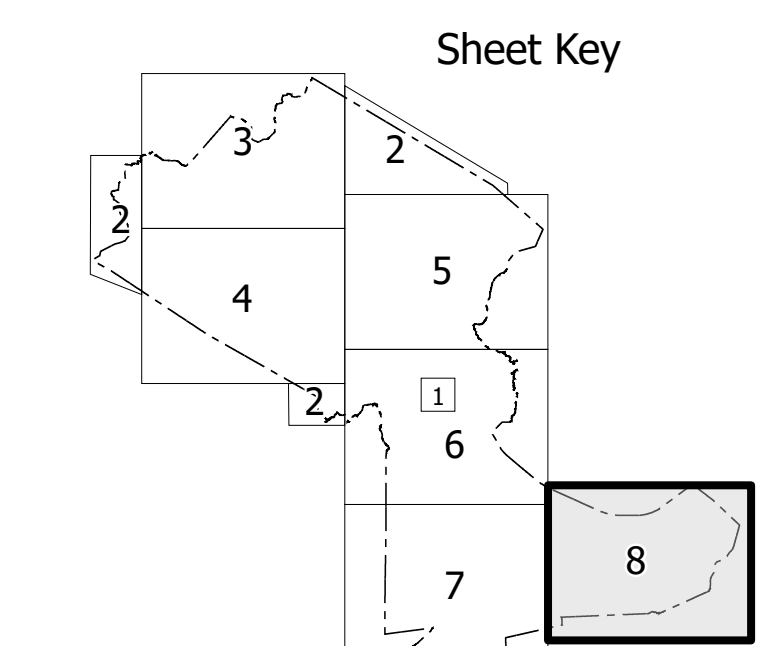
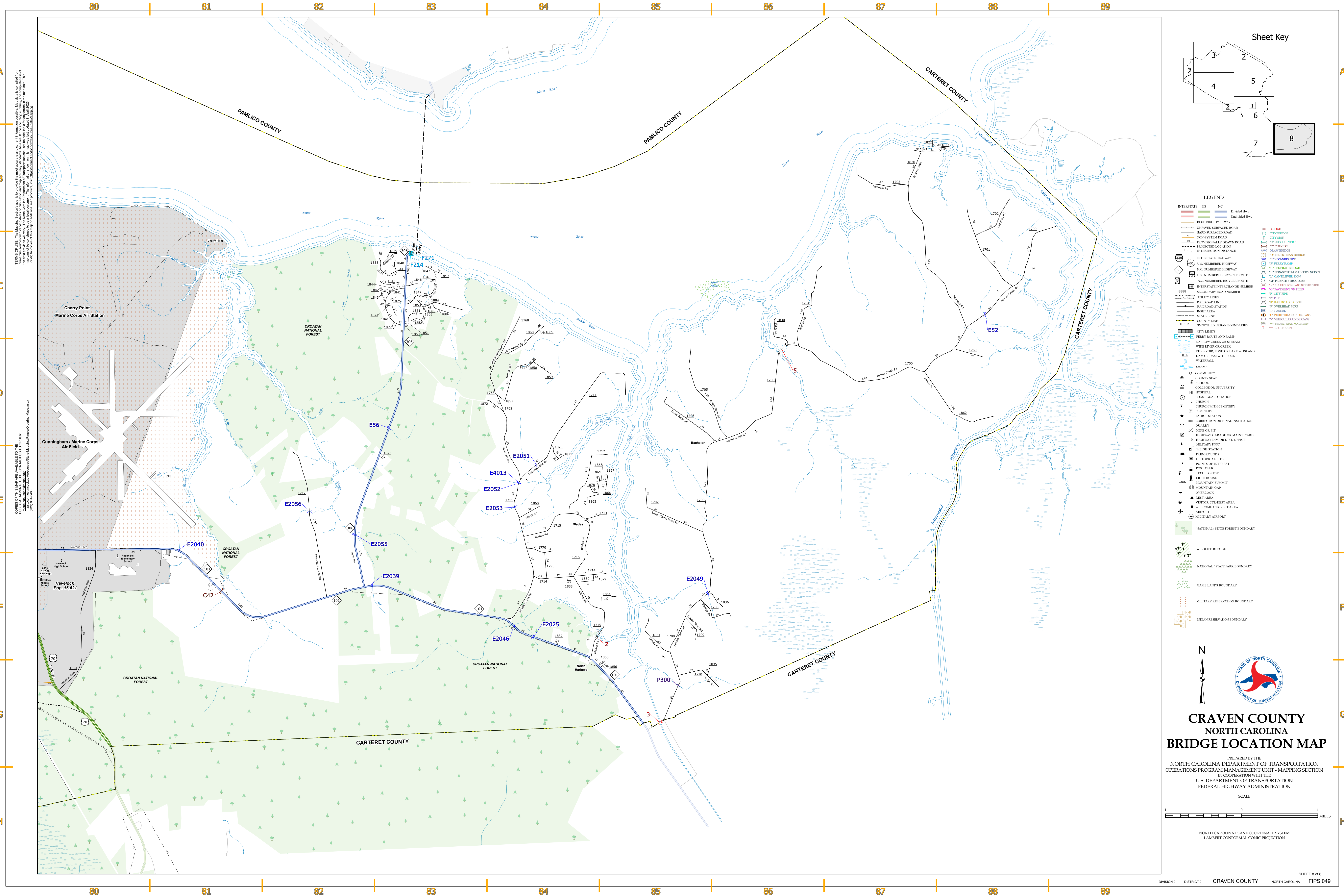
CRAVEN COUNTY
NORTH CAROLINA
BRIDGE LOCATION MAP

PREPARED BY THE
NORTH CAROLINA DEPARTMENT OF TRANSPORTATION
OPERATIONS PROGRAM MANAGEMENT UNIT - MAPPING SECTION
IN COOPERATION WITH THE
U.S. DEPARTMENT OF TRANSPORTATION
FEDERAL HIGHWAY ADMINISTRATION

SCALE

1 0 1
MILES

NORTH CAROLINA PLANE COORDINATE SYSTEM
LAMBERT CONFORMAL CONIC PROJECTION



- LEGEND**
- | | | | | |
|-----------------------------------|----|----|-------------|---------------|
| INTERSTATE | US | NC | Divided Hwy | Undivided Hwy |
| BLUE RIDGE PARKWAY | | | | |
| UNPAVED SURFACE ROAD | | | | |
| ROAD SURFACE ROAD | | | | |
| NON-SYSTEM ROAD | | | | |
| PROVISIONALLY DRAWN ROAD | | | | |
| PROJECTED OR ATTN | | | | |
| INTERSECTION DISTANCE | | | | |
| INTERSTATE HIGHWAY | | | | |
| U.S. NUMBERED HIGHWAY | | | | |
| N.C. NUMBERED HIGHWAY | | | | |
| U.S. NUMBERED BICYCLE ROUTE | | | | |
| N.C. NUMBERED BICYCLE ROUTE | | | | |
| INTERSTATE INTERCHANGE NUMBER | | | | |
| SECONDARY ROAD NUMBER | | | | |
| UTILITY LINES | | | | |
| RAILROAD LINE | | | | |
| RAILROAD STATION | | | | |
| INSET AREA | | | | |
| STATE LINE | | | | |
| COUNTY LINE | | | | |
| SMOOTHED URBAN BOUNDARIES | | | | |
| CITY LIMITS | | | | |
| FERRY ROUTE AND RAMP | | | | |
| NARROW CREEK OR STREAM | | | | |
| WIDE RIVER OR CREEK | | | | |
| RESERVOIR, POND OR LAKE W/ ISLAND | | | | |
| DAM OR DAM WITH LOCK | | | | |
| WATERFALL | | | | |
| SWAMP | | | | |
| COMMUNITY | | | | |
| COUNTY SEAT | | | | |
| SCHOOL | | | | |
| COLLEGE OR UNIVERSITY | | | | |
| HOSPITAL | | | | |
| COAST GUARD STATION | | | | |
| CHURCH | | | | |
| CHURCH WITH CEMETERY | | | | |
| CEMETERY | | | | |
| PATROL STATION | | | | |
| CORRECTION OR PENAL INSTITUTION | | | | |
| QUARRY | | | | |
| MINE OR PIT | | | | |
| HIGHWAY GARAGE OR MAINT. YARD | | | | |
| HIGHWAY RV OR REST. OFFICE | | | | |
| MILITARY POST | | | | |
| WEIGH STATION | | | | |
| FAIRGROUNDS | | | | |
| HISTORICAL SITE | | | | |
| POINTS OF INTEREST | | | | |
| POST OFFICE | | | | |
| STATE FOREST | | | | |
| LIGHTHOUSE | | | | |
| MOUNTAIN SUMMIT | | | | |
| MOUNTAIN GAP | | | | |
| OVERLOOK | | | | |
| REST AREA | | | | |
| VISITOR CTR./REST AREA | | | | |
| WELCOME CTR./REST AREA | | | | |
| AIRPORT | | | | |
| MILITARY AIRPORT | | | | |
| NATIONAL / STATE FOREST BOUNDARY | | | | |
| WILDLIFE REFUGE | | | | |
| NATIONAL / STATE PARK BOUNDARY | | | | |
| GAME LANDS BOUNDARY | | | | |
| MILITARY RESERVATION BOUNDARY | | | | |
| INDIAN RESERVATION BOUNDARY | | | | |

CRAVEN COUNTY
NORTH CAROLINA
BRIDGE LOCATION MAP

PREPARED BY THE
NORTH CAROLINA DEPARTMENT OF TRANSPORTATION
OPERATIONS PROGRAM MANAGEMENT UNIT - MAPPING SECTION
IN COOPERATION WITH THE
U.S. DEPARTMENT OF TRANSPORTATION
FEDERAL HIGHWAY ADMINISTRATION

SCALE
1 0 1
MILES

NORTH CAROLINA PLANE COORDINATE SYSTEM
LAMBERT CONFORMAL CONIC PROJECTION