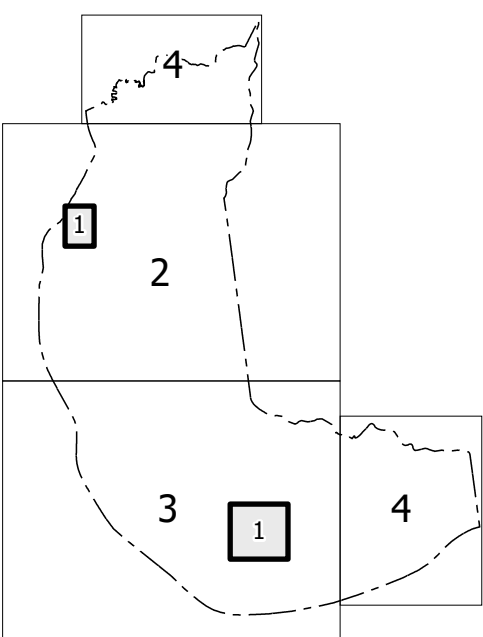


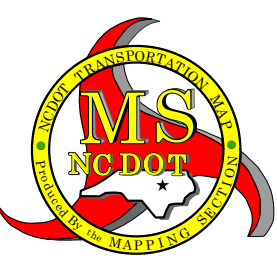
Sheet Key



LEGEND

- INTERSTATE US NC Divided Hwy Undivided Hwy
- BLUE RIDGE PARKWAY
- UNPAVED SURFACED ROAD
- ROAD NOT TO ROAD
- NON-SYSTEM ROAD
- PROTOTYPALLY DRAWN ROAD
- PROPOSED TRUCK CARRON
- INTERSECTION DISTANCE
- INTERSTATE HIGHWAY
- U.S. NUMBERED HIGHWAY
- N.C. NUMBERED HIGHWAY
- N.C. NUMBERED BI-CYCLE ROUTE
- N.C. NUMBERED BI-CYCLE ROUTE
- INTERSTATE INTERCHANGE NUMBER
- SECONDARY ROAD NUMBER
- UTILITY LINES
- RAILROAD LINE
- RAILROAD STATION
- INSET AREA
- STATE LINE
- COUNTY LINE
- ADJACENT TOWN BOUNDARIES
- CITY LIMITS
- FERRY ROUTE AND RAMP
- NARROW CREEK OR STREAM
- WIDE RIVER OR CREEK
- RESERVOIR, POND OR LAKE W/ ISLAND
- DAM OR DAM WITH LOCK
- WATERFALL
- SWAMP
- COMMUNITY
- COUNTY SEAT
- SCHOOL
- COLLEGE OR UNIVERSITY
- HOSPITAL
- COAST GUARD STATION
- CHURCH
- CHURCH WITH CEMETERY
- CEMETERY
- POLICE STATION
- CORRECTION OR PENAL INSTITUTION
- QUARRY
- MINE OR PIT
- HIGHWAY GARAGE OR MAIN YARD
- HIGHWAY EXC. OR DIST. OFFICE
- MILITARY POST
- WEIGH STATION
- FARROW/ROAD
- POINTS OF INTEREST
- POST OFFICE
- STATE FOREST
- HISTORIC HOME
- MOUNTAIN SUMMIT
- MOUNTAIN GAP
- OVERLOOK
- HIST. AREA
- REST AREA
- WILDCR. TR. REST AREA
- WILDCR. TR. REST AREA
- WILDCR. TR. REST AREA
- MILITARY AIRPORT
- NATIONAL STATE FOREST BOUNDARY
- WILDCR. REFUGE
- NATIONAL STATE PARK BOUNDARY
- GAME LANDS BOUNDARY
- MILITARY RESERVATION BOUNDARY
- INDIAN RESERVATION BOUNDARY

- BRIDGE
- CITY BRIDGE
- CITY SIGN
- CITY CULVERT
- CITY CULVERT
- DEAN BRIDGE
- PEDESTRIAN BRIDGE
- MONUMENT
- FERRY RAMP
- FEDERAL BRIDGE
- NON-SYSTEM MAINT BY NC DOT
- CANTILEVER SIGN
- PRIVATE STRUCTURE
- NC DOT OVERPASS STRUCTURE
- PAYMENT ON FILE
- CITY PIPE
- PIPE
- OVERHEAD SIGN
- TUNNEL
- PEDESTRIAN UNDERPASS
- VEHICULAR UNDERPASS
- PEDESTRIAN WALKWAY
- POLE SIGN



CHOWAN COUNTY
NORTH CAROLINA
BRIDGE LOCATION MAP

PREPARED BY THE
NORTH CAROLINA DEPARTMENT OF TRANSPORTATION
OPERATIONS PROGRAM MANAGEMENT UNIT - MAPPING SECTION
IN COOPERATION WITH THE
U.S. DEPARTMENT OF TRANSPORTATION
FEDERAL HIGHWAY ADMINISTRATION

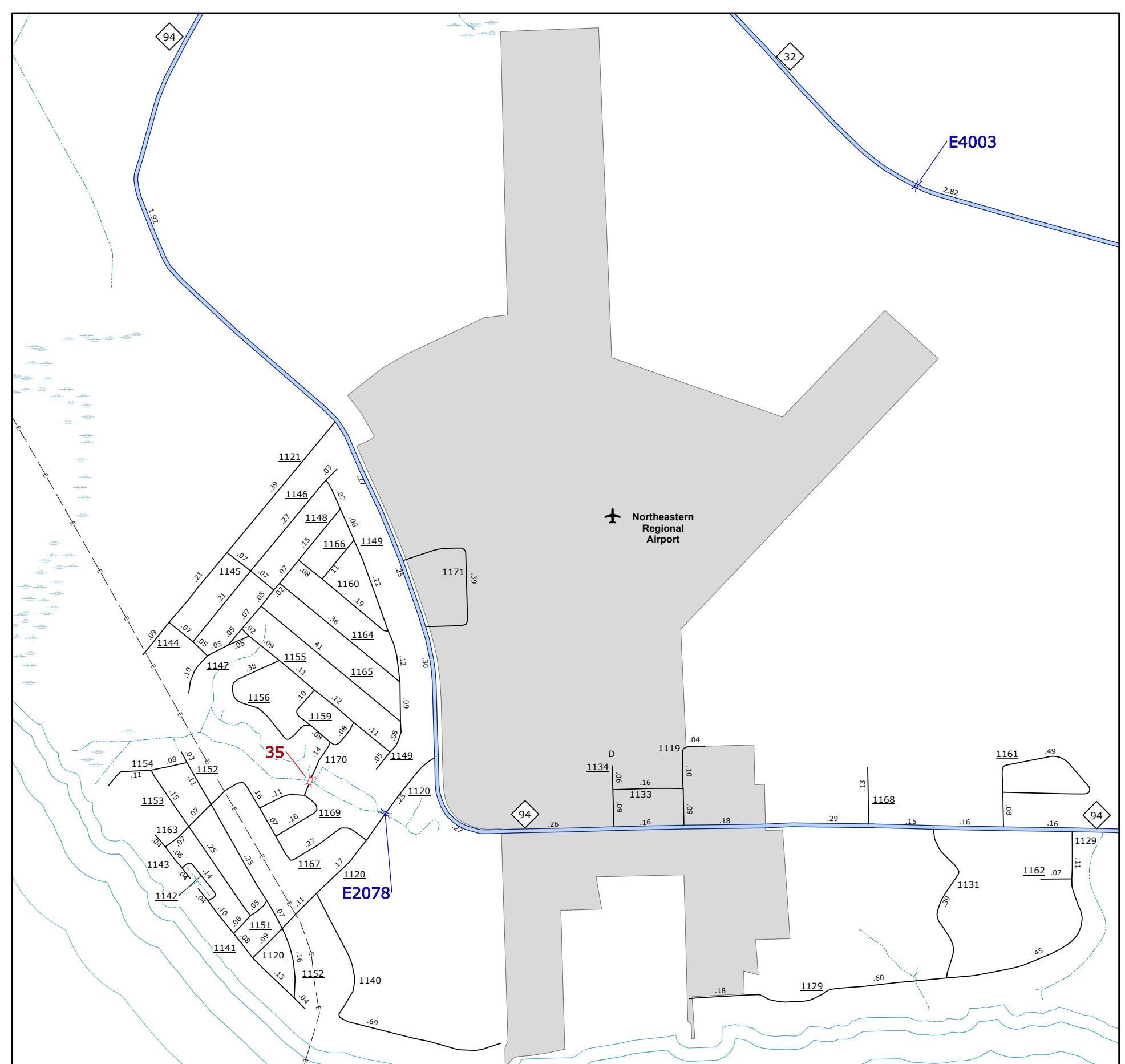
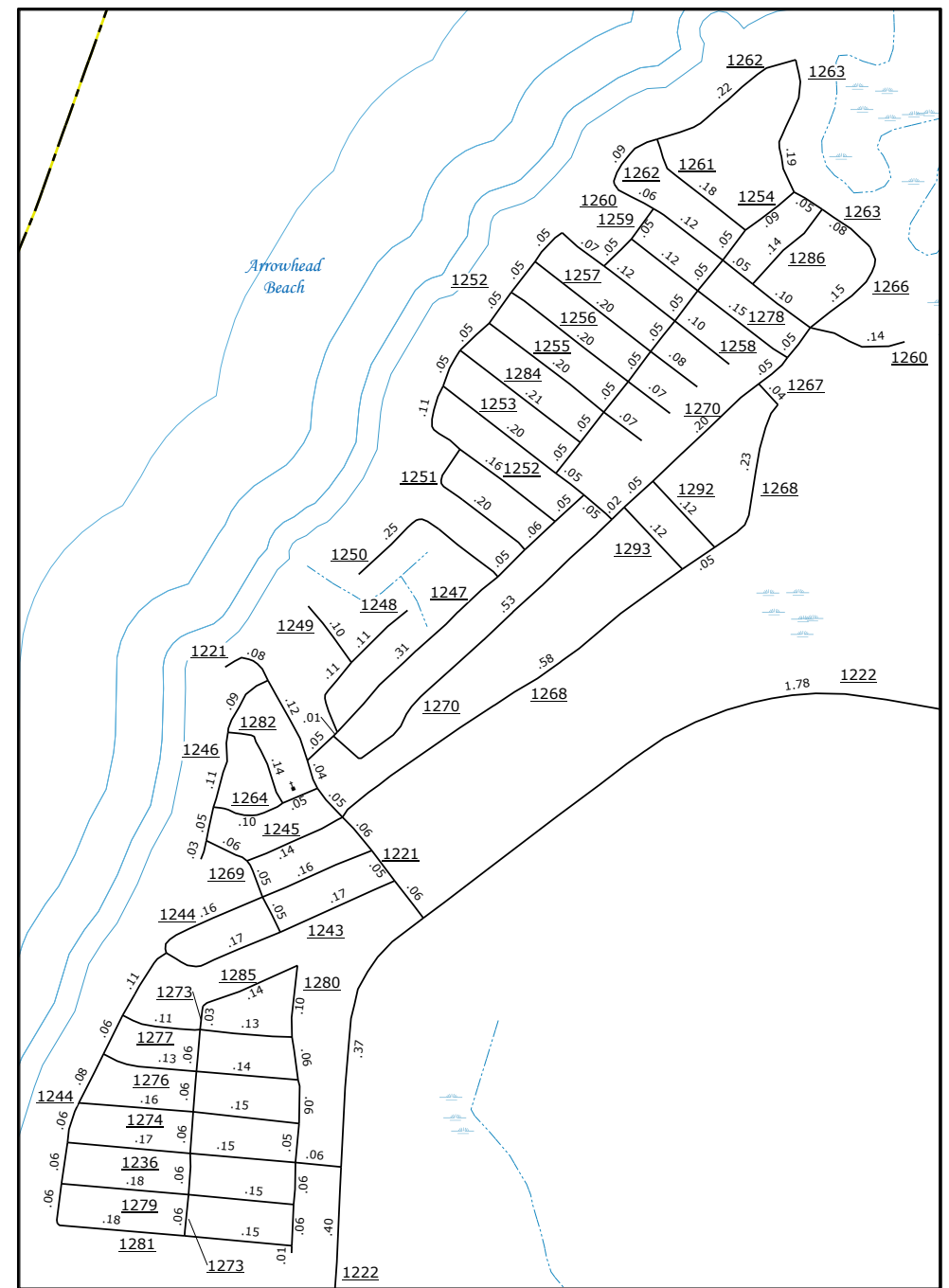
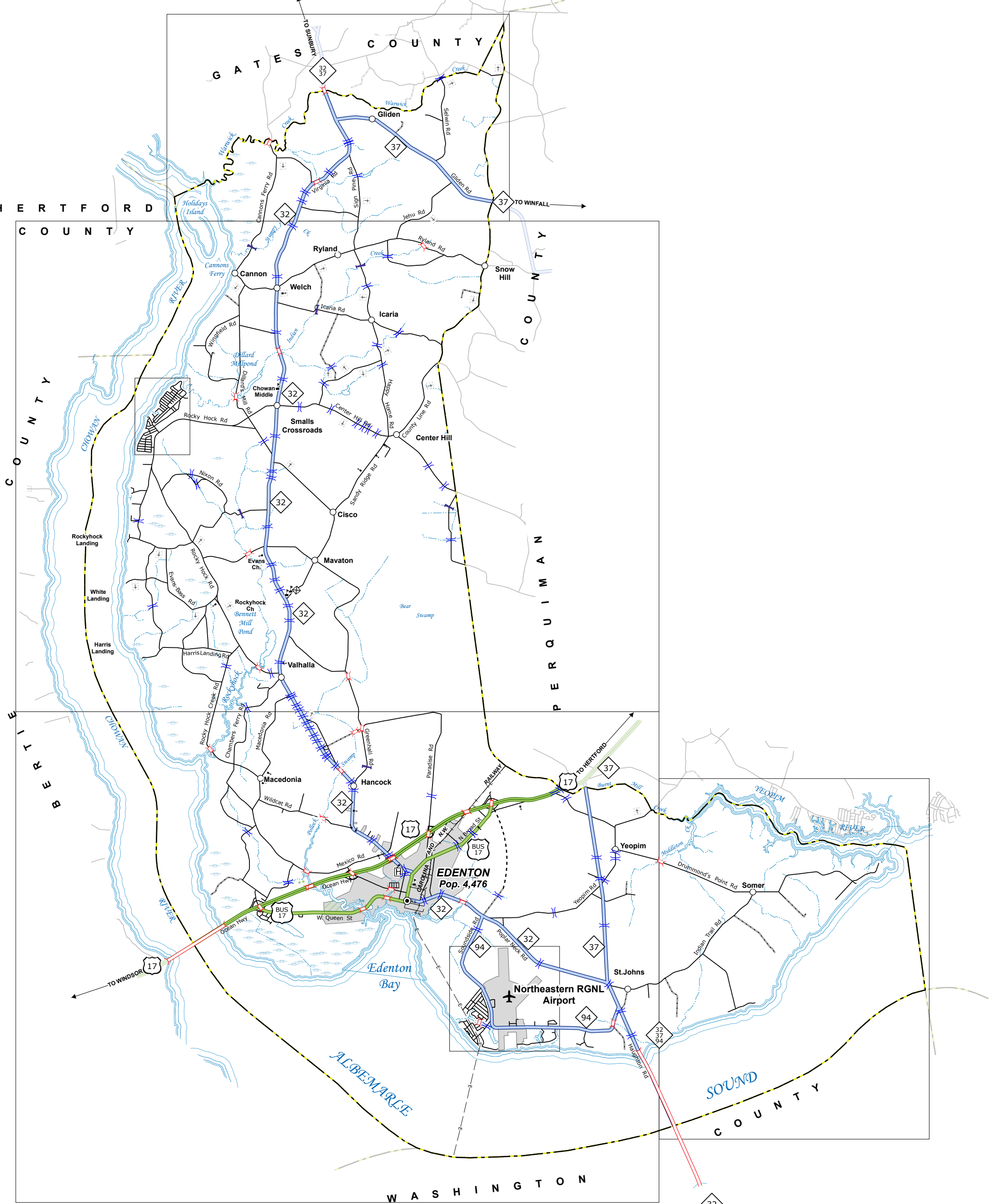
SCALE
0 1 2 3 4
MILES

SCALE FOR ENLARGEMENTS
0 0.5
MILES

NORTH CAROLINA PLANE COORDINATE SYSTEM
LAMBERT CONFORMAL CONIC PROJECTION

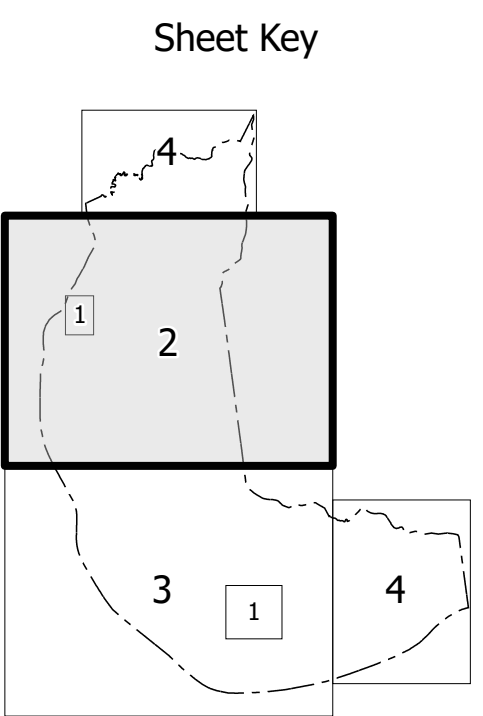
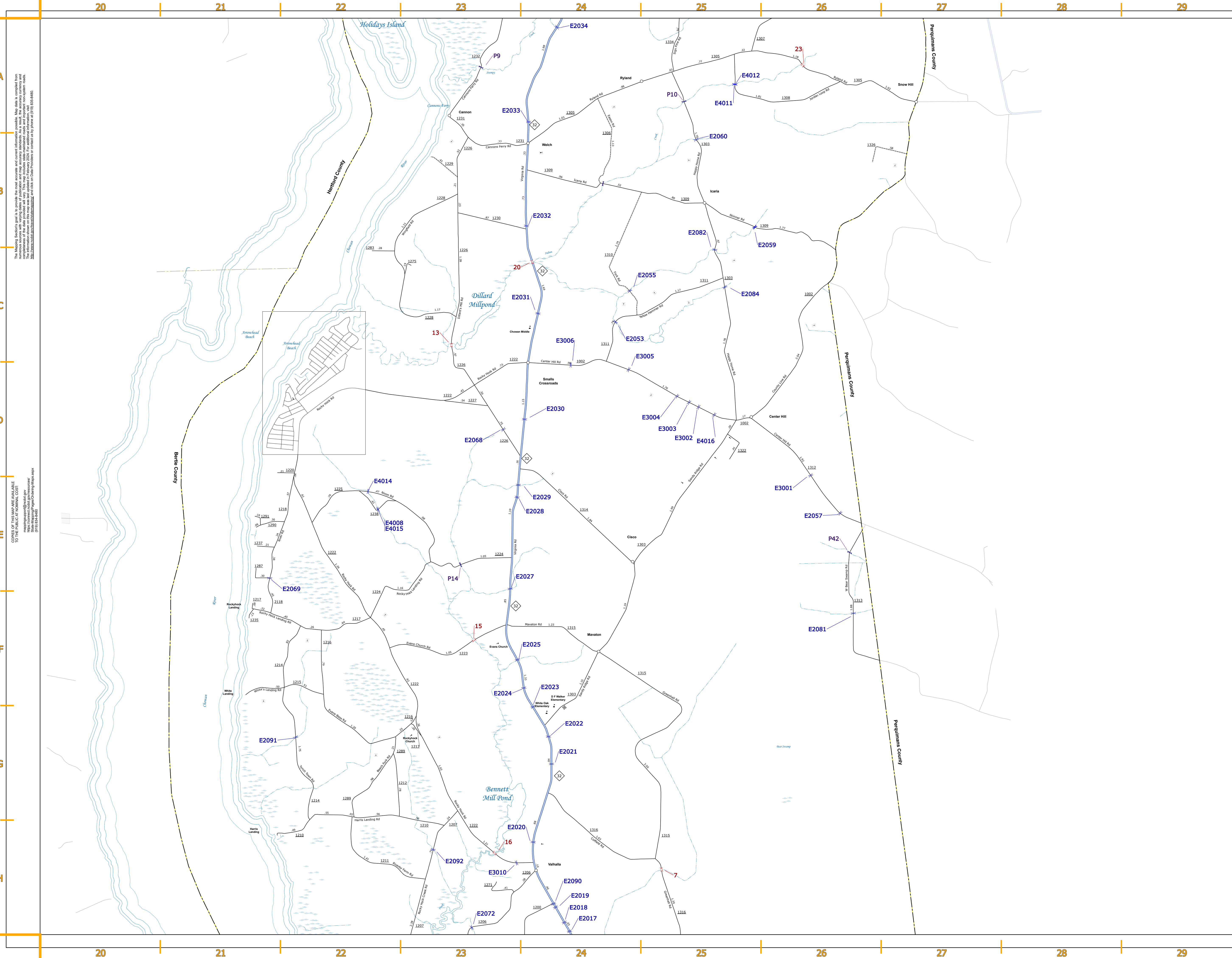
SHEET 1 OF 4

DIVISION 1 DISTRICT 3 CHOWAN COUNTY NORTH CAROLINA FIPS 041



COPIES OF THIS MAP ARE AVAILABLE
TO THE PUBLIC AT NOMINAL COST:
mapping@ncdot.gov
https://www.ncdot.gov/resources/State-Mapping/Pages/Ordering-Maps.aspx
(919) 834-8440

The Mapping Section's goal is to provide the most accurate and current information possible. Map data is compiled from numerous sources with varying dates of publication and map accuracy standards. As a result, the accuracy, currency, and completeness of the data provided will vary. This map includes state-maintained roads and important non-system roads. The information shown on this map was last updated in February 2024. For additional information, visit <https://www.ncdot.gov/transportation/State-Mapping/Pages/Ordering-Maps.aspx> and click on Data Providers or contact us by phone at (919) 834-8440.



- LEGEND**
- INTERSTATE US NC
 - Divided Hwy
 - Undivided Hwy
 - BLUE RIDGE PARKWAY
 - UNPAVED SURFACED ROAD
 - HARD SURFACED ROAD
 - NON-SYSTEM ROAD
 - PROVISIONALLY DRAWN ROAD
 - PROTECTED LOCATION
 - INTERSECTION DISTANCE
 - INTERSTATE HIGHWAY
 - U.S. NUMBERED HIGHWAY
 - N.C. NUMBERED HIGHWAY
 - U.S. NUMBERED BI-CYCLE ROUTE
 - N.C. NUMBERED BI-CYCLE ROUTE
 - INTERSTATE INTERCHANGE NUMBER
 - SECONDARY ROAD NUMBER
 - UTILITY LINES
 - RAILROAD LINE
 - RAILROAD STATION
 - INSET AREA
 - STATE LINE
 - COUNTY LINE
 - SMOOTHED URBAN BOUNDARIES
 - CITY LIMITS
 - FERRY ROUTE AND RAMP
 - NARROW CREEK OR STREAM
 - WIDE RIVER OR CREEK
 - RESERVOIR, POND OR LAKE W/ ISLAND
 - DAM OR DAM WITH LOCK
 - WASTEWALL
 - SWAMP
 - COMMUNITY
 - COUNTY SEAT
 - SCHOOL
 - COLLEGE OR UNIVERSITY
 - HOSPITAL
 - COAST GUARD STATION
 - CHURCH
 - CHURCH WITH CEMETERY
 - CEMETERY
 - PATROL STATION
 - CORRECTION OR PENAL INSTITUTION
 - QUARRY
 - MINE OR PIT
 - HIGHWAY GARAGE OR MAIN YARD
 - HIGHWAY DIV. OR REST OFFICE
 - MILITARY POST
 - WEIGH STATION
 - FARGROUNDS
 - HISTORICAL SITE
 - POINTS OF INTEREST
 - POST OFFICE
 - STATE FOREST
 - LIGHTHOUSE
 - MOUNTAIN SUMMIT
 - OVERLOOK
 - MOUNTAIN GAP
 - REST AREA
 - VISITOR CENTER AREA
 - WELCOME CENTER AREA
 - AIRPORT
 - MILITARY AIRPORT
 - NATIONAL / STATE FOREST BOUNDARY
 - WILDLIFE REFUGE
 - NATIONAL / STATE PARK BOUNDARY
 - GAME LANDS BOUNDARY
 - MILITARY RESERVATION BOUNDARY
 - INDIAN RESERVATION BOUNDARY

CHOWAN COUNTY
NORTH CAROLINA
BRIDGE LOCATION MAP

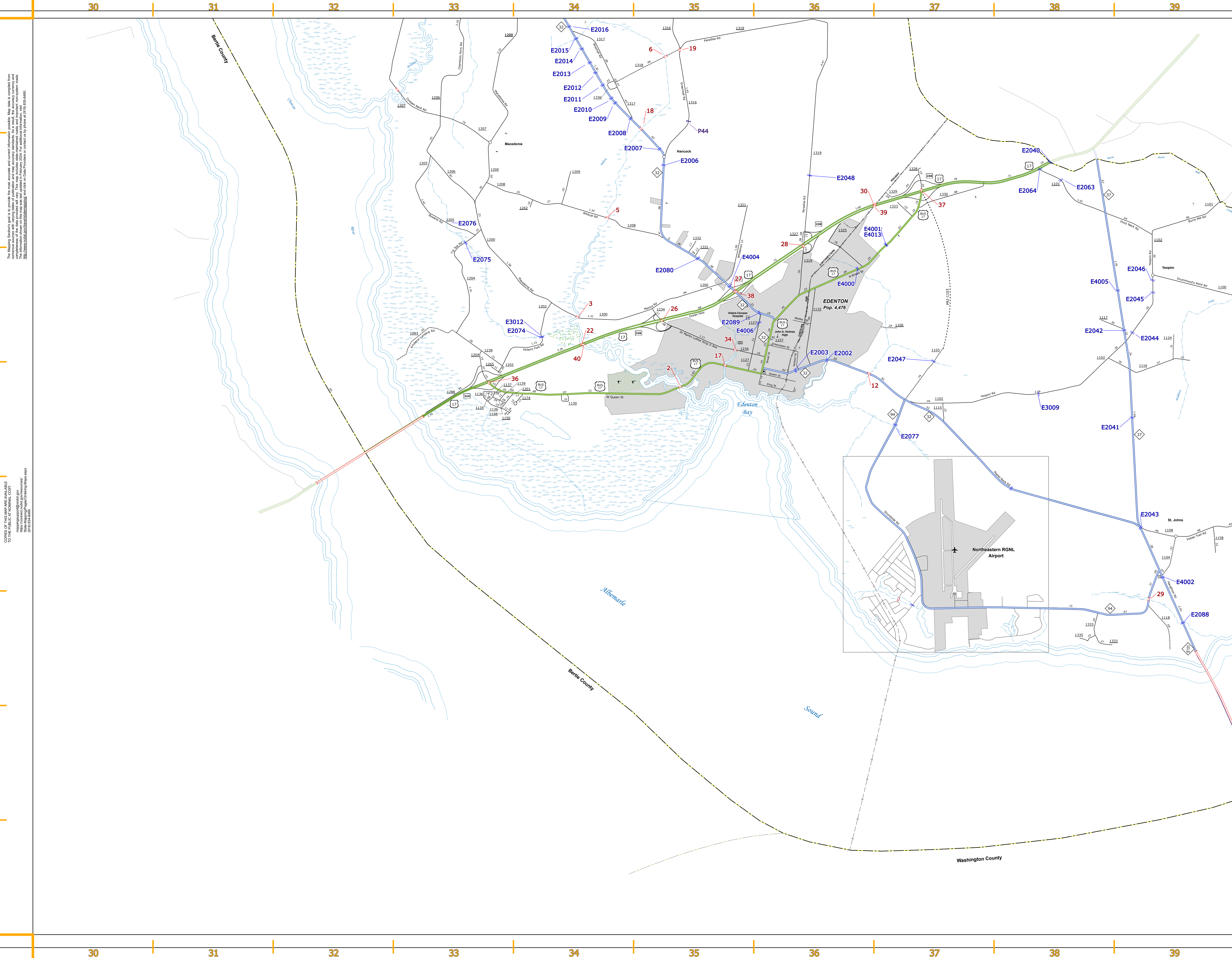
PREPARED BY THE
NORTH CAROLINA DEPARTMENT OF TRANSPORTATION
OPERATIONS PROGRAM MANAGEMENT UNIT - MAPPING SECTION
IN COOPERATION WITH THE
U.S. DEPARTMENT OF TRANSPORTATION
FEDERAL HIGHWAY ADMINISTRATION

SCALE
0 1 2 MILES

NORTH CAROLINA PLANE COORDINATE SYSTEM
LAMBERT CONFORMAL CONIC PROJECTION

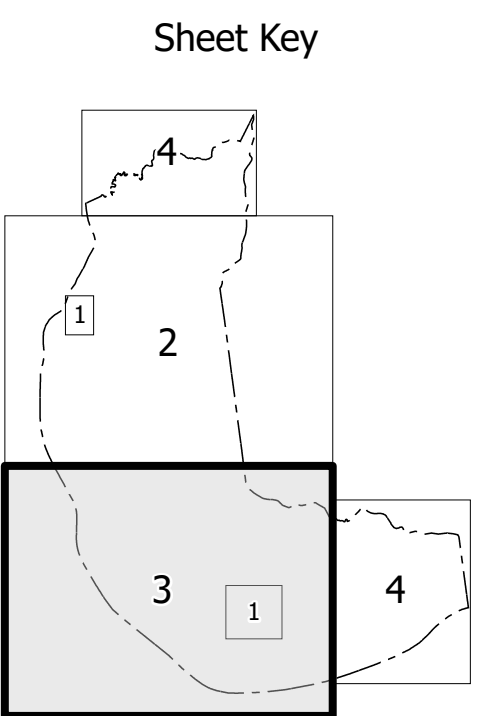
SHEET 2 of 4

DIVISION 1 DISTRICT 3 CHOWAN COUNTY NORTH CAROLINA FIPS 041



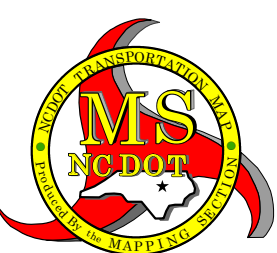
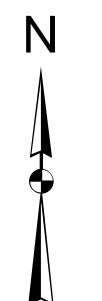
The Mapping Section's goal is to provide the most accurate and current information possible. Map data is compiled from numerous sources with varying degrees of publication and map accuracy standards. As a result, the accuracy, currency and completeness of the data provided will vary. This map includes state-maintained roads and important non-system roads. The information shown on this map was last updated in February 2024. For additional information, visit <https://www.tnstate.gov/travelandmapping>, and click on Data Providers or contact us by phone at 615-335-6460.

COPIES OF THIS MAP ARE AVAILABLE
TO THE PUBLIC AT NOMINAL COST:



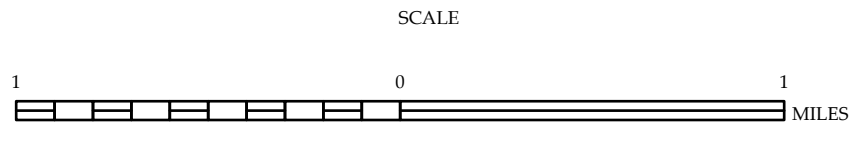
- LEGEND**

| | | | |
|------------|----|----|----------------------------------|
| INTERSTATE | US | NC | Divided Hwy |
| | | | |
| | | | Undivided Hwy |
| | | | BUFF PARKWAY |
| | | | UNPAVED SURFACED ROAD |
| | | | HARD SURFACED ROAD |
| | | | NON-SYSTEM ROAD |
| | | | PROVISIONALLY DRAINAGE ROAD |
| | | | PROJECTED LOCATION |
| | | | INTERSECTION DISTANCE |
| | | | INTERSTATE HIGHWAY |
| | | | U.S. NUMBERED HIGHWAY |
| | | | N.C. NUMBERED HIGHWAY |
| | | | U.S. NUMBERED BIWAY ROUTE |
| | | | N.C. NUMBERED BIWAY ROUTE |
| | | | INTERSTATE INTERCHANGE NUMBER |
| | | | SECONDARY ROAD NUMBER |
| | | | UTILITY LINES |
| | | | RAILROAD LINE |
| | | | RAILROAD STATION |
| | | | INSET AREA |
| | | | STATE LINE |
| | | | COUNTY LINE |
| | | | SMOOTHED URBAN BOUNDARIES |
| | | | JURY LIMITS |
| | | | FERRY ROUTE AND RAMP |
| | | | NARROW CREEK OR STREAM |
| | | | WIDE RIVER OR CREEK |
| | | | RIVER, POND OR LAKE W/ ISLAND |
| | | | DAM OR DAM WITH LEAK |
| | | | WATERFALL |
| | | | SWAMP |
| | | | COMMUNITY |
| | | | CITY/STATE |
| | | | SCHOOL |
| | | | COLLEGE OR UNIVERSITY |
| | | | HOSPITAL |
| | | | COAST GUARD STATION |
| | | | CHURCH |
| | | | CURB WITH CEMETERY |
| | | | CEMETERY |
| | | | POLICE STATION |
| | | | CORRECTION OR PENAL INSTITUTION |
| | | | QUARRY |
| | | | MINE OR PIT |
| | | | GAMBLING OR MAINT. YARD |
| | | | D HIGHWAY DIV. OR DIST. OFFICE |
| | | | RAILROAD POST |
| | | | WEIGH STATION |
| | | | FAIRGROUNDS |
| | | | HISTORICAL SITE |
| | | | POINTS OF INTEREST |
| | | | POST OFFICE |
| | | | STATE FOREST |
| | | | LIGHTHOUSE |
| | | | MOUNTAIN SUMMIT |
| | | | MOUNTAIN GAP |
| | | | OVERLOOK |
| | | | REST AREA |
| | | | WELCOME CTR REST AREA |
| | | | WELCOME CTR REST AREA |
| | | | AIRPORT |
| | | | MILITARY AIRPORT |
| | | | NATIONAL / STATE FOREST BOUNDARY |
| | | | WILDLIFE REFUGE |
| | | | NATIONAL / STATE PARK BOUNDARY |
| | | | GAME LANDS BOUNDARY |
| | | | MILITARY RESERVATION BOUNDARY |
| | | | INDIAN RESERVATION BOUNDARY |



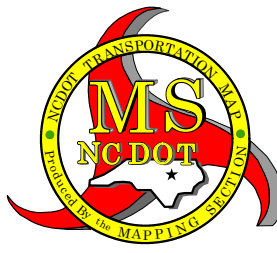
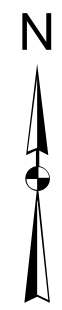
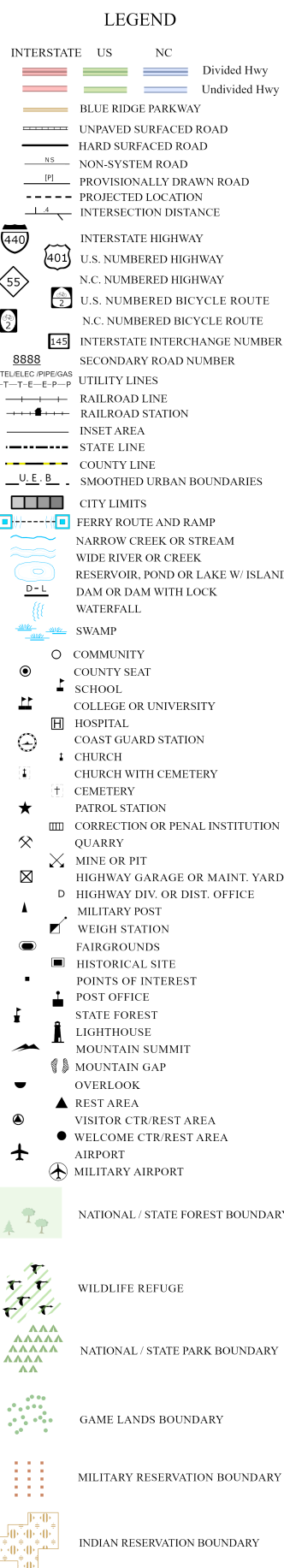
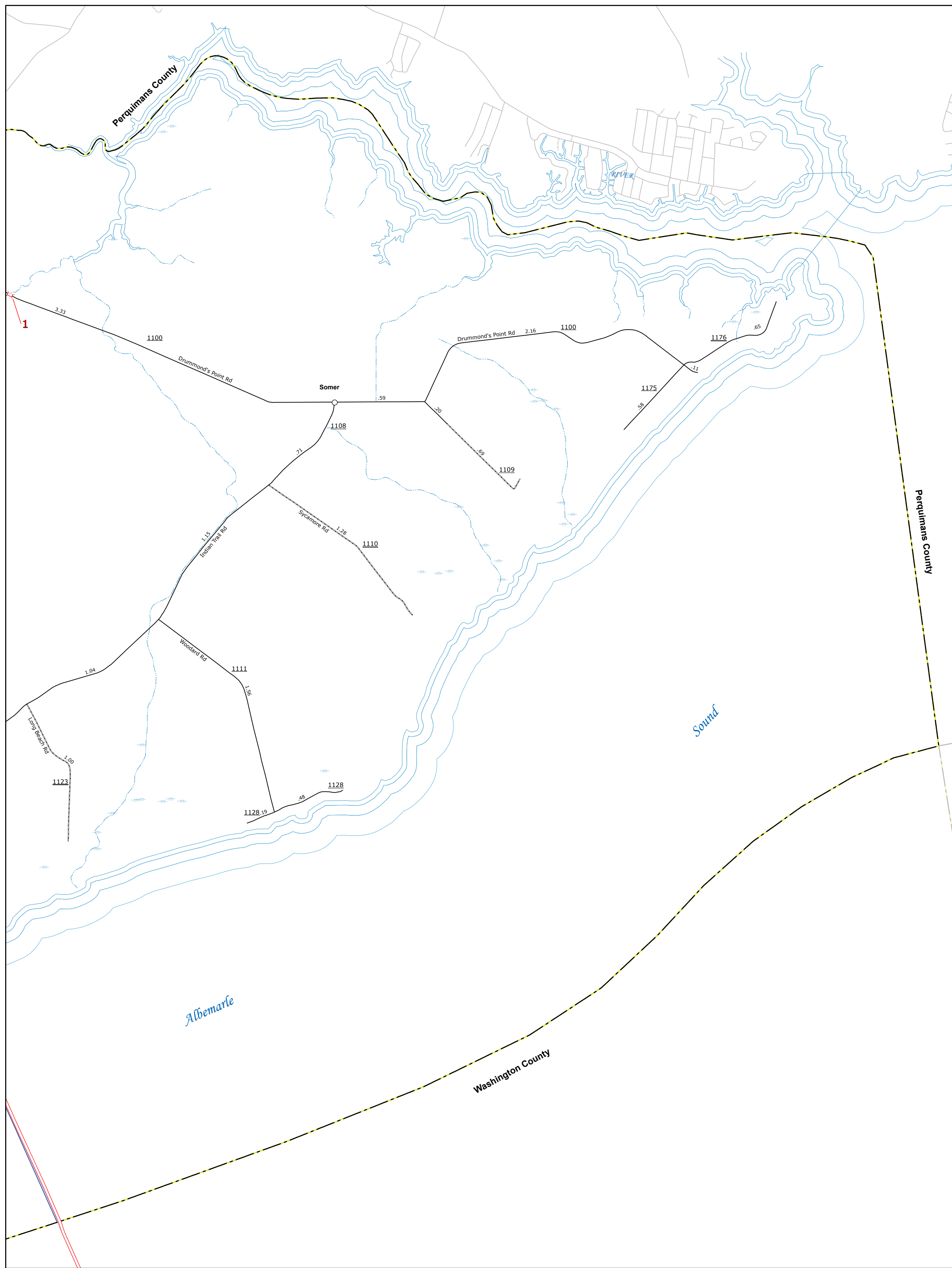
CHOWAN COUNTY NORTH CAROLINA BRIDGE LOCATION MAP-

PREPARED BY THE
NORTH CAROLINA DEPARTMENT OF TRANSPORTATION
OPERATIONS PROGRAM MANAGEMENT UNIT - MAPPING SECTION
IN COOPERATION WITH THE
U.S. DEPARTMENT OF TRANSPORTATION
FEDERAL HIGHWAY ADMINISTRATION



NORTH CAROLINA PLANE COORDINATE SYSTEM
LAMBERT CONFORMAL CONIC PROJECTION

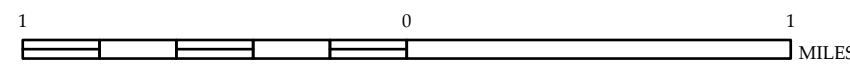
COPIES OF THIS MAP ARE AVAILABLE
TO THE PUBLIC AT NOMINAL COST:



CHOWAN COUNTY NORTH CAROLINA BRIDGE LOCATION MAP

PREPARED BY THE
NORTH CAROLINA DEPARTMENT OF TRANSPORTATION
OPERATIONS PROGRAM MANAGEMENT UNIT - MAPPING SECTION
IN COOPERATION WITH THE
U.S. DEPARTMENT OF TRANSPORTATION
FEDERAL HIGHWAY ADMINISTRATION

SCALING



NORTH CAROLINA PLANE COORDINATE SYSTEM
LAMBERT CONFORMAL CONIC PROJECTION