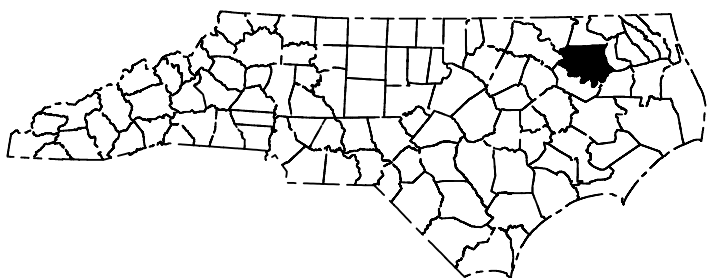
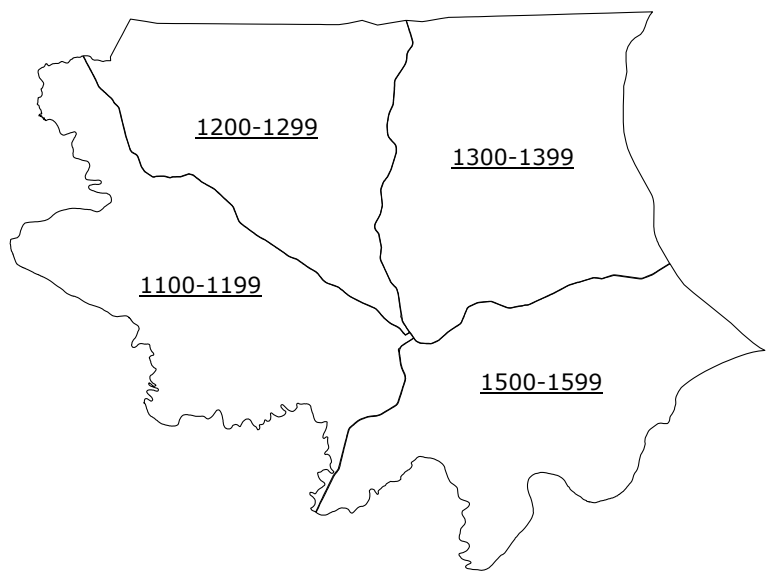
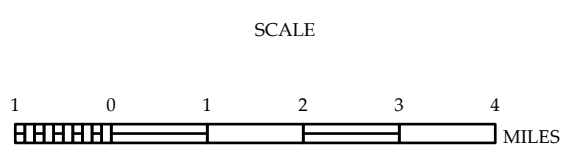
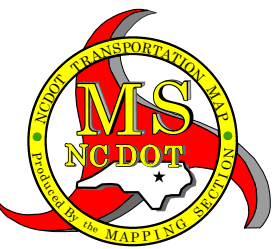


A 3x3 grid of squares. The top row contains squares with numbers 2, 3, and 6. The middle row contains squares with numbers 4, 5, and 6. The bottom row contains squares with numbers 7, 7, and 7. A large white rectangle covers the top-left and middle-left squares (2 and 4). A smaller white rectangle covers the bottom-right square (7).



PREPARED BY THE
NORTH CAROLINA DEPARTMENT OF TRANSPORTATION
OPERATIONS PROGRAM MANAGEMENT UNIT - MAPPING SECTION
IN COOPERATION WITH THE
U.S. DEPARTMENT OF TRANSPORTATION
FEDERAL HIGHWAY ADMINISTRATION



DIVISION 1 DISTRICT 2 **BERTIE COUNTY** NORTH CAROLINA FIPS 015

The Mapping Section's goal is to provide the most accurate and current information possible. Map data is compiled from numerous sources with varying dates of publication and map accuracy standards. As a result, the accuracy, currency and completeness of the data provided will vary. This map includes state-maintained roads and important non-system roads.

The information shown on this map was last updated in February 2024. For additional information, visit <http://www.ncdot.gov/travel/statemapping/> and click on Data Providers or contact us by phone at (919) 835-8480.

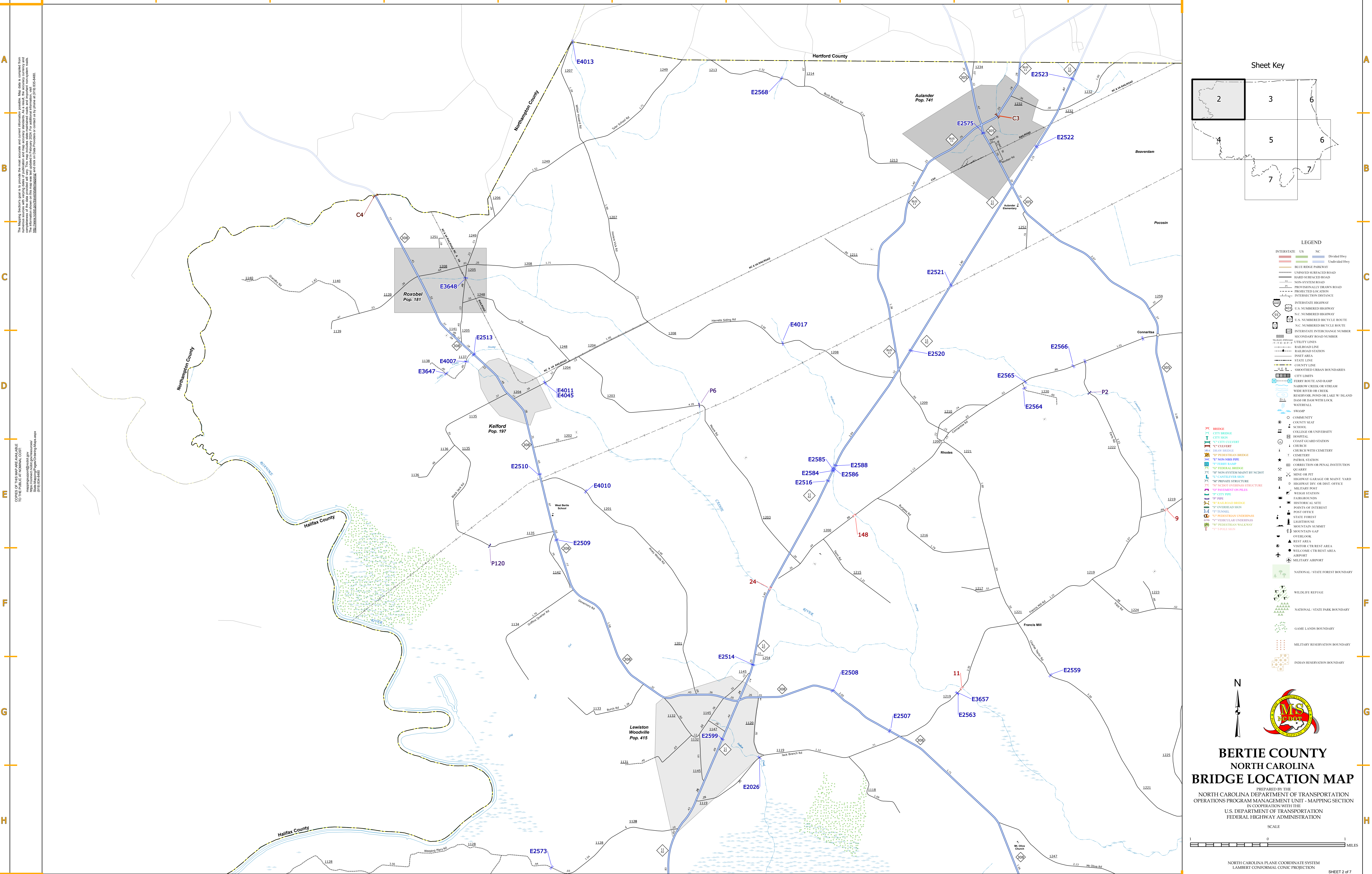
A
B
C
D
E
F
G
H

E

F

G

H



The figure shows a 3x3 grid of maps of the Iberian Peninsula. The regions are numbered 1 through 7. Region 2, located in the northwest, is highlighted with a thick black border. The regions are numbered 1 through 7.

LEGEND

INTERSTATE US	NC	Divided Hwy
		Undivided Hwy
		BLUE RIDGE PARKWAY
		UNPAVED SURFACE ROAD
		HARD SURFACE ROAD
		NO-SYSTEM ROAD
		PERSONALLY MAINTAINED DRAIN ROAD
		PROJECTED LOCATION
		INTERSECTION DISTANCE
		INTERSTATE HIGHWAY
		U.S. NUMBERED HIGHWAY
		N.C. NUMBERED BICYCLE ROUTE
		N.C. NUMBERED BIKEWAY
		INTERSTATE INTERCHANGE NUMBER
		U.S. ROADWAY ROAD NUMBER
		TRAIL/LINE
		RAILROAD STATION
		INSET AREA
		STATE LINE
		COUNTY LINE
		SMOOTHED RIVER BOUNDARIES
		CITY LIMITS
		FERRY ROUTE OR STRAM
		NARROW CREEK OR RIVER
		WIDE RIVER OR CREEK
		RESERVOIR, POND OR LAKE W/ ISLAND
		DAM OF DAM WITH LOCK
		NATURAL
		SWAMP
		COMMUNITY
		COUNTY SEAT
		SCHOOL
		COLLEGE OR UNIVERSITY
		HOSPITAL
		COUNTY GOV. BUILDING
		CHURCH
		CHURCH W/ CEMETERY
		CEMETERY
		PATROL STATION
		CORRECTION OR PENAL INSTITUTION
		QUARRY
		MINE OR PIT
		HIGHWAY GARAGE OR MAINT. YARD
		HIGHWAY DIV. OR DIST. OFFICE
		MILITARY POST
		WEIGH STATION
		FARMS/BOARDS
		HISTORICAL SITE
		POINTS OF INTEREST
		POST OFFICE
		STATE FOREST
		LIGHTHOUSE
		MOUNTAIN SUMMIT
		MOUNTAIN GAP
		OVERLOOK
		REST AREA
		VISITOR CENTER AREA
		WELCOME CENTER AREA
		AIRPORT
		MILITARY AIRPORT

NATIONAL / STATE FOREST BOUNDARY

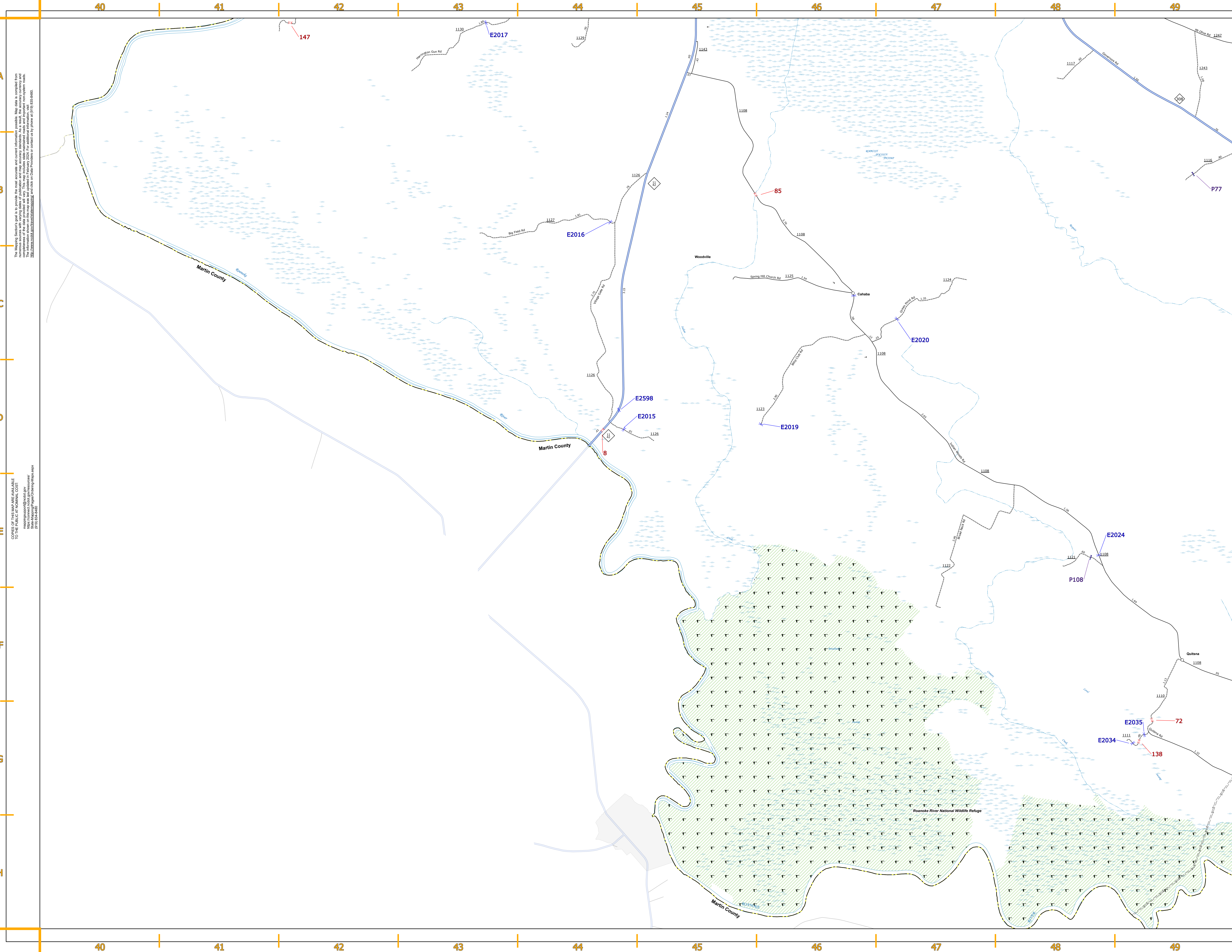


PREPARED BY THE
NORTH CAROLINA DEPARTMENT OF TRANSPORTATION
OPERATIONS PROGRAM MANAGEMENT UNIT - MAPPING SECTION
IN COOPERATION WITH THE
U.S. DEPARTMENT OF TRANSPORTATION
FEDERAL HIGHWAY ADMINISTRATION

DIVISION 1 DISTRICT 2 BERTIE COUNTY NORTH CAROLINA FIPS 0

COPIES OF THIS MAP ARE AVAILABLE
TO THE PUBLIC AT NOMINAL COST:





The map is a computer-generated map and is not a survey. It is intended to provide a general overview of the location of bridges in Bertie County, North Carolina. It is not intended to be used for legal purposes. The map is based on data from the North Carolina Department of Transportation and the U.S. Department of Transportation. The map is not a substitute for a survey. The map is not a substitute for a survey. The map is not a substitute for a survey.

COPIES OF THIS MAP ARE AVAILABLE TO THE PUBLIC AT NO CHARGE. The information on this map was last updated in February 2024. For additional information, visit <https://www.ncdot.gov/transportation/infrastructure/bridges> or call 1-800-368-3840.

Sheet Key

LEGEND

INTERSTATE	US	NC	Divided Hwy
			Undivided Hwy
			Blue Ridge Parkway
			Unpaved Surface Road
			Hard Surface Road
			Non-System Road
			Provisionally Drawn Road
			Projected Location
			Intersection Distance
			Interstate Highway
			U.S. Numbered Highway
			N.C. Numbered Highway
			U.S. Numbered Bicycle Route
			N.C. Numbered Bicycle Route
			Interstate Interchange Number
			Secondary Road Number
			Utility Lines
			Railroad Line
			Railroad Station
			Inset Area
			State Line
			County Line
			Smoothed Urban Boundaries
			City Limits
			Ferry Route and Ramp
			Narrow Creek or Stream
			Wide River or Creek
			Reservoir, Pond or Lake w/ Island
			Dam or Dam with Lock
			Natural
			Swamp
			Community
			County Seat
			School
			College or University
			Coast Guard Station
			Hospital
			Church
			Church with Cemetery
			Cemetery
			Patrol Station
			Correction or Penal Institution
			Square
			Mini or Pit
			Highway Garage or Maint. Yard
			Highway Det. or Rest Office
			Military Post
			Weight Station
			Paraglider Site
			Historical Site
			Points of Interest
			Post Office
			State Forest
			Overlook
			Mountain Summit
			Mountain Gap
			Overlook
			Rest Area
			Visitor CTR/Rest Area
			Welcome CTR/Rest Area
			Airport
			Military Airport
			National / State Forest Boundary
			Wildlife Refuge
			National / State Park Boundary
			Game Lands Boundary
			Military Reservation Boundary
			Indian Reservation Boundary

BRIDGE

CITY BRIDGE

CITY SIGN

CITY CULVERT

CITY CULVERT

DRY BRIDGE

PEDESTRIAN BRIDGE

NON-NBS PIPE

FERRY RAMP

FEDERAL BRIDGE

NON-SYSTEM MAINT BY NCDOT

CANTILEVER BRIDGE

PRIVATE STRUCTURE

NCDOT OVERPASS STRUCTURE

PIPE

CITY PIPE

PIPE

RAILROAD BRIDGE

OVERHEAD SIGN

TUNNEL

PEDESTRIAN UNDERPASS

CIRCULAR UNDERPASS

PEDESTRIAN WALKWAY

TABLE SIGN

N

BERTIE COUNTY
NORTH CAROLINA
BRIDGE LOCATION MAP

PREPARED BY THE
NORTH CAROLINA DEPARTMENT OF TRANSPORTATION
OPERATIONS PROGRAM MANAGEMENT UNIT - MAPPING SECTION
IN COOPERATION WITH THE
U.S. DEPARTMENT OF TRANSPORTATION
FEDERAL HIGHWAY ADMINISTRATION

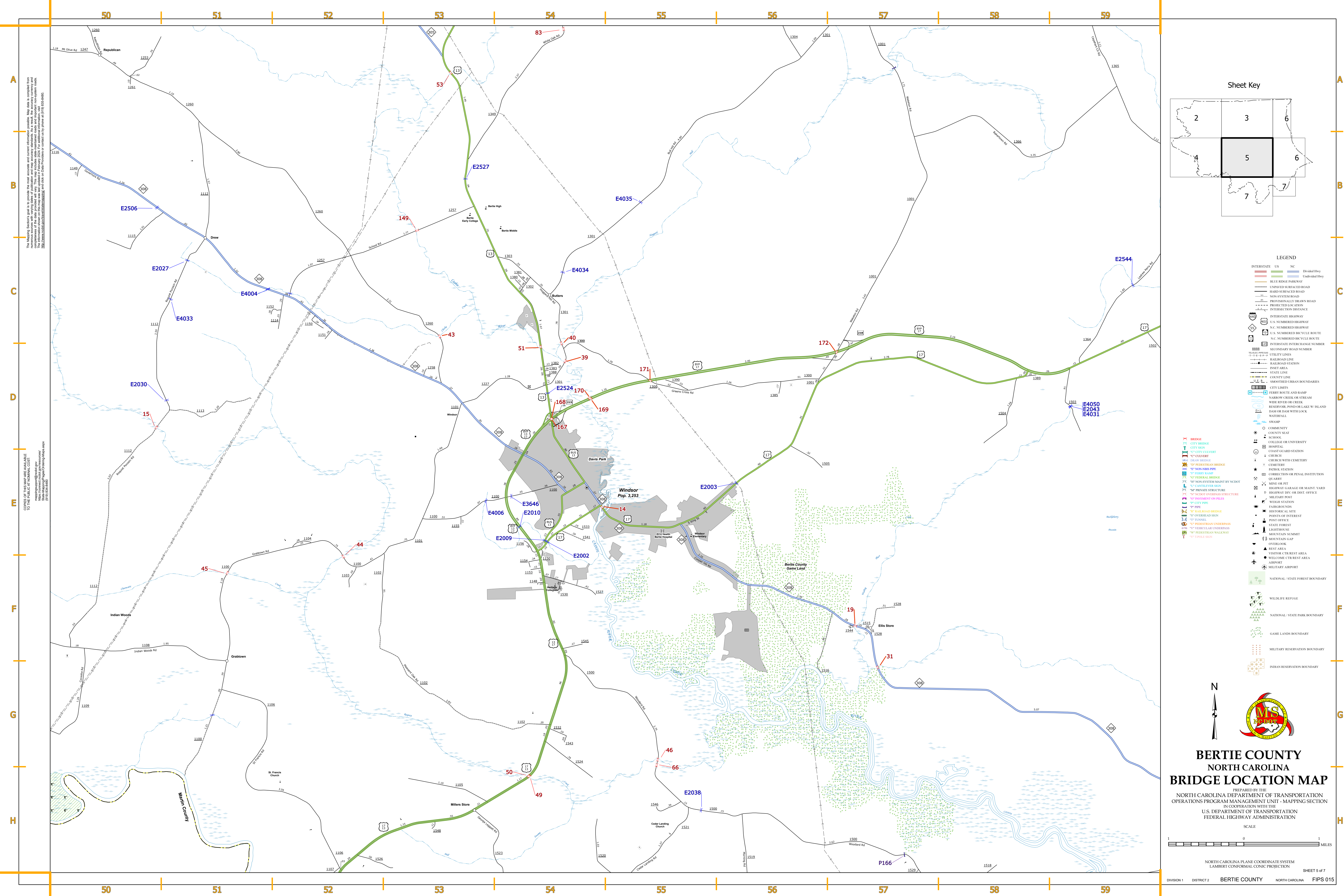
SCALE

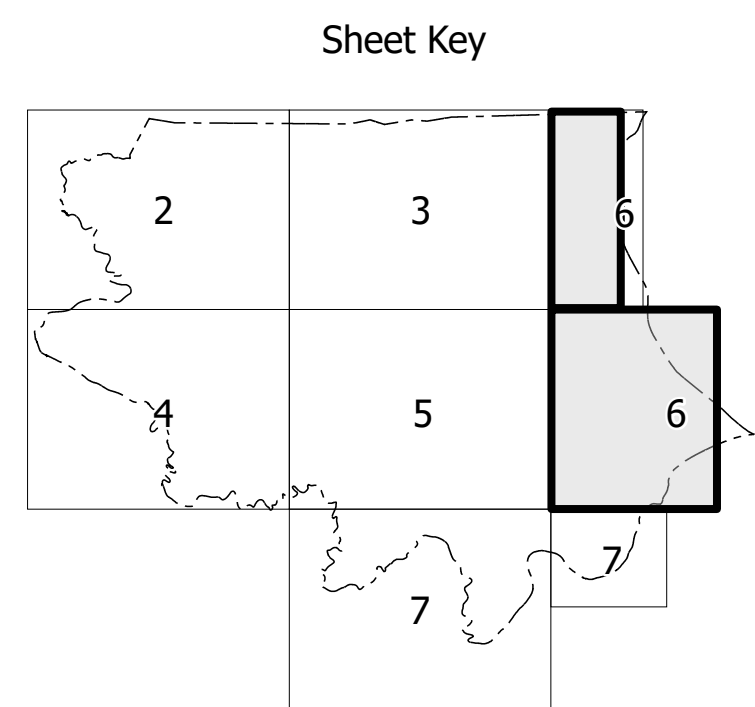
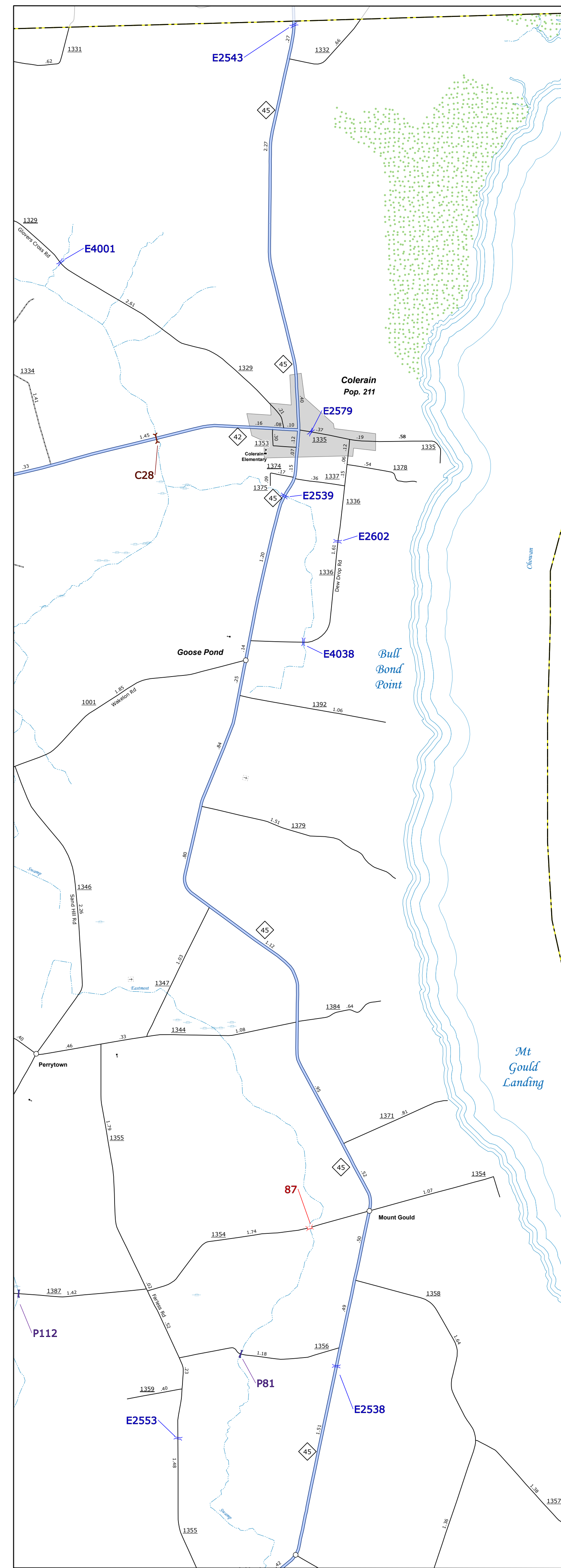
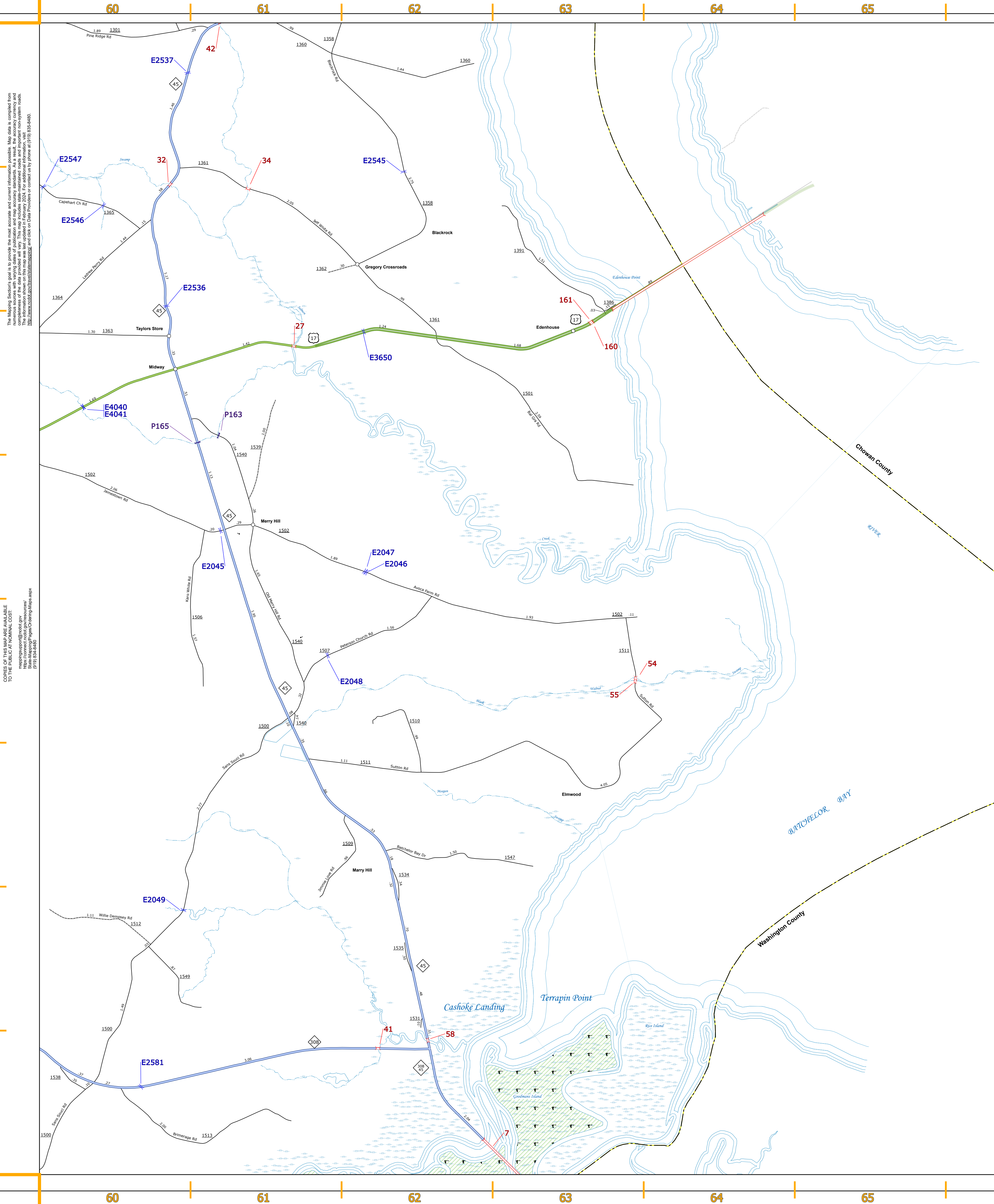
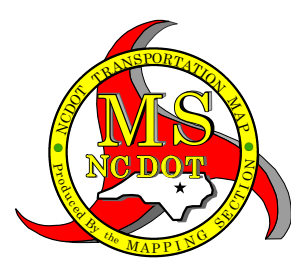
0 1 2 MILES

NORTH CAROLINA PLANE COORDINATE SYSTEM
LAMBERT CONFORMAL CONIC PROJECTION

SHEET 4 of 7

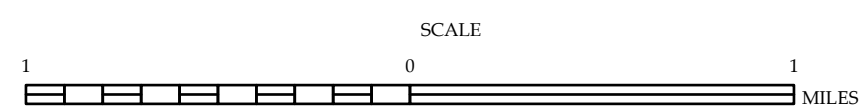
DIVISION 1 DISTRICT 2 BERTIE COUNTY NORTH CAROLINA FIPS 015



[illegible]

BERTIE COUNTY NORTH CAROLINA BRIDGE LOCATION MAP

PREPARED BY THE
NORTH CAROLINA DEPARTMENT OF TRANSPORTATION
OPERATIONS PROGRAM MANAGEMENT UNIT - MAPPING SECTION
IN COOPERATION WITH THE
U.S. DEPARTMENT OF TRANSPORTATION
FEDERAL HIGHWAY ADMINISTRATION



NORTH CAROLINA PLANE COORDINATE SYSTEM
LAMBERT CONFORMAL CONIC PROJECTION

SHEET 6 OF 7

DIVISION 1 DISTRICT 2 BERTIE COUNTY NORTH CAROLINA FIPS 015

A
B
C
D
E
F
G
H

E

F

G

H



- E
F
C
H



1

1



1

1

1