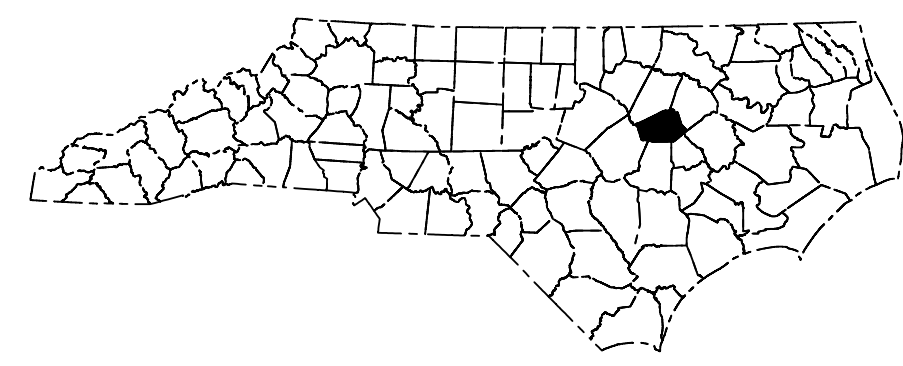
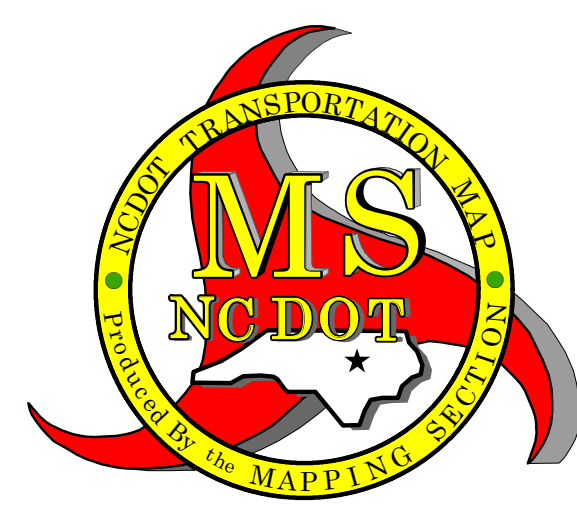
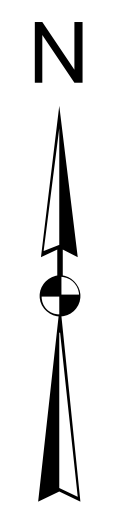


# WILSON COUNTY NORTH CAROLINA BRIDGE LOCATION MAP

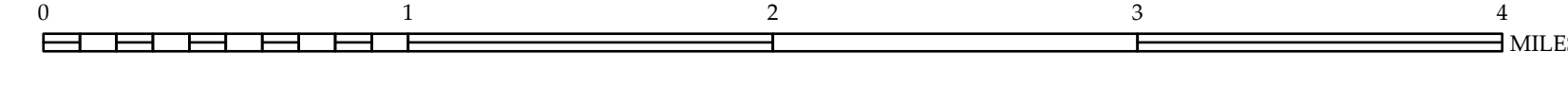


PREPARED BY THE  
NORTH CAROLINA DEPARTMENT OF TRANSPORTATION  
OPERATIONS PROGRAM MANAGEMENT UNIT - MAPPING SECTION  
IN COOPERATION WITH THE  
U.S. DEPARTMENT OF TRANSPORTATION  
FEDERAL HIGHWAY ADMINISTRATION

1300-1399 1400-1499  
1800-1899

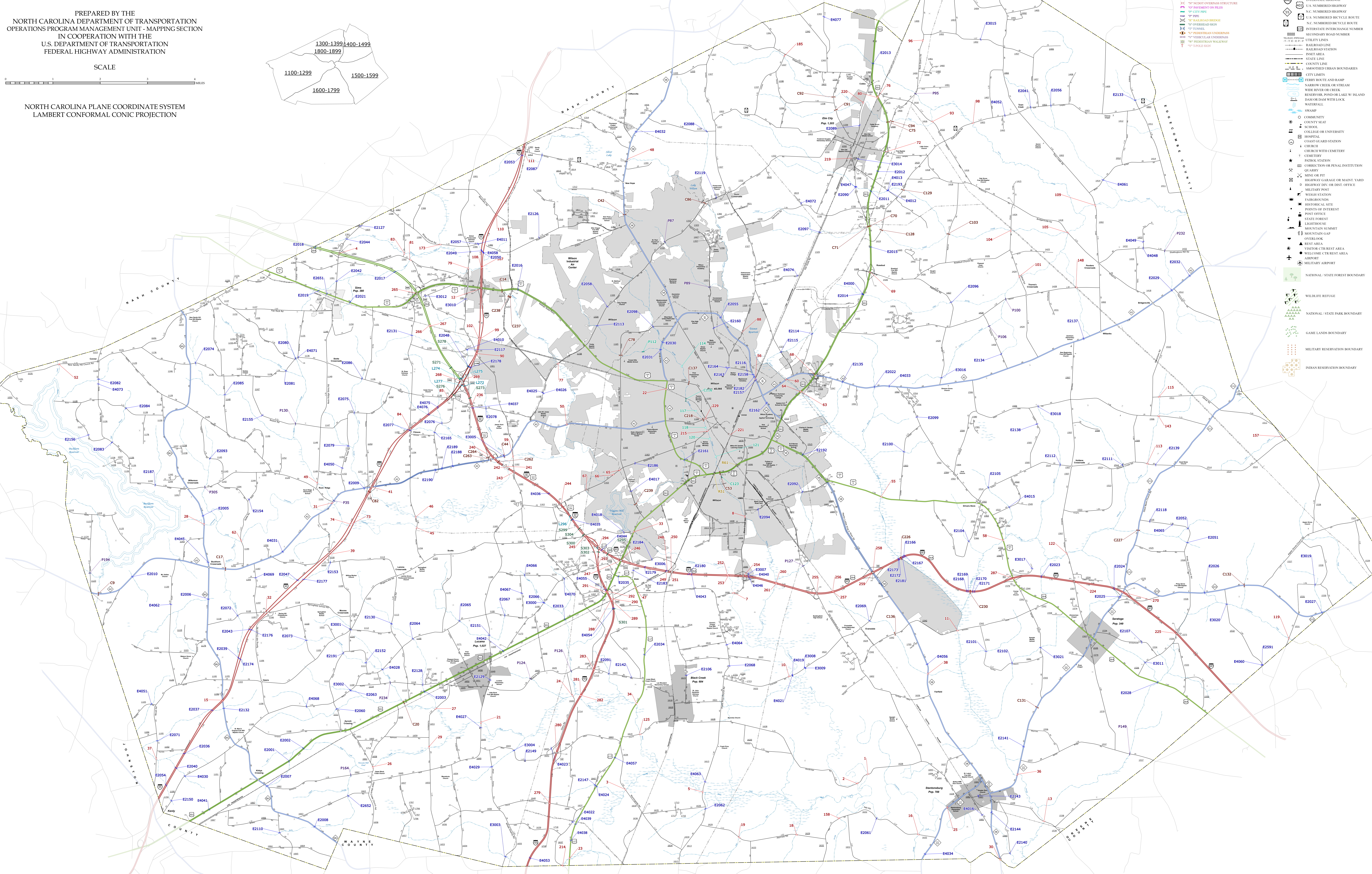
1100-1299 1500-1599  
1600-1799

SCALE



NORTH CAROLINA PLANE COORDINATE SYSTEM  
LAMBERT CONFORMAL CONIC PROJECTION

- ### LEGEND
- INTERSTATE US NC
  - Divided Hwy
  - Undivided Hwy
  - BLUE RIDGE PARKWAY
  - UNIMPROVED GRAVEL ROAD
  - HARD SURFACE ROAD
  - NON-SYSTEM ROAD
  - PROVISIONAL GRAVEL ROAD
  - PROPOSED LOCATION
  - INTERSECTION DISTANCE
  - INTERSTATE HIGHWAY
  - U.S. NUMBERED HIGHWAY
  - N.C. NUMBERED HIGHWAY
  - U.S. NUMBERED BICYCLE ROUTE
  - N.C. NUMBERED BICYCLE ROUTE
  - INTERSTATE INTERCHANGE NUMBER
  - SECONDARY ROAD NUMBER
  - UTILITY LINES
  - RAILROAD LINE
  - RAILROAD STATION
  - INSET AREA
  - STATE LINE
  - COUNTY LINE
  - SMOOTHED URBAN BOUNDARIES
  - CITY LIMITS
  - FERRY ROUTE AND RAMP
  - NARROW CREEK OR STREAM
  - WIDE RIVER OR CREEK
  - RESERVOIR, POND OR LAKE W/ ISLAND
  - DAM OR DAM WITH LOCK
  - WATERFALL
  - SWAMP
  - COMMUNITY
  - COUNTY SEAT
  - SCHOOL
  - COLLEGE OR UNIVERSITY
  - HOSPITAL
  - COAST GUARD STATION
  - CHURCH
  - CHURCH WITH CEMETERY
  - CEMETERY
  - PARKING STATION
  - CORRECTION OR PENAL INSTITUTION
  - QUARRY
  - MINE OR PIT
  - HIGHWAY GARAGE OR MAINT. YARD
  - HIGHWAY DIV. OR DIST. OFFICE
  - MILITARY POST
  - WEIGH STATION
  - FARM/BUSINESS
  - HISTORICAL SITE
  - POINTS OF INTEREST
  - POST OFFICE
  - STATE FOREST
  - LIGHTHOUSE
  - MOUNTAIN SUMMIT
  - MOUNTAIN GAP
  - OVERLOOK
  - REST AREA
  - VISITOR CENTER AREA
  - WELCOME CENTER AREA
  - AIRPORT
  - MILITARY AIRPORT
  - NATIONAL STATE FOREST BOUNDARY
  - WILDLIFE REFUGE
  - NATIONAL STATE PARK BOUNDARY
  - GAME LANDS BOUNDARY
  - MILITARY RESERVATION BOUNDARY
  - INDIAN RESERVATION BOUNDARY



COPIES OF THIS MAP ARE AVAILABLE TO THE PUBLIC AT THE OFFICE OF THE STATE ARCHIVIST, 100 EAST COLLETT STREET, RALEIGH, NC 27603. FOR MORE INFORMATION, CONTACT THE STATE ARCHIVIST AT (919) 733-2000.

© 2010 NCDOT. This document is the property of the North Carolina Department of Transportation. It is to be used only for the purposes for which it was prepared. No part of this document may be reproduced or transmitted in any form or by any means, electronic or mechanical, including photocopying, recording, or by any information storage and retrieval system, without the prior written permission of the North Carolina Department of Transportation. The North Carolina Department of Transportation is an Equal Opportunity Employer. Minorities and women are encouraged to apply.