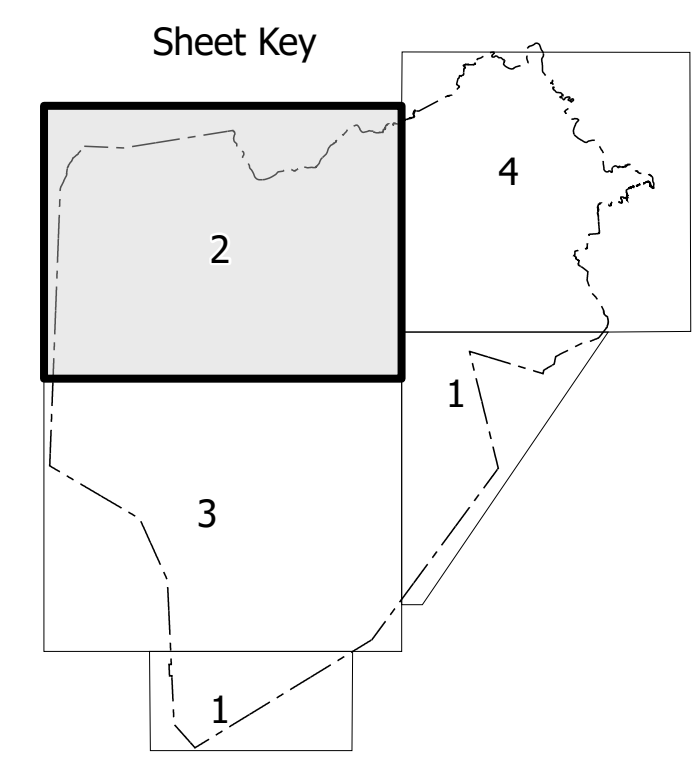
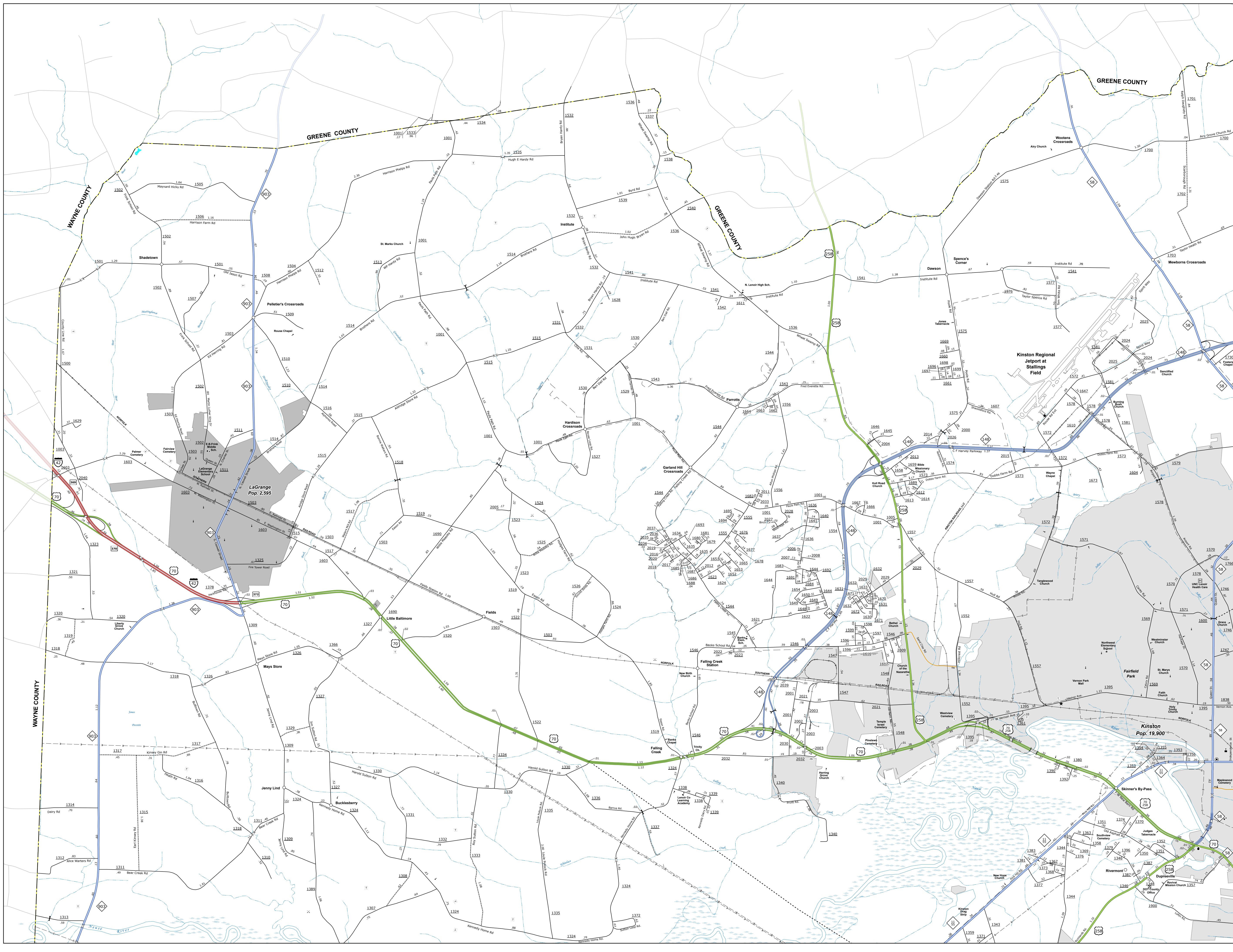


THIS IS A PRELIMINARY MAP. THE MAP IS SUBJECT TO CHANGE WITHOUT NOTICE. THE STATE OF NORTH CAROLINA DEPARTMENT OF TRANSPORTATION OPERATIONS PROGRAM MANAGEMENT UNIT - MAPPING SECTION IS NOT RESPONSIBLE FOR ANY ERRORS OR OMISSIONS. THE USER ASSUMES ALL LIABILITY FOR ANY DAMAGE OR INJURY RESULTING FROM THE USE OF THIS MAP. THE INFORMATION ON THIS MAP WAS OBTAINED FROM THE FOLLOWING SOURCES: AERIAL PHOTOGRAPHS, GROUND SURVEYS, AND OTHER AVAILABLE DATA. THE INFORMATION ON THIS MAP IS NOT GUARANTEED TO BE 100% ACCURATE. THE INFORMATION ON THIS MAP IS NOT TO BE USED FOR ANY PURPOSE OTHER THAN THAT FOR WHICH IT WAS DESIGNED. THE INFORMATION ON THIS MAP IS NOT TO BE USED FOR ANY PURPOSE OTHER THAN THAT FOR WHICH IT WAS DESIGNED.

CONTACT US FOR MORE INFORMATION OR TO PURCHASE A PRINTED COPY OF THIS MAP. CONTACT US AT: (919) 874-4444. CONTACT US AT: (919) 874-4444.

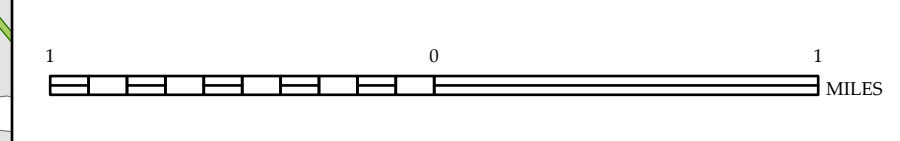


- LEGEND**
- INTERSTATE US
 - STATE HIGHWAY
 - UNPAVED SURFACED ROAD
 - HARD SURFACED ROAD
 - NON-SYSTEM ROAD
 - PROFESSIONALLY DRAWN ROAD
 - PROFESSIONALLY DRAWN BRIDGE
 - STANDARD ROAD BRIDGE
 - RAILROAD BRIDGE
 - DRAW SPAN ON BRIDGE
 - PEDESTRIAN BRIDGE
 - PEDESTRIAN WALKWAY
 - VEHICLE UNDERPASS
 - TUNNEL
 - CULVERT
 - PIPE
 - INTERSTATE HIGHWAY
 - U.S. NUMBERED HIGHWAY
 - N.C. NUMBERED HIGHWAY
 - U.S. NUMBERED BICYCLE ROUTE
 - N.C. NUMBERED BICYCLE ROUTE
 - INTERSTATE INTERCHANGE NUMBER
 - SECONDARY ROAD NUMBER
 - UTILITY LINE
 - RAILROAD LINE
 - RAILROAD BRIDGE
 - INSURANCE AREA
 - STATE LINE
 - COUNTY LINE
 - SMOOTHED URBAN BOUNDARIES
 - CITY LIMITS
 - FERRY ROUTE AND RAMP
 - NARROW CREEK OR STREAM
 - WIDE RIVER OR CREEK
 - RESERVOIR, POND OR LAKE W/ ISLAND
 - DAM OR DIAM WITH LOCK
 - WATERFALL
 - SWAMP
 - CORPORATE
 - COUNTY SEAL
 - SCHOOL
 - COLLEGE OR UNIVERSITY
 - HOSPITAL
 - COAST GUARD STATION
 - CHEMICAL
 - CHEMIST WITH CEMETERY
 - PATROL STATION
 - CORRECTION OR PENAL INSTITUTION
 - SQUARE
 - MINE OR PIT
 - INDUSTRIAL GARAGE OR MAIN YARD
 - HIGHWAY DIV. OR DIST OFFICE
 - MILITARY POST
 - WATER STATION
 - FARMS/POUNDS
 - HISTORICAL SITE
 - POINTS OF INTEREST
 - POST OFFICE
 - STATE FOREST
 - LIGHTHOUSE
 - MOUNTAIN SUMMIT
 - MOUNTAIN GAP
 - OVERLOOK
 - REST AREA
 - VISITOR CENTER REST AREA
 - WELCOME CENTER REST AREA
 - AIRPORT
 - MILITARY AIRPORT
 - NATIONAL STATE FOREST BOUNDARY
 - WILDLIFE REFUGE
 - NATIONAL STATE PARK BOUNDARY
 - GAME LANDS BOUNDARY
 - MILITARY RESERVATION BOUNDARY
 - INDIAN RESERVATION BOUNDARY



**LENOIR COUNTY
NORTH CAROLINA**

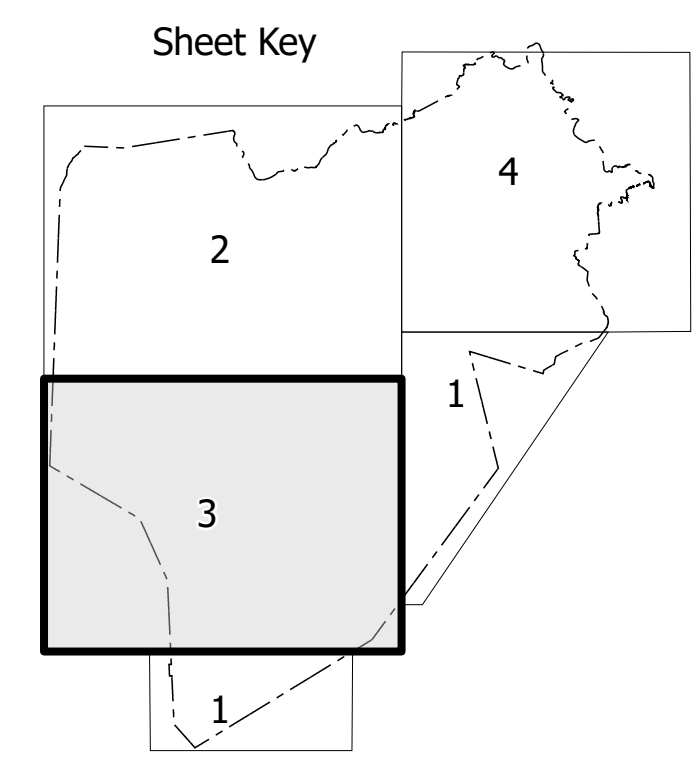
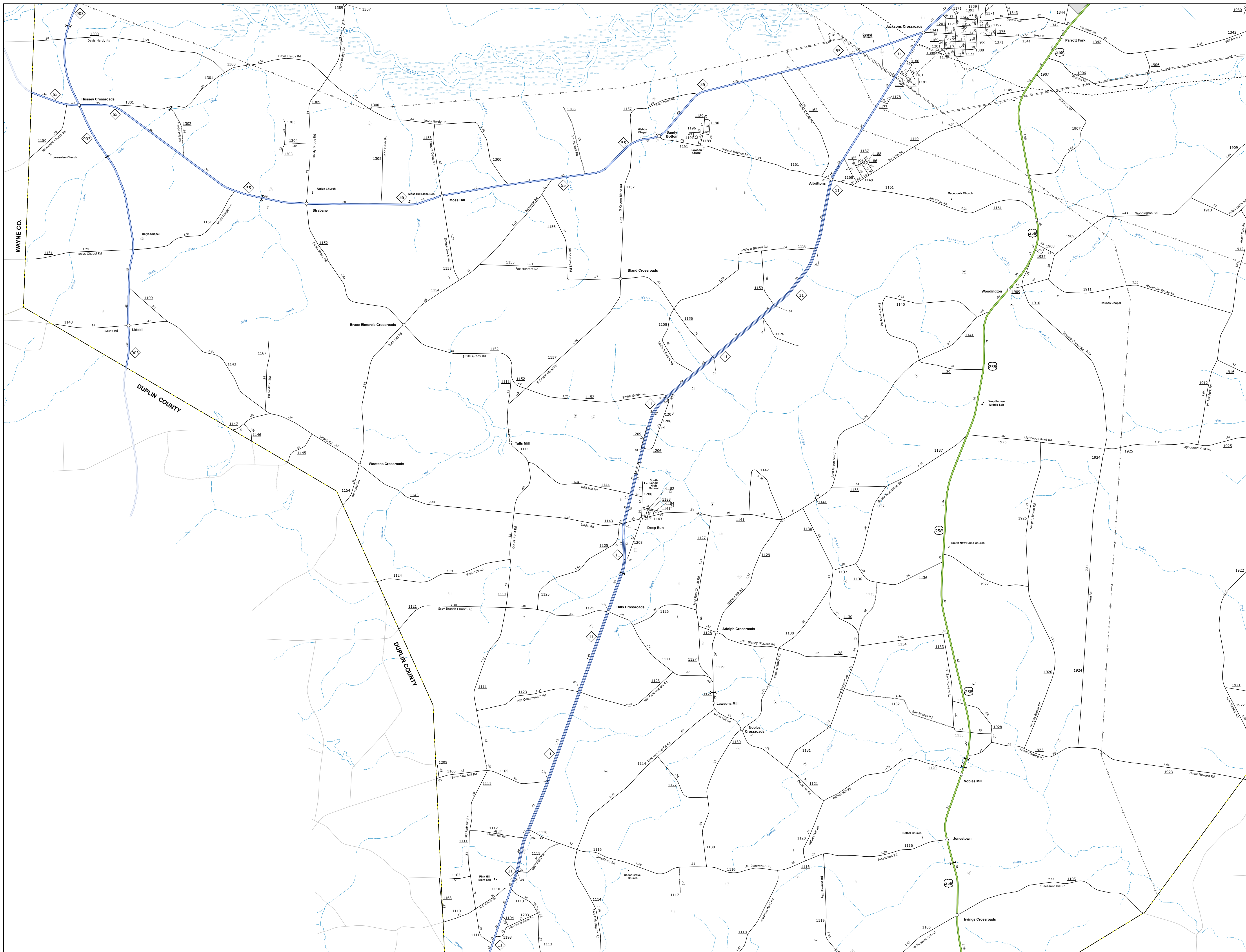
PREPARED BY THE
NORTH CAROLINA DEPARTMENT OF TRANSPORTATION
OPERATIONS PROGRAM MANAGEMENT UNIT - MAPPING SECTION
IN COOPERATION WITH THE
U.S. DEPARTMENT OF TRANSPORTATION
FEDERAL HIGHWAY ADMINISTRATION



NORTH CAROLINA PLANE COORDINATE SYSTEM
LAMBERT CONFORMAL CONIC PROJECTION

STATE OF NORTH CAROLINA, The State Engineer, by the undersigned, State Engineer, do hereby certify that the above described map was prepared by the State Engineer's Office, and that the same is a true and correct copy of the original map on file in the State Engineer's Office, and that the same is a true and correct copy of the original map on file in the State Engineer's Office, and that the same is a true and correct copy of the original map on file in the State Engineer's Office.

CONTRACT NO. 100-2018-0001, THE STATE ENGINEER, BY THE UNDERSIGNED, STATE ENGINEER, DO HEREBY CERTIFY THAT THE ABOVE DESCRIBED MAP WAS PREPARED BY THE STATE ENGINEER'S OFFICE, AND THAT THE SAME IS A TRUE AND CORRECT COPY OF THE ORIGINAL MAP ON FILE IN THE STATE ENGINEER'S OFFICE, AND THAT THE SAME IS A TRUE AND CORRECT COPY OF THE ORIGINAL MAP ON FILE IN THE STATE ENGINEER'S OFFICE, AND THAT THE SAME IS A TRUE AND CORRECT COPY OF THE ORIGINAL MAP ON FILE IN THE STATE ENGINEER'S OFFICE.

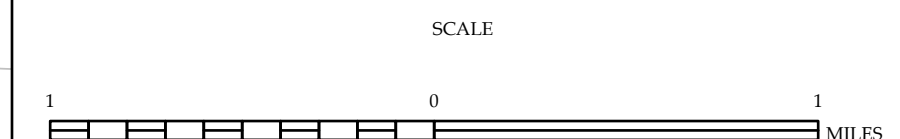


- LEGEND**
- INTERSTATE US
 - INTERSTATE NC
 - Divided Hwy
 - Undivided Hwy
 - BELE BRIDGE REMOVAL
 - UNPAVED SURFACED ROAD
 - HARD SURFACED ROAD
 - NON-SYSTEM ROAD
 - PROVISIONALLY DRAWN ROAD
 - PROPOSED ROAD
 - INTERSECTION ISLAND
 - STANDARD ROAD BRIDGE
 - RAILROAD BRIDGE
 - DRAW SPAN ON BRIDGE
 - PEDESTRIAN BRIDGE
 - PEDESTRIAN WALKWAY
 - PEDESTRIAN UNDERPASS
 - VEHICULAR UNDERPASS
 - TUNNEL
 - CULVERT
 - PIPE
 - INTERSTATE HIGHWAY
 - U.S. NUMBERED HIGHWAY
 - N.C. NUMBERED HIGHWAY
 - U.S. NUMBERED BI-CYCLE ROUTE
 - N.C. NUMBERED BI-CYCLE ROUTE
 - INTERSTATE INTERCHANGE NUMBER
 - SECONDARY ROAD NUMBER
 - UTILITY LINE
 - RAILROAD LINE
 - RAILROAD STATION
 - INSURANCE
 - STATE LINE
 - COUNTY LINE
 - SMOOTHED URBAN BOUNDARIES
 - CITY LIMITS
 - FERRY ROUTE AND RAMP
 - NARROW CREEK OR STREAM
 - WIDE RIVER OR CREEK
 - RESERVOIR, POND OR LAKE W/ ISLAND
 - DAM OR DIAM WITH LOCK
 - WATERFALL
 - SWAMP
 - COMMUNITY
 - COUNTY SEAL
 - SCHOOL
 - COLLEGE OR UNIVERSITY
 - HOSPITAL
 - COAST GUARD STATION
 - CHURCH
 - CEMETERY WITH CEMETERY
 - PATROL STATION
 - CORRECTION OR PENAL INSTITUTION
 - SCIENCE
 - MUSE OR PIT
 - INDUSTRIAL GARAGE OR MAINT. YARD
 - HIGHWAY DIV. OR DIST. OFFICE
 - MILITARY POST
 - WATER STATION
 - FARMLANDS
 - HISTORICAL SITE
 - POINTS OF INTEREST
 - POST OFFICE
 - STATE FOREST
 - LIGHTHOUSE
 - MOUNTAIN SUMMIT
 - MOUNTAIN GAP
 - OVERLOOK
 - REST AREA
 - VISITOR CENTER AREA
 - WELCOME CENTER AREA
 - AIRPORT
 - MILITARY AIRPORT
 - NATIONAL STATE FOREST BOUNDARY
 - WILDLIFE REFUGE
 - NATIONAL STATE PARK BOUNDARY
 - GAME LANDS BOUNDARY
 - MILITARY RESERVATION BOUNDARY
 - INDIAN RESERVATION BOUNDARY



**LENOIR COUNTY
NORTH CAROLINA**

PREPARED BY THE
NORTH CAROLINA DEPARTMENT OF TRANSPORTATION
OPERATIONS PROGRAM MANAGEMENT UNIT - MAPPING SECTION
IN COOPERATION WITH THE
U.S. DEPARTMENT OF TRANSPORTATION
FEDERAL HIGHWAY ADMINISTRATION



NORTH CAROLINA PLANE COORDINATE SYSTEM
LAMBERT CONFORMAL CONIC PROJECTION

