

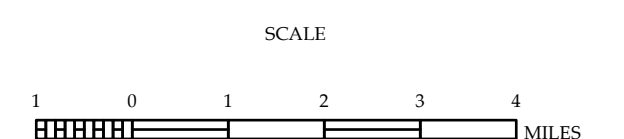
LEGEND

- INTERSTATE US NC Divided Hwy Undivided Hwy
BLUE RIDGE PARKWAY
UNPAVED SURFACED ROAD
HARD SURFACED ROAD
NON-SYSTEM ROAD
PROFESSIONALLY DRAWN ROAD
PROJECTED LOCATION
INTERSECTION DISTANCE
STANDARD ROAD BRIDGE
RAILROAD BRIDGE
DRAW SPAN ON BRIDGE
PEDESTRIAN BRIDGE
PEDESTRIAN WALKWAY
PEDESTRIAN UNDERPASS
VEHICULAR UNDERPASS
TUNNEL
CULVERT
PIPE
INTERSTATE HIGHWAY
U.S. NUMBERED HIGHWAY
N.C. NUMBERED HIGHWAY
U.S. NUMBERED BI-CYCLE ROUTE
N.C. NUMBERED BI-CYCLE ROUTE
INTERSTATE INTERCHANGE NUMBER
SECONDARY ROAD NUMBER
UTILITY LINES
RAILROAD LINE
RAILROAD STATION
INSLET AREA
STATE LINE
COUNTY LINE
CITY LIMITS
FERRY ROUTE
NARROW CREEK OR STREAM
WIDE RIVER OR CREEK
RESERVOIR, POND OR LAKE W/ ISLAND
DAM OR DAM WITH LOCK
WATERFALL
SWAMP
COMMUNITY
COUNTY SEAT
SCHOOL
COLLEGE OR UNIVERSITY
HOSPITAL
COAST GUARD STATION
CHURCH
CHURCH WITH CEMETERY
CEMETERY
PATROL STATION
CORRECTION OR PENAL INSTITUTION
QUARRY
MINE OR PIT
HIGHWAY GARAGE OR MAINT. YARD
HIGHWAY DIV. OR DIST. OFFICE
MILITARY POST
WEIGH STATION
FAIRGROUNDS
HISTORICAL SITE
POINTS OF INTEREST
LIGHTHOUSE
MOUNTAIN SUMMIT
OVERLOOK
REST AREA
VISITOR CENTER AREA
WELCOME CENTER AREA
AIRBORNE
MILITARY AIRPORT
HELIPORT
NATIONAL / STATE FOREST BOUNDARY
WILDLIFE REFUGE
NATIONAL / STATE PARK BOUNDARY
GAME LANDS BOUNDARY
MILITARY RESERVATION BOUNDARY
INDIAN RESERVATION BOUNDARY



MONTGOMERY COUNTY NORTH CAROLINA

PREPARED BY THE NORTH CAROLINA DEPARTMENT OF TRANSPORTATION OPERATIONS PROGRAM MANAGEMENT UNIT - MAPPING SECTION IN COOPERATION WITH THE U.S. DEPARTMENT OF TRANSPORTATION FEDERAL HIGHWAY ADMINISTRATION



NORTH CAROLINA PLANE COORDINATE SYSTEM LAMBERT CONFORMAL CONIC PROJECTION

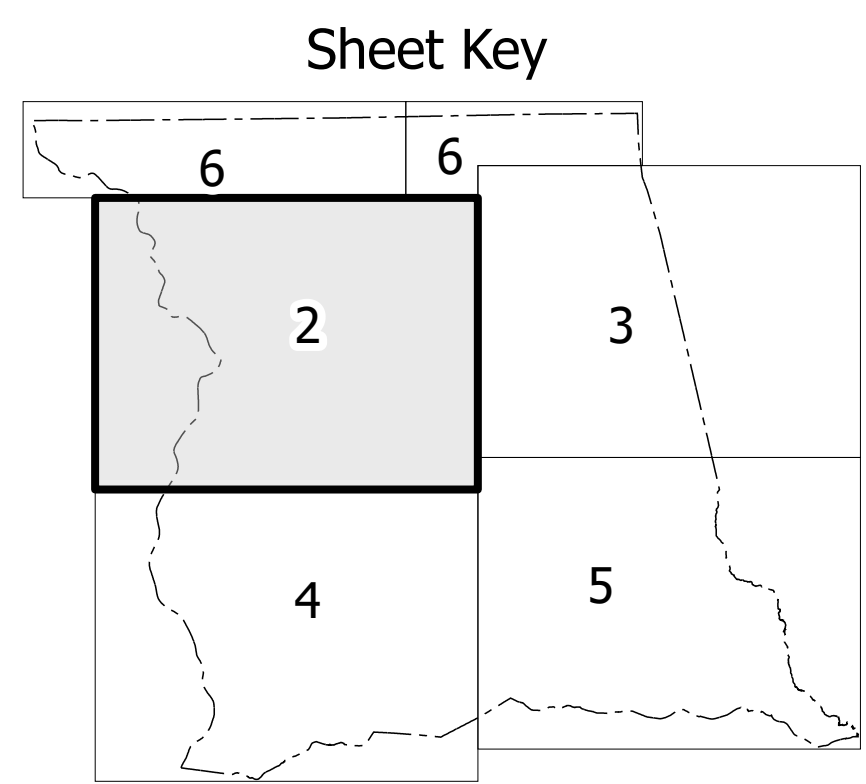
COPIES OF THIS MAP ARE AVAILABLE TO THE PUBLIC AT NOMINAL COST. mapping@ncdot.gov https://www.ncdot.gov/resources/State-Mapping/Pages/Ordering-Maps.aspx (919) 834-4460

The Mapping Section's goal is to provide the most accurate and current information possible. Map data is compiled from numerous sources with varying dates of publication and map accuracy standards. As a result, the accuracy, currency, and completeness of the data provided will vary. This map includes state-maintained roads and important non-system roads. The information shown on this map was last updated in July 2023. For additional information, visit https://www.ncdot.gov/resources/mapping and click on Data Providers or contact us by phone at (919) 834-4460.

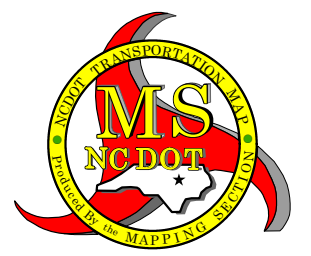
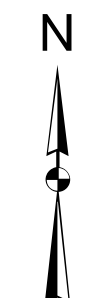


The following data is provided for informational purposes only. It is not intended to be used for legal or financial purposes. Map data is compiled from various sources and is subject to change without notice. The information shown on this map was last updated in July 2023. For additional information, visit www.montgomerync.gov.

COPIES OF THIS MAP ARE AVAILABLE TO THE PUBLIC AT NOMINAL COST. www.montgomerync.gov

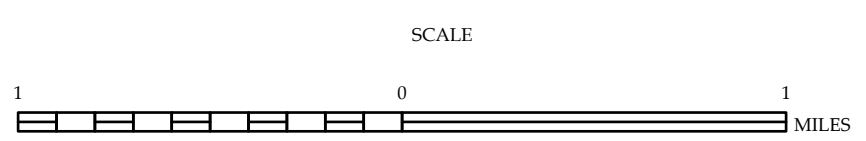


- ### LEGEND
- INTERSTATE US NC Divided Hwy Undivided Hwy
 - BLUE RIDGE PARKWAY
 - UNPAVED SURFACED ROAD
 - HARD SURFACED ROAD
 - NON-SYSTEM ROAD
 - PROVISIONALLY DESIGN ROAD
 - PROTECTED LOCATION
 - INTERSECTION DISTANCE
 - STANDARD ROAD BRIDGE
 - RAILROAD BRIDGE
 - DRAW SPAN OR BRIDGE
 - PEDESTRIAN BRIDGE
 - PEDESTRIAN WALKWAY
 - PEDESTRIAN UNDERPASS
 - VEHICULAR UNDERPASS
 - TUNNEL
 - CULVERT
 - PIPE
 - INTERSTATE HIGHWAY
 - U.S. NUMBERED HIGHWAY
 - N.C. NUMBERED HIGHWAY
 - U.S. NUMBERED BI-CYCLE ROUTE
 - N.C. NUMBERED BI-CYCLE ROUTE
 - INTERSTATE INTERCHANGE NUMBER
 - SECONDARY ROAD NUMBER
 - UTILITY LINES
 - RAILROAD LINE
 - RAILROAD STATION
 - INSSET AREA
 - STATE LINE
 - COUNTY LINE
 - CITY LIMITS
 - FERRY ROUTE
 - NARROW CREEK OR STREAM
 - WIDE RIVER OR CREEK
 - RESERVOIR, POND OR LAKE W/ ISLAND
 - DAM OR DAM WITH LOCK
 - WATERFALL
 - SWAMP
 - COMMUNITY, TOWN OR CITY CENTER
 - COUNTY SEAT
 - SCHOOL
 - COLLEGE OR UNIVERSITY
 - HOSPITAL
 - COAST GUARD STATION
 - CHURCH
 - CHURCH WITH CEMETERY
 - CEMETERY
 - PATROL STATION
 - CORRECTION OR PENAL INSTITUTION
 - QUARRY
 - MINE OR PIT
 - HIGHWAY GARAGE OR MAINT. YARD
 - HIGHWAY DIV. OR DIST. OFFICE
 - MILITARY POST
 - WEIGH STATION
 - FAIRGROUNDS
 - HISTORICAL SITE
 - POINTS OF INTEREST
 - STATE FOREST
 - LIGHTHOUSE
 - MOUNTAIN SUMMIT
 - OVERLOOK
 - REST AREA
 - VISITOR CENTER AREA
 - WELCOME CENTER AREA
 - AIRPORT
 - MILITARY AIRPORT
 - HELIPORT
 - NATIONAL STATE FOREST BOUNDARY
 - WILDLIFE REFUGE
 - NATIONAL STATE PARK BOUNDARY
 - GAME LANDS BOUNDARY
 - MILITARY RESERVATION BOUNDARY
 - INDIAN RESERVATION BOUNDARY



MONTGOMERY COUNTY NORTH CAROLINA

PREPARED BY THE
 NORTH CAROLINA DEPARTMENT OF TRANSPORTATION
 OPERATIONS PROGRAM MANAGEMENT UNIT - MAPPING SECTION
 IN COOPERATION WITH THE
 U.S. DEPARTMENT OF TRANSPORTATION
 FEDERAL HIGHWAY ADMINISTRATION

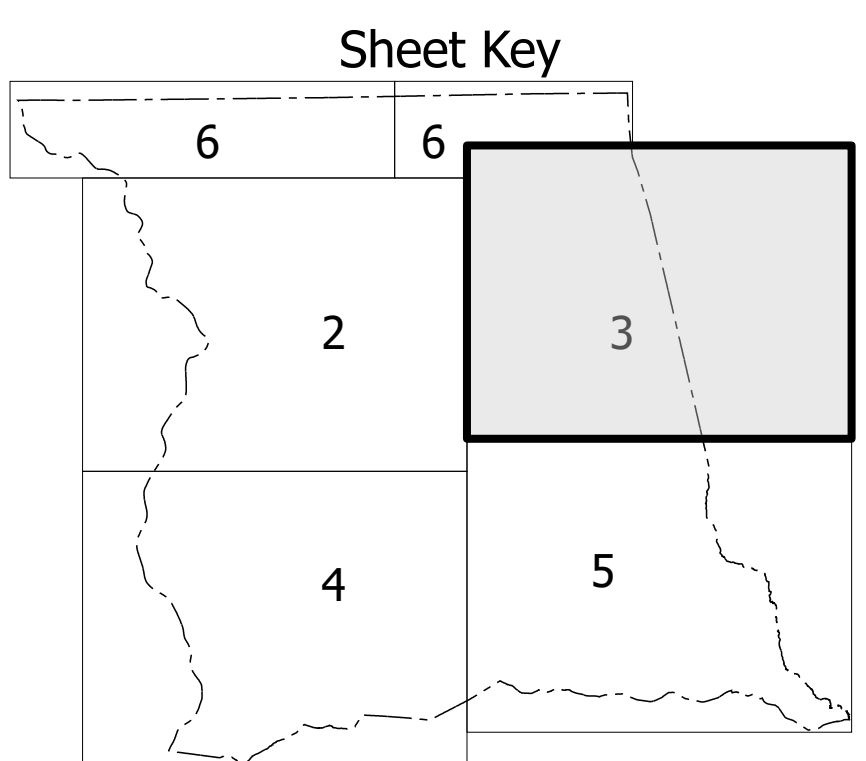


NORTH CAROLINA PLANE COORDINATE SYSTEM
 LAMBERT CONFORMAL CONIC PROJECTION



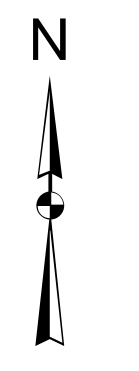
The information shown on this map is provided for informational purposes only. It is not intended to be used as a legal document. The information shown on this map is based on data provided to the Department of Transportation by the North Carolina Department of Transportation. The information shown on this map is based on data provided to the Department of Transportation by the North Carolina Department of Transportation.

CORNER OF THIS MAP IS AVAILABLE TO THE PUBLIC AT NOMINAL COST.



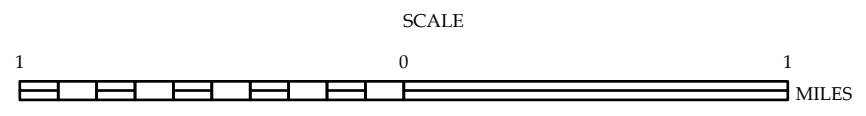
LEGEND

- INTERSTATE US NC Divided Hwy
- Blue Ridge Parkway Undivided Hwy
- Blue Ridge Parkway
- ESTATED SURFACED ROAD
- HARD SURFACED ROAD
- NON-SYSTEM ROAD
- PROVISIONALLY DESIGN ROAD
- PROBABLE LOCATION
- INTERSECTION DISTANCE
- STANDARD ROAD BRIDGE
- RAILROAD BRIDGE
- RAILROAD BRIDGE
- PEDESTRIAN BRIDGE
- PEDESTRIAN WALKWAY
- PEDESTRIAN UNDERPASS
- VEHICLE UNDERPASS
- TUNNEL
- CULVERT
- PIPE
- INTERSTATE HIGHWAY
- U.S. NUMBERED HIGHWAY
- S.C. NUMBERED HIGHWAY
- U.S. NUMBERED BI-CYCLE ROUTE
- S.C. NUMBERED BI-CYCLE ROUTE
- INTERSTATE INTERCHANGE NUMBER
- SECONDARY ROAD NUMBER
- UTILITY LINES
- RAILROAD LINE
- RAILROAD STATION
- STATE LINE
- COUNTY LINE
- CITY LIMITS
- FERRY ROUTE
- NARROW CREEK OR STREAM
- WIDE RIVER OR CREEK
- RESERVOIR, POND OR LAKE W/ ISLAND
- DAM OR DAM WITH LOCK
- WATERFALL
- SWAMP
- COMMUNITY, TOWN OR CITY CENTER
- COUNTY SEAT
- SCHOOL
- COLLEGE OR UNIVERSITY
- HOSPITAL
- COAST GUARD STATION
- CHURCH
- CHURCH WITH CEMETERY
- CEMETERY
- PATROL STATION
- CORRECTION OR PENAL INSTITUTION
- QUARRY
- MINE OR PIT
- HIGHWAY GARAGE OR MAINT. YARD
- HIGHWAY BIC. OR DIST. OFFICE
- MILITARY POST
- WEIGH STATION
- FABRIQUONS
- HISTORICAL SITE
- POINTS OF INTEREST
- STATE FOREST
- LIGHTHOUSE
- MOUNTAIN SUMMIT
- OVERLOOK
- REST AREA
- VISITOR CENTER AREA
- WELCOME CENTER AREA
- AIRPORT
- MILITARY AIRPORT
- HELIPORT
- NATIONAL / STATE FOREST BOUNDARY
- WILDLIFE REFUGE
- NATIONAL / STATE PARK BOUNDARY
- GAME LANDS BOUNDARY
- MILITARY RESERVATION BOUNDARY
- INDIAN RESERVATION BOUNDARY

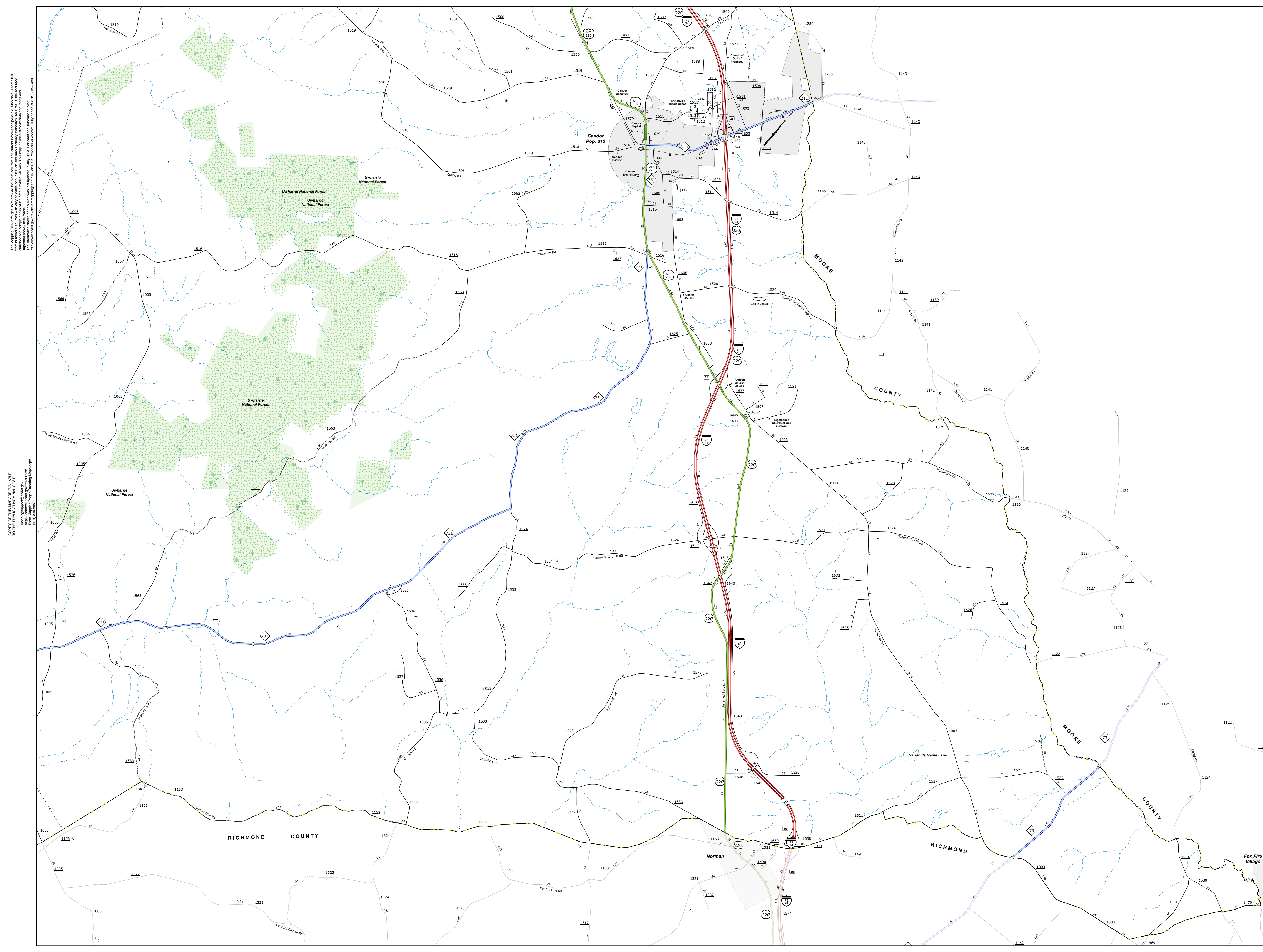


**MONTGOMERY COUNTY
NORTH CAROLINA**

PREPARED BY THE
 NORTH CAROLINA DEPARTMENT OF TRANSPORTATION
 OPERATIONS PROGRAM MANAGEMENT UNIT - MAPPING SECTION
 IN COOPERATION WITH THE
 U.S. DEPARTMENT OF TRANSPORTATION
 FEDERAL HIGHWAY ADMINISTRATION

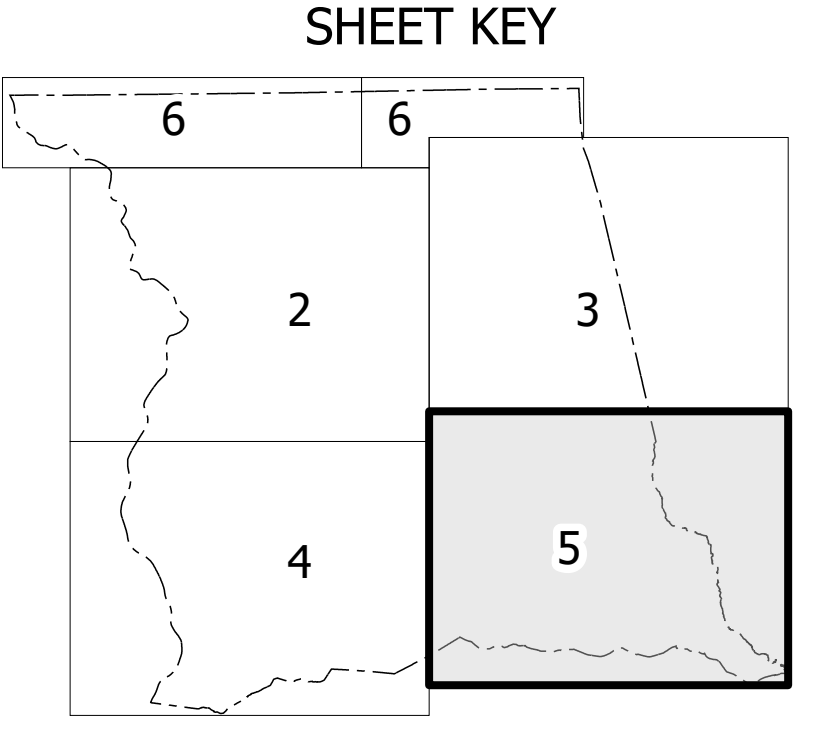


NORTH CAROLINA PLANE COORDINATE SYSTEM
 LAMBERT CONFORMAL CONIC PROJECTION


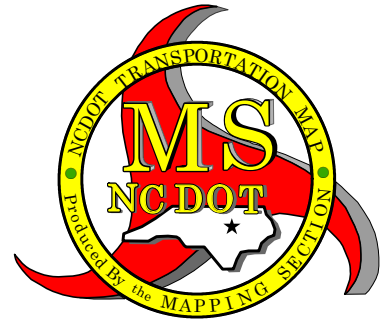


The planning districts shown on this map are for informational purposes only. They do not represent any official boundaries or jurisdictions. The information shown on this map was last updated in July 2023. For additional information, visit www.montgomerync.gov.

COPIES OF THIS MAP ARE AVAILABLE TO THE PUBLIC AT NOMINAL COST. www.montgomerync.gov



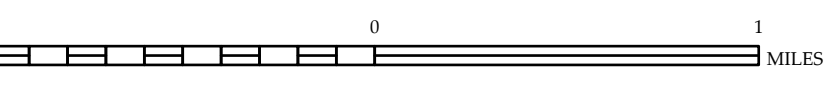
- ### LEGEND
- INTERSTATE US NC Divided Hwy Undivided Hwy
 - BLUE RIDGE PARKWAY
 - UNPAVED SURFACED ROAD
 - HARD SURFACED ROAD
 - SOFT-SURFACE ROAD
 - PROVISIONALLY DRAWN ROAD
 - PROJECTED LOCATION
 - INTERSECTION DISTANCE
 - STANDARD ROAD BRIDGE
 - RAILROAD BRIDGE
 - DRAW SPAN ON BRIDGE
 - PEDESTRIAN BRIDGE
 - PEDESTRIAN WALKWAY
 - PEDESTRIAN UNDERPASS
 - VEHICLE UNDERPASS
 - TUNNEL
 - CULVERT
 - PIPE
 - INTERSTATE HIGHWAY
 - U.S. NUMBERED HIGHWAY
 - N.C. NUMBERED HIGHWAY
 - U.S. NUMBERED BICYCLE ROUTE
 - N.C. NUMBERED BICYCLE ROUTE
 - INTERSTATE INTERCHANGE NUMBER
 - SECONDARY ROAD NUMBER
 - UTILITY LINES
 - RAILROAD LINE
 - RAILROAD STATION
 - INSET AREA
 - STATE LINE
 - COUNTY LINE
 - CITY LIMITS
 - FERRY ROUTE
 - NARROW CREEK OR STREAM
 - WIDE RIVER OR CREEK
 - RESERVOIR, POND OR LAKE W/ ISLAND
 - DAM OR DAM WITH LOCK
 - WATERFALL
 - SWAMP
 - COMMUNITY, TOWN OR CITY CENTER
 - COUNTY SEAT
 - SCHOOL
 - COLLEGE OR UNIVERSITY
 - HOSPITAL
 - COAST GUARD STATION
 - CHURCH
 - CHURCH WITH CEMETERY
 - CEMETERY
 - PATROL STATION
 - CORRECTION OR PENAL INSTITUTION
 - QUARRY
 - MINE OR PIT
 - HIGHWAY GARAGE OR MAINT. YARD
 - HIGHWAY DIV. OR DIST. OFFICE
 - MILITARY POST
 - WEIGH STATION
 - FAIRBOURNS
 - HISTORICAL SITE
 - POINTS OF INTEREST
 - STATE FOREST
 - LIGHTHOUSE
 - MOUNTAIN SUMMIT
 - OVERLOOK
 - REST AREA
 - VISITOR CENTER AREA
 - WELCOME CENTER AREA
 - AIRPORT
 - MILITARY AIRPORT
 - HELIPORT
 - NATIONAL / STATE FOREST BOUNDARY
 - WILDLIFE REFUGE
 - NATIONAL / STATE PARK BOUNDARY
 - GAME LANDS BOUNDARY
 - MILITARY RESERVATION BOUNDARY
 - INDIAN RESERVATION BOUNDARY

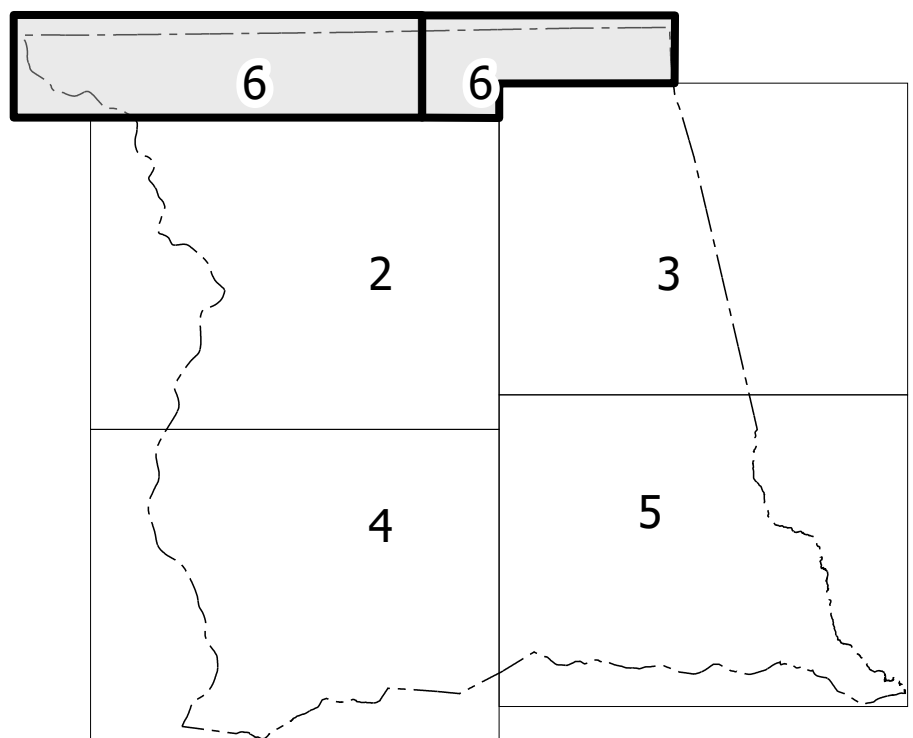
MONTGOMERY COUNTY NORTH CAROLINA

PREPARED BY THE
NORTH CAROLINA DEPARTMENT OF TRANSPORTATION
OPERATIONS PROGRAM MANAGEMENT UNIT - MAPPING SECTION
IN COOPERATION WITH THE
U.S. DEPARTMENT OF TRANSPORTATION
FEDERAL HIGHWAY ADMINISTRATION

SCALE

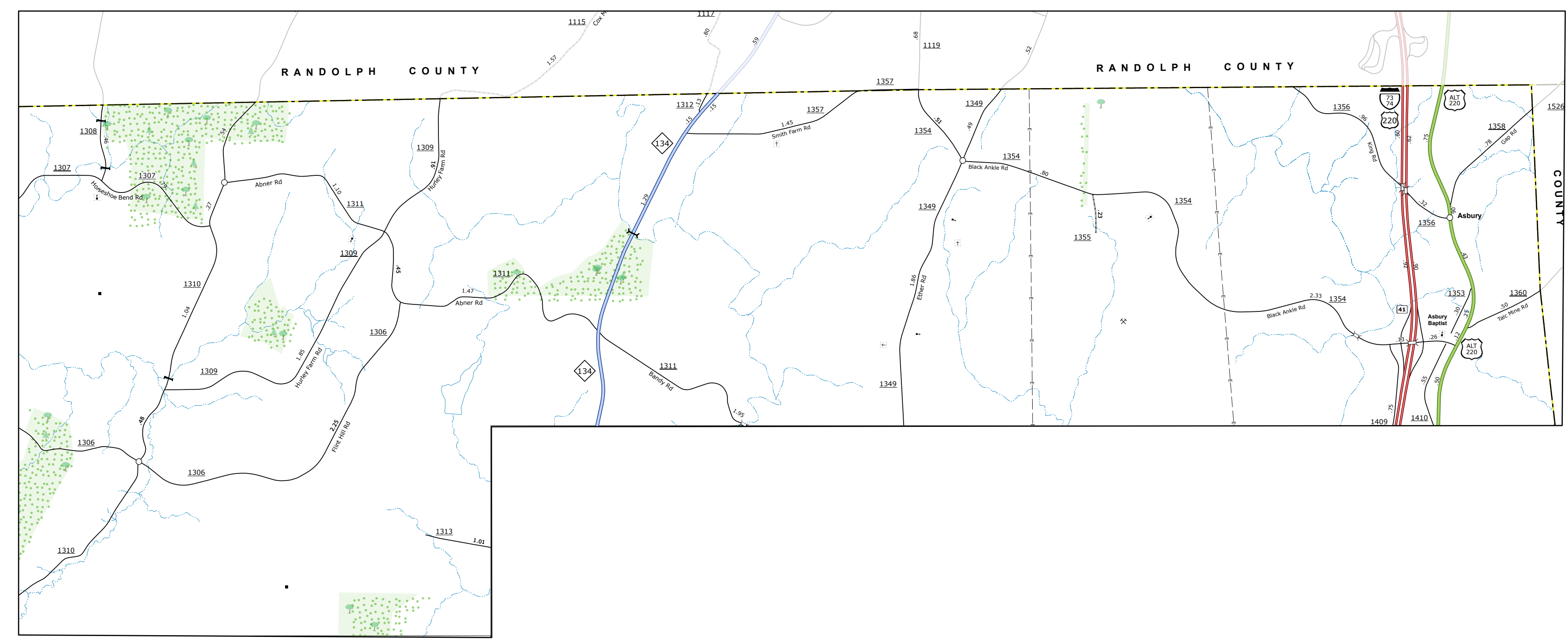
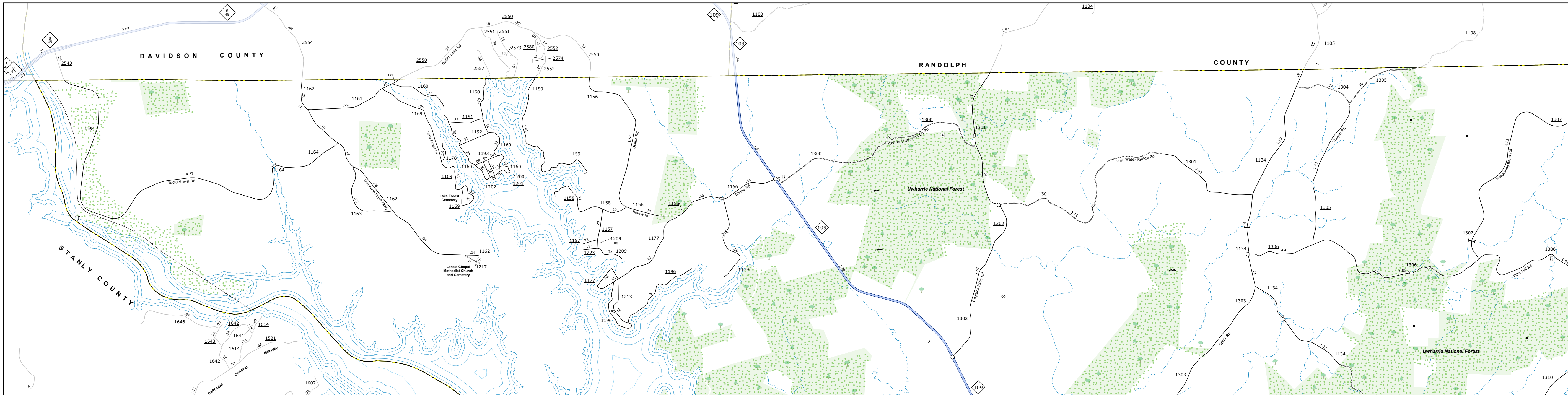


NORTH CAROLINA PLANE COORDINATE SYSTEM
LAMBERT CONFORMAL CONIC PROJECTION



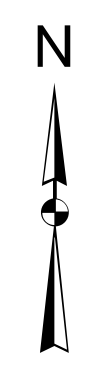
The information shown on this map is provided for informational purposes only. It is not intended to be used as a legal document. Map data is compiled from various sources and is subject to change without notice. The information shown on this map was last updated in July 2023. For additional information, visit www.ncdot.gov.

COPIES OF THIS MAP ARE AVAILABLE TO THE PUBLIC AT NOMINAL COST. www.ncdot.gov



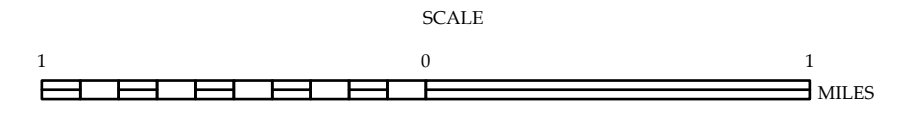
LEGEND

- INTERSTATE US NC Divided Hwy
- INTERSTATE US NC Undivided Hwy
- BLUE BRIDGE PARKWAY
- UNPAVED SURFACED ROAD
- HARD SURFACED ROAD
- NON-SYSTEM ROAD
- PROVISIONALLY DRAWN ROAD
- PROJECTED LOCATION
- INTERSECTION DISTANCE
- STANDARD ROAD BRIDGE
- RAILROAD BRIDGE
- RAW IRON ON BRIDGE
- PEDESTRIAN BRIDGE
- PEDESTRIAN WALKWAY
- PEDESTRIAN UNDERPASS
- VEHICULAR UNDERPASS
- TUNNEL
- CULVERT
- PIPE
- INTERSTATE HIGHWAY
- U.S. NUMBERED HIGHWAY
- N.C. NUMBERED HIGHWAY
- U.S. NUMBERED BICYCLE ROUTE
- N.C. NUMBERED BICYCLE ROUTE
- INTERSTATE INTERCHANGE NUMBER
- SECONDARY ROAD NUMBER
- RAILROAD LINE
- RAILROAD STATION
- POST AREA
- STATE LINE
- COUNTY LINE
- CITY LIMITS
- FERRY ROUTE
- NARROW CREEK OR STREAM
- WIDE RIVER OR CREEK
- RESERVOIR, POND OR LAKE W/ ISLAND
- DAM OR DAM WITH LOCK
- WATERFALL
- SWAMP
- COMMUNITY
- COUNTY SEAT
- SCHOOL
- COLLEGE OR UNIVERSITY
- HOSPITAL
- COAST GUARD STATION
- CHURCH
- CHURCH WITH CEMETERY
- CEMETERY
- PETROL STATION
- CORRECTION OR PENAL INSTITUTION
- QUARRY
- MINE OR PIT
- HIGHWAY GARAGE OR MAINT. YARD
- HIGHWAY DET. OR DIST. OFFICE
- MILITARY POST
- WEIGH STATION
- FARMHOUSE
- HISTORICAL SITE
- POINTS OF INTEREST
- LIGHTHOUSE
- MOUNTAIN SUMMIT
- OVERLOOK
- REST AREA
- VISITOR CENTER AREA
- WELCOME CENTER AREA
- AIRPORT
- MILITARY AIRPORT
- HELIPORT
- NATIONAL STATE FOREST BOUNDARY
- WILDLIFE REFUGE
- NATIONAL STATE PARK BOUNDARY
- GAME LANDS BOUNDARY
- MILITARY RESERVATION BOUNDARY
- INDIAN RESERVATION BOUNDARY



MONTGOMERY COUNTY
NORTH CAROLINA

PREPARED BY THE
NORTH CAROLINA DEPARTMENT OF TRANSPORTATION
OPERATIONS PROGRAM MANAGEMENT UNIT - MAPPING SECTION
IN COOPERATION WITH THE
U.S. DEPARTMENT OF TRANSPORTATION
FEDERAL HIGHWAY ADMINISTRATION



NORTH CAROLINA PLANE COORDINATE SYSTEM
LAMBERT CONFORMAL CONIC PROJECTION