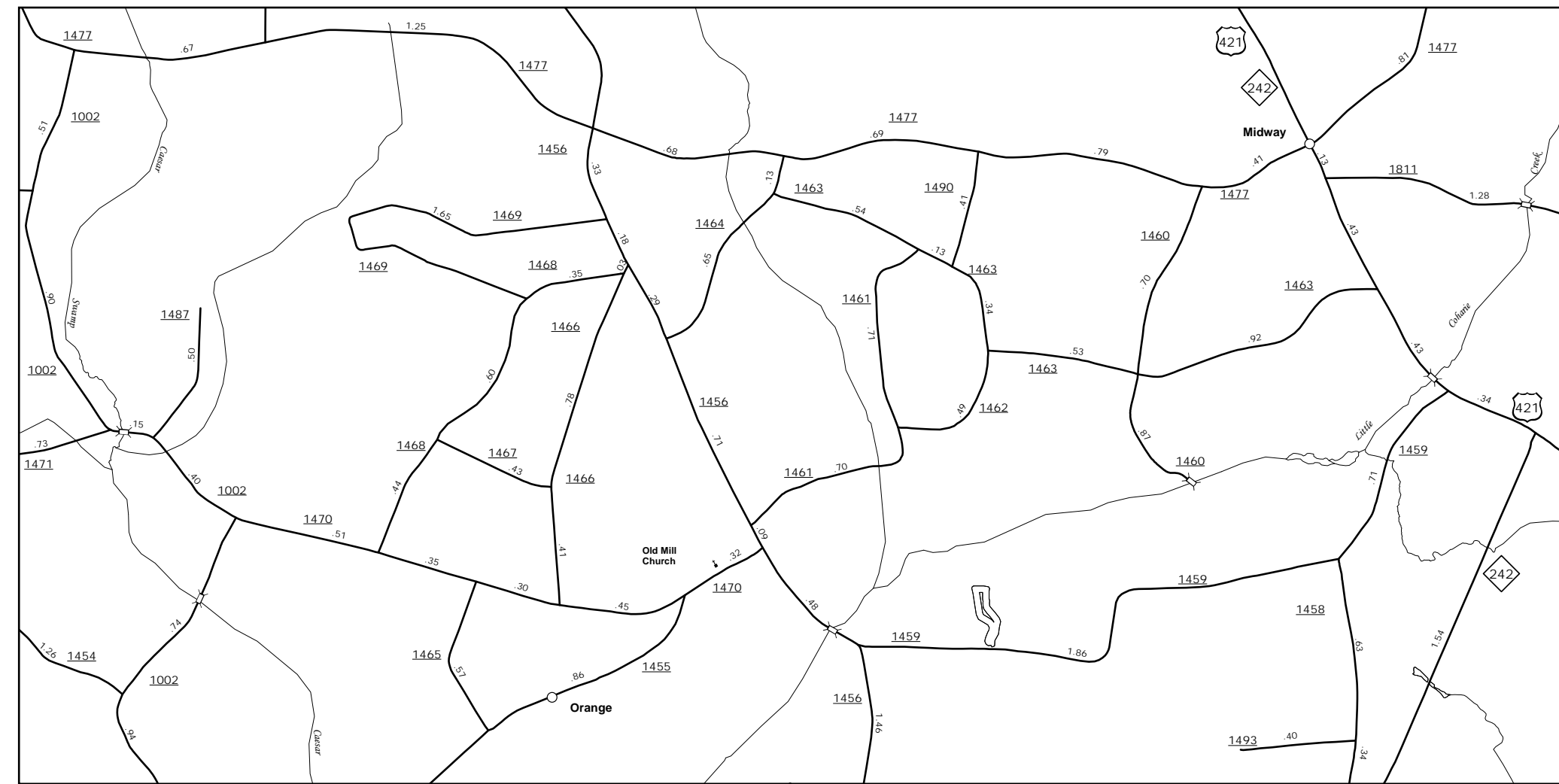
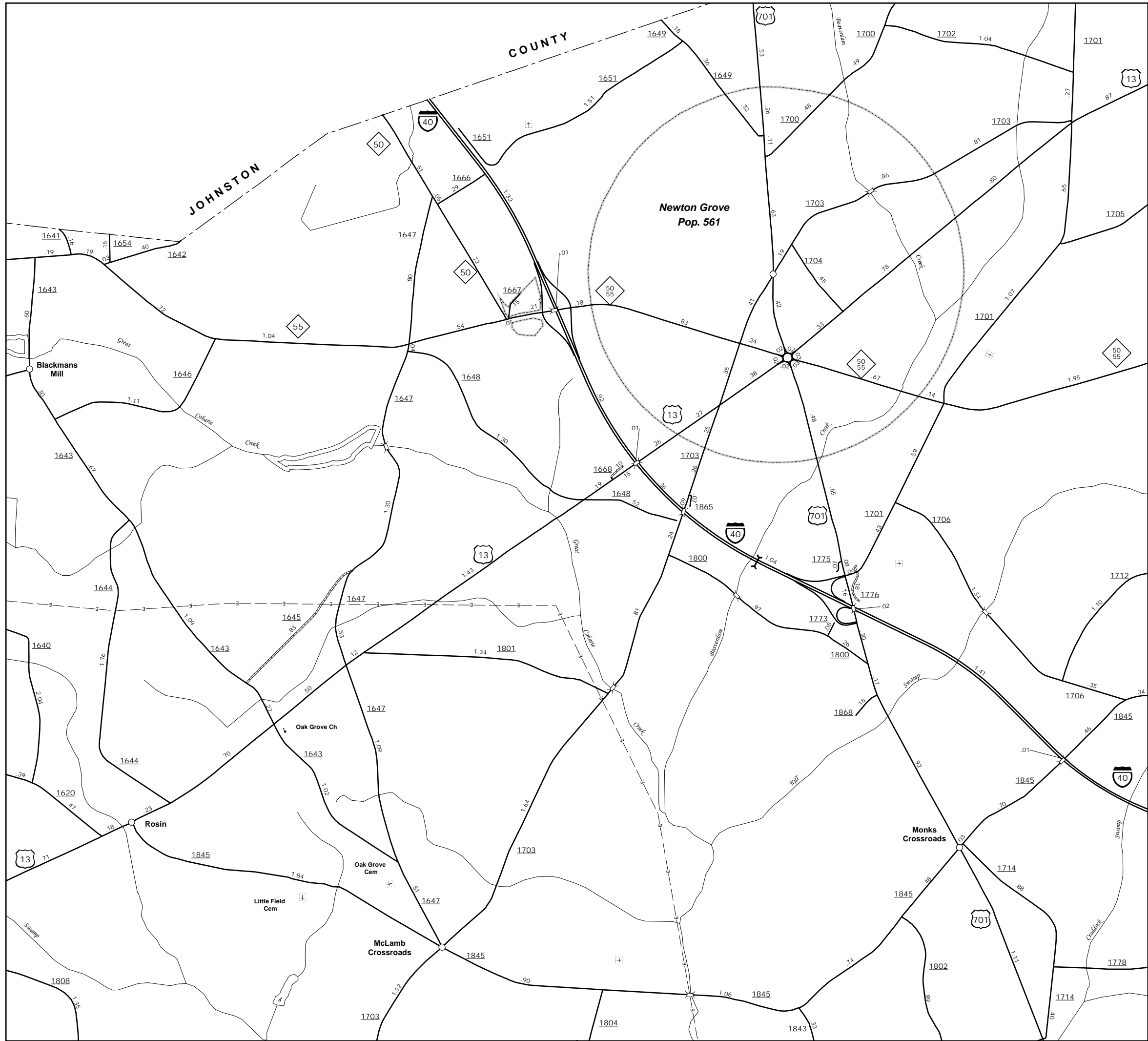


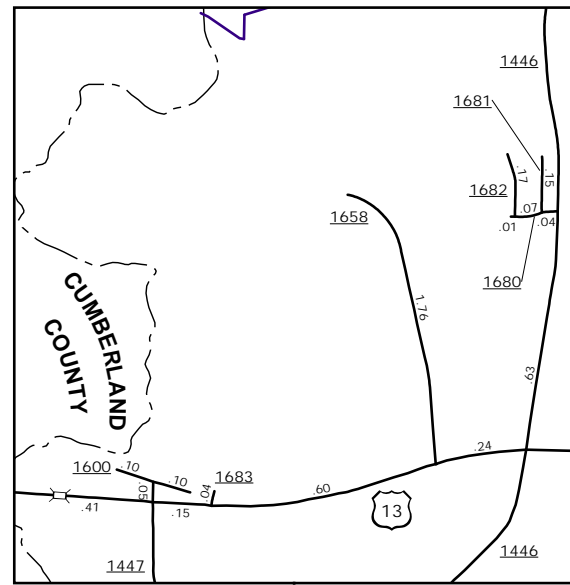
The Mapping Section's goal is to provide the most accurate and current information possible. Map data is compiled from numerous sources with the intent of providing the most accurate information possible. As a result, the accuracy of the data is not guaranteed. The data is provided as a service to the public and is not intended to be used for any purpose other than that for which it was intended. For additional information, visit <http://www.ncdot.gov/transportation/mapping>, and click on Data Providers or contact us by phone at (919) 835-8480.

COPIES OF THIS MAP ARE AVAILABLE
FOR PURCHASE AT A PUBLIC AT NOMINAL COST.
ADDRESS: N.C. DEPARTMENT OF TRANSPORTATION
MSAU - MAPPING SECTION
4809 BERN LEO
COLUMBIANA, NC 27838

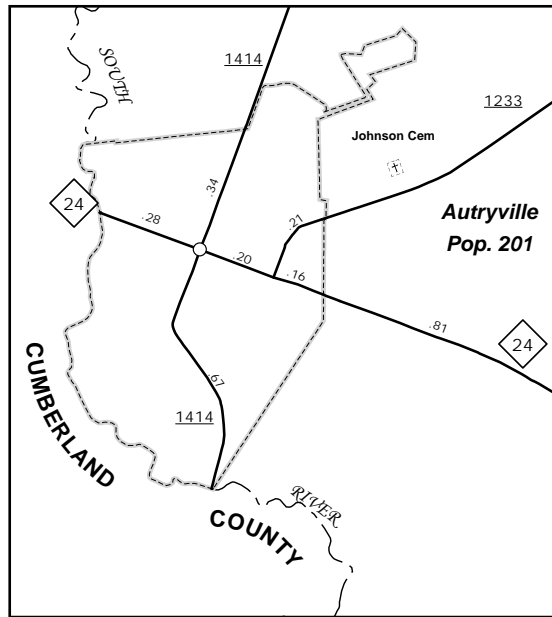


Newton Grove

Midway



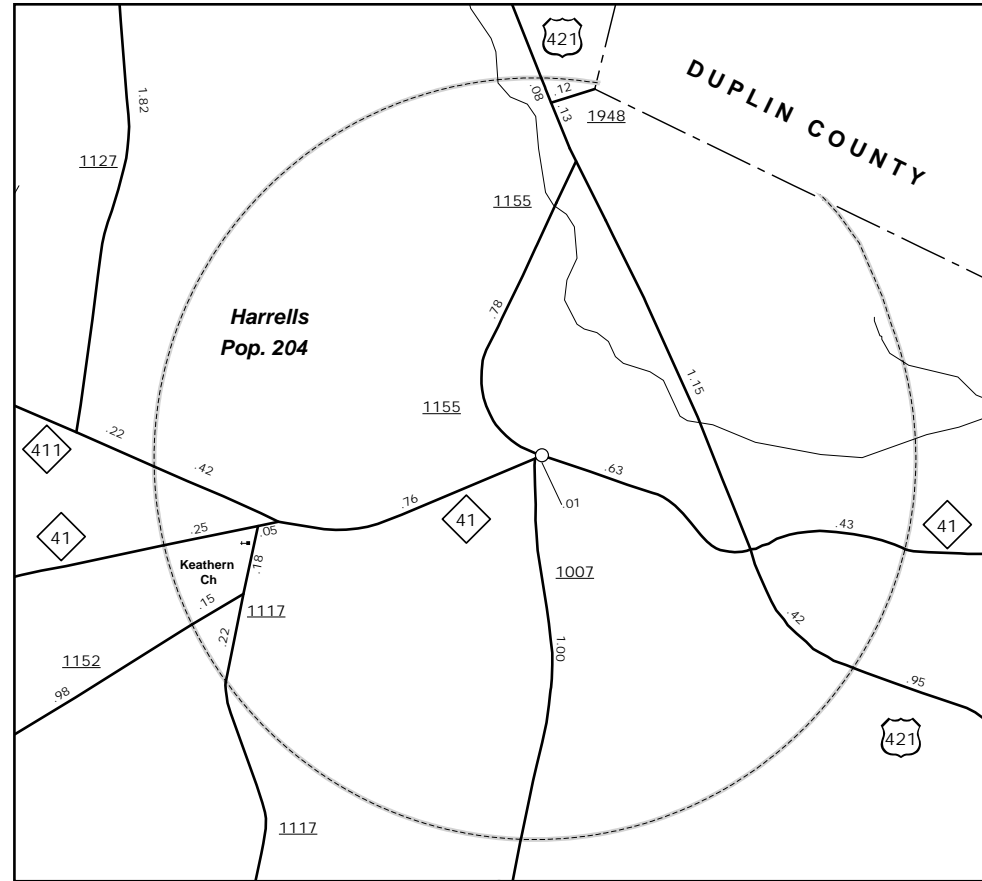
US13 West



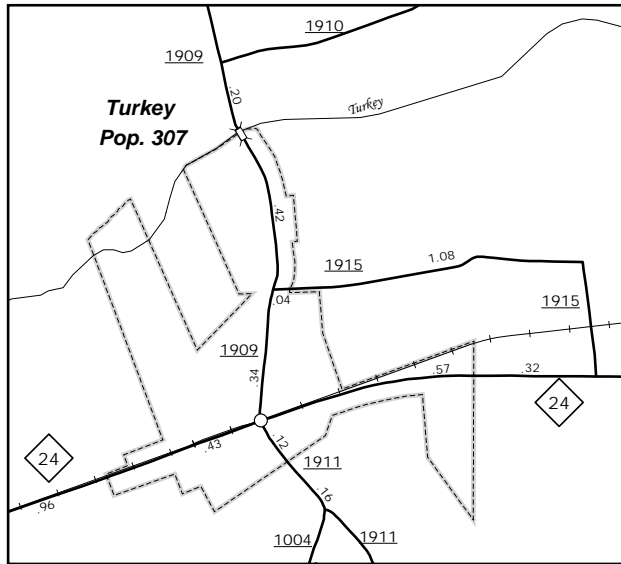
Autryville



Salem & Roseboro



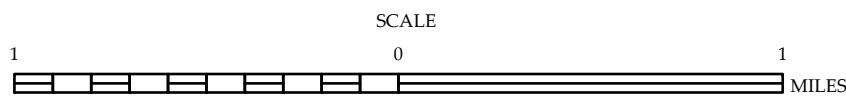
Harrells



Turkey



ENLARGED MUNICIPAL AND SUBURBAN AREAS
SAMPSON COUNTY
NORTH CAROLINA
PREPARED BY THE
NORTH CAROLINA DEPARTMENT OF TRANSPORTATION
MANAGEMENT SYSTEMS AND ASSESSMENT UNIT - MAPPING SECTION
IN COOPERATION WITH THE
U.S. DEPARTMENT OF TRANSPORTATION
FEDERAL HIGHWAY ADMINISTRATION



10,000 FOOT GRID BASED ON NORTH CAROLINA PLANE COORDINATE SYSTEM
LAMBERT CONFORMAL CONIC PROJECTION