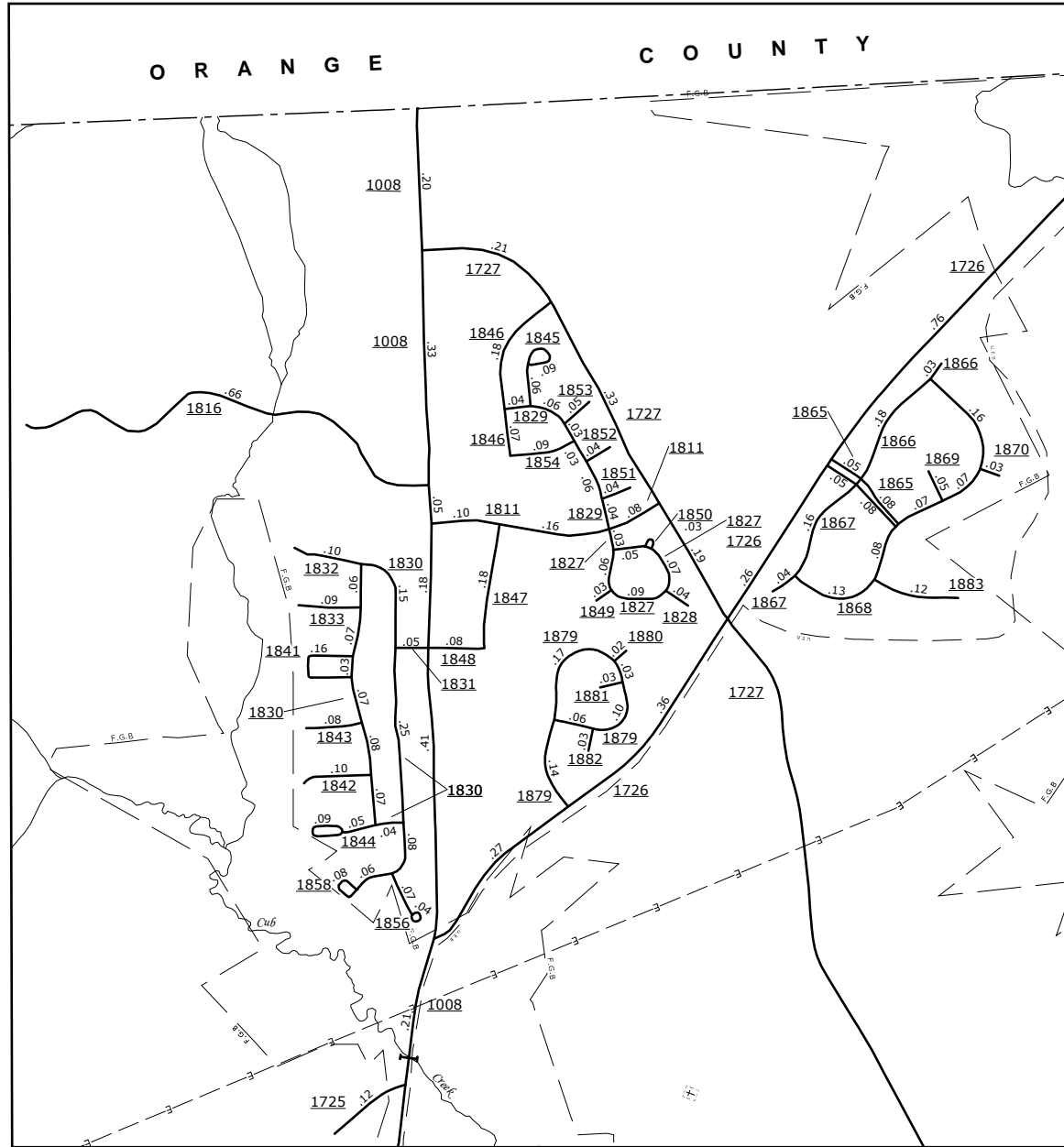
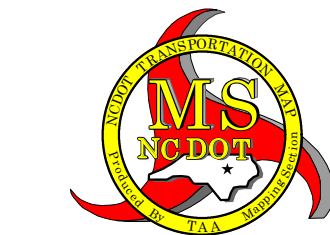
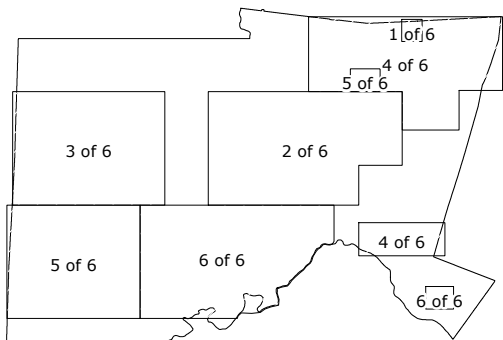


The Mapping Section's goal is to provide the most accurate and current information possible. Map data is compiled from numerous sources with varying dates of publication and map accuracy standards. As a result, the accuracy of the map is not guaranteed. The Mapping Section is not responsible for any errors or omissions. The information shown on this map was last updated in September, 2017. For additional information, visit www.ncdot.gov. The information shown on this map was last updated in September, 2017. For additional information, visit www.ncdot.gov. The information shown on this map was last updated in September, 2017. For additional information, visit www.ncdot.gov.

COPIES OF THIS MAP ARE AVAILABLE
FROM THE
N.C. DEPARTMENT OF TRANSPORTATION
MSAU - MAPPING SECTION
4809 BERT RD.
Raleigh, NC 27609

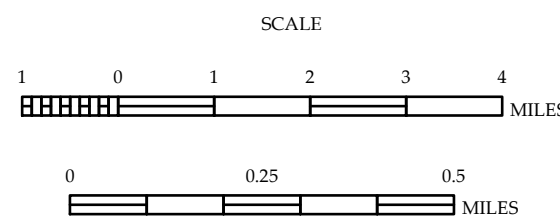


0 0.25 0.5
MILES
Inset 1 Mount Carmel Road and Vicinity



CHATHAM COUNTY NORTH CAROLINA

PREPARED BY THE
NORTH CAROLINA DEPARTMENT OF TRANSPORTATION
MANAGEMENT SYSTEMS AND ASSESSMENTS UNIT - MAPPING SECTION
IN COOPERATION WITH THE
U.S. DEPARTMENT OF TRANSPORTATION
FEDERAL HIGHWAY ADMINISTRATION



10,000 FOOT GRID BASED ON NORTH CAROLINA PLANE COORDINATE SYSTEM
LAMBERT CONFORMAL CONIC PROJECTION