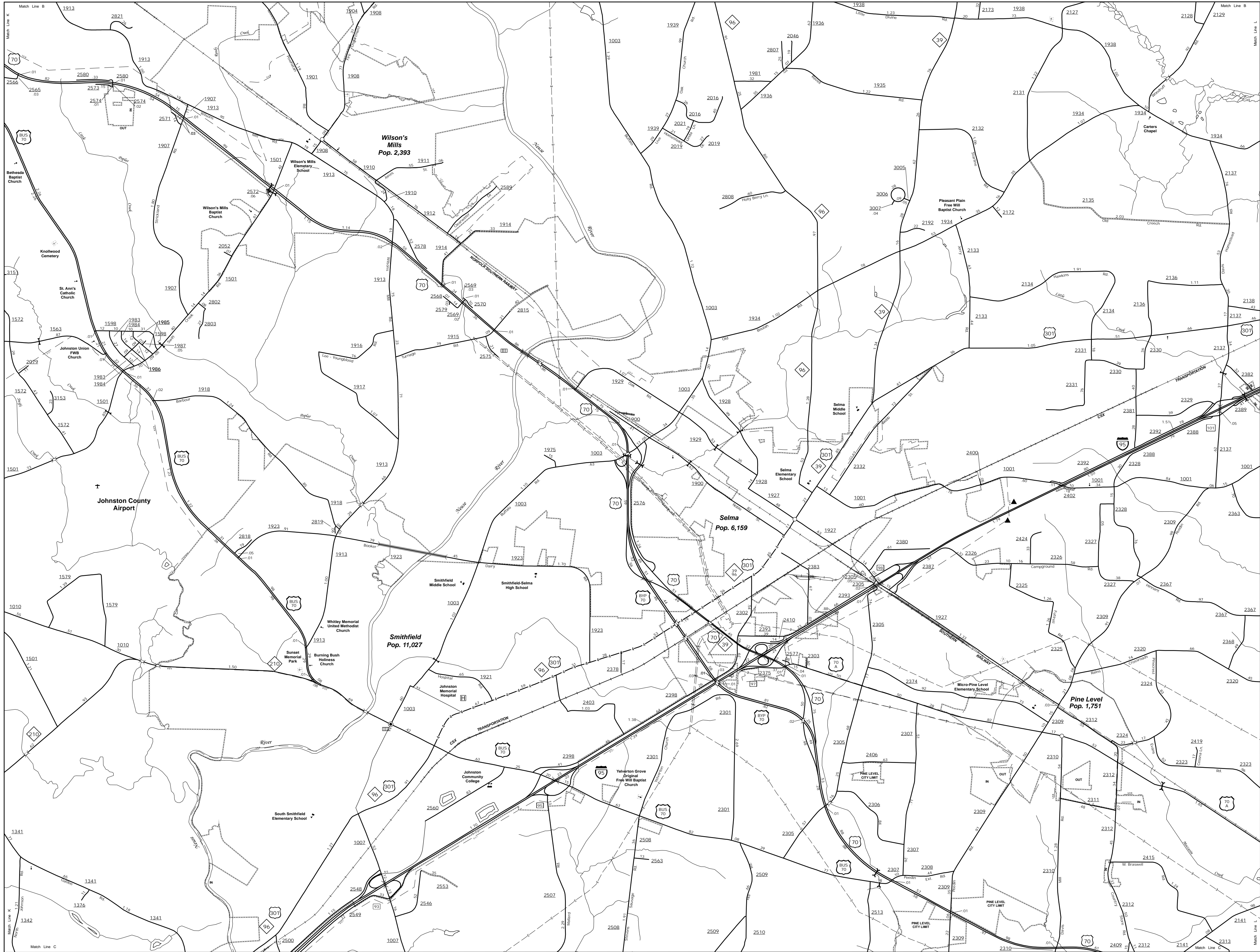


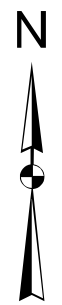
The MS&U's goal is to provide the most accurate and current information possible. Map data is compiled from numerous sources, varying in the timeliness of the data provided and map accuracy. As a result, roads and other features may not be shown in the most current or accurate manner. Map includes state and important non-system roads.

Map data was last updated on June, 2014. For additional information, visit <http://www.ncdot.gov/transportation/MS&U> and click on Data Providers or contact us at (819) 835-9480.

COPIES OF THIS MAP ARE AVAILABLE
FOR THE PUBLIC AT NOMINAL COST.
ADDRESS:
N.C. DEPARTMENT OF TRANSPORTATION
MS&U - MAPPING SECTION
4809 BERT LEO
COLUMBUS, NC 27805



Smithfield

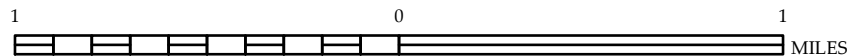


ENLARGED MUNICIPAL AND SUBURBAN AREAS

JOHNSTON COUNTY NORTH CAROLINA

PREPARED BY THE
NORTH CAROLINA DEPARTMENT OF TRANSPORTATION
MANAGEMENT SYSTEMS AND ASSESSMENTS UNIT - MAPPING SECTION
IN COOPERATION WITH THE
U.S. DEPARTMENT OF TRANSPORTATION
FEDERAL HIGHWAY ADMINISTRATION

SCALE



10,000 FOOT GRID BASED ON NORTH CAROLINA PLANE COORDINATE SYSTEM
LAMBERT CONFORMAL CONIC PROJECTION

SHEET 8 OF 13