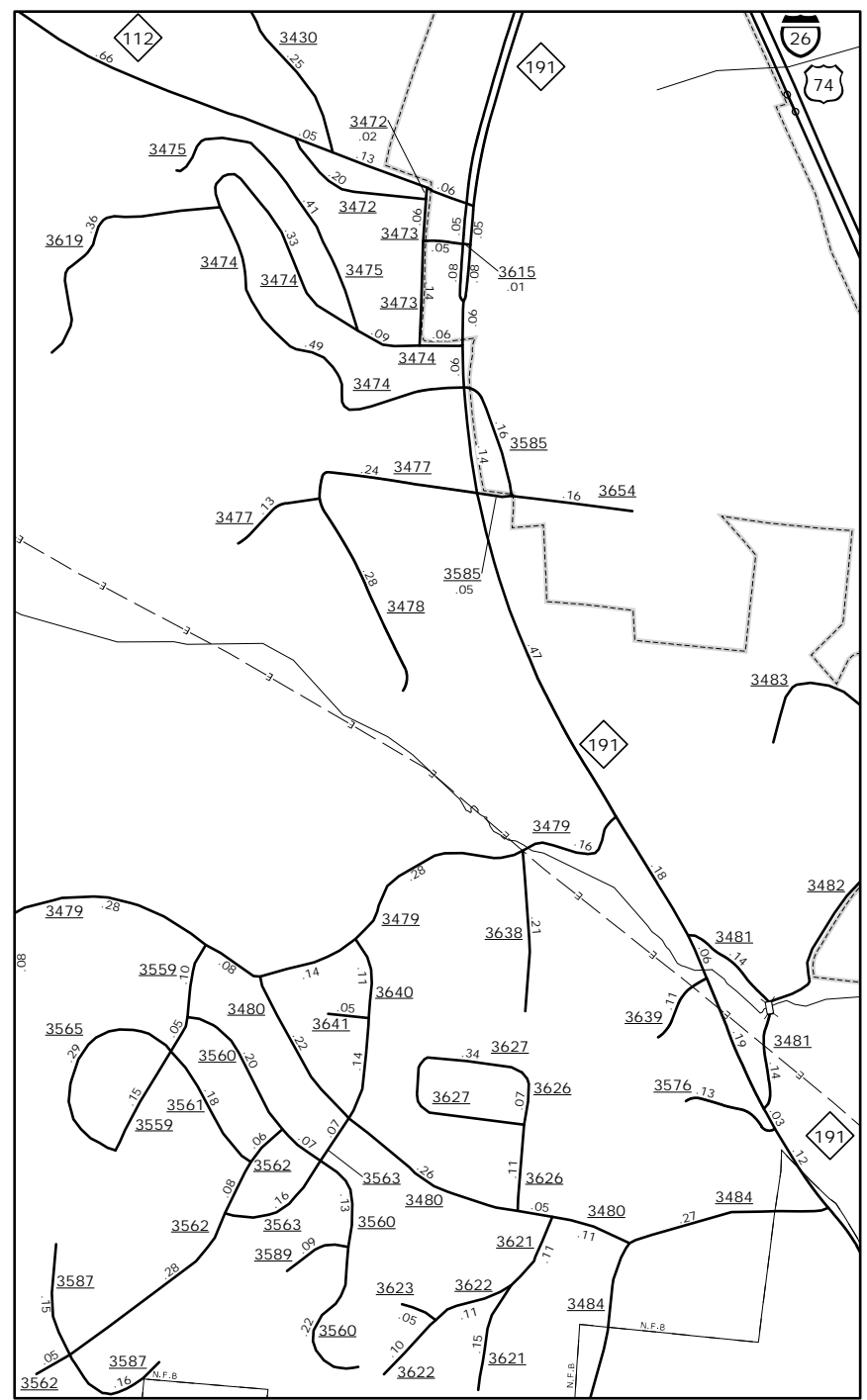
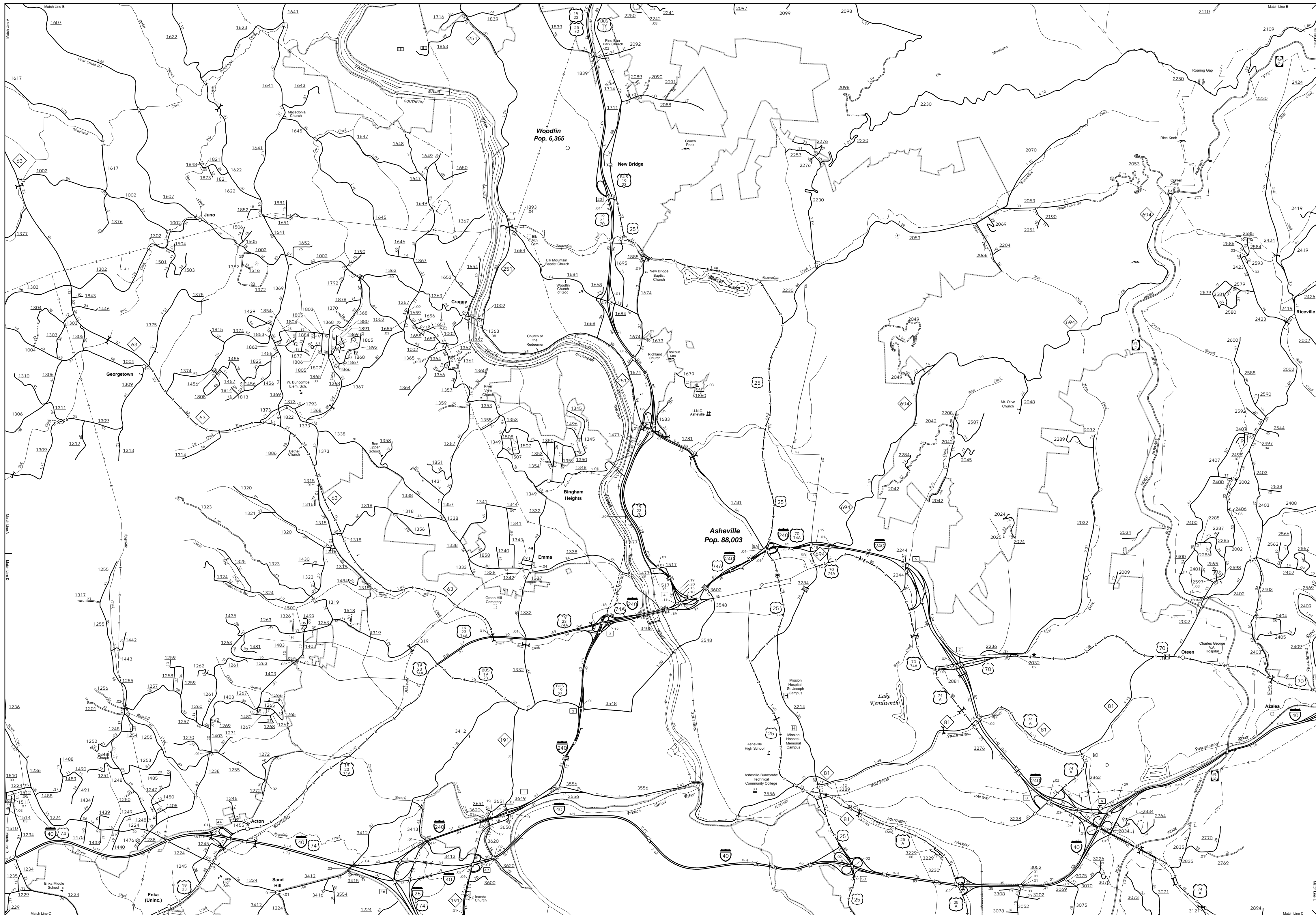


The MSAL's goal is to provide the most accurate and current information possible. Map data is compiled from numerous sources with varying degrees of accuracy and timeliness. As a result, roads and other features may not always be shown in the most current or accurate manner. The MSAL is not responsible for any errors or omissions. For additional information, visit <http://www.ncdot.gov/transportation/MSAL> and click on Data Providers or contact us at (819) 535-4840.

COPIES OF THIS MAP ARE AVAILABLE
TO THE PUBLIC AT NOMINAL COST.
ADDRESS: N.C. DEPARTMENT OF TRANSPORTATION
MSAL-MAPPING SECTION
4809 BERN LEO
COLUMBIANA, NC 27828



NC 112 & NC 191 Area
0 0.25 0.5
MILES

Asheville and Vicinity



ENLARGED MUNICIPAL AND SUBURBAN AREAS
BUNCOMBE COUNTY
NORTH CAROLINA

PREPARED BY THE
NORTH CAROLINA DEPARTMENT OF TRANSPORTATION
MANAGEMENT SYSTEMS AND ASSESSMENTS UNIT - MAPPING SECTION
IN COOPERATION WITH THE
U.S. DEPARTMENT OF TRANSPORTATION
FEDERAL HIGHWAY ADMINISTRATION

SCALE
1 0 1
MILES

10,000 FOOT GRID BASED ON NORTH CAROLINA PLANE COORDINATE SYSTEM
LAMBERT CONFORMAL CONIC PROJECTION

SHEET 2 OF 7