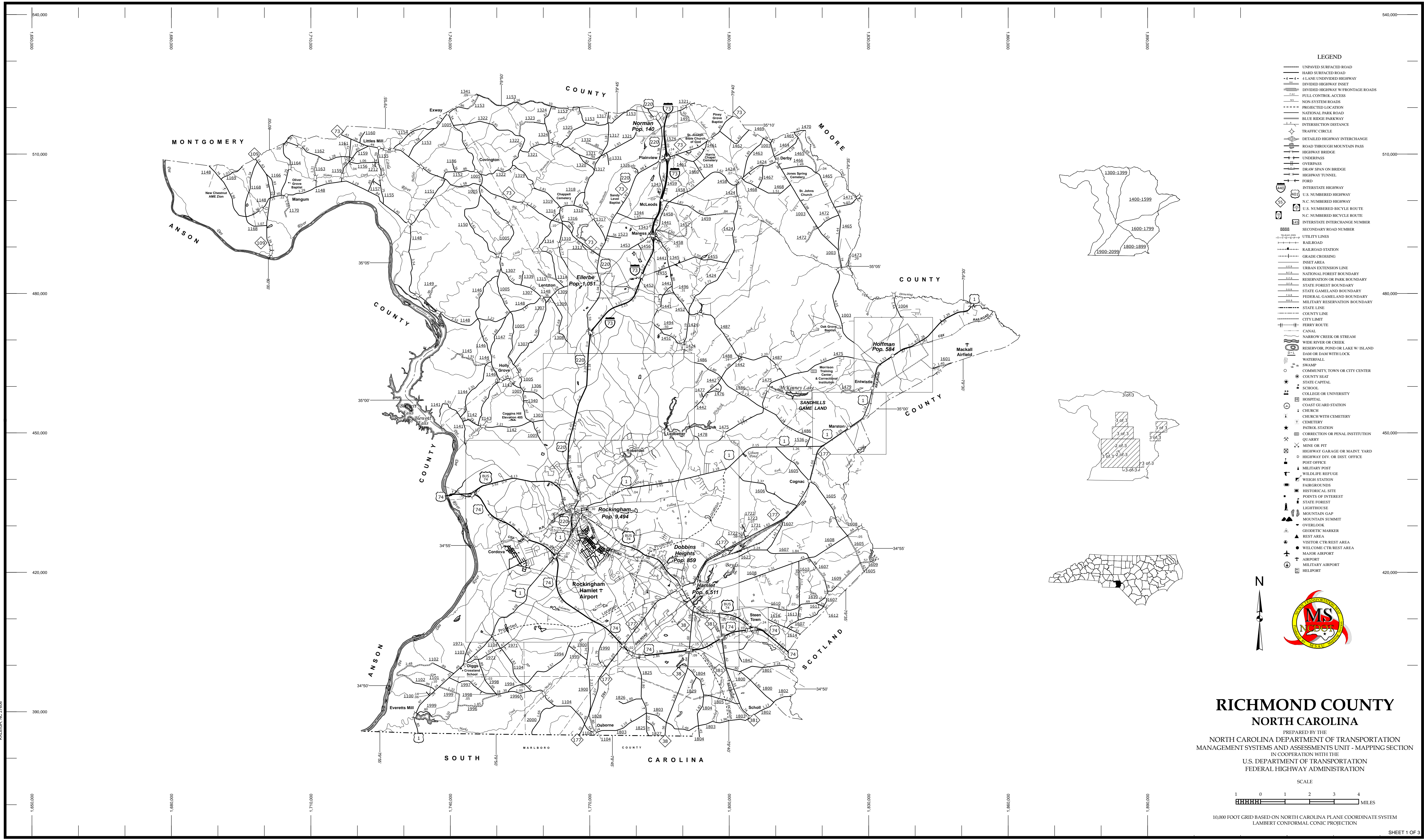


COPIES OF THIS MAP ARE AVAILABLE  
FROM THE PUBLIC AT NOMINAL COST.  
N.C. DEPARTMENT OF TRANSPORTATION  
ADDRESS: MS&A-MAPPING SECTION  
4809 BERTY LEO  
COLUMBIANA, NC 27838

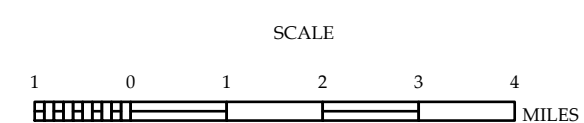


- LEGEND**
- UNPAVED SURFACED ROAD
  - HARD SURFACED ROAD
  - 4-4-4 LANE UNDIVIDED HIGHWAY
  - DIVIDED HIGHWAY INSET
  - DIVIDED HIGHWAY W/FRONTAGE ROADS
  - FULL CONTROL ACCESS
  - NON-SYSTEM ROADS
  - PROJECTED LOCATION
  - NATIONAL PARK ROAD
  - BLUE RIDGE PARKWAY
  - INTERSECTION DISTANCE
  - TRAFFIC CIRCLE
  - DETAILED HIGHWAY INTERCHANGE
  - ROAD THROUGH MOUNTAIN PASS
  - HIGHWAY BRIDGE
  - UNDERPASS
  - OVERPASS
  - DRAW SPAN ON BRIDGE
  - HIGHWAY TUNNEL
  - FORD
  - INTERSTATE HIGHWAY
  - U.S. NUMBERED HIGHWAY
  - N.C. NUMBERED HIGHWAY
  - U.S. NUMBERED BICYCLE ROUTE
  - N.C. NUMBERED BICYCLE ROUTE
  - INTERSTATE INTERCHANGE NUMBER
  - SECONDARY ROAD NUMBER
  - UTILITY LINES
  - RAILROAD
  - RAILROAD STATION
  - GRADE CROSSING
  - INSET AREA
  - URBAN EXTENSION LINE
  - NATIONAL FOREST BOUNDARY
  - STATE FOREST BOUNDARY
  - STATE GAMLAND BOUNDARY
  - FEDERAL GAMLAND BOUNDARY
  - MILITARY RESERVATION BOUNDARY
  - STATE LINE
  - COUNTY LINE
  - CITY LIMIT
  - FERRY ROUTE
  - CANAL
  - NARROW CREEK OR STREAM
  - WIDE RIVER OR CREEK
  - RESERVOIR, POND OR LAKE W/ ISLAND
  - DAM OR DAM WITH LOCK
  - WATERFALL
  - SWAMP
  - COMMUNITY, TOWN OR CITY CENTER
  - COUNTY SEAT
  - STATE CAPITAL
  - SCHOOL
  - COLLEGE OR UNIVERSITY
  - HOSPITAL
  - COAST GUARD STATION
  - CHURCH
  - CHURCH WITH CEMETERY
  - CEMETERY
  - PATROL STATION
  - CORRECTION OR PENAL INSTITUTION
  - QUARRY
  - MINE OR PIT
  - HIGHWAY GARAGE OR MAINT. YARD
  - HIGHWAY DIV. OR DIST. OFFICE
  - POST OFFICE
  - MILITARY POST
  - WILDLIFE REFUGE
  - WEIGH STATION
  - FAIRGROUNDS
  - HISTORICAL SITE
  - POINTS OF INTEREST
  - STATE FOREST
  - LIGHTHOUSE
  - MOUNTAIN GAP
  - MOUNTAIN SUMMIT
  - OVERLOOK
  - GEODETIC MARKER
  - REST AREA
  - VISITOR CTR. REST AREA
  - WELCOME CTR. REST AREA
  - MAJOR AIRPORT
  - AIRPORT
  - MILITARY AIRPORT
  - HELIPORT



# RICHMOND COUNTY NORTH CAROLINA

PREPARED BY THE  
NORTH CAROLINA DEPARTMENT OF TRANSPORTATION  
MANAGEMENT SYSTEMS AND ASSESSMENTS UNIT - MAPPING SECTION  
IN COOPERATION WITH THE  
U.S. DEPARTMENT OF TRANSPORTATION  
FEDERAL HIGHWAY ADMINISTRATION



10,000 FOOT GRID BASED ON NORTH CAROLINA PLANE COORDINATE SYSTEM  
LAMBERT CONFORMAL CONIC PROJECTION