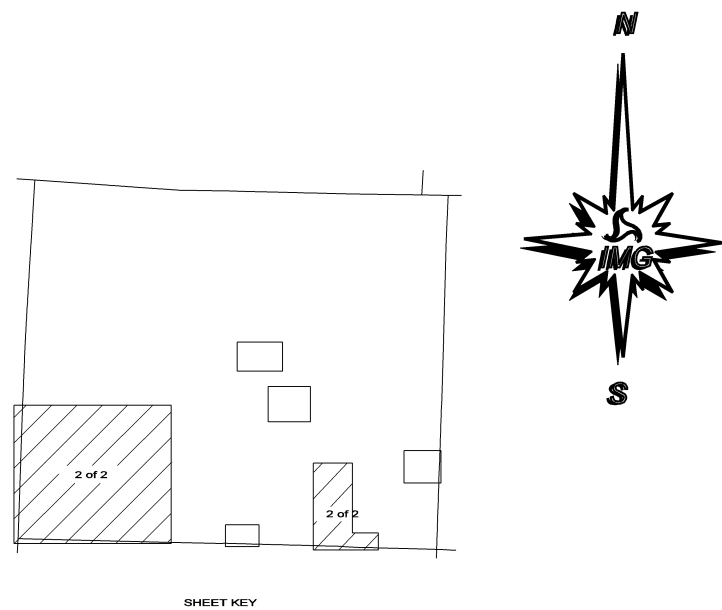
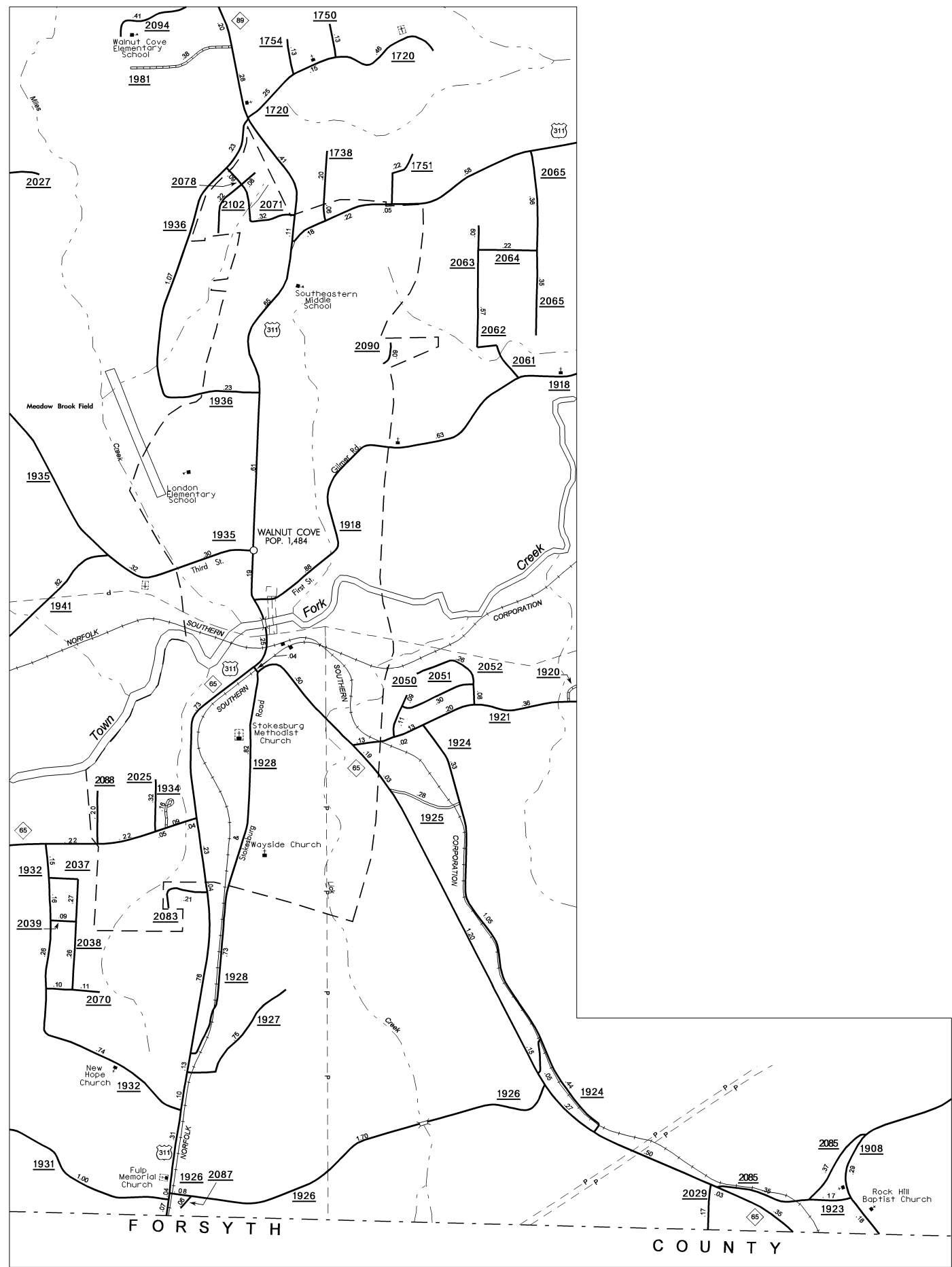
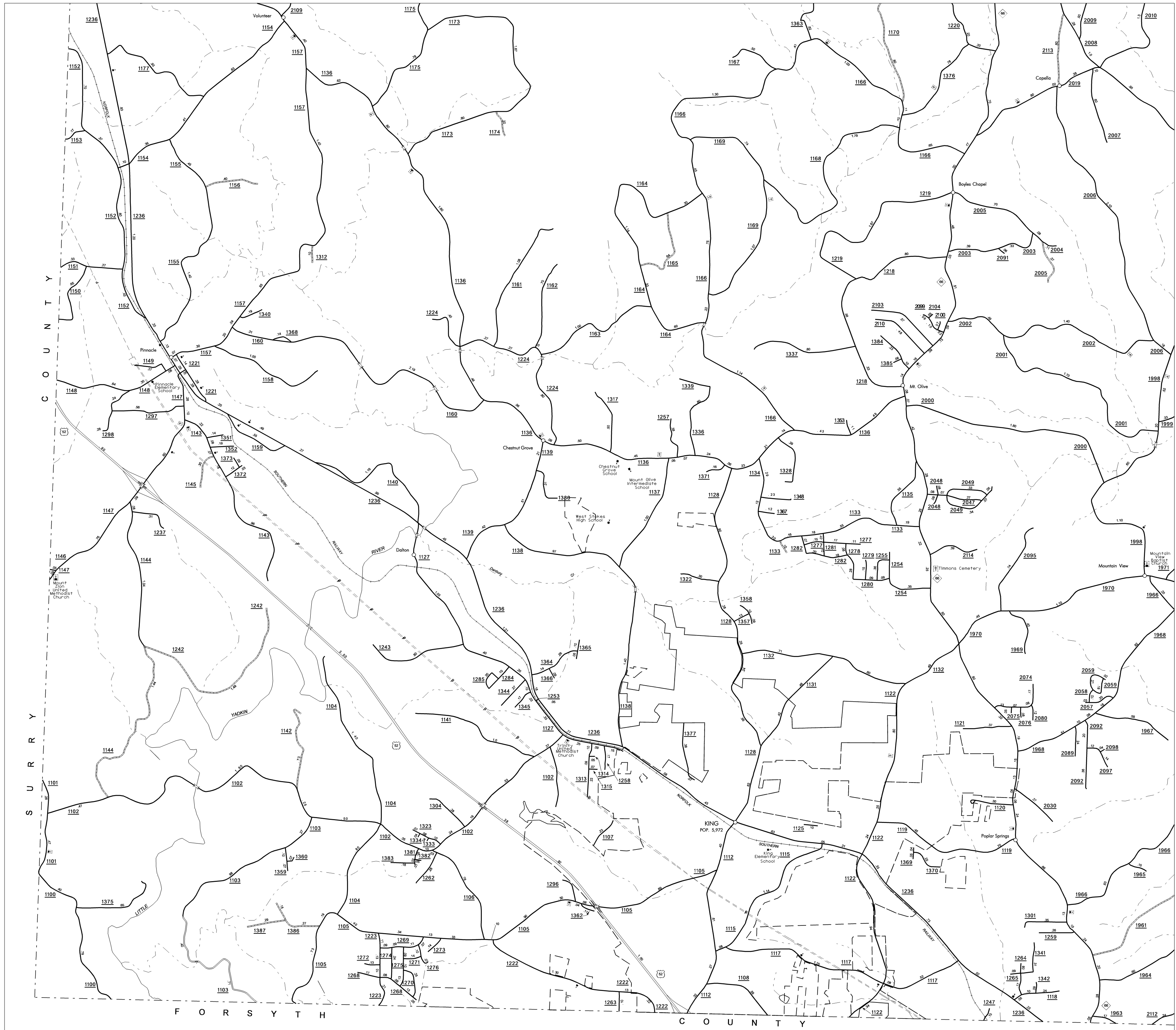


COPIES OF THIS MAP ARE AVAILABLE  
TO THE PUBLIC AT A NOMINAL COST  
ADDRESS:  
N.C. DEPARTMENT OF TRANSPORTATION  
3401 CARL SANDERS BLVD.  
RALEIGH, N.C. 27610

SUP. 1

REVISED
3/1/00 JMB
6/15/06 JMB
11/06/06 JMB
3/25/07 JMB
5/11/07 JMB
12/4/07 JMB
2/25/08 JMB



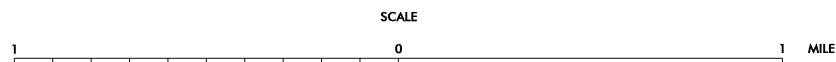
ENLARGED MUNICIPAL AND SUBURBAN AREAS

# STOKES COUNTY

NORTH CAROLINA

PREPARED BY THE  
NORTH CAROLINA DEPARTMENT OF TRANSPORTATION  
INFORMATION TECHNOLOGY - IMG UNIT

IN COOPERATION WITH THE  
U.S. DEPARTMENT OF TRANSPORTATION  
FEDERAL HIGHWAY ADMINISTRATION



10,000 FOOT GRID BASED ON NORTH CAROLINA PLANE COORDINATE SYSTEM  
POLYCONIC PROJECTION