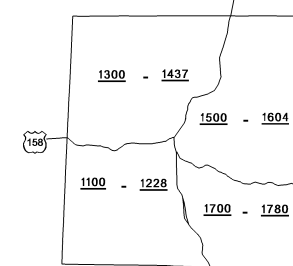
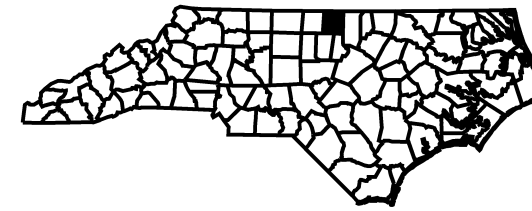
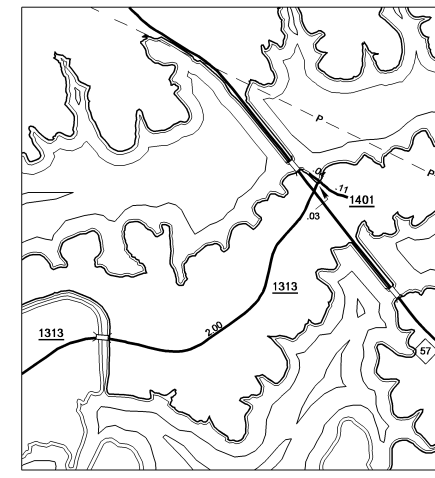
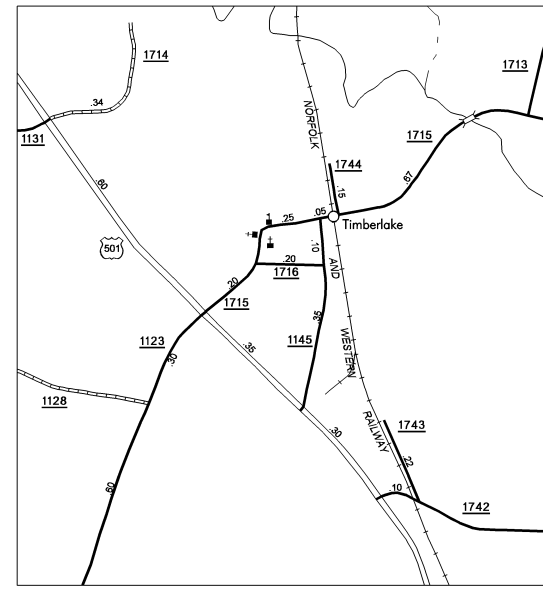
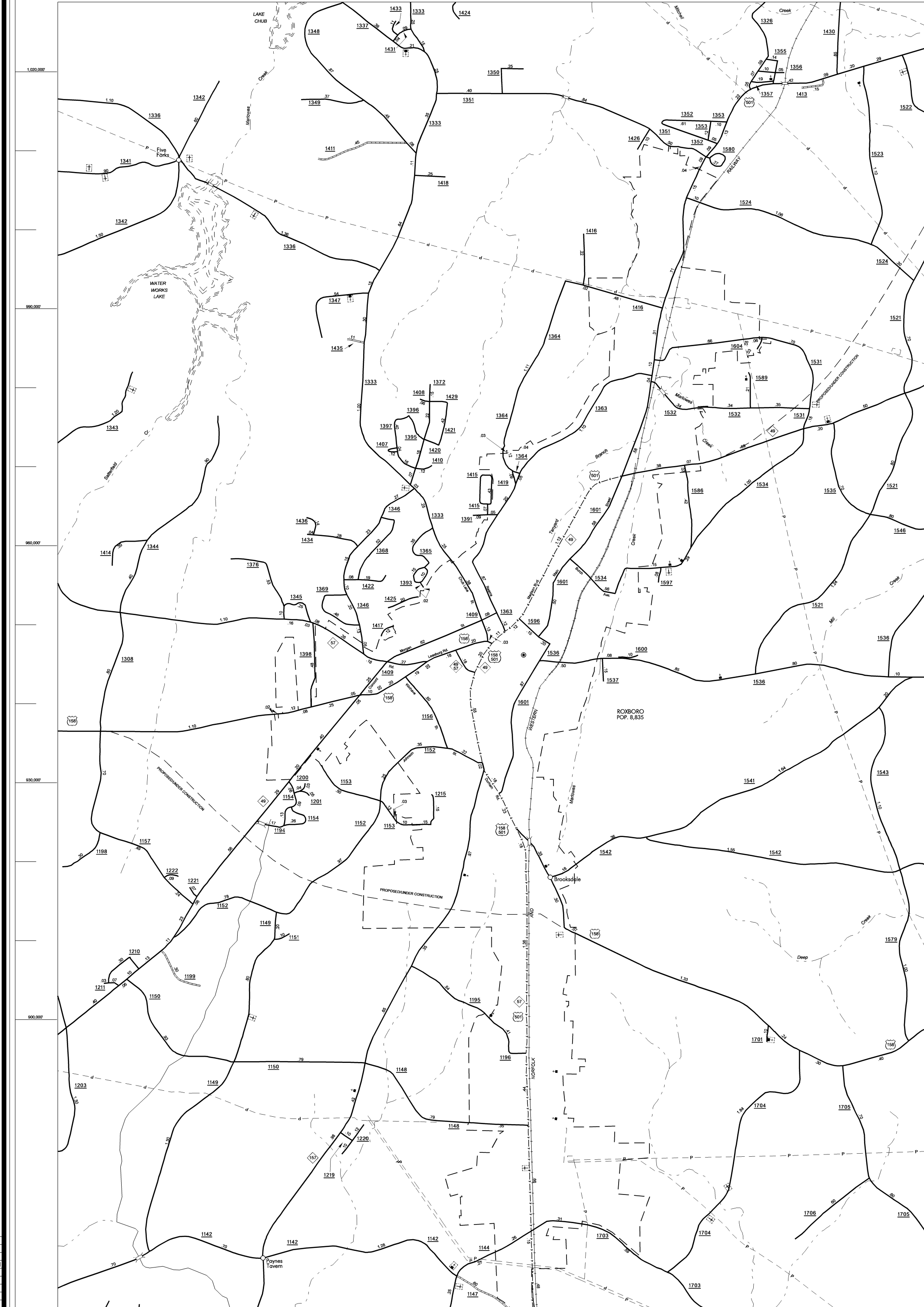


PERSON

COPIES OF THIS MAP ARE AVAILABLE
TO THE PUBLIC AT A NOMINAL COST
ADDRESS:
N.C. DEPARTMENT OF TRANSPORTATION
INFORMATION TECHNOLOGY SERVICES
3401 CHASE DRIVE, SUITE 200
RALEIGH, N.C. 27603

REVISED
5/2/02 R.L.N.
9/23/02 R.L.N.
12/18/02 R.L.N.
1/14/03 R.L.N.
3/28/03 R.L.N.
5/3/04 R.L.N.
8/17/04 R.L.N.
8/15/05 R.L.N.
12/13/05 M.E.M.
10/25/06 M.E.M.
5/4/07 M.E.M.
12/20/07 M.E.M.
6/9/08 M.E.M.

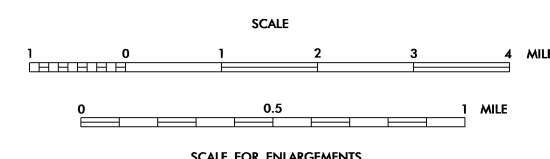


KEY TO COUNTY ROAD NUMBERS
ALSO NUMBERS 1001

NOTE: MAP INCLUDES ONLY STATE MAINTAINED ROADS
OR IMPORTANT NON-SYSTEM ROADS.
ROADS SHOWN AS OF JUN. 9, 2008

PERSON COUNTY

NORTH CAROLINA
PREPARED BY THE
NORTH CAROLINA DEPARTMENT OF TRANSPORTATION
INFORMATION TECHNOLOGY - IMG UNIT
IN COOPERATION WITH THE
U.S. DEPARTMENT OF TRANSPORTATION
FEDERAL HIGHWAY ADMINISTRATION



15,000 FOOT GRID BASED ON NORTH CAROLINA PLANE COORDINATE SYSTEM
POLYCONIC PROJECTION