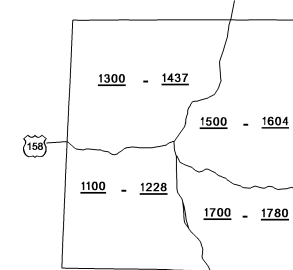
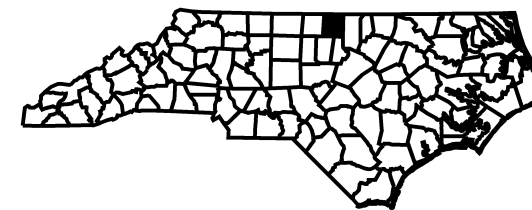
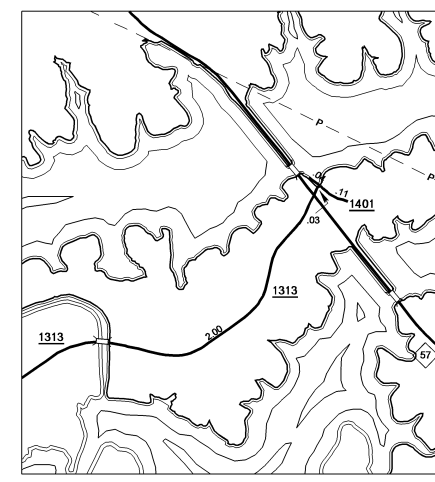
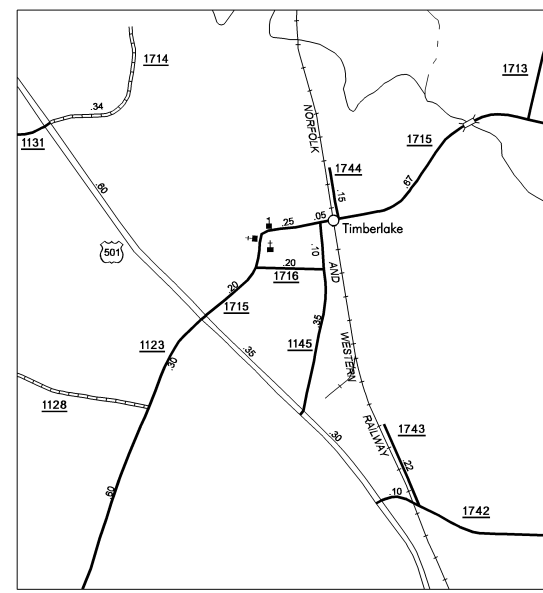
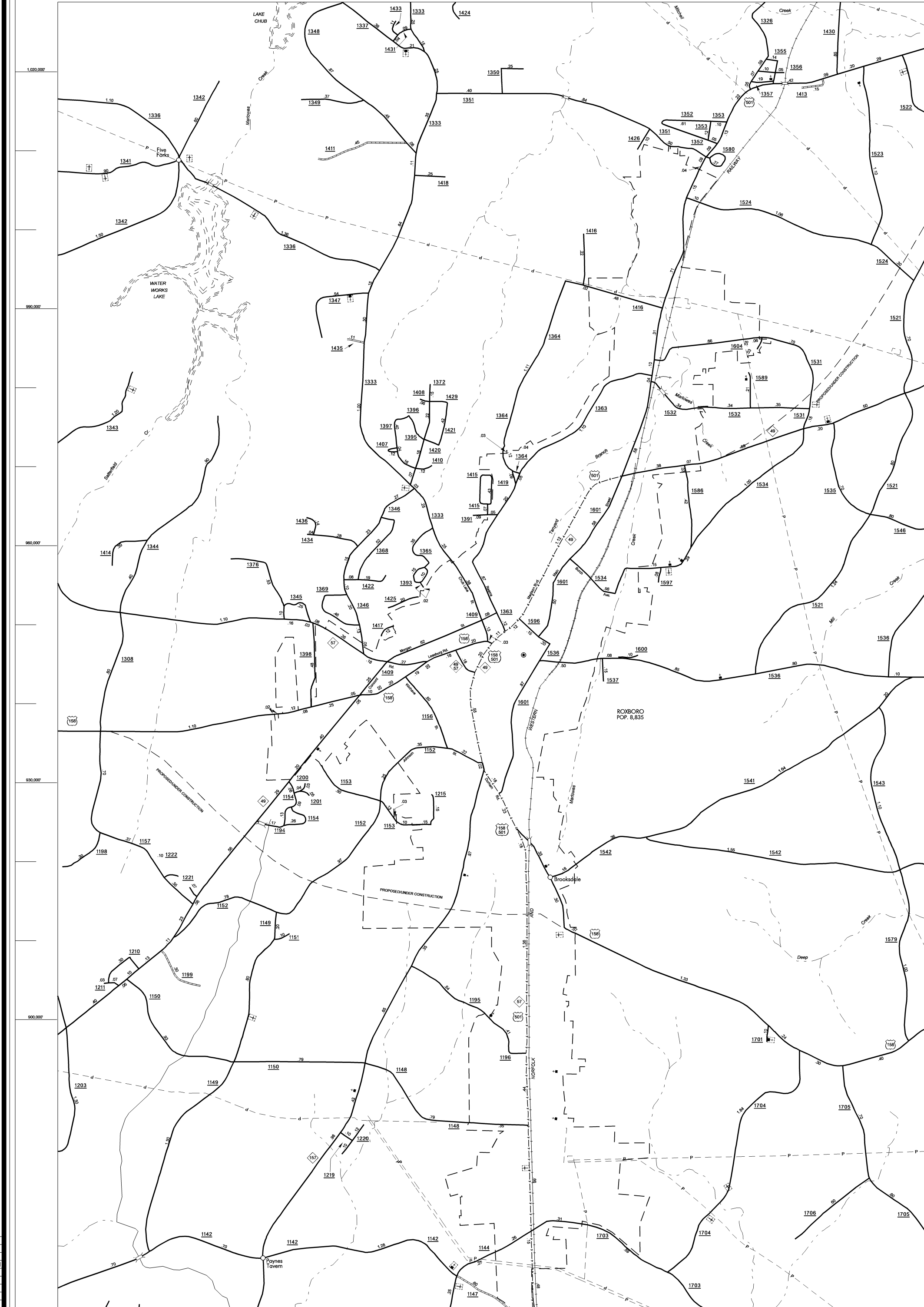


COPIES OF THIS MAP ARE AVAILABLE
TO THE PUBLIC AT A NOMINAL COST
ADDRESS:
N.C. DEPARTMENT OF TRANSPORTATION
INFORMATION SERVICES
3401 CARR SANDBURG CT.
RALEIGH, N.C. 27603

PERSON

REVISED
5/2/02 R.L.N.
9/23/02 R.L.N.
12/18/02 R.L.N.
1/14/03 R.L.N.
3/28/03 R.L.N.
5/3/04 R.L.N.
8/17/04 R.L.N.
8/15/05 R.L.N.
12/13/05 MEM
10/25/06 MEM
5/4/07 MEM



KEY TO COUNTY ROAD NUMBERS
ALSO NUMBERS 1001

NOTE: MAP INCLUDES ONLY STATE MAINTAINED ROADS
OR IMPORTANT NON-SYSTEM ROADS.
ROADS SHOWN AS OF MAY 4, 2007

PERSON COUNTY

NORTH CAROLINA

PREPARED BY THE
NORTH CAROLINA DEPARTMENT OF TRANSPORTATION
INFORMATION TECHNOLOGY - IMG UNIT
IN COOPERATION WITH THE
U.S. DEPARTMENT OF TRANSPORTATION
FEDERAL HIGHWAY ADMINISTRATION

