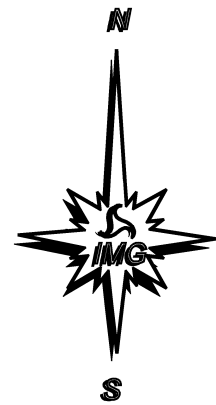
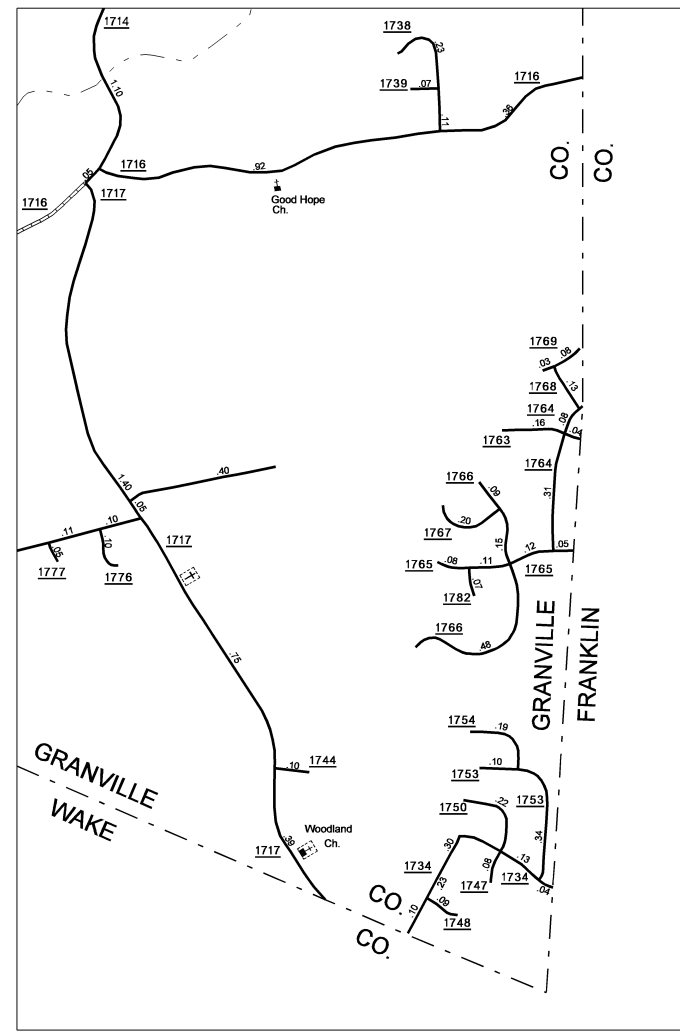
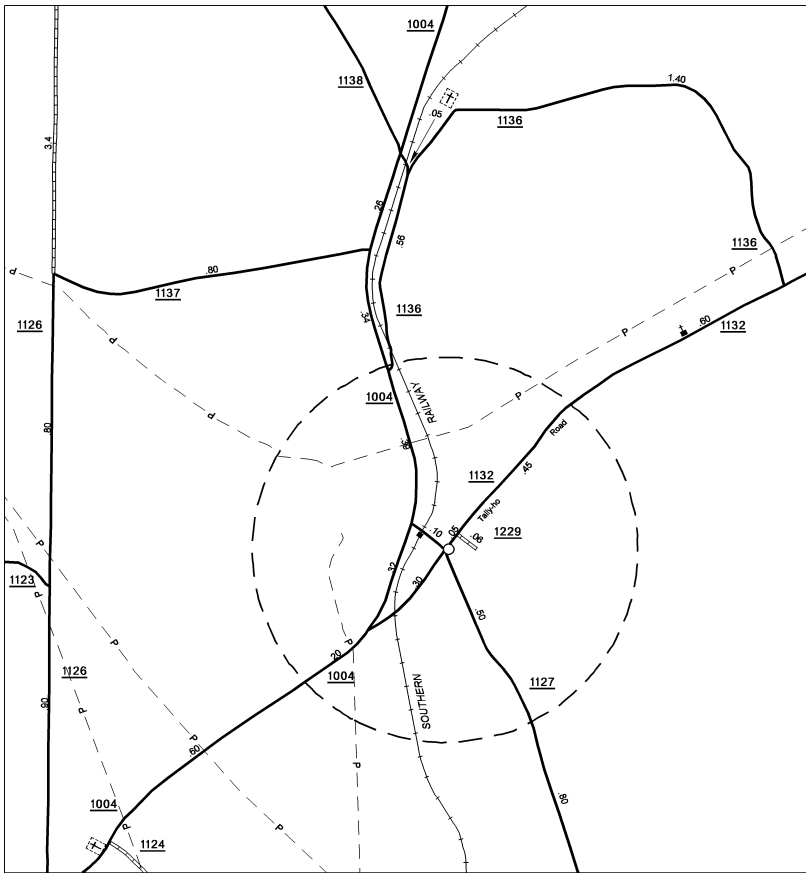
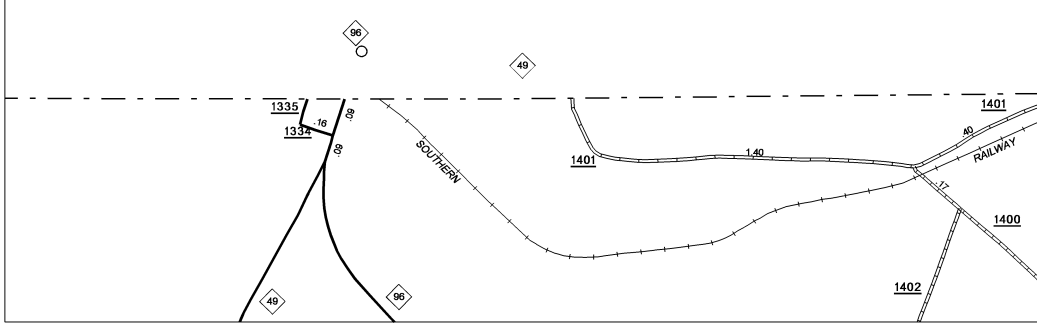
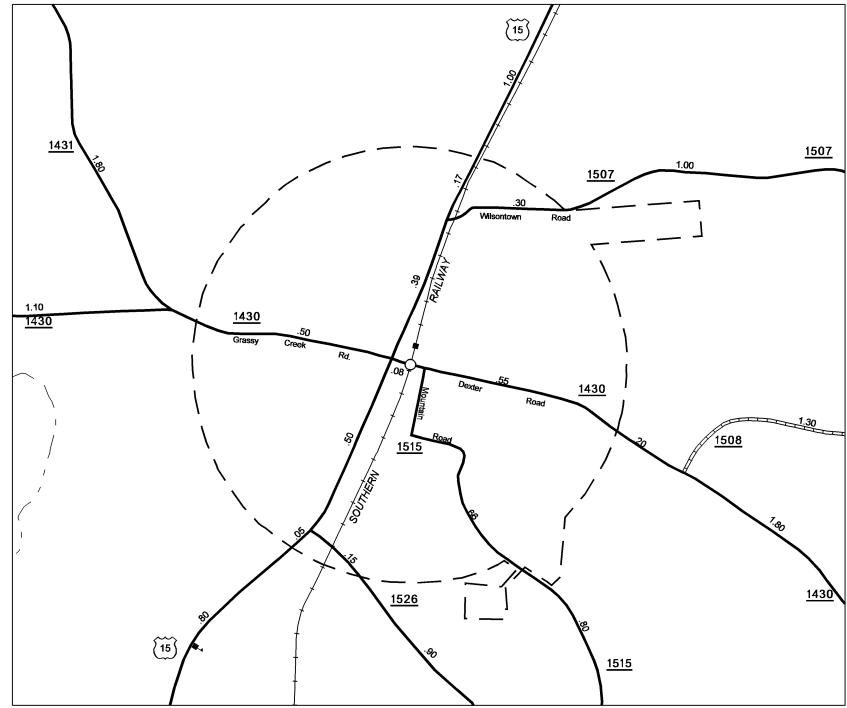
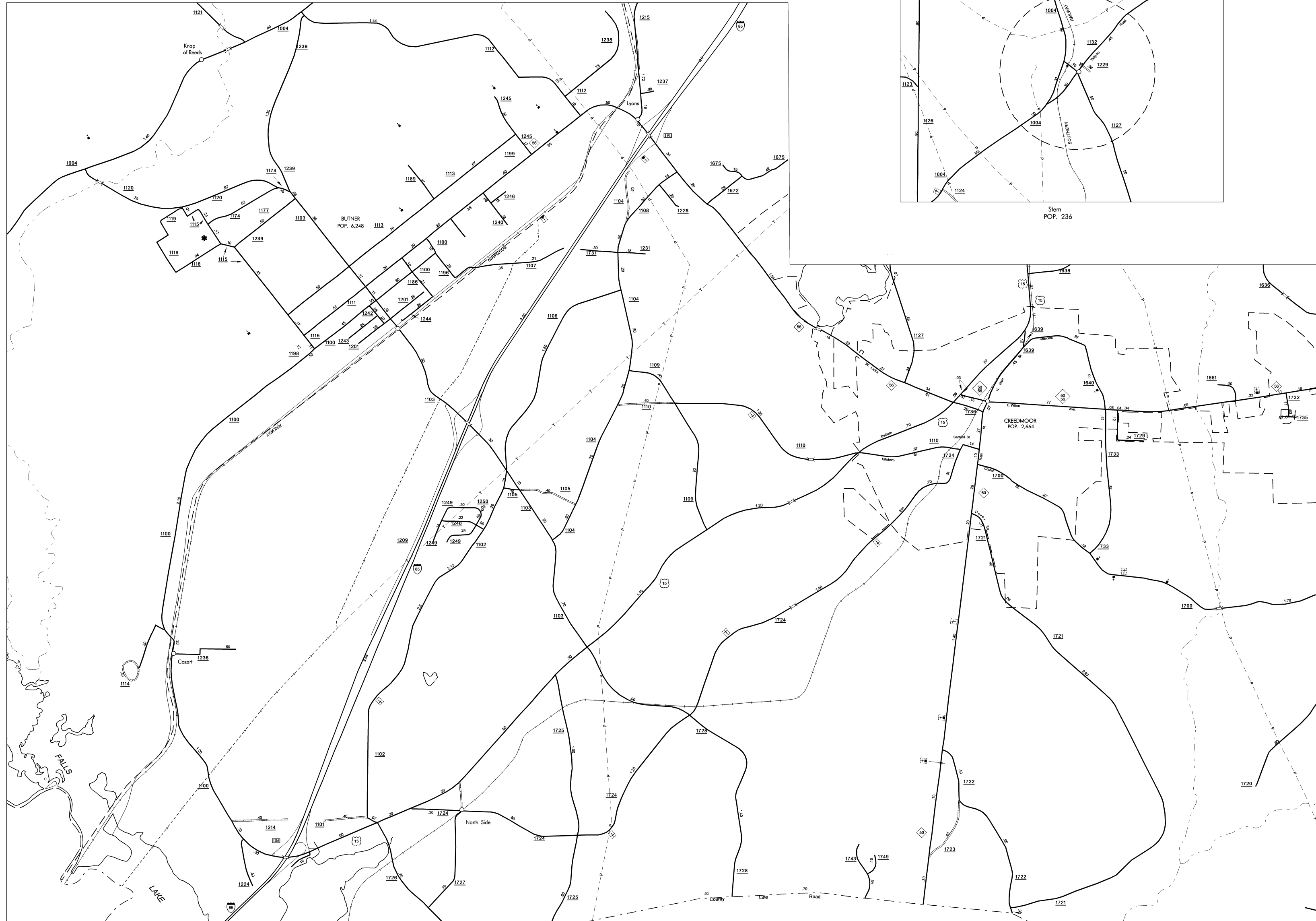


COPIES OF THIS MAP ARE AVAILABLE  
TO THE PUBLIC AT A NOMINAL COST  
ADDRESS:  
N.C. DEPARTMENT OF TRANSPORTATION  
INFORMATION AND MAP SERVICES  
3401 CHASE DRIVE, SUITE 200  
RALEIGH, N.C. 27603

REVISED  
8/31/04 RLN  
1/28/05 RLN  
2/16/06 RLN  
1/31/06 MEM  
10/24/06 MEM  
2/15/07 MEM  
5/4/07 MEM

GRANVILLE



ENLARGED MUNICIPAL AND SUBURBAN AREAS  
**GRANVILLE COUNTY**  
NORTH CAROLINA  
PREPARED BY THE  
NORTH CAROLINA DEPARTMENT OF TRANSPORTATION  
INFORMATION TECHNOLOGY - IMG UNIT  
IN COOPERATION WITH THE  
U.S. DEPARTMENT OF TRANSPORTATION  
FEDERAL HIGHWAY ADMINISTRATION



10,000 FOOT GRID BASED ON NORTH CAROLINA PLANE COORDINATE SYSTEM  
POLYCONIC PROJECTION