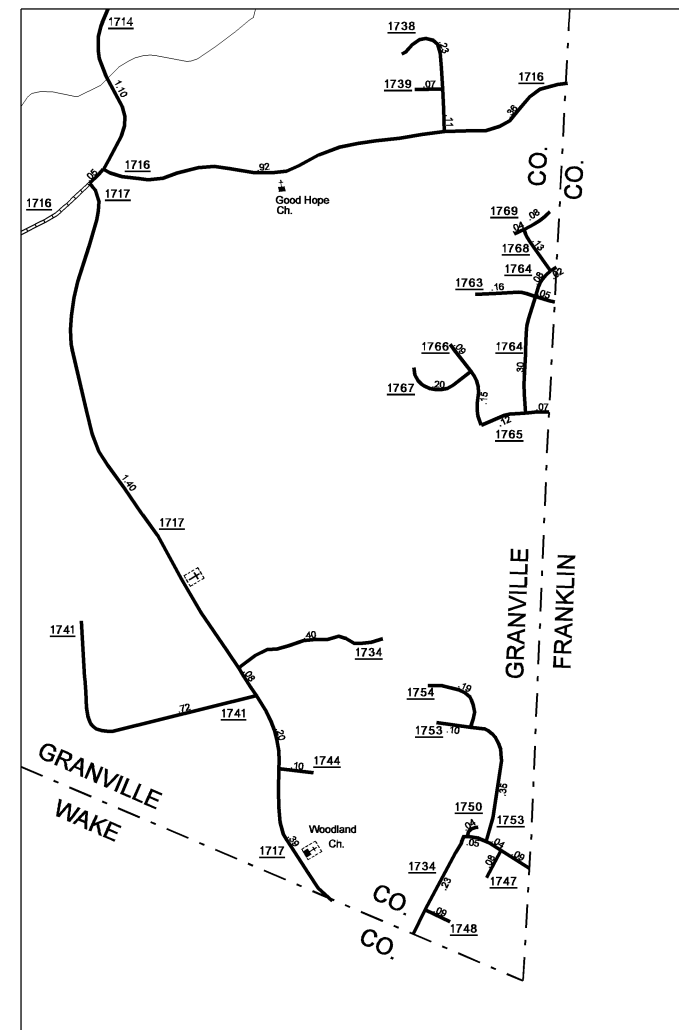
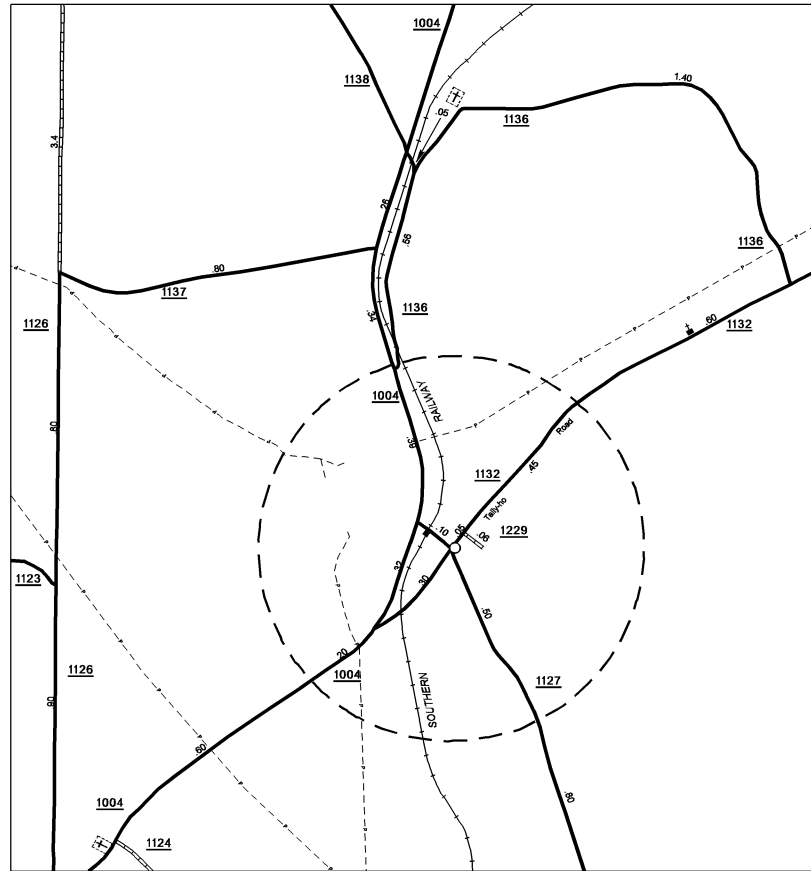
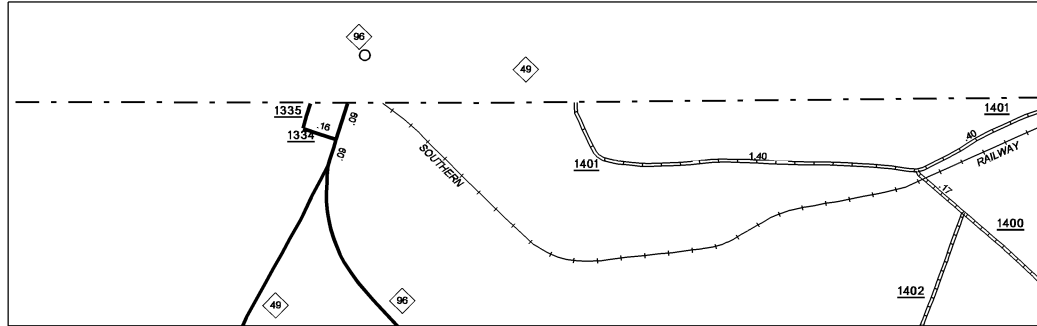
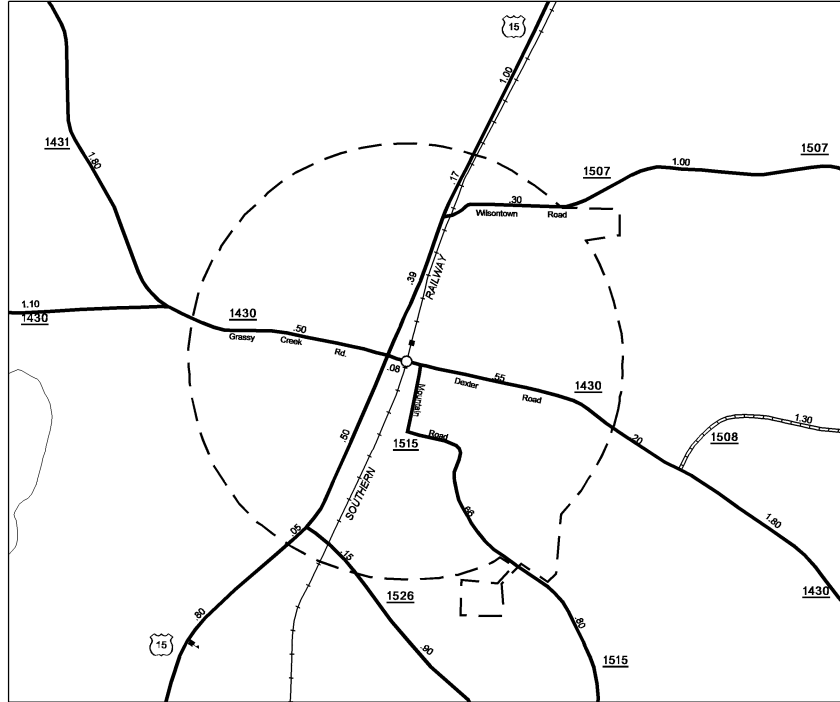
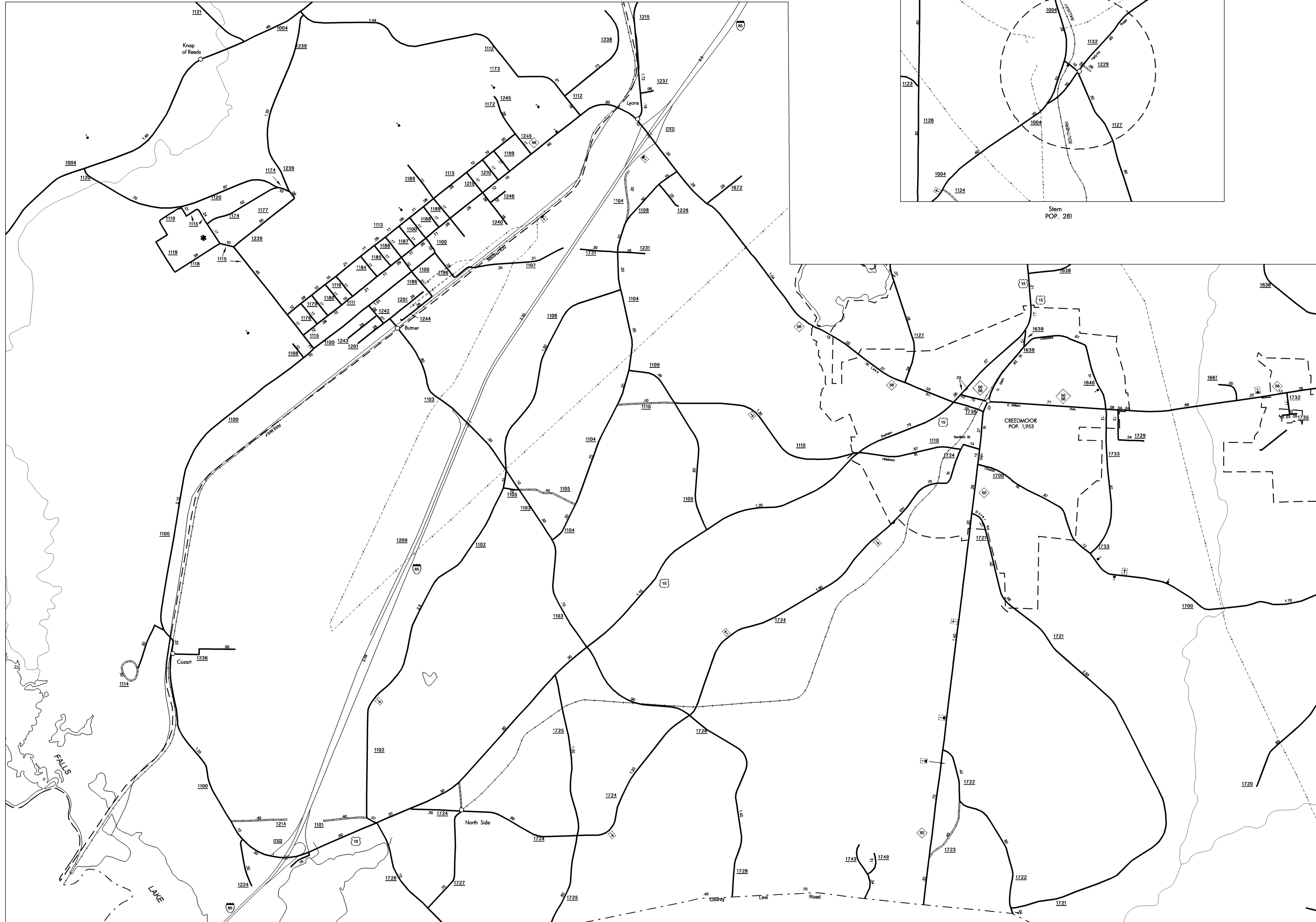


COPIES OF THIS MAP ARE AVAILABLE
TO THE PUBLIC AT A NOMINAL COST.
ADDRESS: MAPS, N.C. DEPARTMENT OF TRANSPORTATION
DIVISION OF HIGHWAYS
RALEIGH, NORTH CAROLINA 27611

REVISED
11/1/95 RLN
6/18/98 JUT
4/7/99 JAL
11/15/01
2/28/02 RLN
5/2/02 RLN
7/18/02 RLN
9/15/02 RLN
12/16/02 RLN



ENLARGED MUNICIPAL AND SUBURBAN AREAS
GRANVILLE COUNTY
NORTH CAROLINA
PREPARED BY THE
NORTH CAROLINA DEPARTMENT OF TRANSPORTATION
DIVISION OF HIGHWAYS - GIS UNIT

IN COOPERATION WITH THE
U.S. DEPARTMENT OF TRANSPORTATION
FEDERAL HIGHWAY ADMINISTRATION

