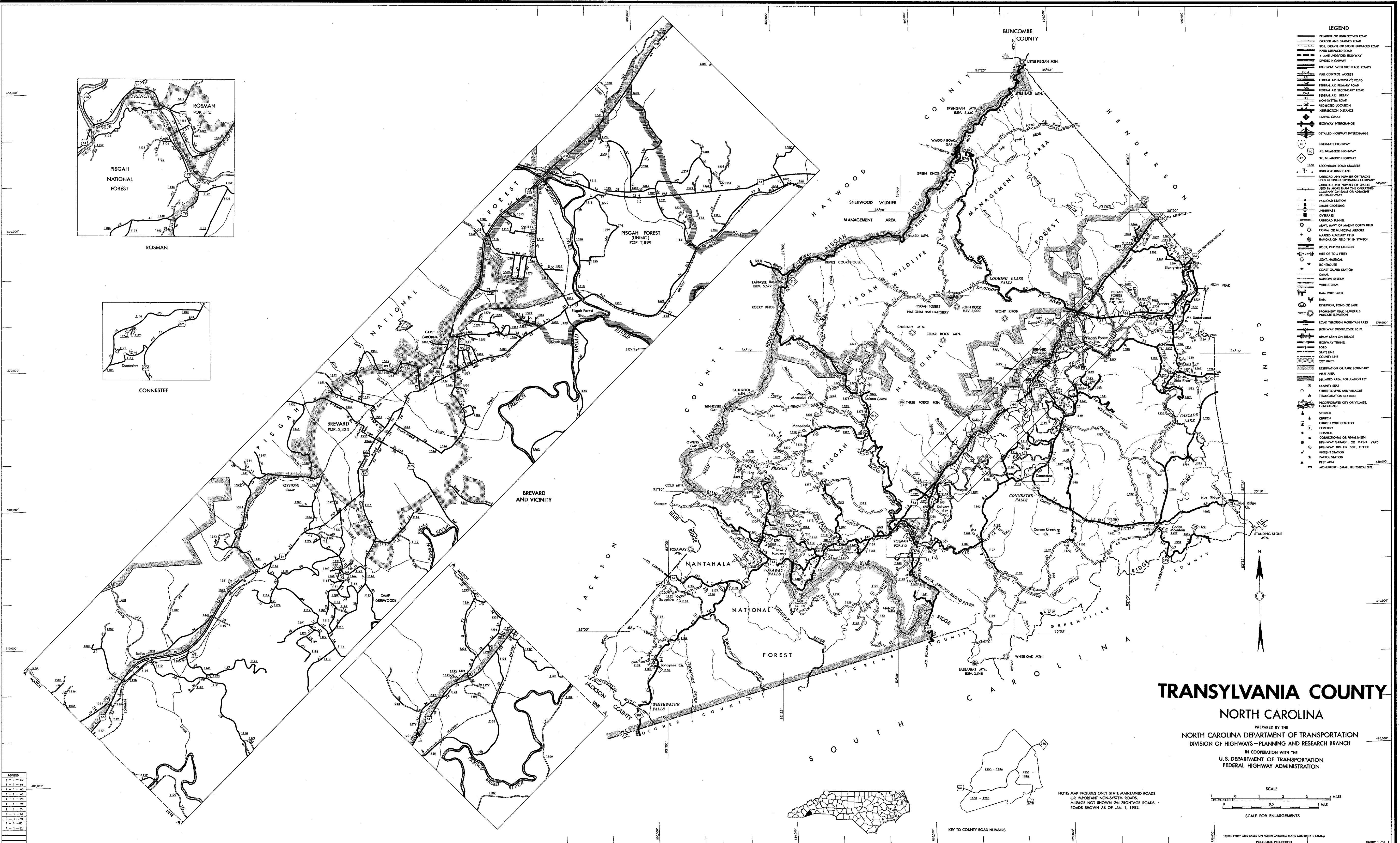


COPY OF THIS MAP IS AVAILABLE
TO THE PUBLIC AT A NOMINAL COST.
ADDRESS: N.C. DEPARTMENT OF TRANSPORTATION
RALEIGH, NORTH CAROLINA 27601

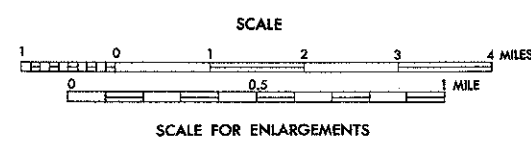
TRANSPORTATION

REVISED
1-1-42
1-1-44
1-1-46
1-1-48
1-1-50
1-1-52
1-1-54
1-1-56
1-1-58
1-1-60
1-1-62



- LEGEND**
- PRIMITIVE OR IMPROVED ROAD
 - GRADED AND DRAINED ROAD
 - SOIL, GRAVEL OR STONE SURFACED ROAD
 - HARD SURFACED ROAD
 - 4 LANE UNDIVIDED HIGHWAY
 - DIVIDED HIGHWAY
 - HIGHWAY WITH FRONTAGE ROADS
 - FULL CONTROL ACCESS
 - FEDERAL AID INTERSTATE ROAD
 - FEDERAL AID PRIMARY ROAD
 - FEDERAL AID SECONDARY ROAD
 - FEDERAL AID URBAN
 - NON-SYSTEM ROAD
 - PROJECTED LOCATION
 - INTERSECTION INSTANCE
 - TRAFFIC CIRCLE
 - HIGHWAY INTERCHANGE
 - DETAILED HIGHWAY INTERCHANGE
 - INTERSTATE HIGHWAY
 - U.S. NUMBERED HIGHWAY
 - N.C. NUMBERED HIGHWAY
 - SECONDARY ROAD NUMBERS
 - UNDERGROUND CABLE
 - RAILROAD, ANY NUMBER OF TRACKS
 - USED BY SPECIAL OPERATING COMPANY
 - RAILROAD, ANY NUMBER OF TRACKS
 - USED BY SHORT LINE OR EXISTING COMPANY ON SAME OR ADJACENT RIGHTS-OF-WAY
 - RAILROAD STATION
 - GRADE CROSSING
 - UNDERPASS
 - OVERPASS
 - RAILROAD TUNNEL
 - ARMY, NAVY OR MARINE CORPS FIELD
 - CORRAL OR MUNICIPAL AIRPORT
 - ARMED AUXILIARY FIELD
 - HANGAR ON FIELD "B" IN STAMBO
 - DOCK, PIER OR LANDING
 - FREE OR TOLL FERRY
 - LIGHT, NAUTICAL
 - LIGHTHOUSE
 - COAST GUARD STATION
 - CANAL
 - NARROW STREAM
 - WIDE STREAM
 - DAM WITH LOCK
 - DAM
 - RESERVOIR, POND OR LAKE
 - POCKET RESERVOIR
 - ROAD THROUGH MOUNTAIN PASS
 - HIGHWAY BRIDGE, OVER 20 FT.
 - DRAW SPAN ON BRIDGE
 - HIGHWAY TUNNEL
 - PIED
 - STATE LINE
 - COUNTY LINE
 - CITY LIMITS
 - RESERVATION OR PARK BOUNDARY
 - INSET AREA
 - DELIMITED AREA, POPULATION EST.
 - COUNTY SEAT
 - OTHER TOWNS AND VILLAGES
 - TRANSMISSION STATION
 - INCORPORATED CITY OR VILLAGE, GENERALIZED
 - SCHOOL
 - CHURCH
 - CHURCH WITH CHANCEL
 - CHURCH
 - CORRECTIONAL OR PENAL INST.
 - HIGHWAY GARAGE, OR MARINE YARD
 - HIGHWAY DIV. OR DIST. OFFICE
 - WEIGHT STATION
 - PATROL STATION
 - BEST AREA
 - MONUMENT—SMALL HISTORICAL SITE

TRANSPORTATION
NORTH CAROLINA
PREPARED BY THE
NORTH CAROLINA DEPARTMENT OF TRANSPORTATION
DIVISION OF HIGHWAYS—PLANNING AND RESEARCH BRANCH
IN COOPERATION WITH THE
U.S. DEPARTMENT OF TRANSPORTATION
FEDERAL HIGHWAY ADMINISTRATION



NOTE: MAP INCLUDES ONLY STATE MAINTAINED ROADS
OR IMPORTANT NON-SYSTEM ROADS.
MILEAGE NOT SHOWN ON FRONTAGE ROADS.
ROADS SHOWN AS OF JAN. 1, 1952.

KEY TO COUNTY ROAD NUMBERS