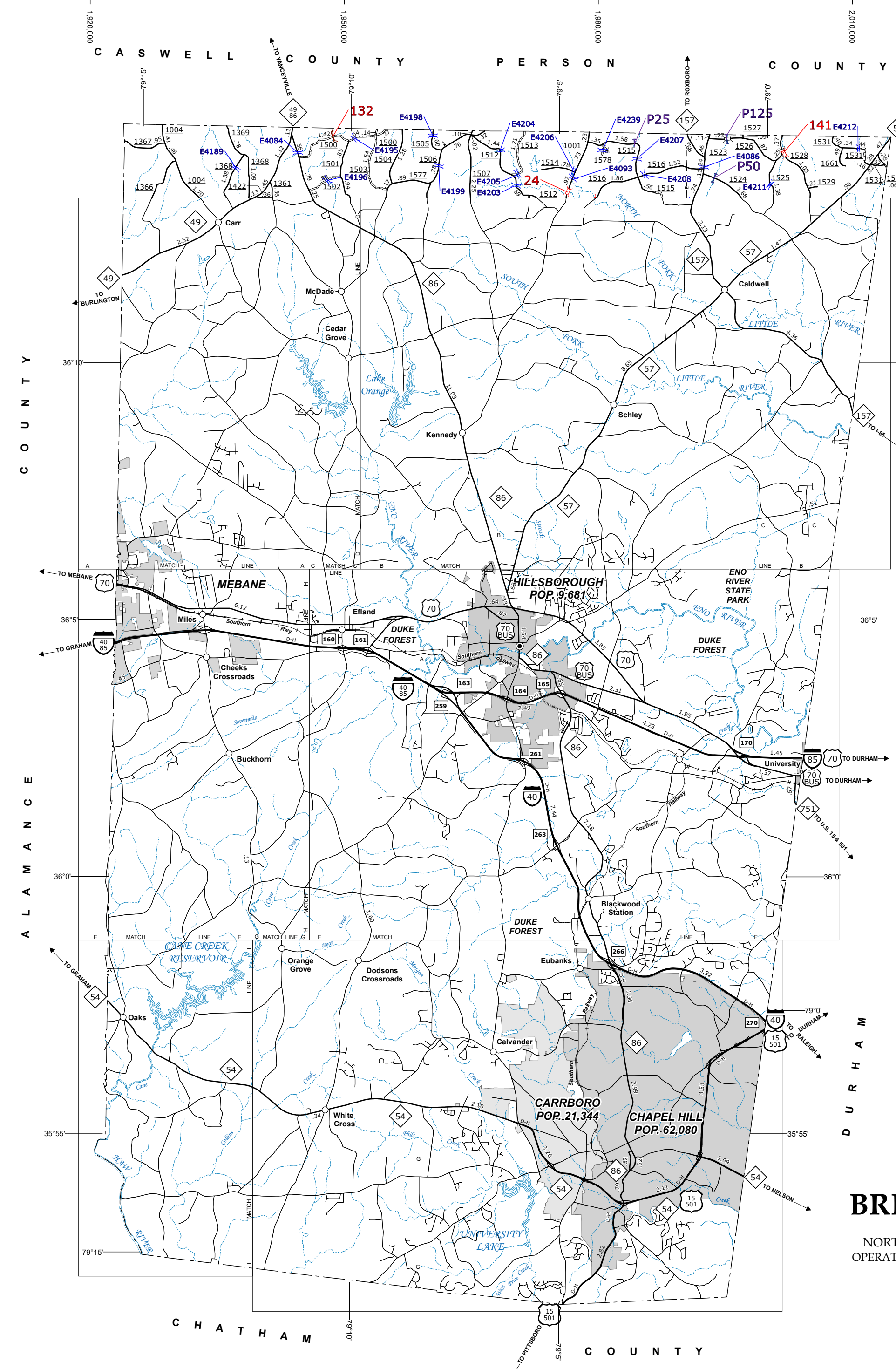
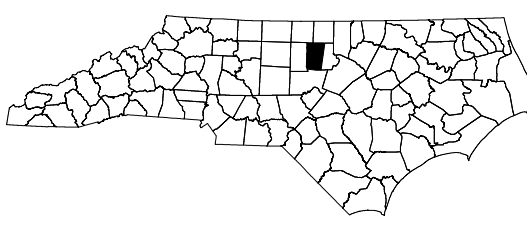
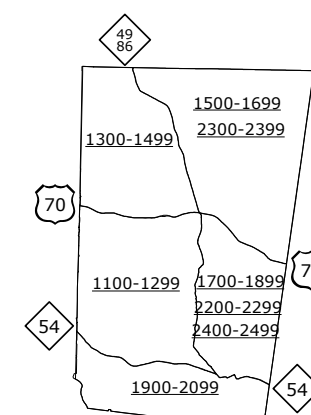
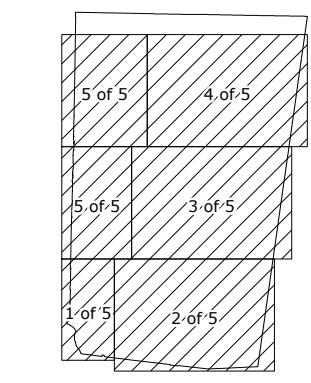
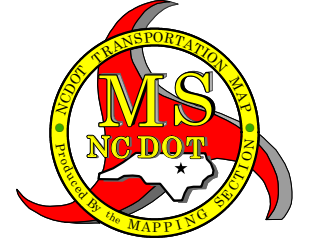
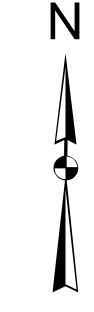


Oak and Vicinity

- BRIDGE
- CITY BRIDGE
- CITY SIGN
- CITY CULVERT
- CITY CULVERT
- DRIVE BRIDGE
- PEDESTRIAN BRIDGE
- NON-NBIS PIPE
- FEDERAL BRIDGE
- NON-SYSTEM MAINT BY NCDOT
- CANTILEVER SIGN
- PRIVATE STRUCTURE
- NCDOT OVERPASS STRUCTURE
- PAVEMENT ON PILES
- CITY PIPE
- PIPE
- RAILROAD BRIDGE
- OVERHEAD SIGN
- TUNNEL
- PEDESTRIAN UNDERPASS
- VEHICULAR UNDERPASS
- PEDESTRIAN WALKWAY
- TRIPLE SIGN

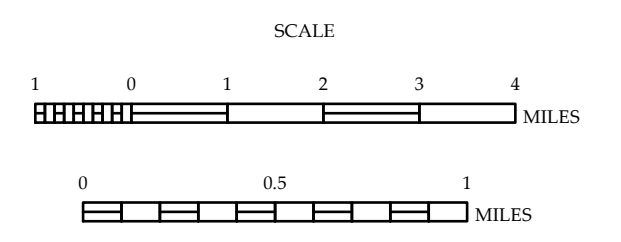


- LEGEND**
- UNPAVED SURFACED ROAD
  - HARD SURFACED ROAD
  - NON-SYSTEM ROADS
  - DIVIDED HIGHWAY FRONTAGE ROADS
  - PROJECTED LOCATION
  - BLUE RIDGE PARKWAY
  - INTERSECTION DISTANCE
  - TRAFFIC CIRCLE
  - DETAILED HIGHWAY INTERCHANGE
  - FORD
  - INTERSTATE HIGHWAY
  - U.S. NUMBERED HIGHWAY
  - N.C. NUMBERED HIGHWAY
  - U.S. NUMBERED BICYCLE ROUTE
  - N.C. NUMBERED BICYCLE ROUTE
  - INTERSTATE INTERCHANGE NUMBER
  - SECONDARY ROAD NUMBER
  - UTILITY LINES
  - RAILROAD
  - RAILROAD STATION
  - GRADE CROSSING
  - URBAN EXTENSION LINE
  - INSET AREA
  - NATIONAL FOREST BOUNDARY
  - RESERVATION OR PARK BOUNDARY
  - STATE FOREST BOUNDARY
  - STATE GAZETTED BOUNDARY
  - FEDERAL GAZETTED BOUNDARY
  - MILITARY RESERVATION BOUNDARY
  - STATE LINE
  - COUNTY LINE
  - CITY LIMIT
  - FERRY ROUTE
  - NARROW CREEK OR STREAM
  - WIDE RIVER OR CREEK
  - RESERVOIR, POND OR LAKE W/ ISLAND
  - DAM OR DAM WITH LOCK
  - WATERFALL
  - SWAMP
  - COMMUNITY, TOWN OR CITY CENTER
  - COUNTY SEAT
  - STATE CAPITAL
  - SCHOOL
  - COLLEGE OR UNIVERSITY
  - HOSPITAL
  - COAST GUARD STATION
  - CHURCH
  - CHURCH WITH CEMETERY
  - CEMETERY
  - PATROL STATION
  - CORRECTION OR PENAL INSTITUTION
  - QUARRY
  - MINE OR PIT
  - HIGHWAY GARAGE OR MAINT. YARD
  - HIGHWAY DIV. OR DIST. OFFICE
  - POST OFFICE
  - MILITARY POST
  - WILDLIFE REFUGE
  - WEIGH STATION
  - FAIRGROUNDS
  - HISTORICAL SITE
  - POINTS OF INTEREST
  - STATE FOREST
  - LIGHTHOUSE
  - MONUMENTAL SUMMIT
  - OVERLOOK
  - GEODETIC MARKER
  - REST AREA
  - VISITOR CTR. REST AREA
  - WELCOME CTR. REST AREA
  - AIRPORT
  - MILITARY AIRPORT
  - HELIPORT



# ORANGE COUNTY NORTH CAROLINA BRIDGE LOCATION MAP

PREPARED BY THE  
NORTH CAROLINA DEPARTMENT OF TRANSPORTATION  
OPERATIONS PROGRAM MANAGEMENT UNIT - MAPPING SECTION  
IN COOPERATION WITH THE  
U.S. DEPARTMENT OF TRANSPORTATION  
FEDERAL HIGHWAY ADMINISTRATION



SCALE FOR ENLARGEMENTS  
10,000 FOOT GRID BASED ON NORTH CAROLINA PLANE COORDINATE SYSTEM  
LAMBERT CONFORMAL CONIC PROJECTION

COPIES OF THIS MAP ARE AVAILABLE  
FOR PURCHASE AT A PUBLIC NOMINAL COST.  
ADDRESS:  
N.C. DEPARTMENT OF TRANSPORTATION  
MSAU - MAPPING SECTION  
4809 BERRY LANE  
Raleigh, NC 27609

NOTE: Map includes only state maintained roads  
and important non-system roads. Map also includes  
federal, state, and local roads. Map also includes  
federal agencies, and are shown in their approximate  
information on this map is current up to June 2022.