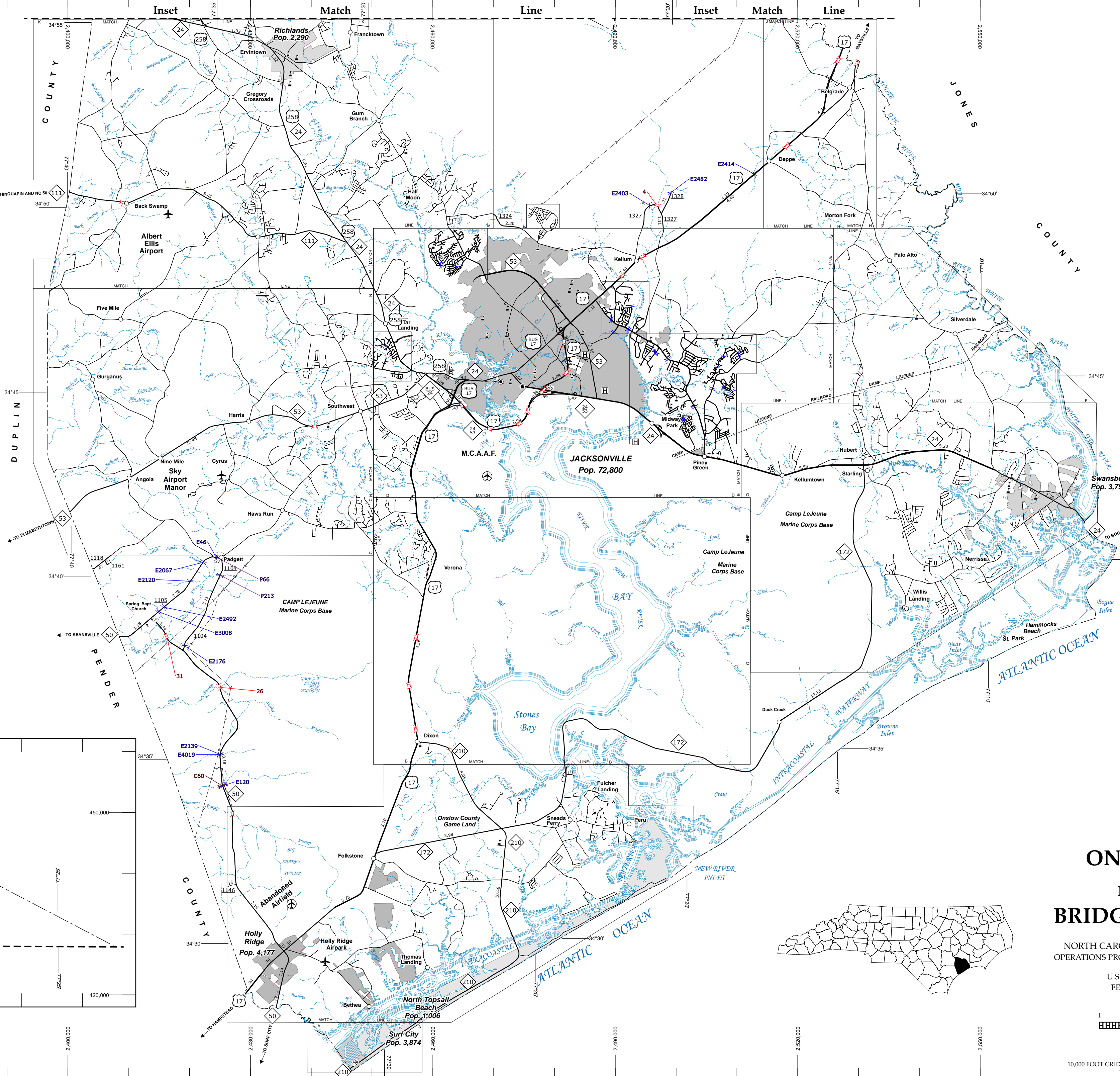
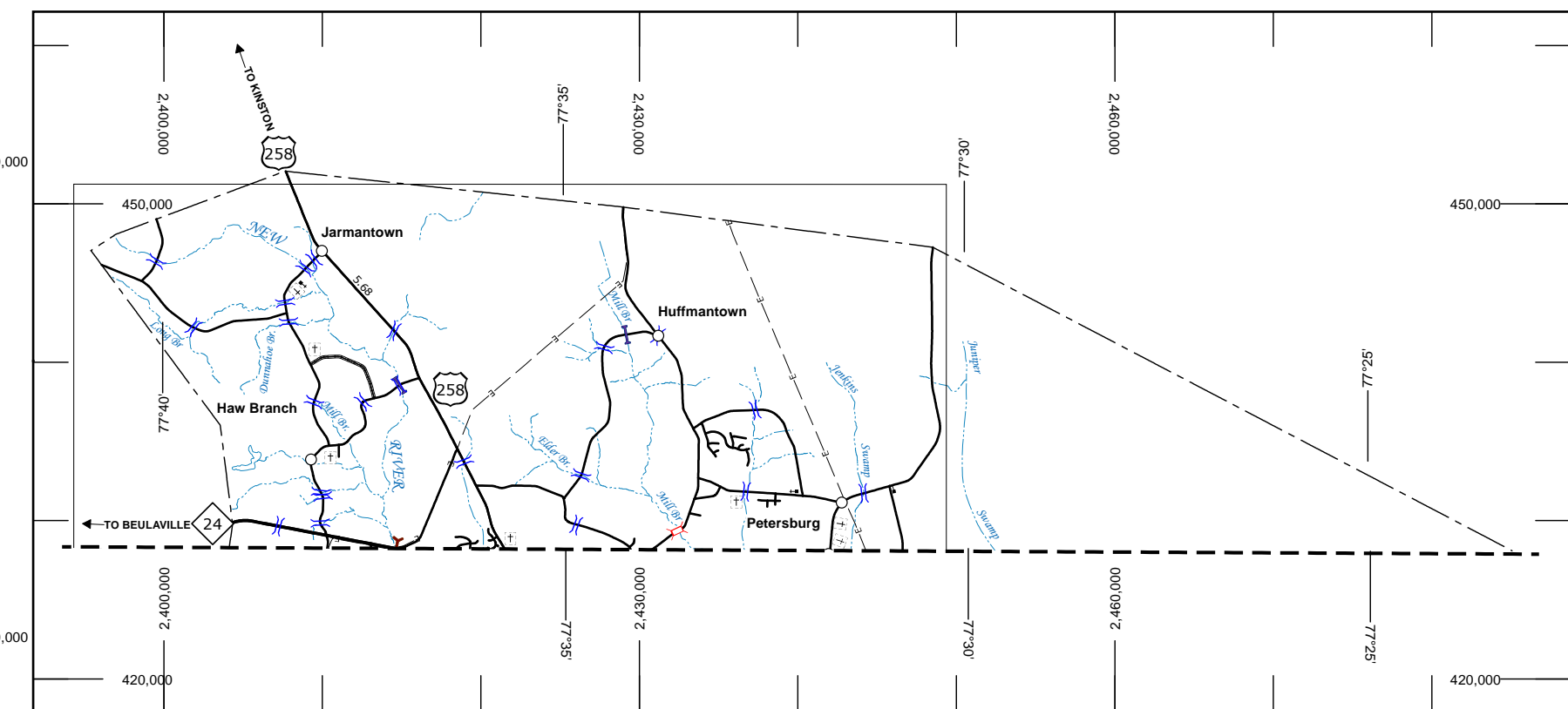
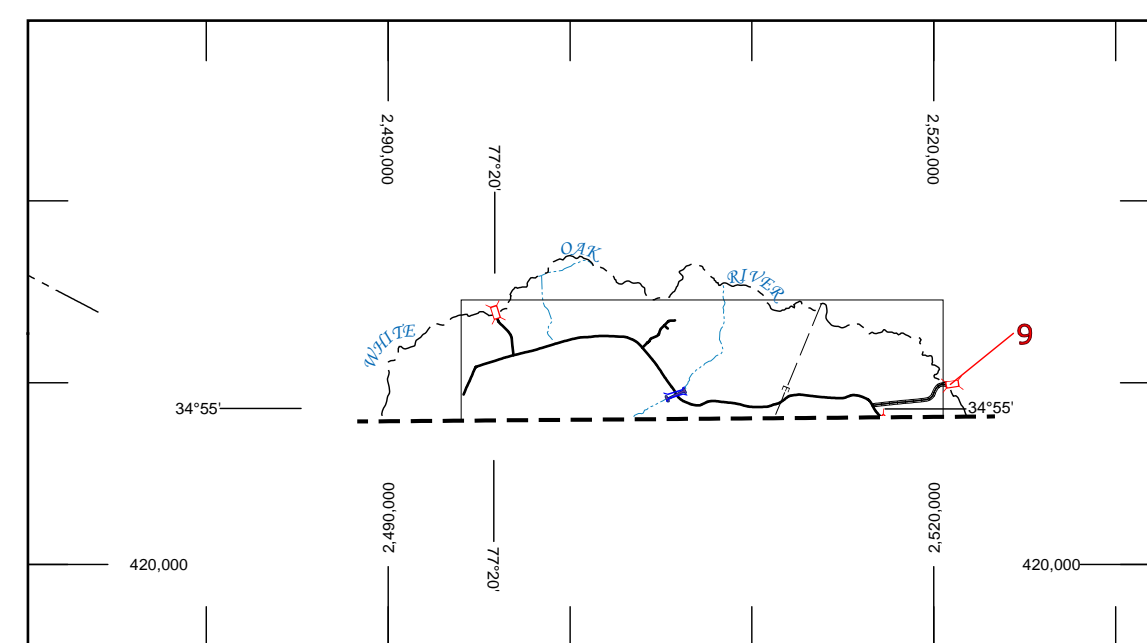
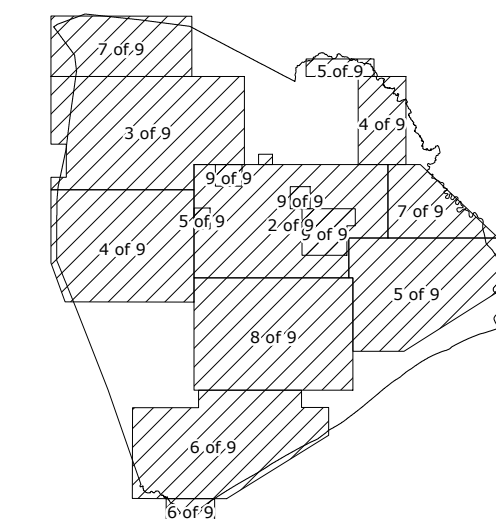
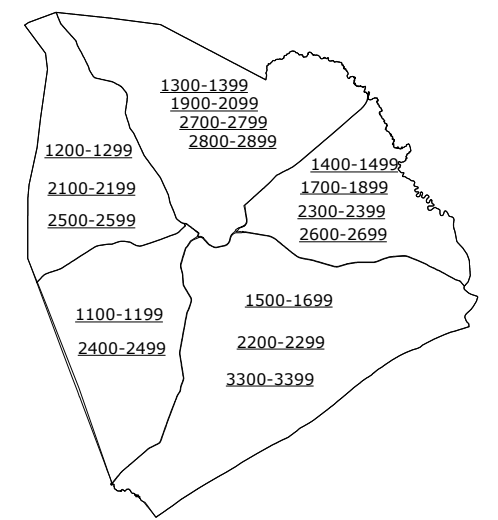


The MSJUL's goal is to provide the most accurate and current information possible. Map data is compiled from numerous sources including aerial photography, GIS data, and other available information. As a result, there may be some minor discrepancies between this map and other maps. For additional information, visit <http://www.ncdot.gov/transportation/MSJUL/> and click on Data Providers or contact us at (919) 815-8489.

COPIES OF THIS MAP ARE AVAILABLE FOR PURCHASE AT A PUBLIC NOMINAL COST. ADDRESS: N.C. DEPARTMENT OF TRANSPORTATION, MSJUL MAPPING SECTION, 4801 BERNLIE RD., RALEIGH, NC 27606



- LEGEND**
- UNPAVED SURFACED ROAD
 - HARD SURFACED ROAD
 - NON-SYSTEM ROADS
 - DIVIDED HIGHWAY FRONTAGE ROADS
 - PROJECTED LOCATION
 - BLUE RIDGE PARKWAY
 - INTERSECTION DISTANCE
 - TRAFFIC CIRCLE
 - DETAILED HIGHWAY INTERCHANGE
 - FORD
 - INTERSTATE HIGHWAY
 - U.S. NUMBERED HIGHWAY
 - N.C. NUMBERED HIGHWAY
 - U.S. NUMBERED BICYCLE ROUTE
 - N.C. NUMBERED BICYCLE ROUTE
 - INTERSTATE INTERCHANGE NUMBER
 - SECONDARY ROAD NUMBER
 - UTILITY LINES
 - RAILROAD
 - RAILROAD STATION
 - GRADE CROSSING
 - URBAN EXTENSION LINE
 - NATIONAL FOREST BOUNDARY
 - RESERVATION OR PARK BOUNDARY
 - STATE FOREST BOUNDARY
 - STATE GAZETTED BOUNDARY
 - FEDERAL GAZETTED BOUNDARY
 - MILITARY RESERVATION BOUNDARY
 - STATE LINE
 - COUNTY LINE
 - CITY LIMIT
 - FERRY ROUTE
 - NARROW CREEK OR STREAM
 - WIDE RIVER OR CREEK
 - RESERVOIR, POND OR LAKE W/ ISLAND
 - DAM OR DAM WITH LOCK
 - WATERFALL
 - SWAMP
 - COMMUNITY, TOWN OR CITY CENTER
 - COUNTY SEAT
 - STATE CAPITAL
 - SCHOOL
 - COLLEGE OR UNIVERSITY
 - HOSPITAL
 - COAST GUARD STATION
 - CHURCH
 - CHURCH WITH CEMETERY
 - CEMETERY
 - PATROL STATION
 - CORRECTION OR PENAL INSTITUTION
 - QUARRY
 - MINE OR PIT
 - HIGHWAY GARAGE OR MAINT. YARD
 - HIGHWAY BUS OR DIST. OFFICE
 - POST OFFICE
 - MILITARY POST
 - WILDLIFE REFUGE
 - WEIGH STATION
 - FARMS
 - HISTORICAL SITE
 - POINTS OF INTEREST
 - STATE FOREST
 - LIGHTHOUSE
 - MOUNTAIN SUMMIT
 - OVERLOOK
 - GENETIC MARKER
 - REST AREA
 - VISITOR CENTER AREA
 - WELCOME CENTER AREA
 - AIRPORT
 - MILITARY AIRPORT
 - HELIPORT

ONSLow COUNTY
NORTH CAROLINA
BRIDGE LOCATION MAP

PREPARED BY THE
 NORTH CAROLINA DEPARTMENT OF TRANSPORTATION
 OPERATIONS PROGRAM MANAGEMENT UNIT - MAPPING SECTION
 IN COOPERATION WITH THE
 U.S. DEPARTMENT OF TRANSPORTATION
 FEDERAL HIGHWAY ADMINISTRATION

SCALE
 1 0 1 2 3 4
 MILES