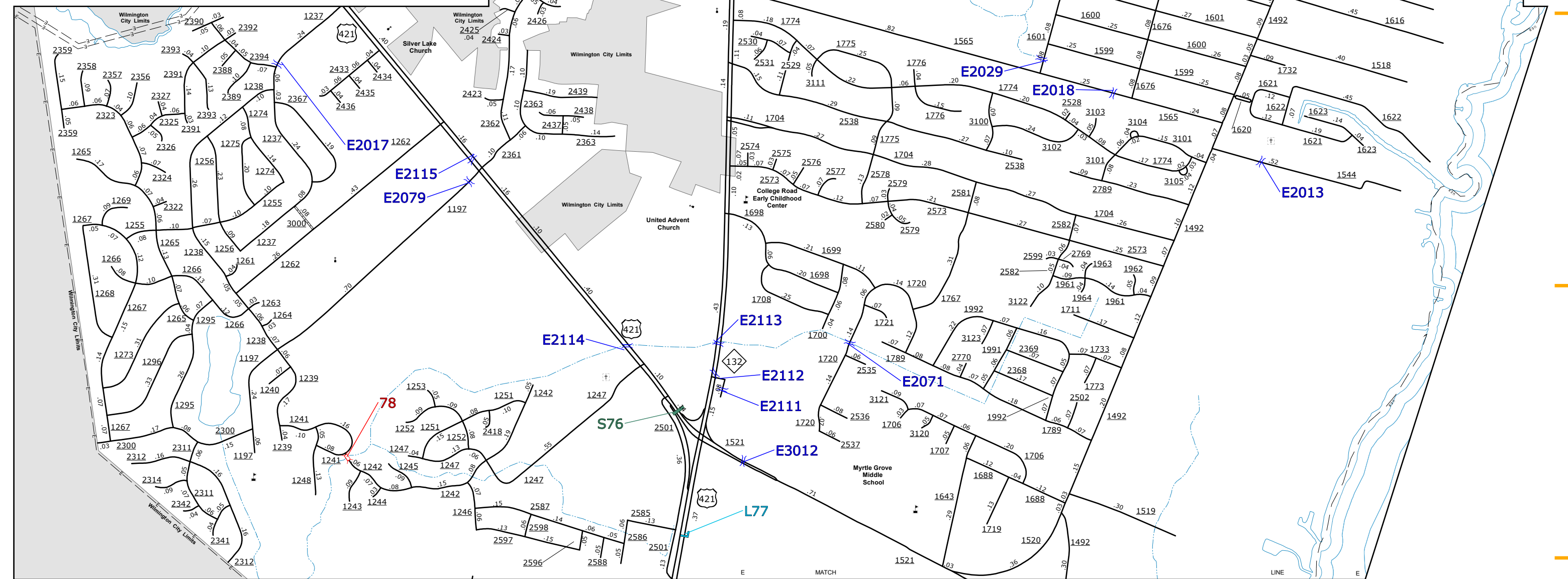
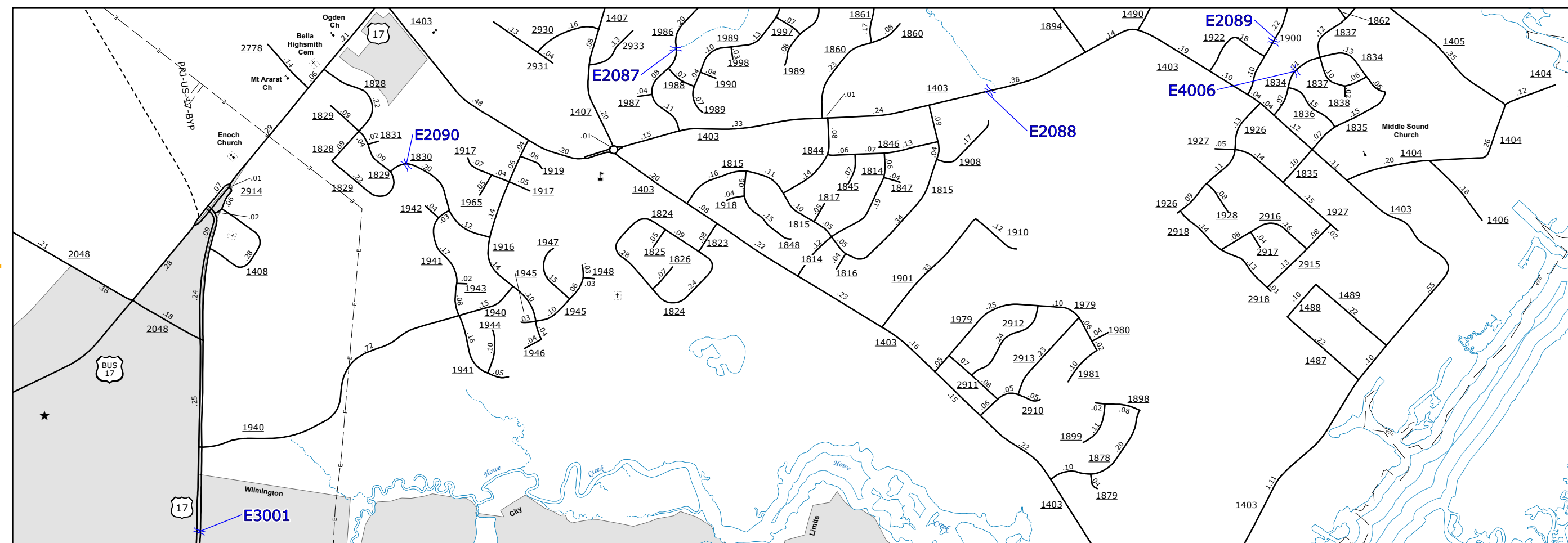


Wrightsboro



Myrtle Grove Vicinity



Ogden Elementary Area

The Mapping Section's goal is to provide the most accurate and current information possible. Map data is compiled from various sources including aerial photography, ground surveys, and other data. The information is subject to change without notice. For additional information, visit the Mapping Section website at <http://www.ncdot.gov/transportation/mau> or contact us by phone at (919) 855-8480.

COPIES OF THIS MAP ARE AVAILABLE AT NO CHARGE TO THE PUBLIC AT THE ADDRESS LISTED BELOW.

- BRIDGE
- CITY BRIDGE
- CITY SIGN
- CITY CULVERT
- CULVERT
- DRAW BRIDGE
- PEDESTRIAN BRIDGE
- NON-NHS PIPE
- FERRY RAMP
- FEDERAL BRIDGE
- NON-SYSTEM MAINT BY NCDOT
- CANTILEVER SIGN
- PRIVATE STRUCTURE
- NCDOT OVERPASS STRUCTURE
- PAVEMENT ON PILES
- CITY PIPE
- PIPE
- RAILROAD BRIDGE
- OVERHEAD SIGN
- TUNNEL
- PEDESTRIAN UNDERPASS
- VEHICLE UNDERPASS
- PEDESTRIAN WALKWAY
- T-POLE SIGN

ENLARGED MUNICIPAL AND SUBURBAN AREAS
NEW HANOVER COUNTY
NORTH CAROLINA
BRIDGE LOCATION MAP

PREPARED BY THE
 NORTH CAROLINA DEPARTMENT OF TRANSPORTATION
 OPERATIONS PROGRAM MANAGEMENT UNIT - MAPPING SECTION
 IN COOPERATION WITH THE
 U.S. DEPARTMENT OF TRANSPORTATION
 FEDERAL HIGHWAY ADMINISTRATION

SCALE

0 0.25 0.5
 MILES

10,000 FOOT GRID BASED ON NORTH CAROLINA PLANE COORDINATE SYSTEM
 LAMBERT CONFORMAL CONIC PROJECTION