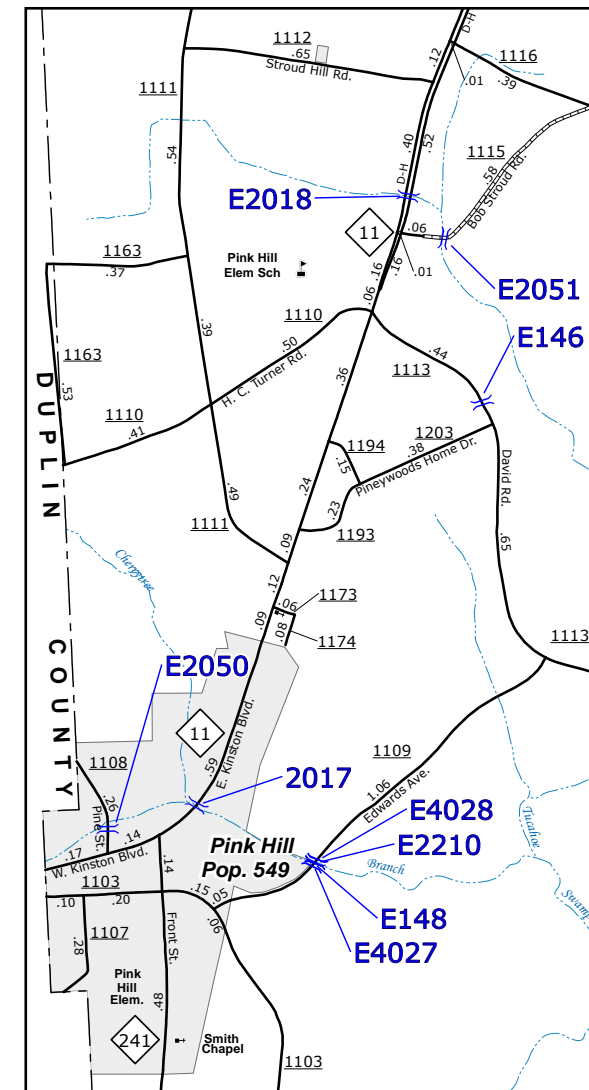
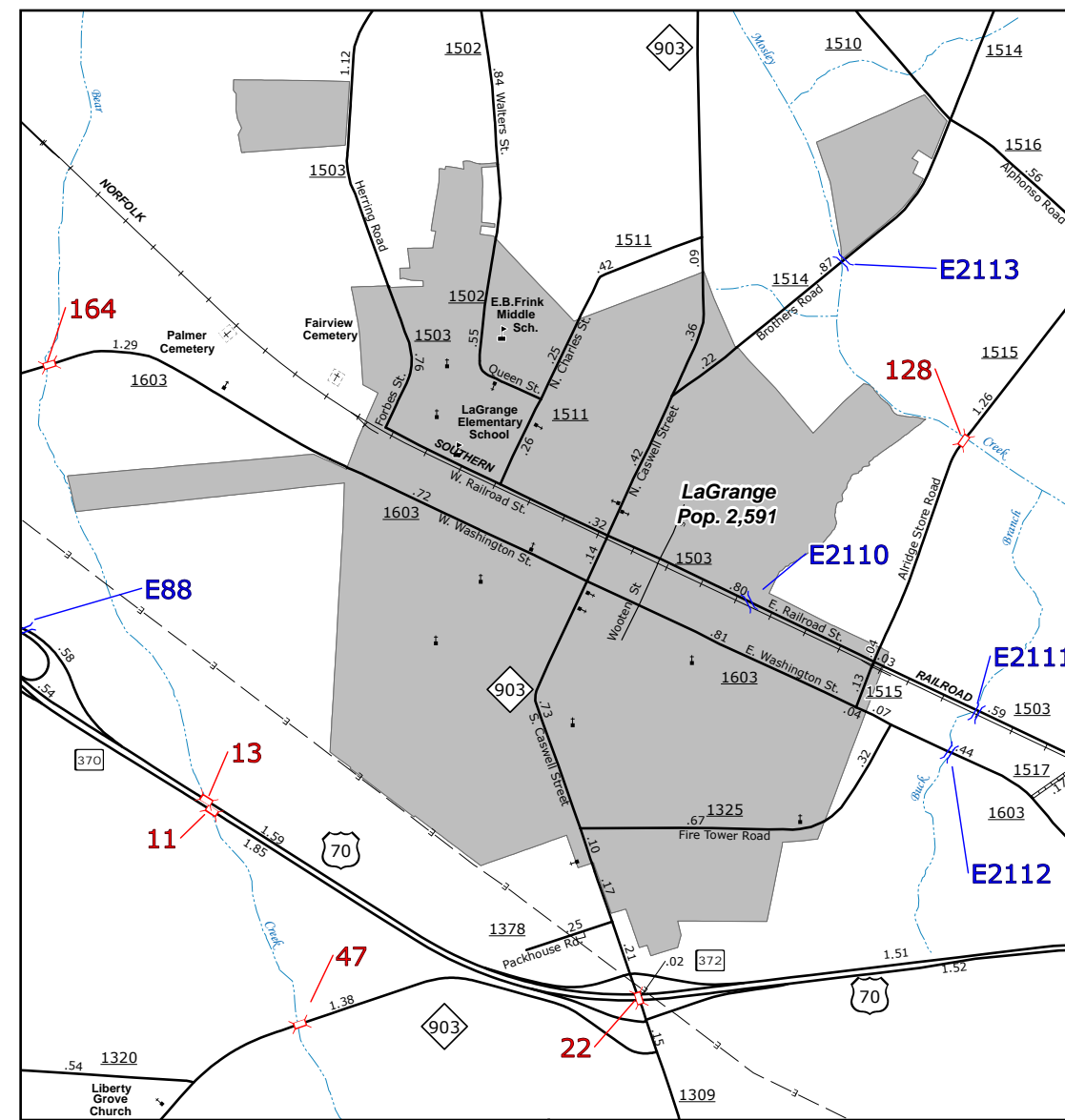


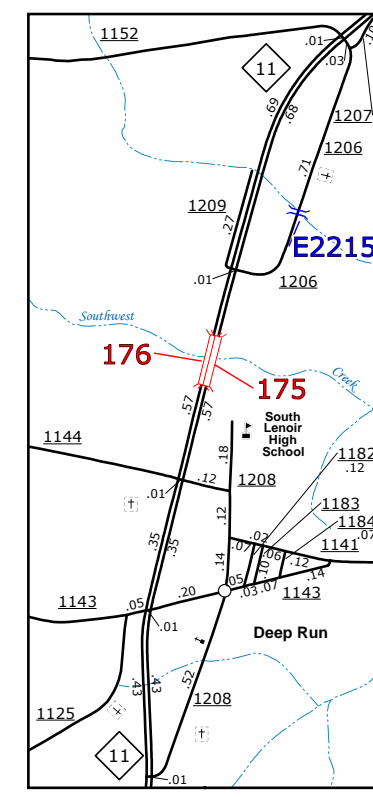
Taylors Crossroads



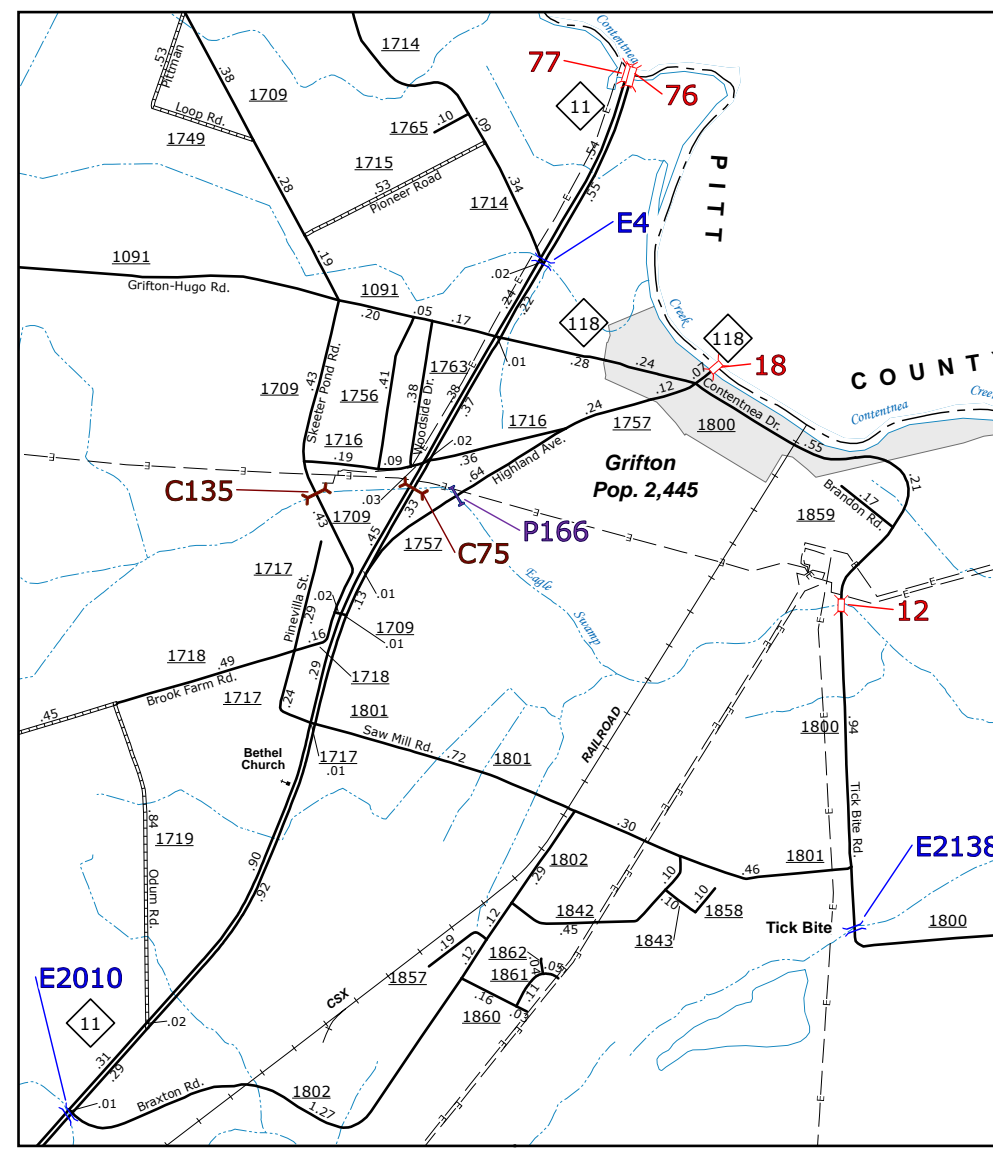
Pink Hill



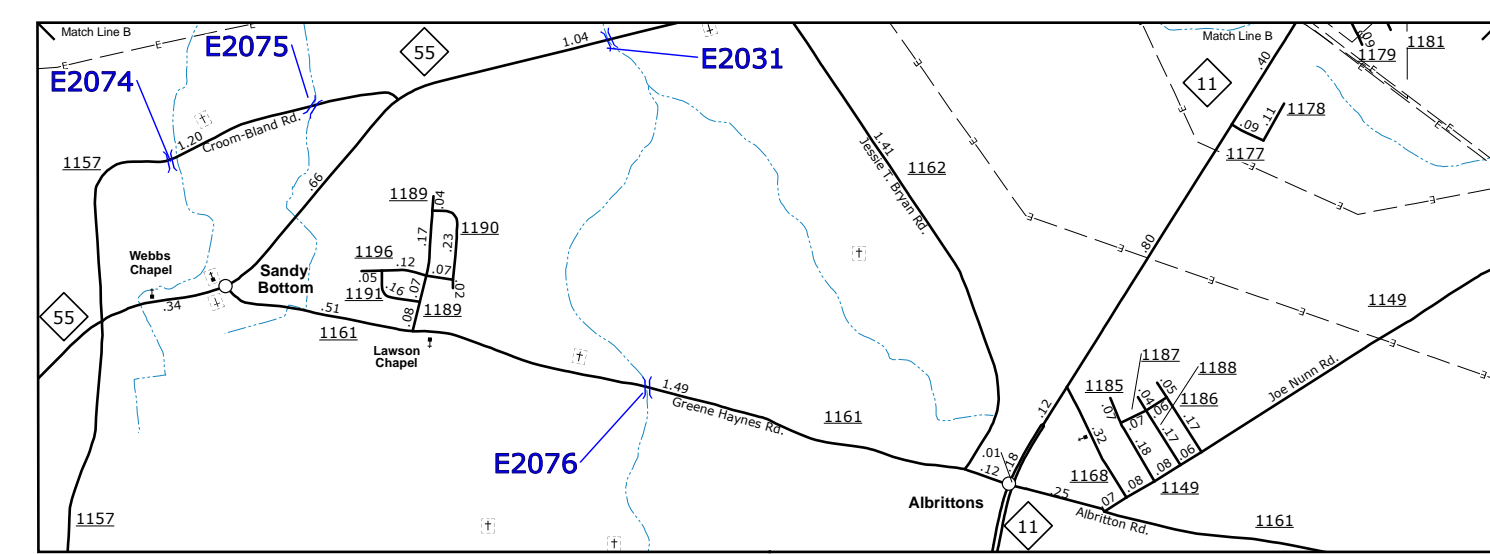
LaGrange



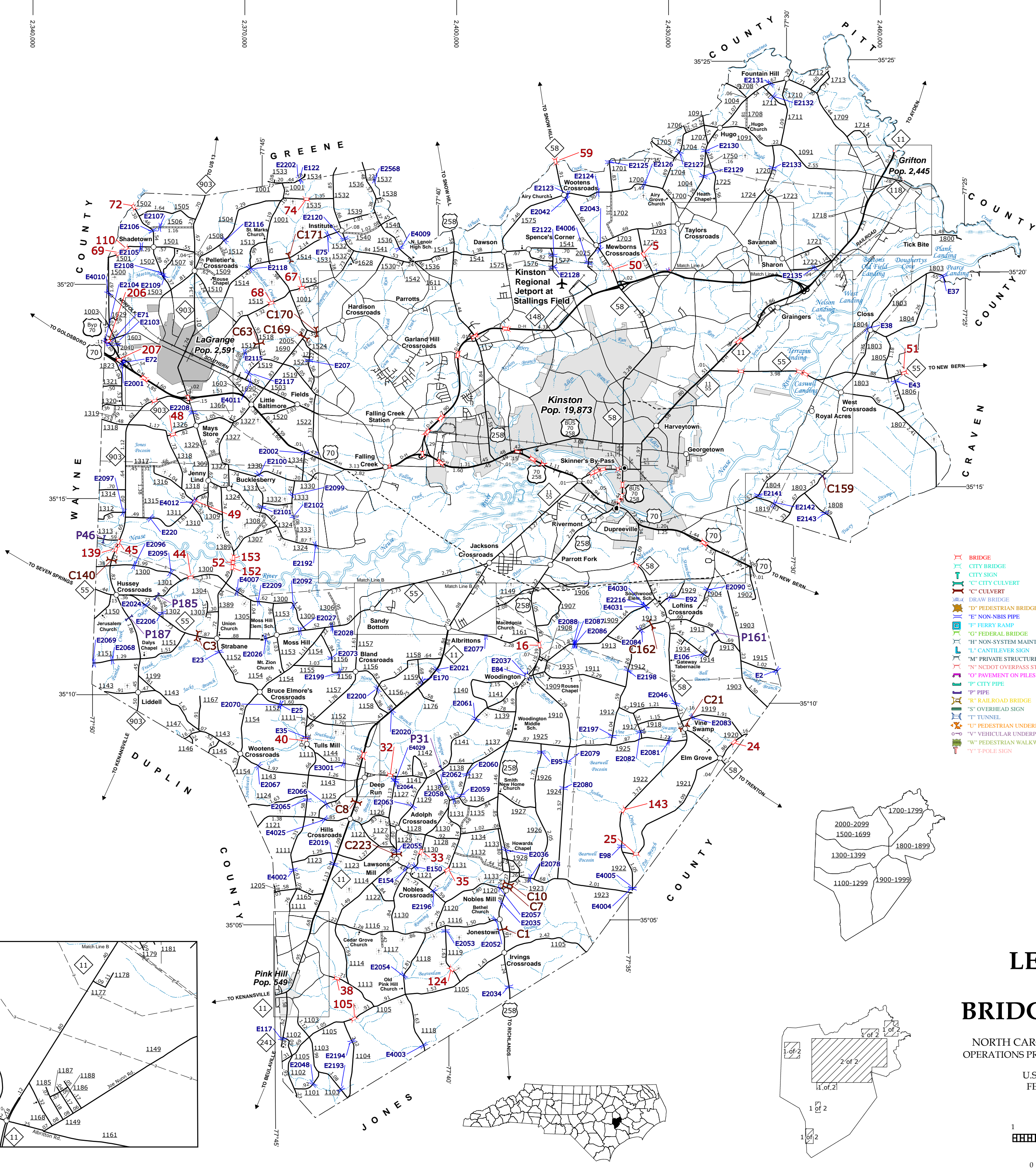
Deep Run



Grifton

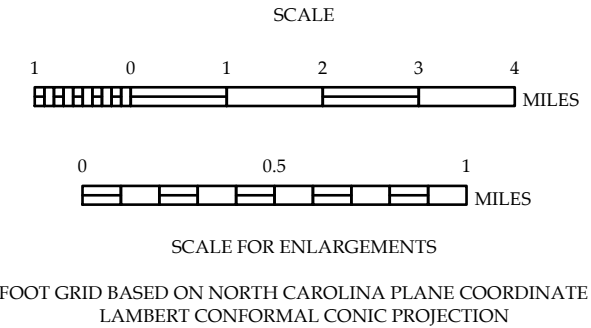


Sandy Bottom



- LEGEND**
- UNPAVED SURFACED ROAD
 - HARD SURFACED ROAD
 - NON-SYSTEM ROADS
 - DIVYED HIGHWAY FRONTAGE ROADS
 - PROJECTED LOCATION
 - BLUE RIDGE PARKWAY
 - INTERSECTION DISTANCE
 - TRAFFIC CIRCLE
 - DETAILED HIGHWAY INTERCHANGE
 - FORD
 - INTERSTATE HIGHWAY
 - U.S. NUMBERED HIGHWAY
 - N.C. NUMBERED HIGHWAY
 - U.S. NUMBERED BI-CYCLE ROUTE
 - N.C. NUMBERED BI-CYCLE ROUTE
 - INTERSTATE INTERCHANGE NUMBER
 - SECONDARY ROAD NUMBER
 - UTILITY LINES
 - RAILROAD
 - RAILROAD STATION
 - GRADE CROSSING
 - INSET AREA
 - URBAN EXTENSION LINE
 - NATIONAL FOREST BOUNDARY
 - RESERVATION OR PARK BOUNDARY
 - STATE FOREST BOUNDARY
 - STATE GAMELAND BOUNDARY
 - FEDERAL GAMELAND BOUNDARY
 - MILITARY RESERVATION BOUNDARY
 - STATE LINE
 - COUNTY LINE
 - CITY LIMIT
 - FERRY ROUTE
 - NARROW CREEK OR STREAM
 - WIDE RIVER OR CREEK
 - RESERVOIR, POND OR LAKE W/ ISLAND
 - DAM OR DAM WITH LOCK
 - WATERFALL
 - SWAMP
 - COMMUNITY, TOWN OR CITY CENTER
 - COUNTY SEAT
 - STATE CAPITAL
 - SCHOOL
 - COLLEGE OR UNIVERSITY
 - HOSPITAL
 - COAST GUARD STATION
 - CHURCH
 - CHURCH WITH CEMETERY
 - CEMETERY
 - PATROL STATION
 - CORRECTION OR PENAL INSTITUTION
 - QUARRY
 - MINE OR PIT
 - HIGHWAY GARAGE OR MAINT. YARD
 - HIGHWAY DIV. OR DIST. OFFICE
 - POST OFFICE
 - MILITARY POST
 - WILDLIFE REFUGES
 - WEIGH STATION
 - FAIRGROUNDS
 - HISTORICAL SITE
 - POINTS OF INTEREST
 - STATE FOREST
 - LIGHTHOUSE
 - MOUNTAIN SUMMIT
 - OVERLOOK
 - GEODETIC MARKER
 - REST AREA
 - VISITOR CTR. REST AREA
 - WELCOME CTR. REST AREA
 - AIRPORT
 - MILITARY AIRPORT
 - HELIPORT


LENOIR COUNTY
 NORTH CAROLINA
BRIDGE LOCATION MAP
 PREPARED BY THE
 NORTH CAROLINA DEPARTMENT OF TRANSPORTATION
 OPERATIONS PROGRAM MANAGEMENT UNIT - MAPPING SECTION
 IN COOPERATION WITH THE
 U.S. DEPARTMENT OF TRANSPORTATION
 FEDERAL HIGHWAY ADMINISTRATION



The Mapping Section's goal is to provide the most accurate and current information possible. Map data is compiled from various sources including aerial photography, ground surveys, and other reliable sources. As a result, the information on this map may not be 100% accurate. For additional information, visit www.ncdot.gov or call 1-800-368-6800.

COPIES OF THIS MAP ARE AVAILABLE FROM THE NORTH CAROLINA DEPARTMENT OF TRANSPORTATION, 4609 BERRY LANE, RALEIGH, NC 27606.