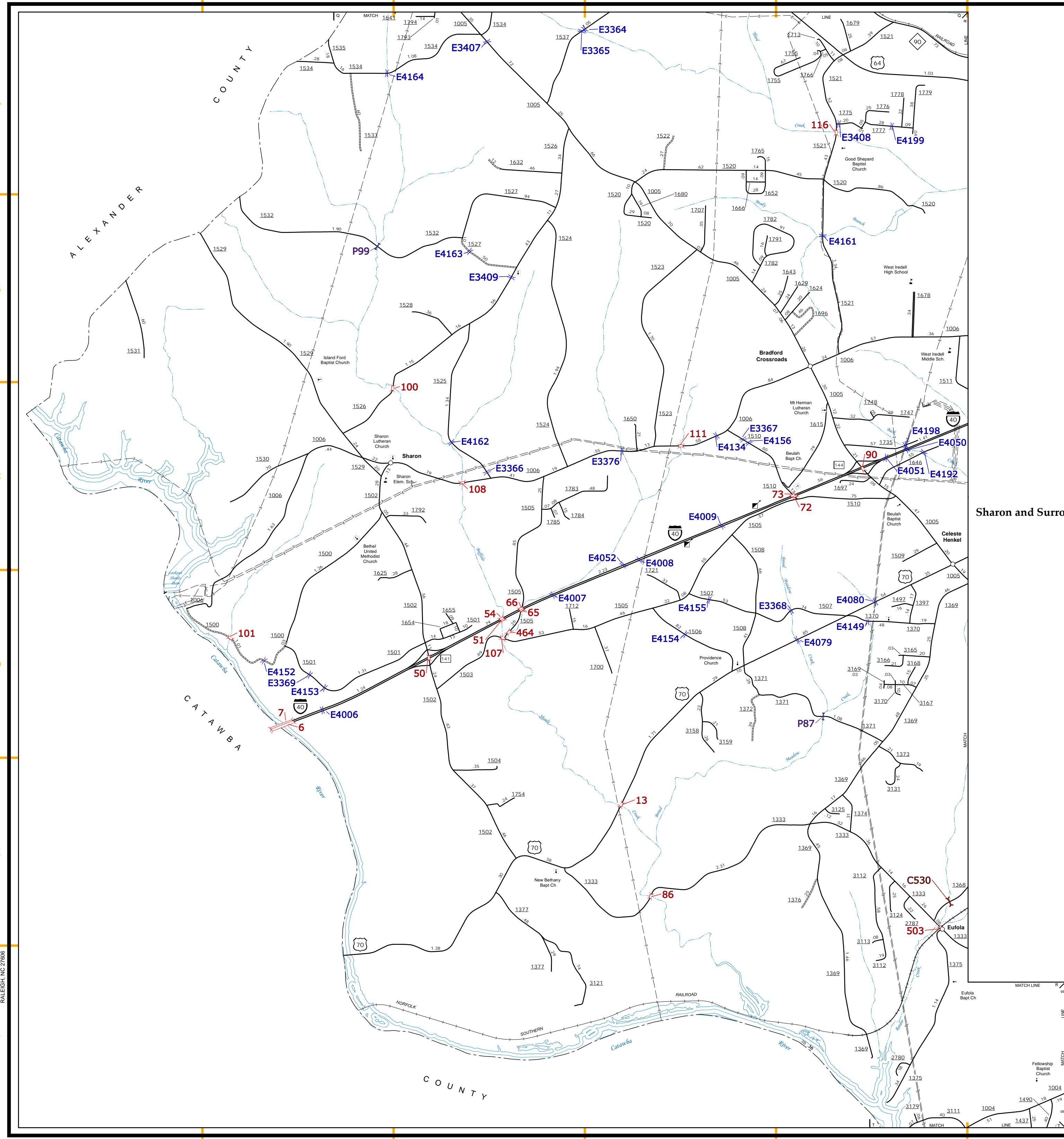
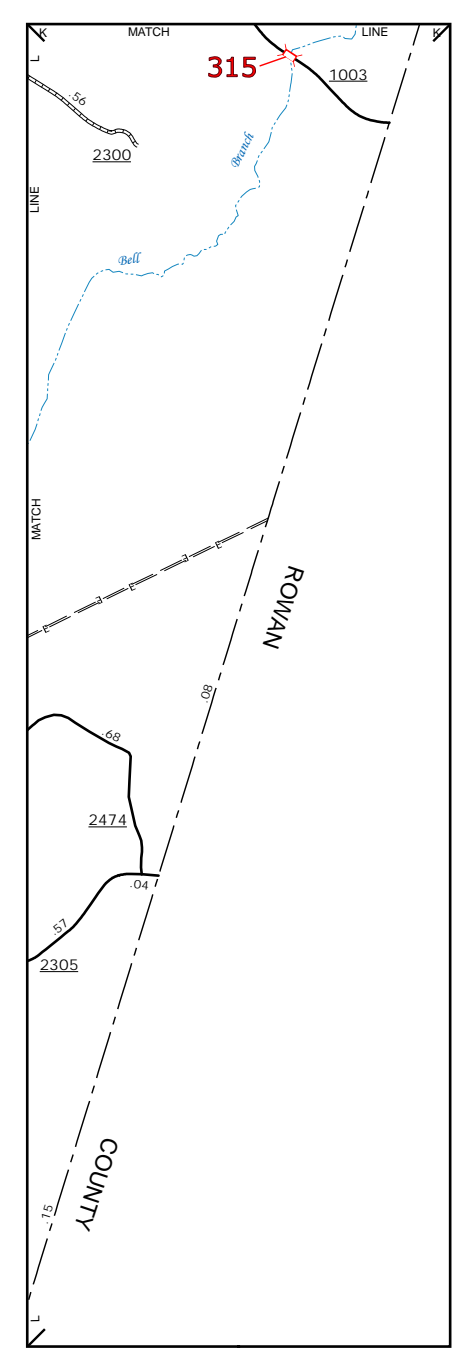


The Mapping Section's goal is to provide the most accurate and current information possible. Map data is compiled from various sources including aerial photography, ground surveys, and other available information. As a result, there may be some discrepancies between the map and actual conditions. The information shown on this map was last updated in July 2022. For additional information, visit <http://www.ncdot.gov/transportation/infrastructure/transportation-planning> and click on Data Feedback or contact us by phone at (919) 833-4480.

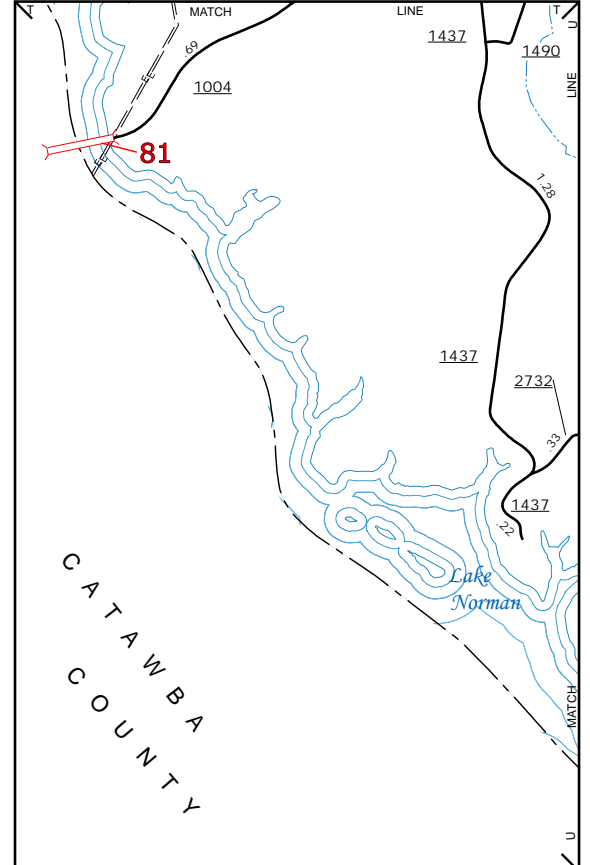
COPIES OF THIS MAP ARE AVAILABLE TO THE PUBLIC AT NOMINAL COST. ADDRESS: N.C. DEPARTMENT OF TRANSPORTATION, MSAU - MAPPING SECTION, 4801 BERTHLETT RD., RALEIGH, NC 27635



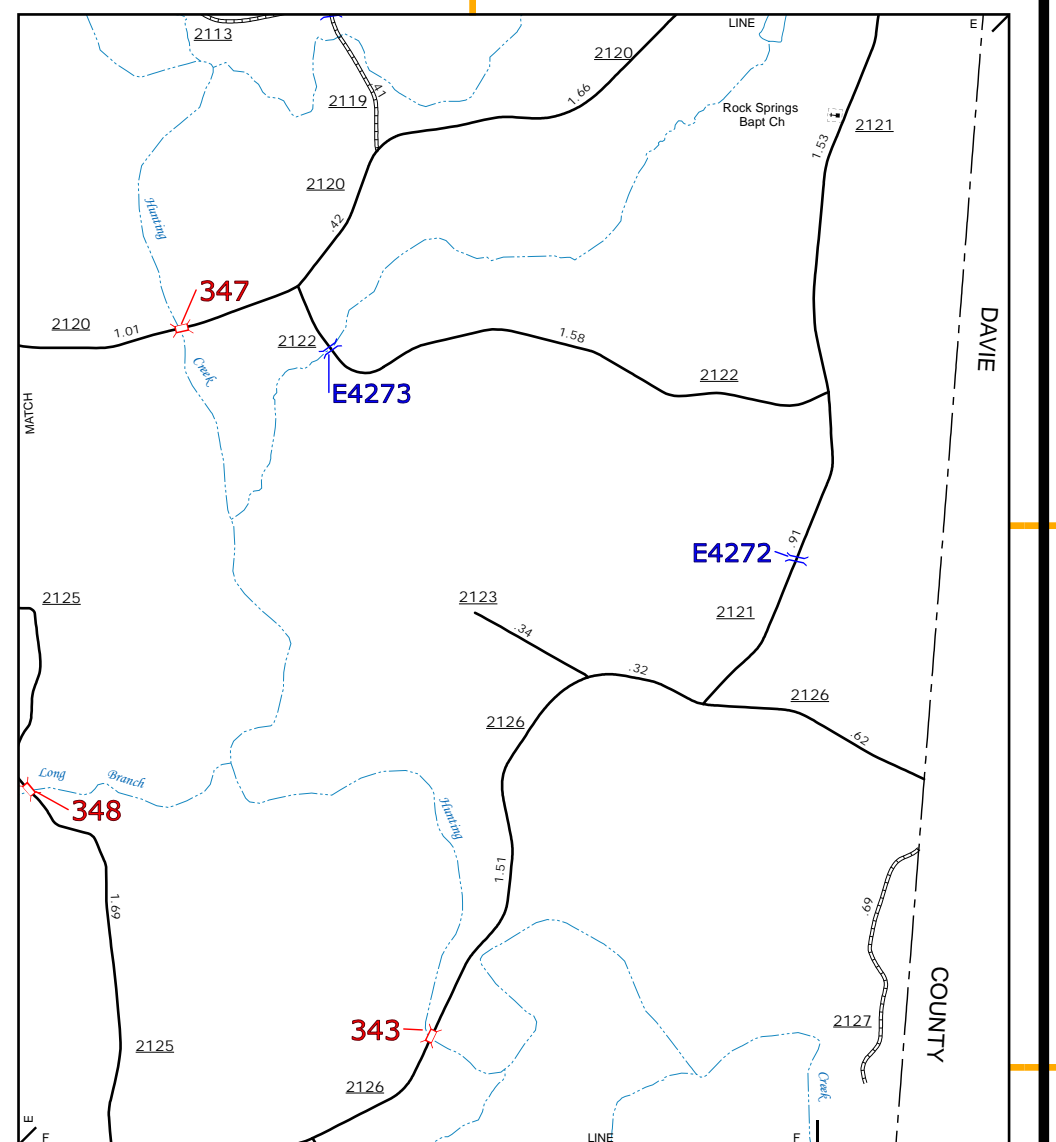
Sharon and Surrounding Area



Inset 2



Inset 3



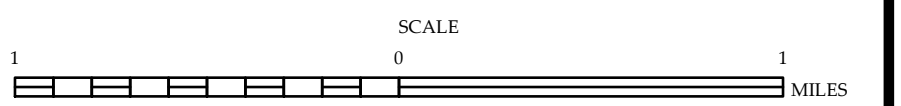
Rock Springs Bapt. Ch. Area

- BRIDGE
- CITY BRIDGE
- CITY SIGN
- CITY CULVERT
- CULVERT
- IRON BRIDGE
- PEDESTRIAN BRIDGE
- NON-NBIS PIPE
- FERRY RAJIP
- FEDERAL BRIDGE
- NON-SYSTEM MAINT BY NCDOT
- CANTILEVER SIGN
- PRIVATE STRUCTURE
- NCDOT OVERPASS STRUCTURE
- PAVEMENT ON PILES
- CITY PIPE
- PIPE
- RAILROAD BRIDGE
- OVERHEAD SIGN
- TUNNEL
- PEDESTRIAN UNDERPASS
- VEHICULAR UNDERPASS
- PEDESTRIAN WALKWAY
- TRIPLE SIGN



ENLARGED MUNICIPAL AND SUBURBAN AREAS
IREDELL COUNTY
 NORTH CAROLINA
BRIDGE LOCATION MAP

PREPARED BY THE
 NORTH CAROLINA DEPARTMENT OF TRANSPORTATION
 OPERATIONS PROGRAM MANAGEMENT UNIT - MAPPING SECTION
 IN COOPERATION WITH THE
 U.S. DEPARTMENT OF TRANSPORTATION
 FEDERAL HIGHWAY ADMINISTRATION



10,000 FOOT GRID BASED ON NORTH CAROLINA PLANE COORDINATE SYSTEM
 LAMBERT CONFORMAL CONIC PROJECTION