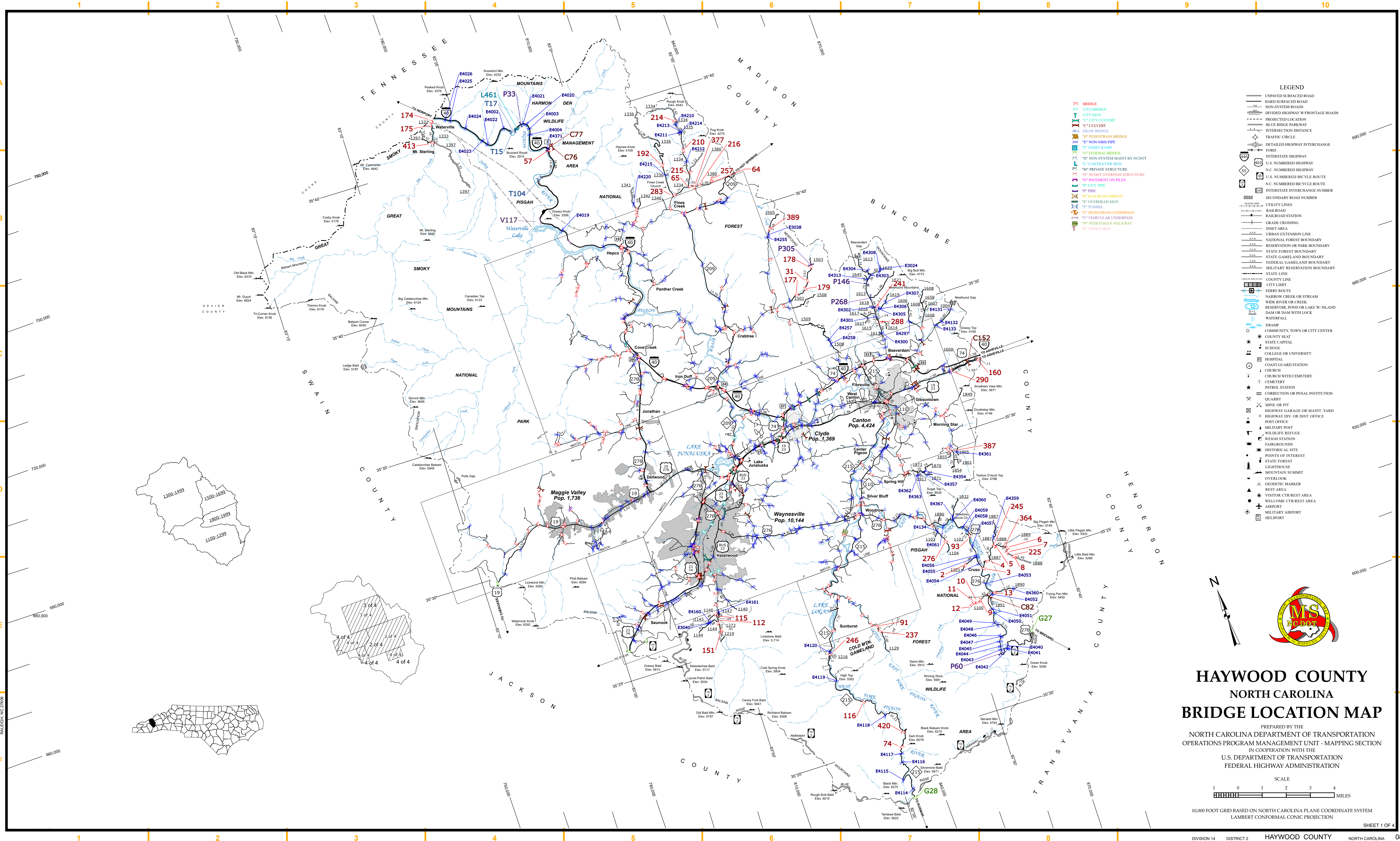


COPIES OF THIS MAP ARE AVAILABLE FROM THE NORTH CAROLINA DEPARTMENT OF TRANSPORTATION
ADDRESS: 4609 BERRY LANE, RALEIGH, NC 27606
MSAU - MAPPING SECTION
CONTACT: (919) 855-8480

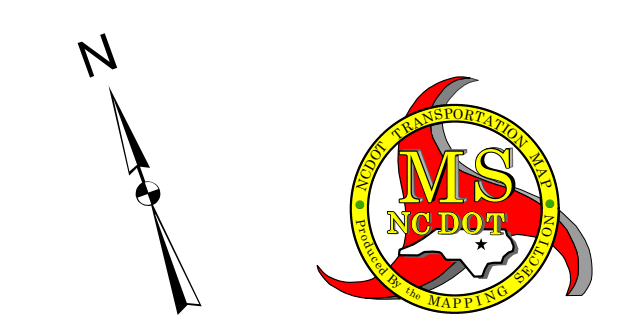
The Mapping Section's goal is to provide the most accurate and current information possible. Map data is compiled from various sources including aerial photography, ground surveys, and other data. The accuracy of the information is not guaranteed. The information is provided "AS IS" without warranty of any kind. The user assumes all responsibility for the use of the information. For additional information, visit <http://www.ncdot.gov> and click on Data Providers or contact us by phone at (919) 855-8480.



LEGEND

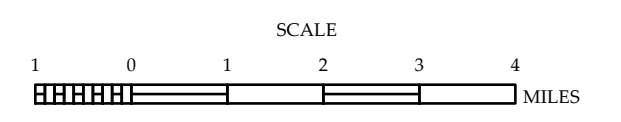
- BRIDGE
- CITY BRIDGE
- CITY SIGN
- CITY CULVERT
- PROJECTED LOCATION
- CULVERT
- DRAW BRIDGE
- PEDESTRIAN BRIDGE
- NON-MSU PIPE
- FERRY RAMP
- PRIVATE STRUCTURE
- NC DOT OVERPASS STRUCTURE
- PIPEMENT ON PILES
- CITY PIPE
- RAILROAD BRIDGE
- TUNNEL
- PEDESTRIAN UNDERPASS
- VEHICULAR UNDERPASS
- PEDESTRIAN WALKWAY
- POLE SIGN

- UNPAVED SURFACED ROAD
- HARD SURFACED ROAD
- NON-SYSTEM ROADS
- DIVIDED HIGHWAY FRONTAGE ROADS
- PROTECTED LOCATION
- BLUE RIDGE PARKWAY
- INTERSECTION DISTANCE
- TRAFFIC CIRCLE
- DETAILED HIGHWAY INTERCHANGE
- FORD
- INTERSTATE HIGHWAY
- U.S. NUMBERED HIGHWAY
- N.C. NUMBERED HIGHWAY
- U.S. NUMBERED BI-CYCLE ROUTE
- N.C. NUMBERED BI-CYCLE ROUTE
- INTERSTATE INTERCHANGE NUMBER
- SECONDARY ROAD NUMBER
- UTILITY LINES
- RAILROAD
- RAILROAD STATION
- GRADE CROSSING
- INSET AREA
- URBAN EXTENSION LINE
- NATIONAL FOREST BOUNDARY
- RESERVATION OR PARK BOUNDARY
- STATE FOREST BOUNDARY
- STATE GAMEDLAND BOUNDARY
- FEDERAL GAMEDLAND BOUNDARY
- MILITARY RESERVATION BOUNDARY
- STATE LINE
- COUNTY LINE
- CITY LIMIT
- FERRY ROUTE
- NARROW CREEK OR STREAM
- WIDE RIVER OR CREEK
- RESERVOIR, POND OR LAKE W/ ISLAND
- DAM OR DAM WITH LOCK
- WATERFALL
- SWAMP
- COMMUNITY, TOWN OR CITY CENTER
- COUNTY SEAT
- STATE CAPITAL
- SCHOOL
- COLLEGE OR UNIVERSITY
- HOSPITAL
- COAST GUARD STATION
- CHURCH
- CHURCH WITH CEMETERY
- CEMETERY
- PATROL STATION
- CORRECTION OR PENAL INSTITUTION
- QUARRY
- MINE OR PIT
- HIGHWAY GARAGE OR MAINT. YARD
- HIGHWAY DIV. OR DIST. OFFICE
- POST OFFICE
- MILITARY POST
- WILDLIFE REFUGE
- WEIGH STATION
- FAIRGROUNDS
- HISTORICAL SITE
- POINTS OF INTEREST
- STATE FOREST
- LIGHTHOUSE
- MONUMENTAL SUMMIT
- OVERLOOK
- GEODETIC MARKER
- REST AREA
- VISITOR CENTER REST AREA
- WELCOME CENTER REST AREA
- AIRPORT
- MILITARY AIRPORT
- HELIPORT



HAYWOOD COUNTY NORTH CAROLINA BRIDGE LOCATION MAP

PREPARED BY THE
NORTH CAROLINA DEPARTMENT OF TRANSPORTATION
OPERATIONS PROGRAM MANAGEMENT UNIT - MAPPING SECTION
IN COOPERATION WITH THE
U.S. DEPARTMENT OF TRANSPORTATION
FEDERAL HIGHWAY ADMINISTRATION



10,000 FOOT GRID BASED ON NORTH CAROLINA PLANE COORDINATE SYSTEM
LAMBERT CONFORMAL CONIC PROJECTION