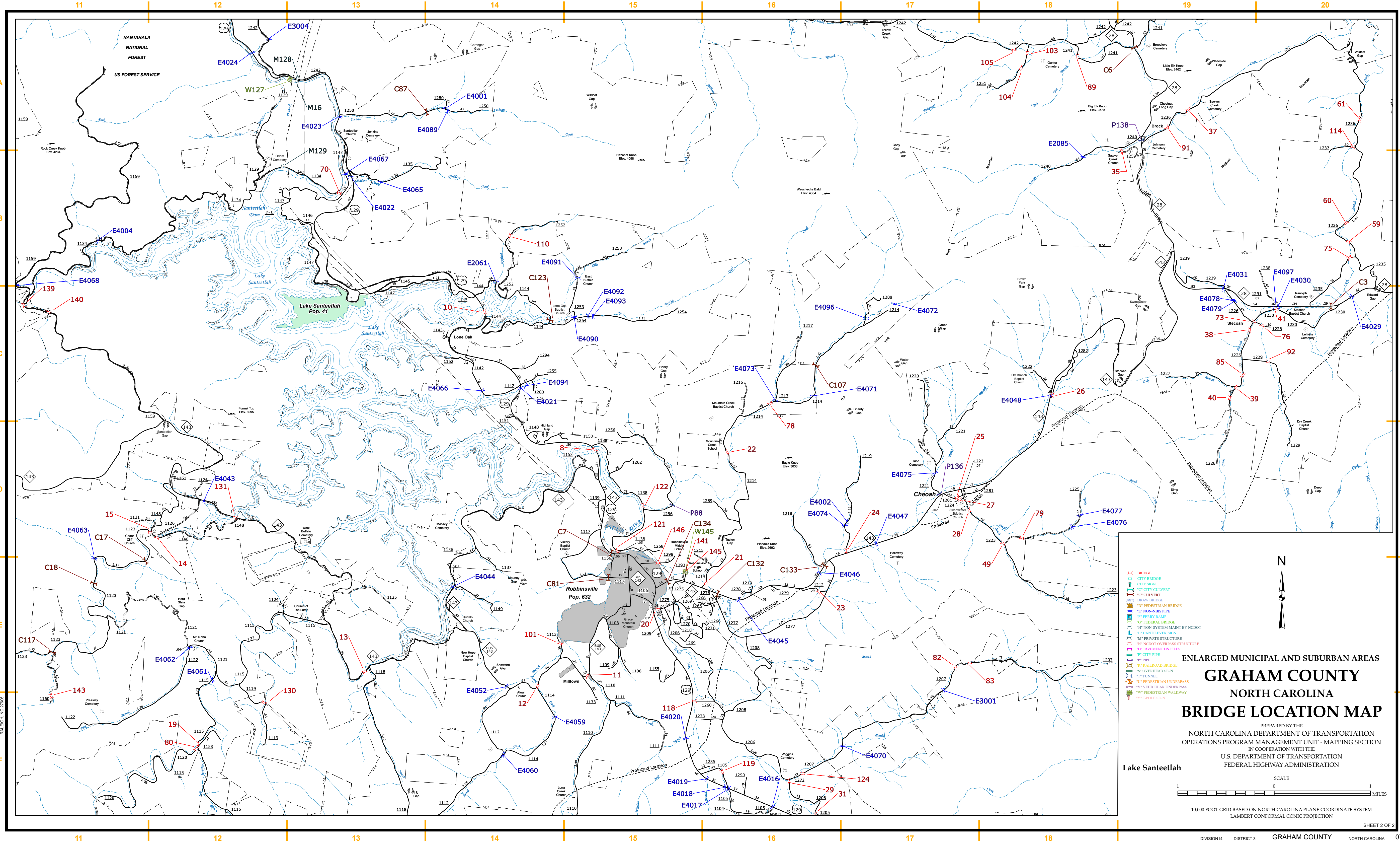


COPIES OF THIS MAP ARE AVAILABLE TO THE PUBLIC AT A NOMINAL COST. ADDRESS: N.C. DEPARTMENT OF TRANSPORTATION, 4800 BERRY LANE, RALEIGH, NC 27606. THE MAPING SECTION'S GOALS IS TO PROVIDE THE MOST ACCURATE AND CURRENT INFORMATION POSSIBLE. MAP DATA IS COMPILED FROM AERIAL PHOTOGRAPHY, GROUND SURVEYS, AND OTHER SOURCES. THE MAPING SECTION IS NOT RESPONSIBLE FOR THE ACCURACY OF THE DATA PROVIDED BY OTHER AGENCIES. FOR ADDITIONAL INFORMATION, VISIT THE WEBSITE: <http://www.ncdot.gov/transportation/mapping> AND CALL OR CONTACT US BY PHONE AT (919) 855-8480.



ENLARGED MUNICIPAL AND SUBURBAN AREAS
GRAHAM COUNTY
NORTH CAROLINA
BRIDGE LOCATION MAP

PREPARED BY THE
NORTH CAROLINA DEPARTMENT OF TRANSPORTATION
OPERATIONS PROGRAM MANAGEMENT UNIT - MAPPING SECTION
IN COOPERATION WITH THE
U.S. DEPARTMENT OF TRANSPORTATION
FEDERAL HIGHWAY ADMINISTRATION

Lake Santeetlah

SCALE
0 1 MILES

10,000 FOOT GRID BASED ON NORTH CAROLINA PLANE COORDINATE SYSTEM
LAMBERT CONFORMAL CONIC PROJECTION

SHEET 2 OF 2

- BRIDGE
- CITY BRIDGE
- CITY SIGN
- CITY CULVERT
- CULVERT
- DRAW BRIDGE
- PEDESTRIAN BRIDGE
- NON-RRS PIPE
- FERRY RAMP
- FEDERAL BRIDGE
- NON-SYSTEM MAINT BY NCDOT
- CANAL ELEV SIGN
- PRIVATE STRUCTURE
- NCDOT OVERPASS STRUCTURE
- FRONTAGE ON PILES
- PIPE
- RAIL ROAD BRIDGE
- OVERHEAD SIGN
- TUNNEL
- PEDESTRIAN UNDERPASS
- VEHICULAR UNDERPASS
- PEDESTRIAN WALKWAY
- ELEV SIGN