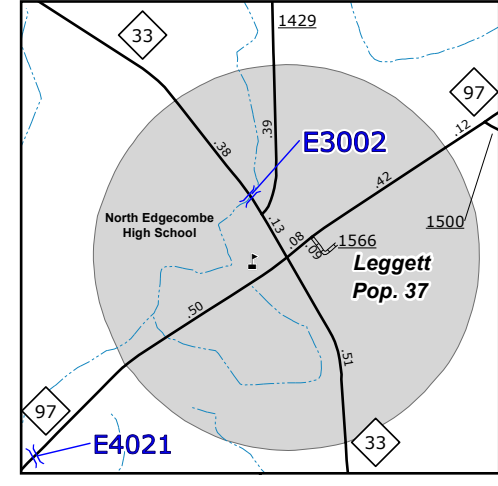
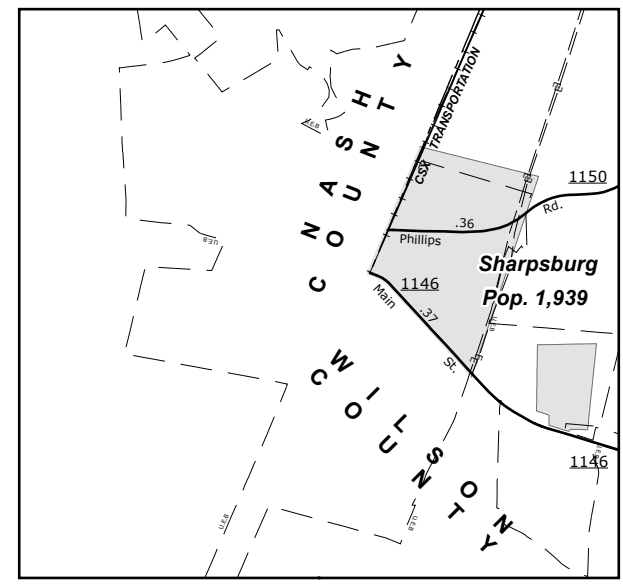


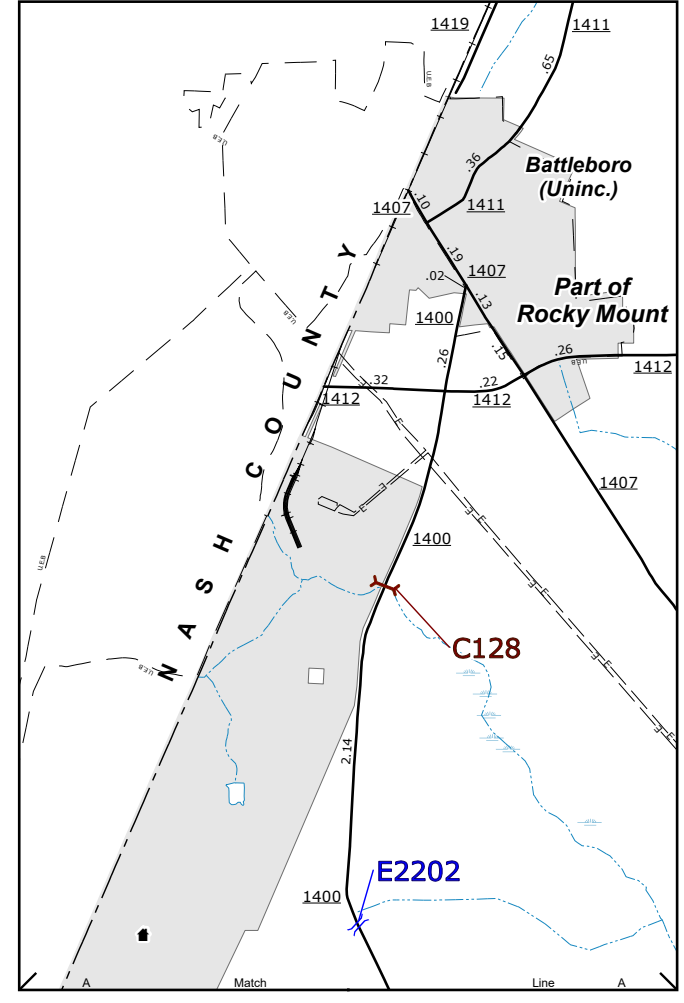
Whitakers
Pop. 691



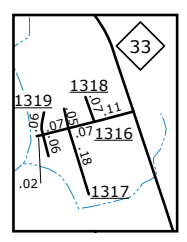
Leggett
Pop. 37



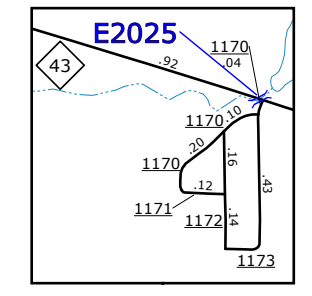
Sharpsburg
Pop. 1,939



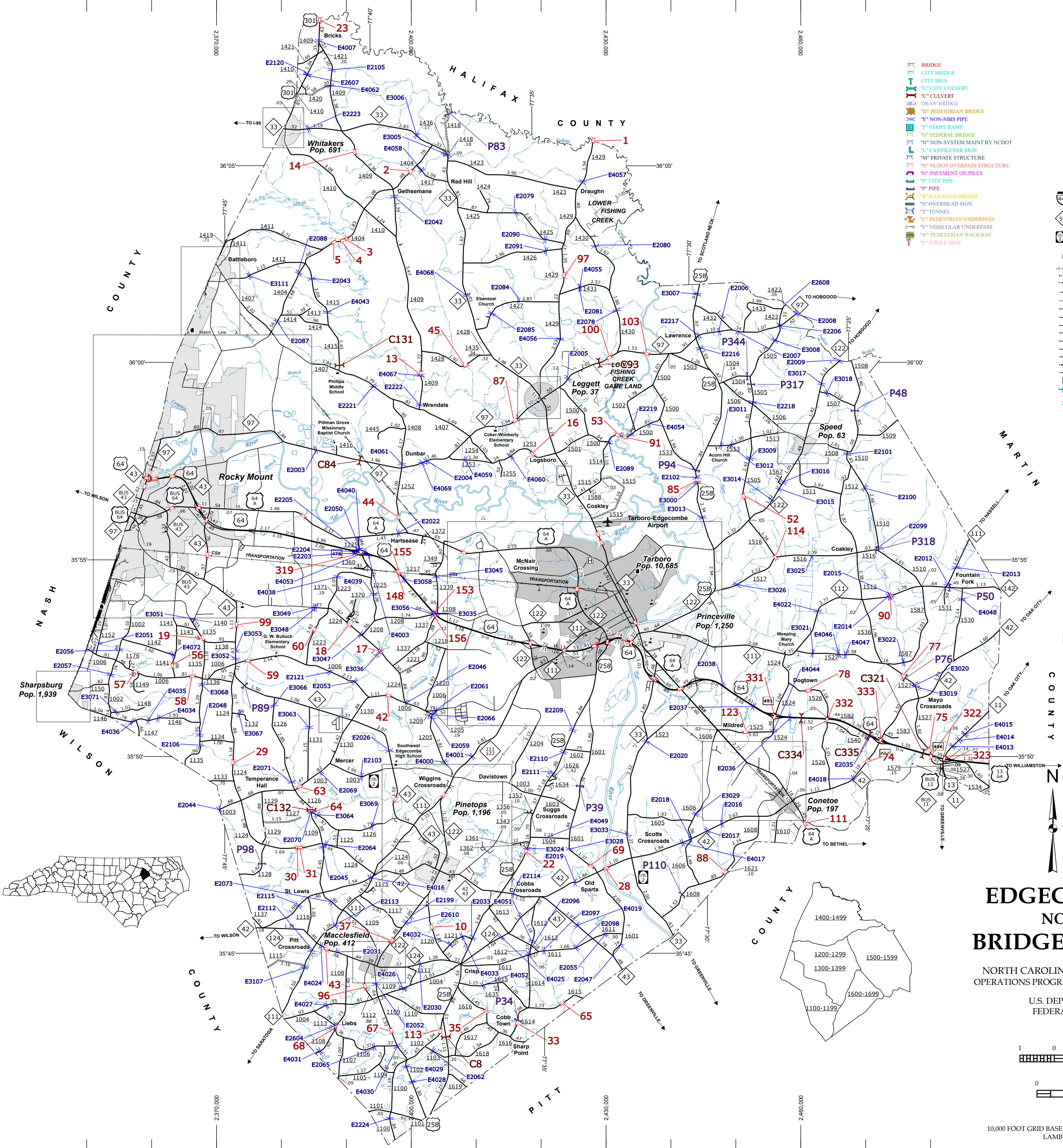
Battleboro (part of Rocky Mount)
Pop. 1,196



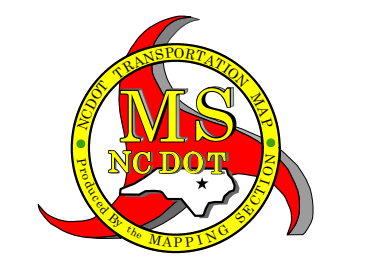
Inset 1



Inset 2

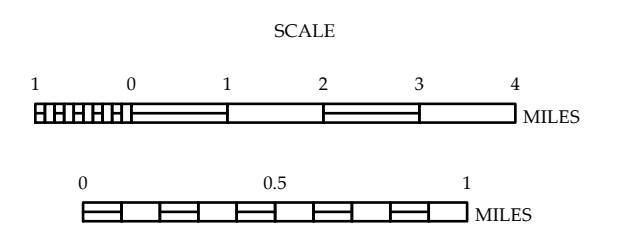


- LEGEND**
- BRIDGE
 - CITY BRIDGE
 - CITY SIGN
 - CITY CULVERT
 - CULVERT
 - DRAIN BRIDGE
 - NON-SYSTEM BRIDGE
 - NON-SYSTEM PIPE
 - FERRY RAMP
 - FEDERAL BRIDGE
 - NON-SYSTEM MAINT BY NCDOT
 - CANTILEVER SIGN
 - PRIVATE STRUCTURE
 - NECKT OVERPASS STRUCTURE
 - PAVEMENT ON PILES
 - CITY PIPE
 - PIPE
 - RAILROAD BRIDGE
 - TUNNEL
 - PEDESTRIAN UNDERPASS
 - VEHICULAR UNDERPASS
 - PEDESTRIAN WALKWAY
 - POLE SIGN
- UNPAVED SURFACED ROAD
 - HARD SURFACED ROAD
 - NON-SYSTEM ROAD
 - DIVIDED HIGHWAY FRONTAGE ROADS
 - PROTECTED LOCATION
 - BLUE RIDGE PARKWAY
 - INTERSECTION DISTANCE
 - TRAFFIC CIRCLE
 - DETAILED HIGHWAY INTERCHANGE
 - FORD
 - INTERSTATE HIGHWAY
 - U.S. NUMBERED HIGHWAY
 - N.C. NUMBERED HIGHWAY
 - U.S. NUMBERED BI-CYCLE ROUTE
 - N.C. NUMBERED BI-CYCLE ROUTE
 - INTERSTATE INTERCHANGE NUMBER
 - SECONDARY ROAD NUMBER
 - UTILITY LINES
 - RAILROAD
 - RAILROAD STATION
 - GRADE CROSSING
 - INSET AREA
 - URBAN EXTENSION LINE
 - NATIONAL FOREST BOUNDARY
 - RESERVATION OR PARK BOUNDARY
 - STATE FOREST BOUNDARY
 - STATE GAMBELAND BOUNDARY
 - FEDERAL GAMBELAND BOUNDARY
 - MILITARY RESERVATION BOUNDARY
 - STATE LINE
 - COUNTY LINE
 - CITY LIMIT
 - FERRY ROUTE
 - NARROW CREEK OR STREAM
 - WIDE RIVER OR CREEK
 - RESERVOIR, POND OR LAKE W/ ISLAND
 - DAM OR DAM WITH LOCK
 - MATERIAL
 - SWAMP
 - COMMUNITY, TOWN OR CITY CENTER
 - COUNTY SEAT
 - STATE CAPITAL
 - SCHOOL
 - COLLEGE OR UNIVERSITY
 - HOSPITAL
 - COAST GUARD STATION
 - CHURCH
 - CHURCH WITH CEMETERY
 - CEMETERY
 - PATROL STATION
 - CORRECTION OR PENAL INSTITUTION
 - QUARRY
 - MINE OR PIT
 - HIGHWAY GARAGE OR MAINT. YARD
 - HIGHWAY DIV. OR DIST. OFFICE
 - POST OFFICE
 - MILITARY POST
 - WILDLIFE REFUGE
 - WEIGH STATION
 - FAIRGROUNDS
 - HISTORICAL SITE
 - POINTS OF INTEREST
 - STATE FOREST
 - LIGHTHOUSE
 - MONUMENTAL SUMMIT
 - OVERLOOK
 - GEODETIC MARKER
 - REST AREA
 - VISITOR CENTER REST AREA
 - WELCOME CENTER REST AREA
 - AIRPORT
 - MILITARY AIRPORT
 - HELIPORT



EDGECOMBE COUNTY NORTH CAROLINA BRIDGE LOCATION MAP

PREPARED BY THE
NORTH CAROLINA DEPARTMENT OF TRANSPORTATION
OPERATIONS PROGRAM MANAGEMENT UNIT - MAPPING SECTION
IN COOPERATION WITH THE
U.S. DEPARTMENT OF TRANSPORTATION
FEDERAL HIGHWAY ADMINISTRATION



SCALE FOR ENLARGEMENTS
10,000 FOOT GRID BASED ON NORTH CAROLINA PLANE COORDINATE SYSTEM
LAMBERT CONFORMAL CONIC PROJECTION

COPIES OF THIS MAP ARE AVAILABLE
 FROM THE PUBLIC INFORMATION COST
 ADDRESS SERVICE CENTER
 ADDRESS: 4809 BERNAL RD.
 RALEIGH, NC 27606
 TEL: 919/855-8480
 FAX: 919/855-8480
 WWW: www.ncdot.gov

THE MAPPING SECTION'S GOALS IS TO PROVIDE THE MOST ACCURATE AND CURRENT INFORMATION POSSIBLE. MAP DATA IS COMPILED
 FROM A VARIETY OF SOURCES INCLUDING AERIAL PHOTOGRAPHS, GROUND SURVEYS, AND OTHER DATA. THE ACCURACY
 OF THE DATA IS NOT GUARANTEED. THE MAPPING SECTION IS NOT RESPONSIBLE FOR ANY ERRORS OR OMISSIONS THAT MAY
 OCCUR IN THIS MAP. FOR ADDITIONAL INFORMATION, VISIT
 WWW.NCDOT.GOV/TRANSPORTATION/MSAU/MAPPING/SECTION