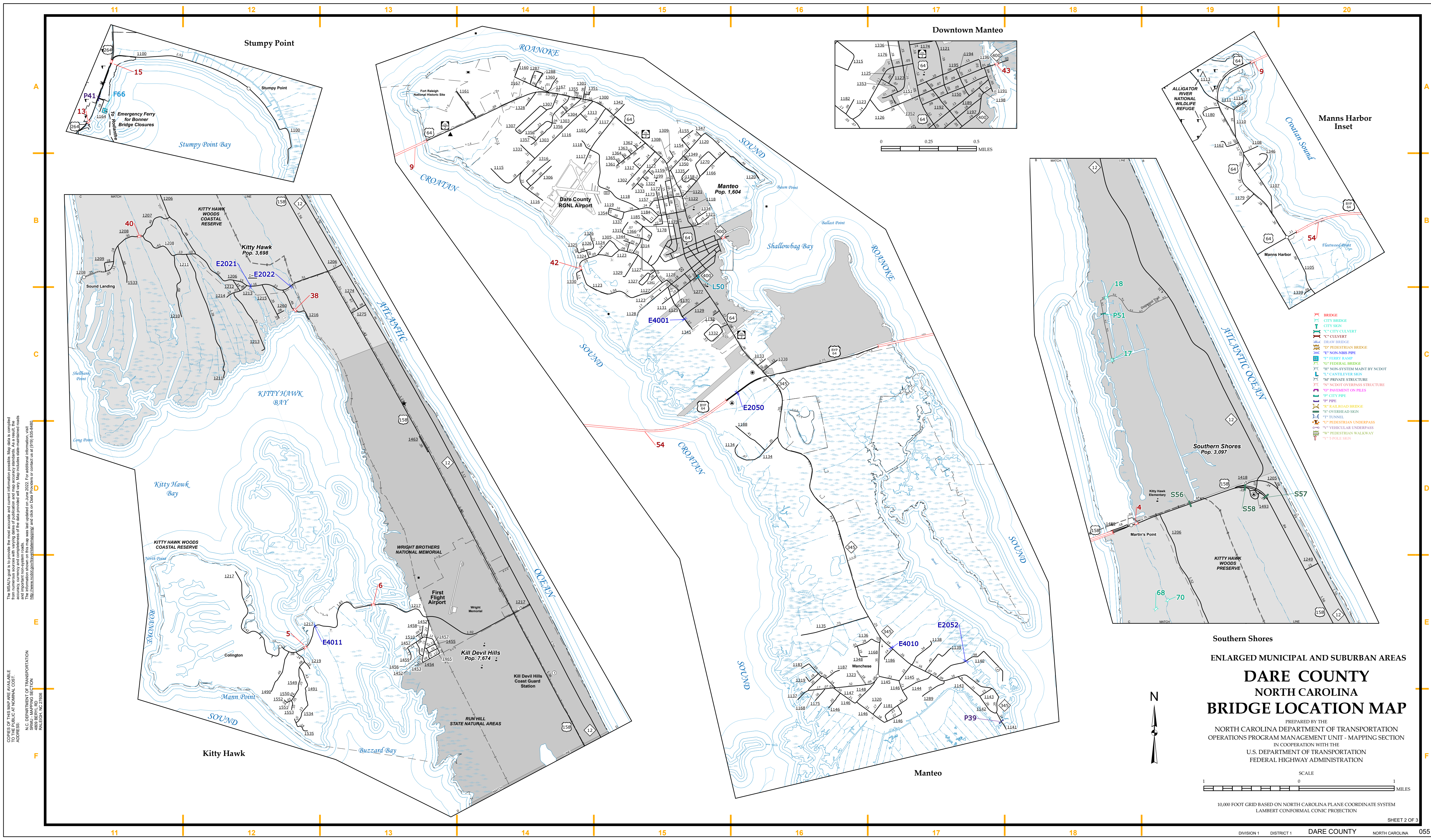


The MS&T's goal is to provide the most accurate and current information possible. Map data is compiled from numerous sources with varying degrees of accuracy and may not reflect the most current information. As a result, roads and other features may not be shown in the correct location or may not be shown at all. The MS&T's goal is to provide the most accurate and current information possible. Map data is compiled from numerous sources with varying degrees of accuracy and may not reflect the most current information. As a result, roads and other features may not be shown in the correct location or may not be shown at all. The MS&T's goal is to provide the most accurate and current information possible. Map data is compiled from numerous sources with varying degrees of accuracy and may not reflect the most current information. As a result, roads and other features may not be shown in the correct location or may not be shown at all.

COPIES OF THIS MAP ARE AVAILABLE  
FROM THE  
N.C. DEPARTMENT OF TRANSPORTATION  
ADDRESS: MAPING SECTION  
4809 BERNARD ROAD  
RALEIGH, NC 27606



Southern Shores

ENLARGED MUNICIPAL AND SUBURBAN AREAS

**DARE COUNTY**

**NORTH CAROLINA**

**BRIDGE LOCATION MAP**

PREPARED BY THE  
NORTH CAROLINA DEPARTMENT OF TRANSPORTATION  
OPERATIONS PROGRAM MANAGEMENT UNIT - MAPPING SECTION  
IN COOPERATION WITH THE  
U.S. DEPARTMENT OF TRANSPORTATION  
FEDERAL HIGHWAY ADMINISTRATION

SCALE  
0 1 MILES

10,000 FOOT GRID BASED ON NORTH CAROLINA PLANE COORDINATE SYSTEM  
LAMBERT CONFORMAL CONIC PROJECTION

SHEET 2 OF 3