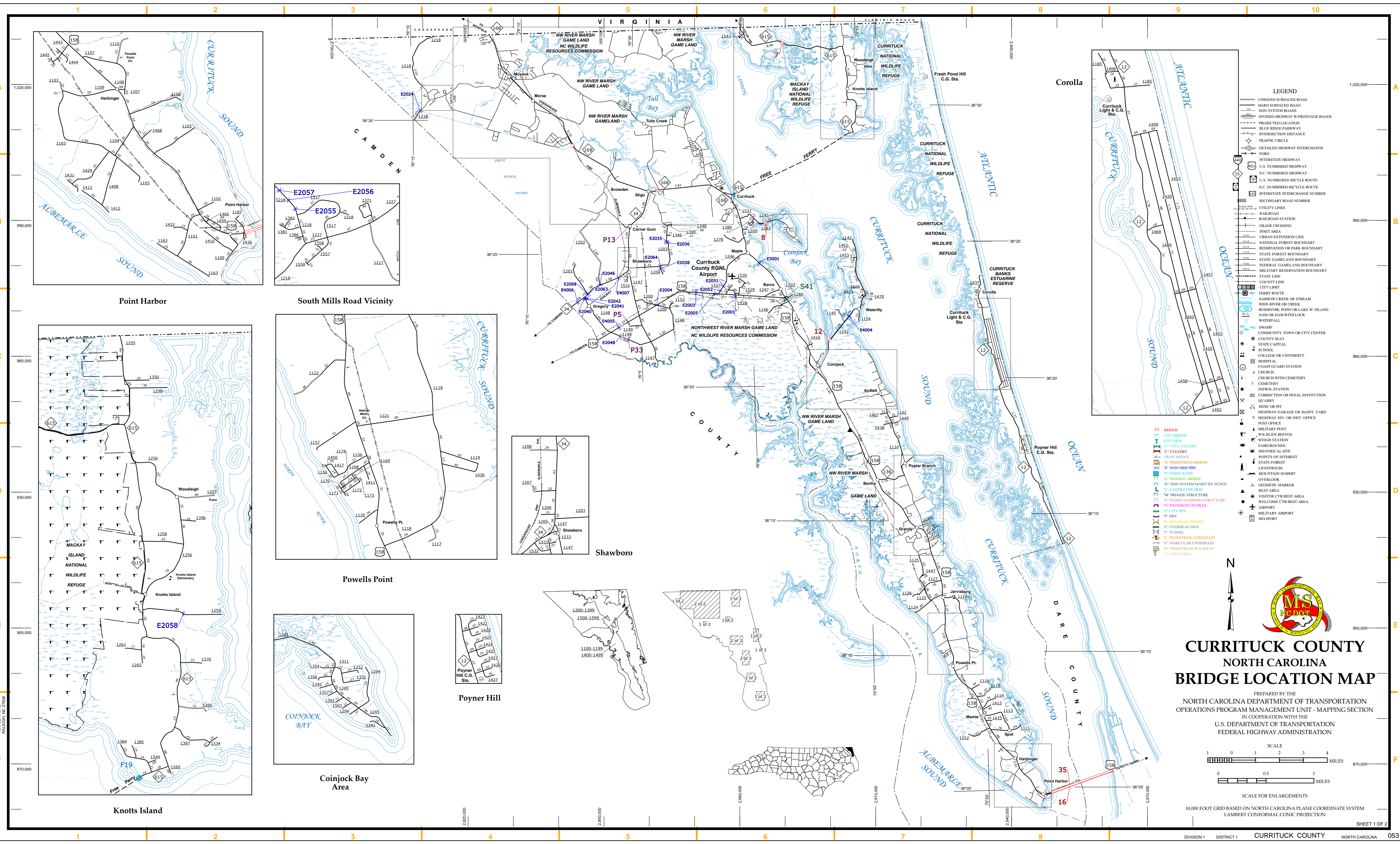


The Mapping Section's goal is to provide the most accurate and current information possible. Map data is compiled from various sources, including aerial photography, ground surveys, and other reliable sources. The accuracy, currency, and completeness of the data provided will vary. This map includes state-maintained roads and important non-system roads.

The information shown on this map was last updated in June 2022. For additional information, visit <https://www.ncdot.gov/transportation/mapping/> and click on Data Users or contact us by phone at (919) 855-6400.

COPIES OF THIS MAP ARE AVAILABLE  
FOR PURCHASE AT A PUBLIC AT NOMINAL COST.  
N.C. DEPARTMENT OF TRANSPORTATION  
SMAU - MAPPING SECTION  
4809 BERT RD.  
RALEIGH, NC 27606



**CURRITUCK COUNTY**  
**NORTH CAROLINA**  
**BRIDGE LOCATION MAP**

PREPARED BY THE  
NORTH CAROLINA DEPARTMENT OF TRANSPORTATION  
OPERATIONS PROGRAM MANAGEMENT UNIT - MAPPING SECTION  
IN COOPERATION WITH THE  
U.S. DEPARTMENT OF TRANSPORTATION  
FEDERAL HIGHWAY ADMINISTRATION

**MS**  
**North**