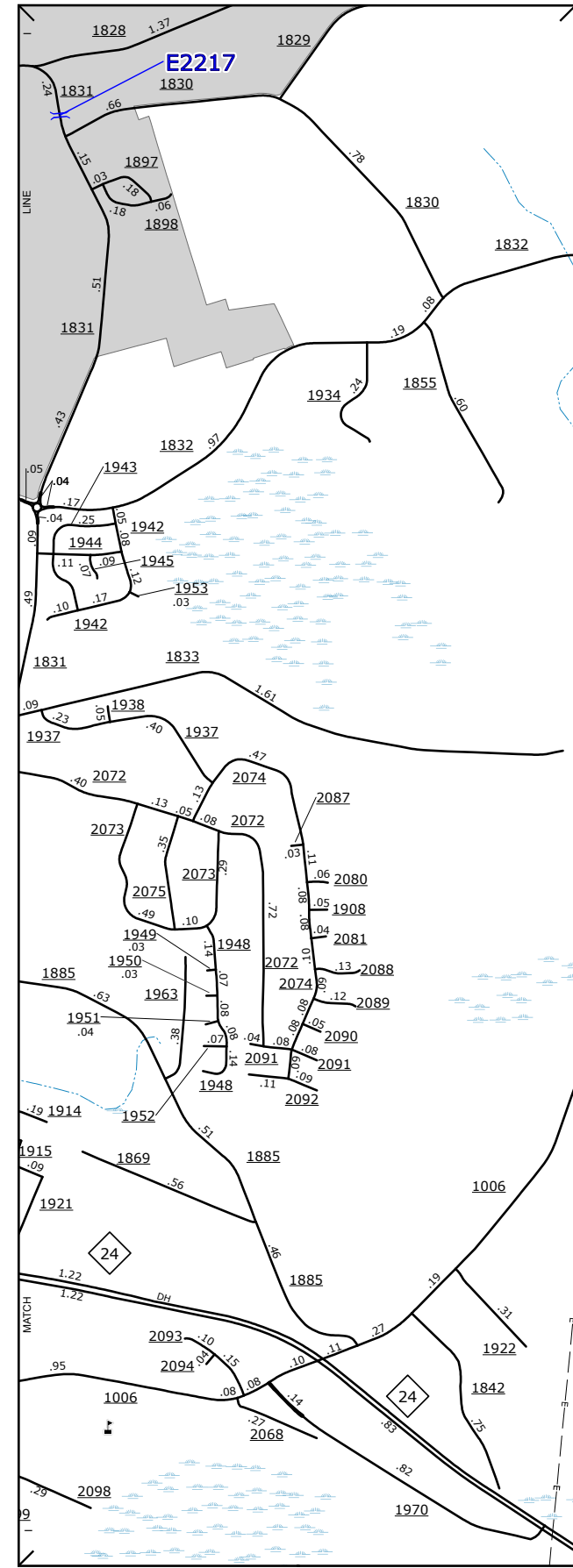
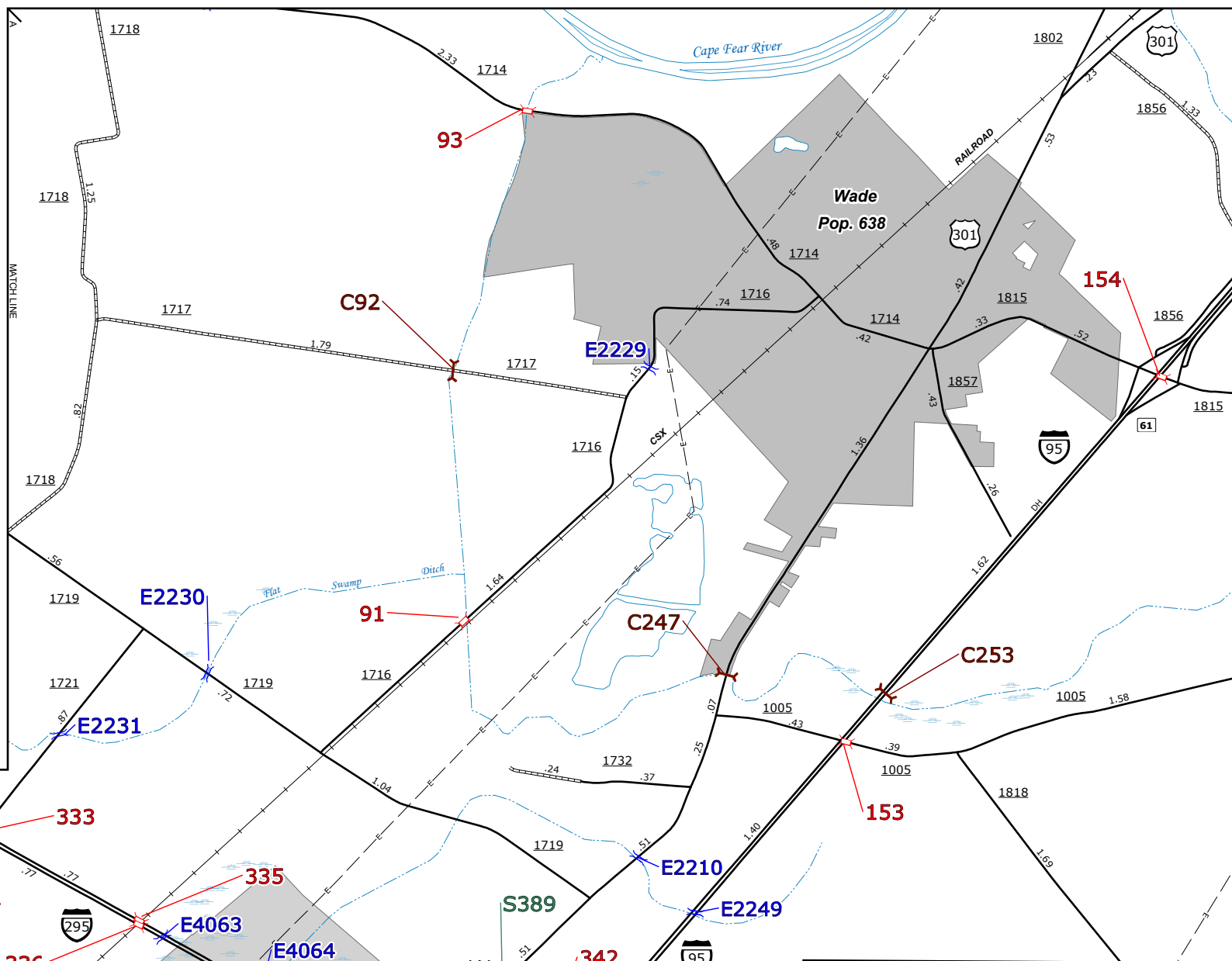


The Mapping Section's goal is to provide the most accurate and current information possible. Map data is compiled from numerous sources with varying dates of publication and map accuracy. As a result, the accuracy of the information shown on this map cannot be guaranteed. For more information, visit <http://www.ncdot.gov/transportation/mapping> and click on Data Providers or contact us by phone at (919) 855-6480.

COPIES OF THIS MAP ARE AVAILABLE  
FOR PURCHASE AT A PUBLIC AT NOMINAL COST.  
ADDRESS: N.C. DEPARTMENT OF TRANSPORTATION  
MSAU-MAPPING SECTION  
4809 BERN LEO DRIVE  
RALEIGH, NC 27606

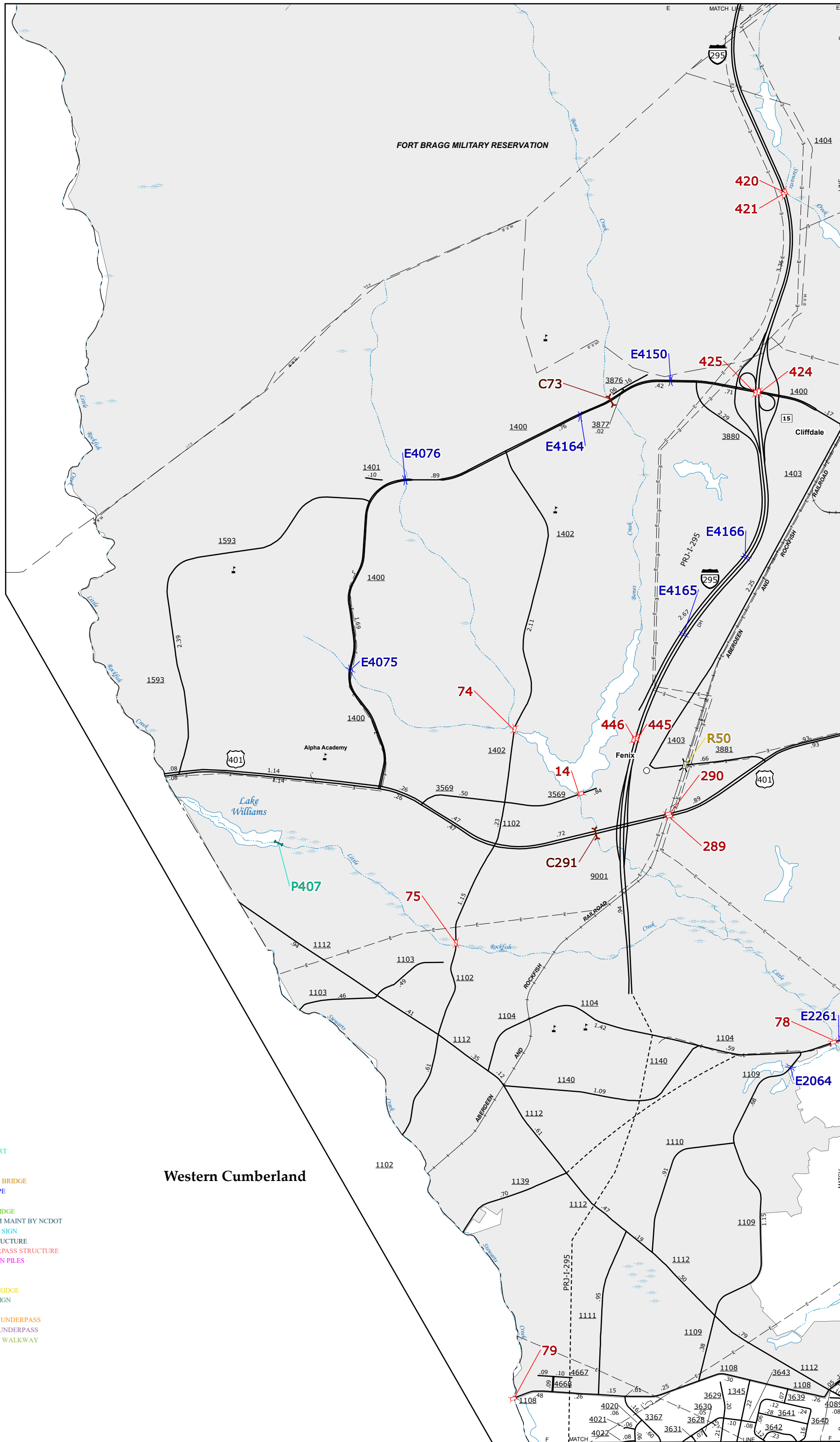


East Fayetteville

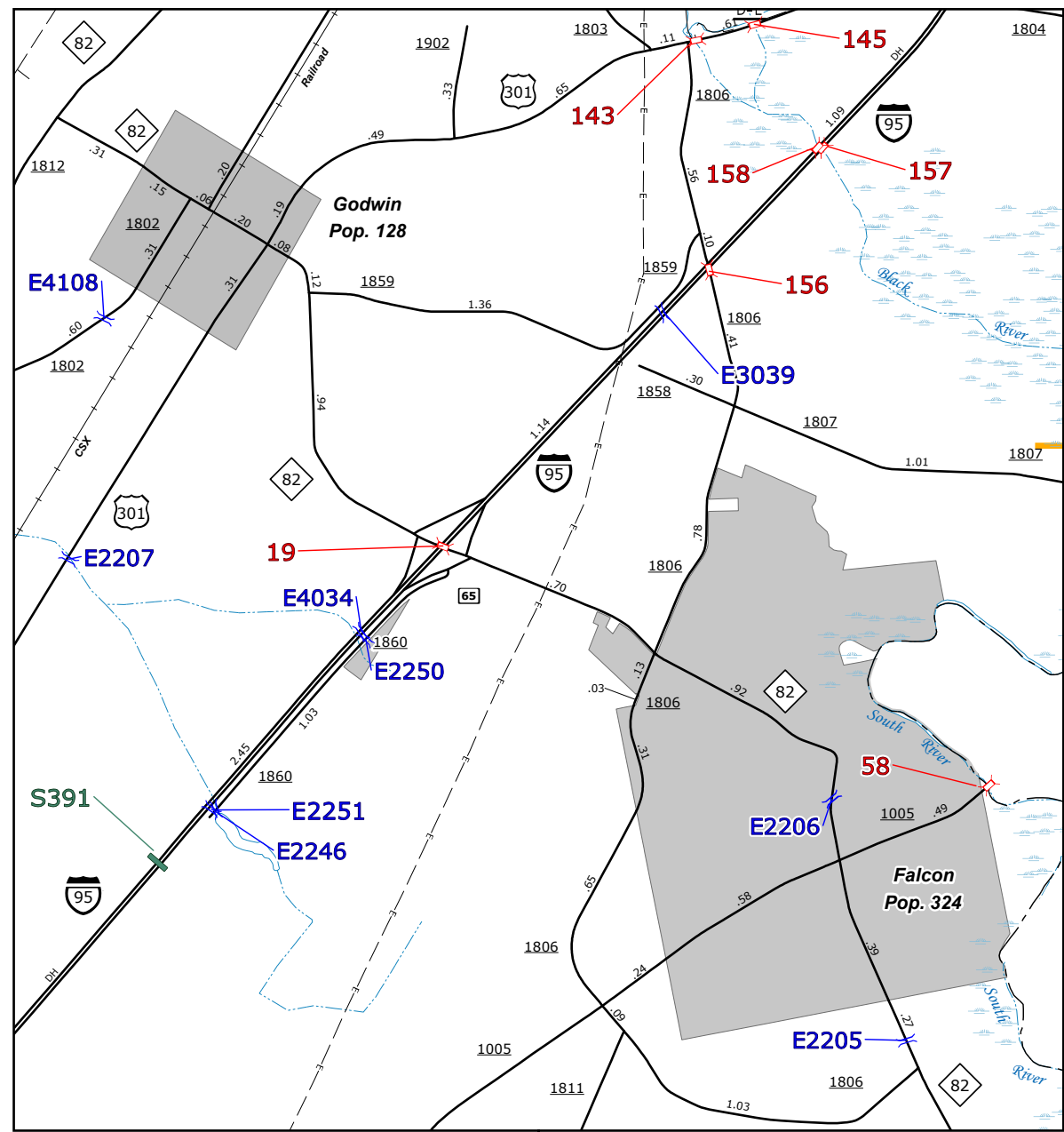


Wade

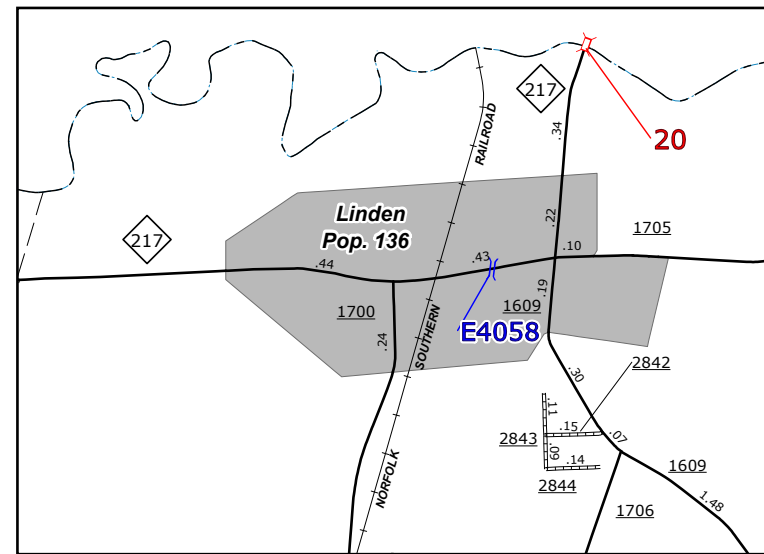
- BRIDGE
- CITY BRIDGE
- CITY SIGN
- CITY CULVERT
- CULVERT
- DRAW BRIDGE
- PEDESTRIAN BRIDGE
- NON-NBIS PIPE
- FERRY RAMP
- FEDERAL BRIDGE
- NON-SYSTEM MAINT BY NCDOT
- CANTILEVER SIGN
- PRIVATE STRUCTURE
- NCDOT OVERPASS STRUCTURE
- PAVEMENT ON PILES
- CITY PIPE
- PIPE
- RAILROAD BRIDGE
- OVERHEAD SIGN
- TUNNEL
- PEDESTRIAN UNDERPASS
- VEHICULAR UNDERPASS
- PEDESTRIAN WALKWAY
- EPOLE SIGN



Western Cumberland



Falcon

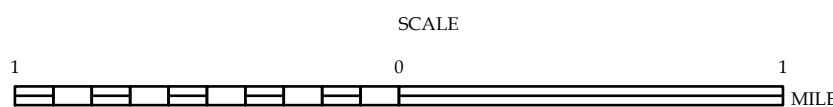


Linden



# ENLARGED MUNICIPAL AND SUBURBAN AREAS CUMBERLAND COUNTY NORTH CAROLINA BRIDGE LOCATION MAP

PREPARED BY THE  
NORTH CAROLINA DEPARTMENT OF TRANSPORTATION  
OPERATIONS PROGRAM MANAGEMENT UNIT - MAPPING SECTION  
IN COOPERATION WITH THE  
U.S. DEPARTMENT OF TRANSPORTATION  
FEDERAL HIGHWAY ADMINISTRATION



10,000 FOOT GRID BASED ON NORTH CAROLINA PLANE COORDINATE SYSTEM  
LAMBERT CONFORMAL CONIC PROJECTION