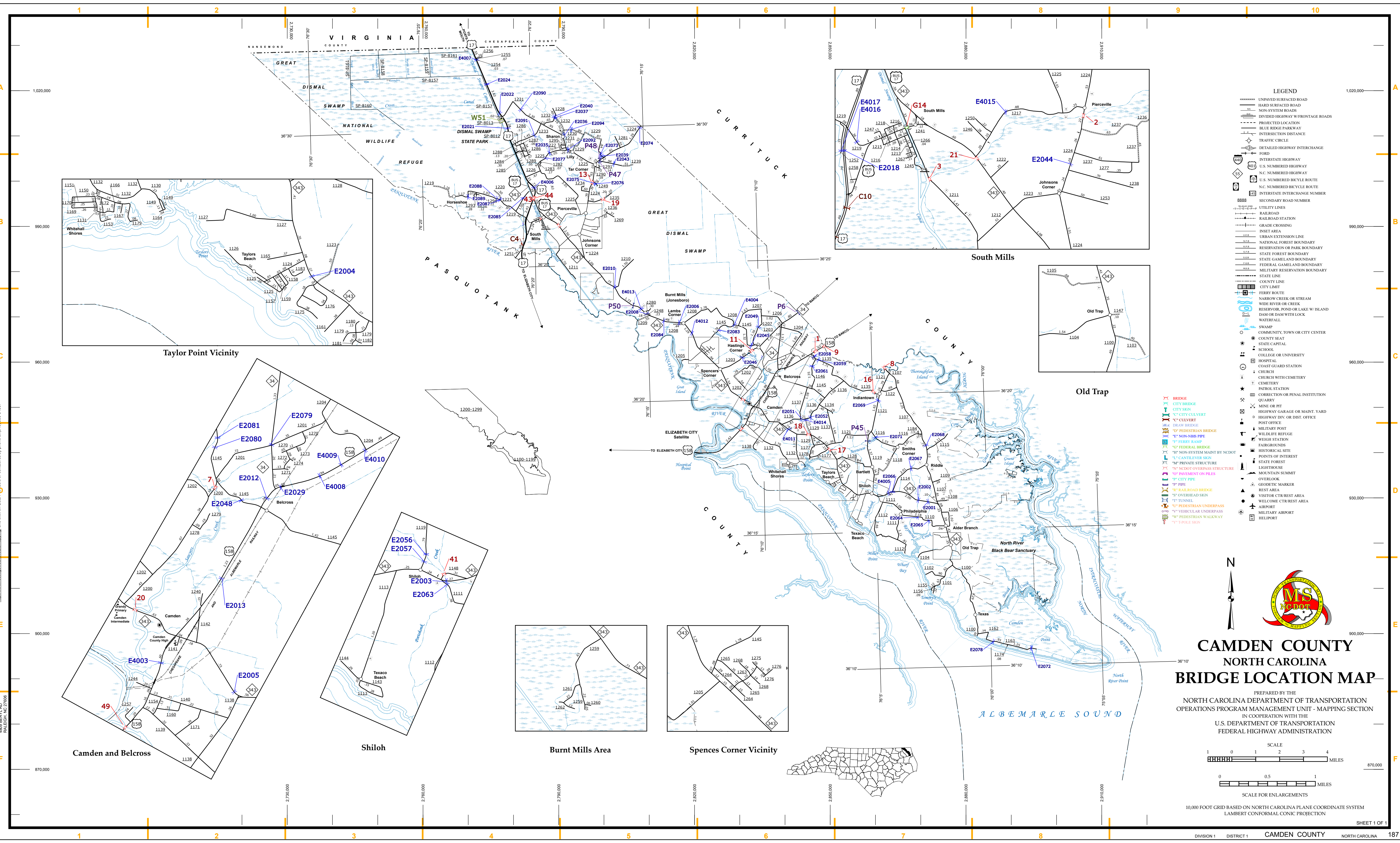


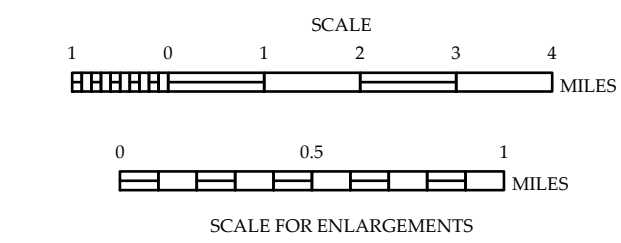
The Mapping Section's goal is to provide the most accurate and current information possible. Map data is compiled from various sources, including aerial photography, ground surveys, and other reliable sources. The accuracy of the data is not guaranteed, and the user assumes all responsibility for its use. The information shown on this map was last updated in July 2022. For additional information, visit <https://www.ncdot.gov/transportation/operations/program-management/unit-mapping-section> and click on Data Products. Users are encouraged to contact the Mapping Section at (919) 855-6400 for more information.

COPIES OF THIS MAP ARE AVAILABLE
FOR PURCHASE AT A PUBLIC NOMINAL COST.
N.C. DEPARTMENT OF TRANSPORTATION
MSAU - MAPPING SECTION
4809 BERNI RD.
CARRINGTON, NC 27813



CAMDEN COUNTY NORTH CAROLINA BRIDGE LOCATION MAP

PREPARED BY THE
NORTH CAROLINA DEPARTMENT OF TRANSPORTATION
OPERATIONS PROGRAM MANAGEMENT UNIT - MAPPING SECTION
IN COOPERATION WITH THE
U.S. DEPARTMENT OF TRANSPORTATION
FEDERAL HIGHWAY ADMINISTRATION



10,000 FOOT GRID BASED ON NORTH CAROLINA PLANE COORDINATE SYSTEM
LAMBERT CONFORMAL CONIC PROJECTION