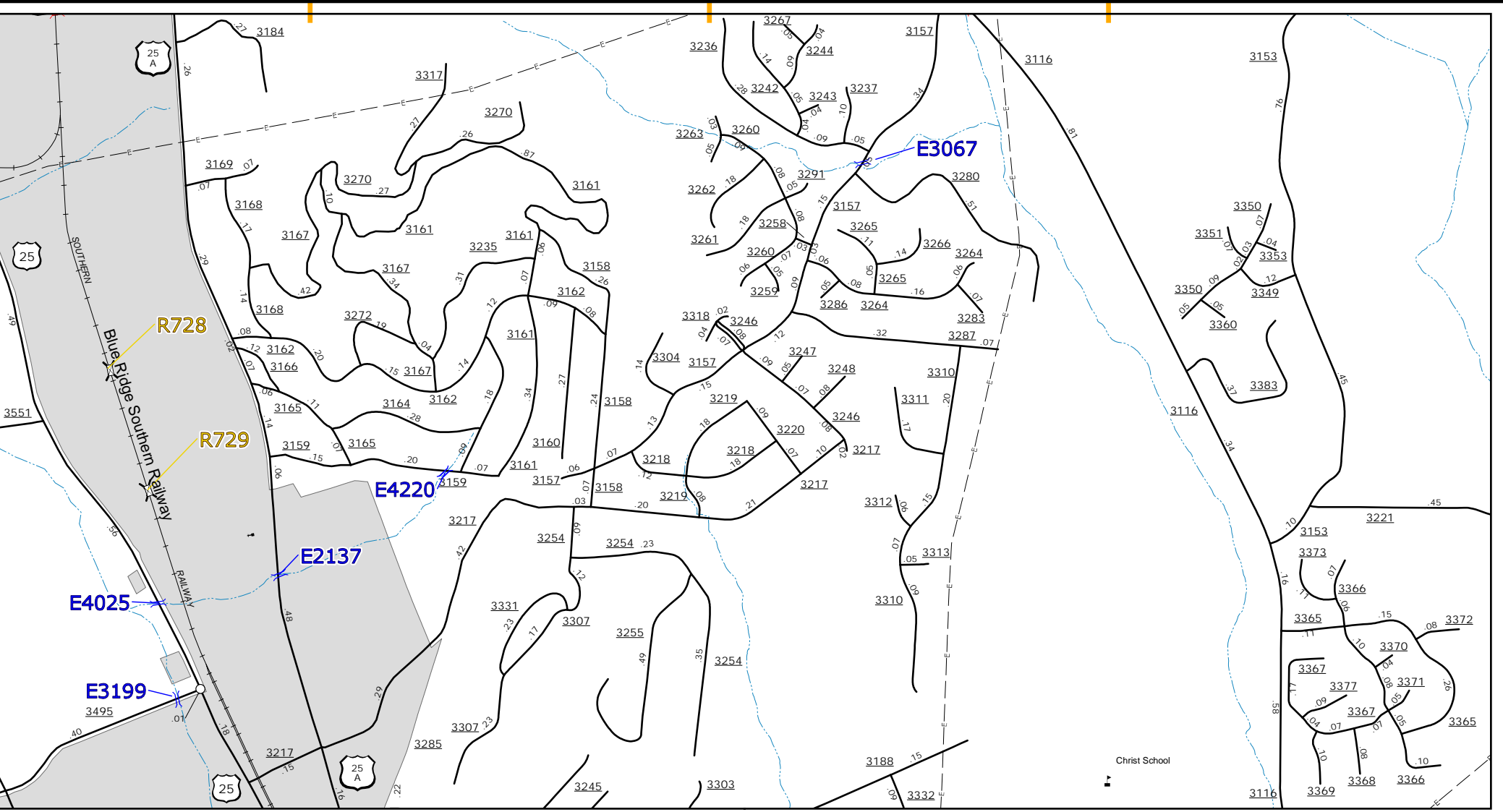


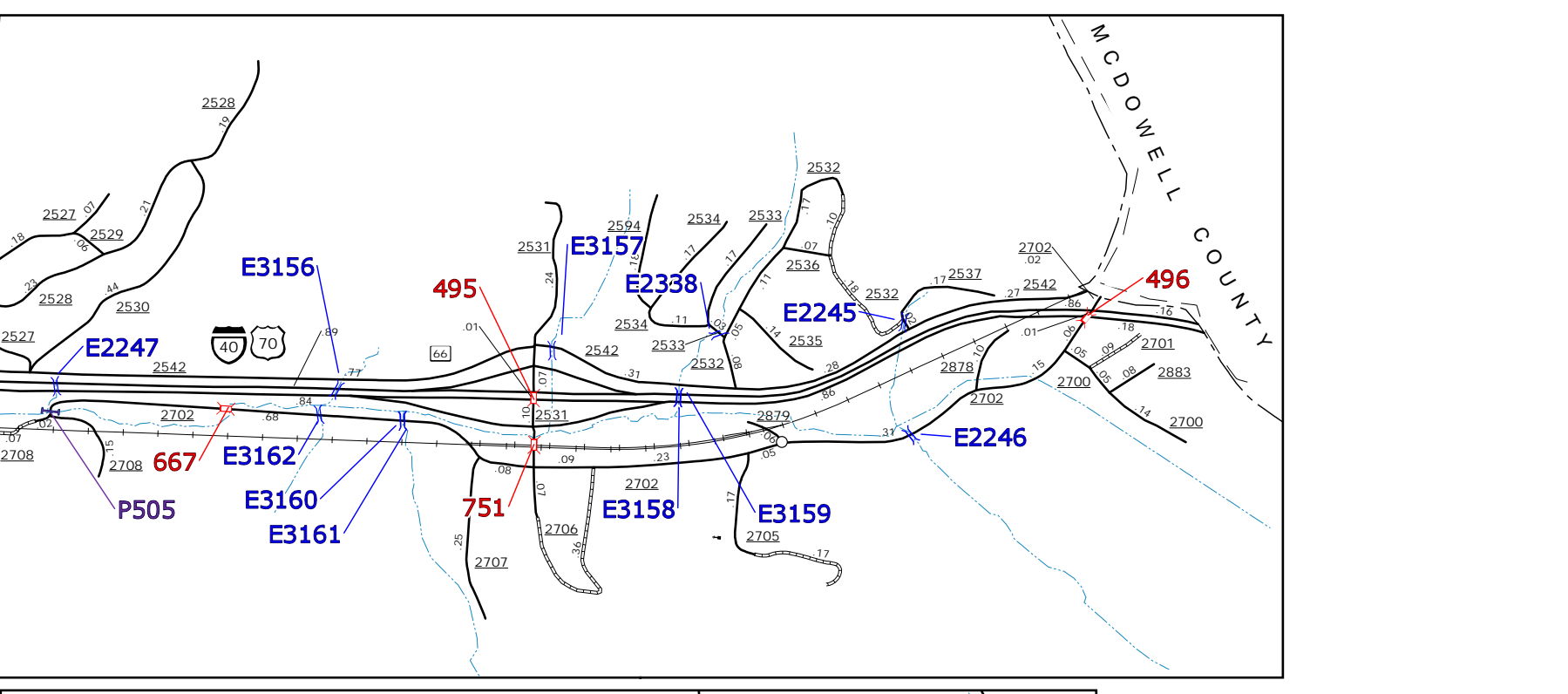
The Mapping Section's goal is to provide the most accurate and current information possible. Map data is compiled from various sources including aerial photography, ground surveys, and GIS data. The information presented on this map is for informational purposes only and does not constitute a guarantee or warranty of accuracy. For additional information, visit <http://www.ncdot.gov/transportation/operating/mau/mappingsection/> and click on Data Providers, or contact us by phone at (919) 855-8440.

COPIES OF THIS MAP ARE AVAILABLE FOR PURCHASE AT A PUBLIC UTILITY NOMINAL COST. ADDRESS: N.C. DEPARTMENT OF TRANSPORTATION MAU MAPPING SECTION 4800 BERNIE RD. CARROLTON, NC 27513



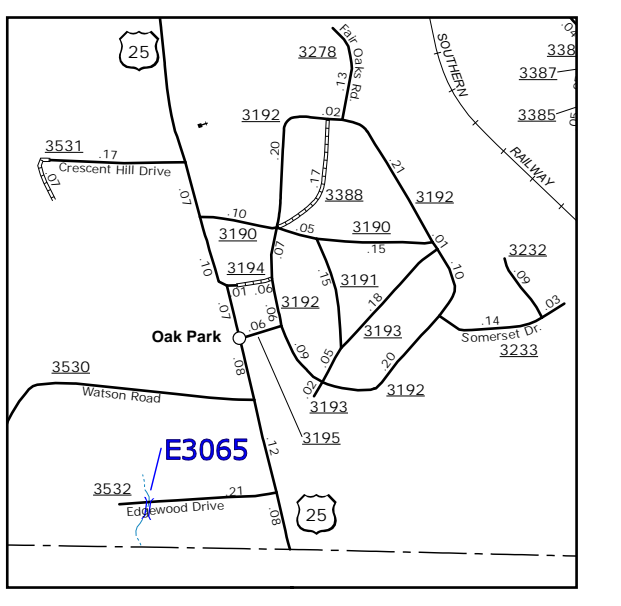
Arden

- BRIDGE
- CITY BRIDGE
- CITY SIGN
- CITY CULVERT
- CULVERT
- DRAW BRIDGE
- PEDESTRIAN BRIDGE
- NON-NRHS PIPE
- FERRY RAMP
- FEDERAL BRIDGE
- NON-SYSTEM MAINT BY NCDOT
- CASTLE OVER SIGN
- PRIVATE STRUCTURE
- NCDOT OVERPASS STRUCTURE
- PIPE
- RAILROAD BRIDGE
- OVERHEAD SIGN
- FUNNEL
- PEDESTRIAN UNDERPASS
- VEHICULAR UNDERPASS
- PEDESTRIAN WALKWAY
- TRIPLE SIGN



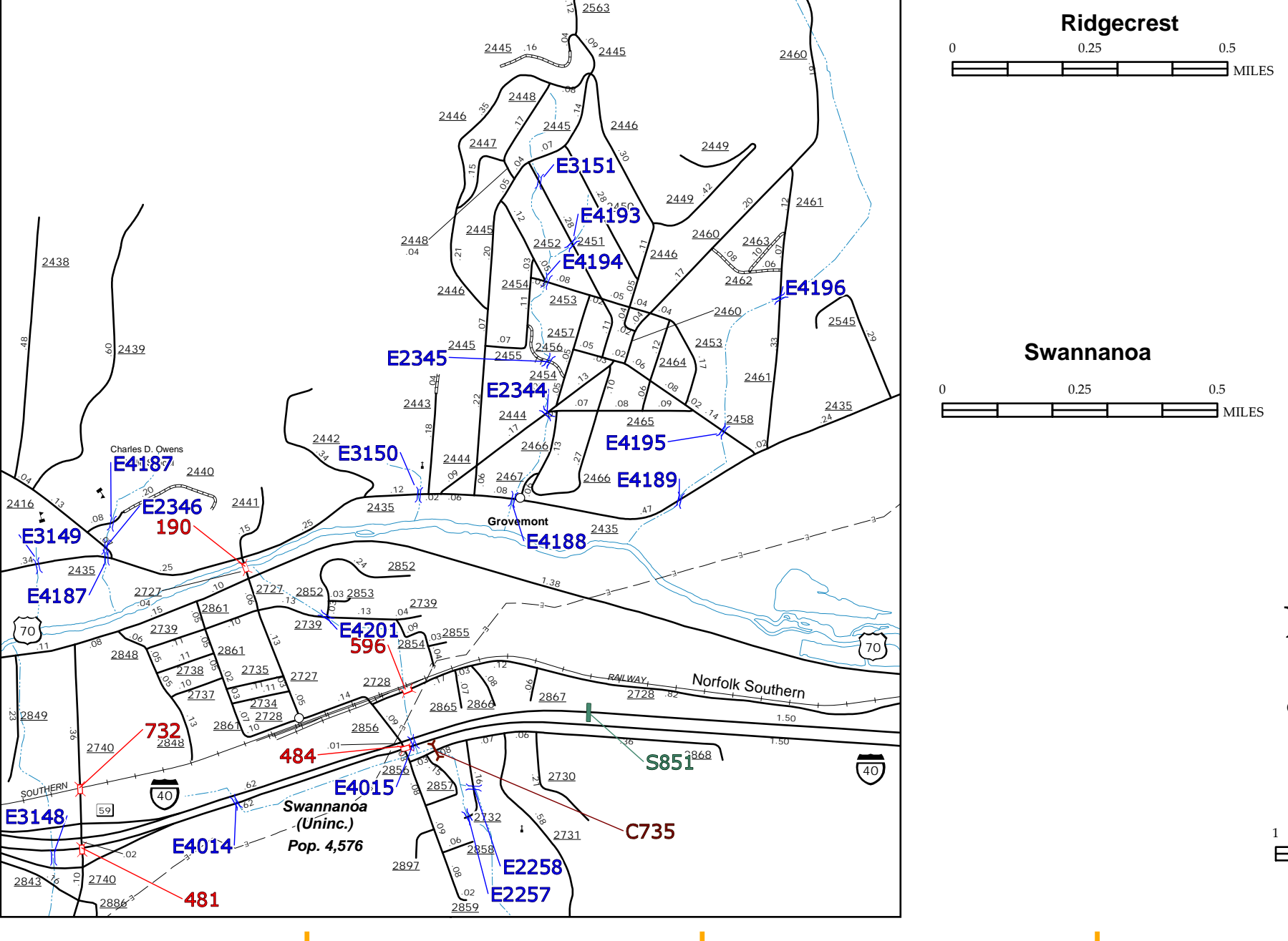
Ridgecrest

Swannanoa



Oak Park

0 0.25 0.5 MILES



ENLARGED MUNICIPAL AND SUBURBAN AREAS

BUNCOMBE COUNTY

NORTH CAROLINA

BRIDGE LOCATION MAP

PREPARED BY THE
NORTH CAROLINA DEPARTMENT OF TRANSPORTATION
OPERATIONS PROGRAM MANAGEMENT UNIT - MAPPING SECTION
IN COOPERATION WITH THE
U.S. DEPARTMENT OF TRANSPORTATION
FEDERAL HIGHWAY ADMINISTRATION

SCALE

10,000 FOOT GRID BASED ON NORTH CAROLINA PLANE COORDINATE SYSTEM
LAMBERT CONFORMAL CONIC PROJECTION

SHEET 7 OF 7