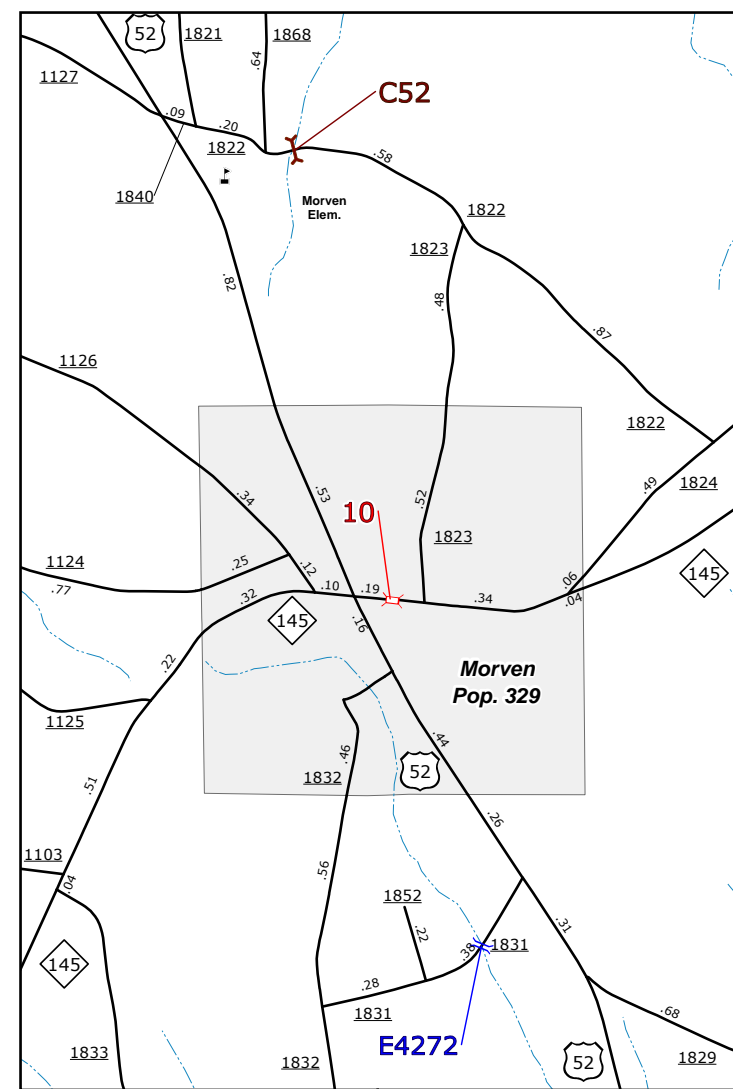
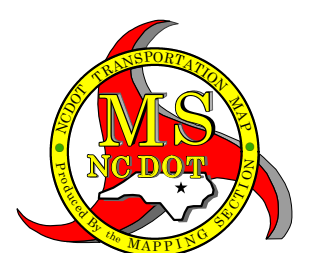


Pee Dee



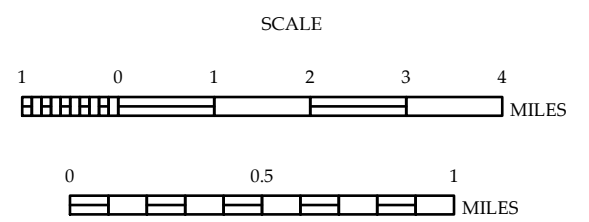
Morven

- LEGEND**
- UNPAVED SURFACED ROAD
  - HARD SURFACED ROAD
  - NON-SYSTEM ROADS
  - DIVIDED HIGHWAY FRONTAGE ROADS
  - PROTECTED LOCATION
  - BLUE RIDGE PARKWAY
  - INTERSECTION DISTANCE
  - TRAFFIC CIRCLE
  - DETAILED HIGHWAY INTERCHANGE
  - FORD
  - INTERSTATE HIGHWAY
  - U.S. NUMBERED HIGHWAY
  - N.C. NUMBERED HIGHWAY
  - U.S. NUMBERED BICYCLE ROUTE
  - N.C. NUMBERED BICYCLE ROUTE
  - INTERSTATE INTERCHANGE NUMBER
  - SECONDARY ROAD NUMBER
  - UTILITY LINES
  - RAILROAD
  - RAILROAD STATION
  - GRADE CROSSING
  - INSET AREA
  - URBAN EXTENSION LINE
  - NATIONAL FOREST BOUNDARY
  - RESERVATION OR PARK BOUNDARY
  - STATE FOREST BOUNDARY
  - STATE GAMBEL BOUNDARY
  - FEDERAL GAMBEL BOUNDARY
  - MILITARY RESERVATION BOUNDARY
  - STATE LINE
  - COUNTY LINE
  - CITY LIMIT
  - COUNTY SEAT
  - STATE CAPITAL
  - SCHOOL
  - COLLEGE OR UNIVERSITY
  - HOSPITAL
  - COAST GUARD STATION
  - CHURCH
  - CHURCH WITH CEMETERY
  - CEMETERY
  - PATROL STATION
  - CORRECTION OR PENAL INSTITUTION
  - QUARRY
  - MINE OR PIT
  - HIGHWAY GARAGE OR MAINT. YARD
  - HIGHWAY DIV. OR DIST. OFFICE
  - POST OFFICE
  - MILITARY POST
  - WILDLIFE REFUGE
  - WEIGH STATION
  - FAIRGROUNDS
  - HISTORICAL SITE
  - POINTS OF INTEREST
  - STATE FOREST
  - LIGHTHOUSE
  - MOUNTAIN SUMMIT
  - OVERLOOK
  - GEODETIC MARKER
  - REST AREA
  - VISITOR CTR. REST AREA
  - WELCOME CTR. REST AREA
  - AIRPORT
  - MILITARY AIRPORT
  - HELIPORT
- BRIDGE**
- BRIDGE
  - CITY BRIDGE
  - CITY SIGN
  - CITY CULVERT
  - CULVERT
  - DRAW BRIDGE
  - PEDESTRIAN BRIDGE
  - NON-NBIS PIPE
  - FERRY RAMP
  - FEDERAL BRIDGE
  - NON-SYSTEM MAINT BY NCDOT
  - CANTILEVER SIGN
  - PRIVATE STRUCTURE
  - NCDOT OVERPASS STRUCTURE
  - PAVEMENT ON PILES
  - CITY PIPE
  - PIPE
  - RAILROAD BRIDGE
  - OVERHEAD SIGN
  - TUNNEL
  - PEDESTRIAN UNDERPASS
  - VEHICULAR UNDERPASS
  - PEDESTRIAN WALKWAY
  - FOOT SIGN



# ANSON COUNTY NORTH CAROLINA BRIDGE LOCATION MAP

PREPARED BY THE  
NORTH CAROLINA DEPARTMENT OF TRANSPORTATION  
OPERATIONS PROGRAM MANAGEMENT UNIT - MAPPING SECTION  
IN COOPERATION WITH THE  
U.S. DEPARTMENT OF TRANSPORTATION  
FEDERAL HIGHWAY ADMINISTRATION



10,000 FOOT GRID BASED ON NORTH CAROLINA PLANE COORDINATE SYSTEM  
LAMBERT CONFORMAL CONIC PROJECTION

The Mapping Section's goal is to provide the most accurate and current information possible. Map data is compiled from numerous sources and is subject to change without notice. The accuracy of the information is not guaranteed. For additional information, visit <http://www.ncdot.gov/aval/avalmain.asp> and click on Data Providers or contact us by phone at (919) 835-8480.

COPIES OF THIS MAP ARE AVAILABLE  
N.C. DEPARTMENT OF TRANSPORTATION  
ADDRESS: 4800 BERNARD  
Raleigh, NC 27606