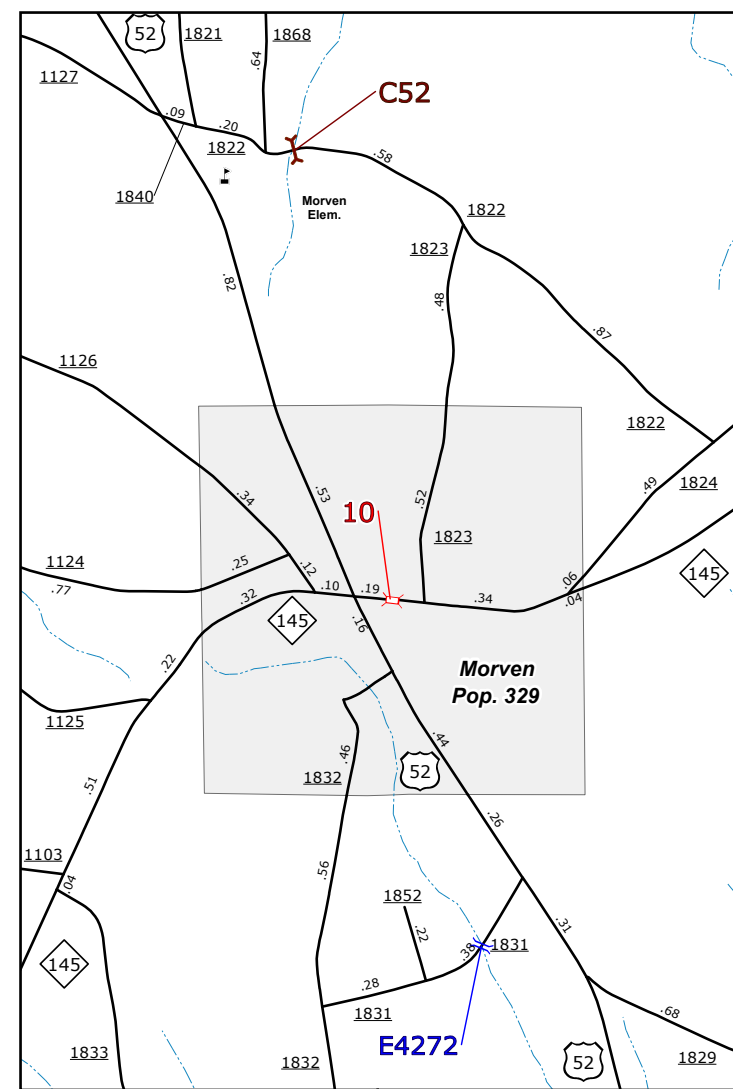


Pee Dee



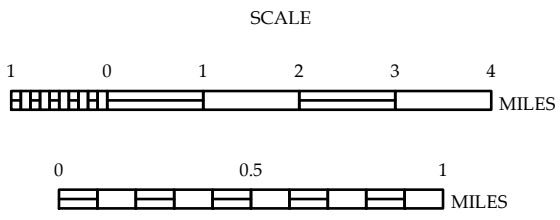
Morven

- LEGEND**
- UNPAVED SURFACED ROAD
 - HARD SURFACED ROAD
 - NON-SYSTEM ROADS
 - DIVIDED HIGHWAY FRONTAGE ROADS
 - PROTECTED LOCATION
 - BLUE RIDGE PARKWAY
 - INTERSECTION DISTANCE
 - TRAFFIC CIRCLE
 - DETAILED HIGHWAY INTERCHANGE
 - FORD
 - INTERSTATE HIGHWAY
 - U.S. NUMBERED HIGHWAY
 - N.C. NUMBERED HIGHWAY
 - U.S. NUMBERED BICYCLE ROUTE
 - N.C. NUMBERED BICYCLE ROUTE
 - INTERSTATE INTERCHANGE NUMBER
 - SECONDARY ROAD NUMBER
 - UTILITY LINES
 - RAILROAD
 - RAILROAD STATION
 - GRADE CROSSING
 - INSET AREA
 - URBAN EXTENSION LINE
 - NATIONAL FOREST BOUNDARY
 - RESERVATION OR PARK BOUNDARY
 - STATE FOREST BOUNDARY
 - STATE GAMELAND BOUNDARY
 - FEDERAL GAMELAND BOUNDARY
 - MILITARY RESERVATION BOUNDARY
 - STATE LINE
 - COUNTY LINE
 - CITY LIMIT
 - FERRY ROUTE
 - NARROW CREEK OR STREAM
 - WIDE RIVER OR CREEK
 - RESERVOIR, POND OR LAKE W/ ISLAND
 - DAM OR DAM WITH LOCK
 - WATERFALL
 - SWAMP
 - COMMUNITY, TOWN OR CITY CENTER
 - COUNTY SEAT
 - STATE CAPITAL
 - SCHOOL
 - COLLEGE OR UNIVERSITY
 - HOSPITAL
 - COAST GUARD STATION
 - CHURCH
 - CHURCH WITH CEMETERY
 - CEMETERY
 - PATROL STATION
 - CORRECTION OR PENAL INSTITUTION
 - QUARRY
 - MINE OR PIT
 - HIGHWAY GARAGE OR MAINT. YARD
 - HIGHWAY DIV. OR DIST. OFFICE
 - POST OFFICE
 - MILITARY POST
 - WILDLIFE REFUGE
 - WEIGH STATION
 - FAIRGROUNDS
 - HISTORICAL SITE
 - POINTS OF INTEREST
 - STATE FOREST
 - LIGHTHOUSE
 - MOUNTAIN SUMMIT
 - OVERLOOK
 - GEODETIC MARKER
 - REST AREA
 - VISITOR CTR/REST AREA
 - WELCOME CTR/REST AREA
 - AIRPORT
 - MILITARY AIRPORT
 - HELIPORT
- BRIDGE**
- BRIDGE
 - CITY BRIDGE
 - CITY SIGN
 - "N" CITY CULVERT
 - "C" CULVERT
 - DRAW BRIDGE
 - "D" PEDESTRIAN BRIDGE
 - "N" NON-NHS PIPE
 - "F" FERRY RAMP
 - "Q" FEDERAL BRIDGE
 - "H" NON-SYSTEM MAINT BY NCDOT
 - "L" CANTILEVER SIGN
 - "M" PRIVATE STRUCTURE
 - "N" NCDOT OVERPASS STRUCTURE
 - "P" PAVEMENT ON PILES
 - "C" CITY PIPE
 - "P" PIPE
 - "R" RAILROAD BRIDGE
 - "S" OVERHEAD SIGN
 - "T" TUNNEL
 - "U" PEDESTRIAN UNDERPASS
 - "V" VEHICULAR UNDERPASS
 - "W" PEDESTRIAN WALKWAY
 - "Y" FENCE SIGN



ANSON COUNTY NORTH CAROLINA BRIDGE LOCATION MAP

PREPARED BY THE
NORTH CAROLINA DEPARTMENT OF TRANSPORTATION
OPERATIONS PROGRAM MANAGEMENT UNIT - MAPPING SECTION
IN COOPERATION WITH THE
U.S. DEPARTMENT OF TRANSPORTATION
FEDERAL HIGHWAY ADMINISTRATION



10,000 FOOT GRID BASED ON NORTH CAROLINA PLANE COORDINATE SYSTEM
LAMBERT CONFORMAL CONIC PROJECTION

The Mapping Section's goal is to provide the most accurate and current information possible. Map data is compiled from numerous sources and is subject to change without notice. The accuracy of the information is not guaranteed. For additional information, visit <http://www.ncdot.gov/transportation/mapping> and click on Data Providers or contact us by phone at (919) 833-8480.

COPIES OF THIS MAP ARE AVAILABLE
N.C. DEPARTMENT OF TRANSPORTATION
ADDRESS: 4801 BERNI RD
RALEIGH, NC 27606