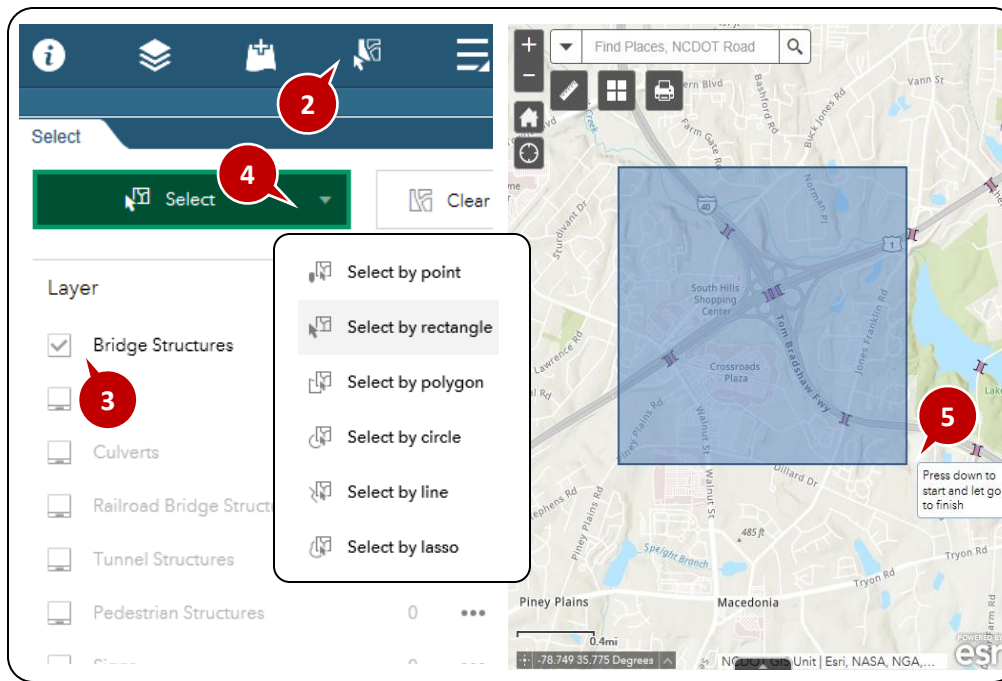
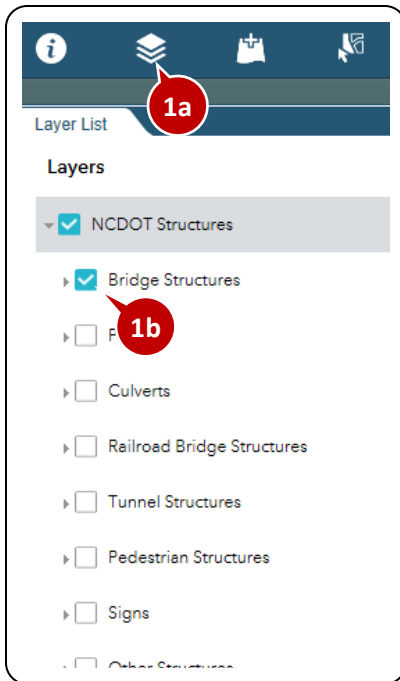
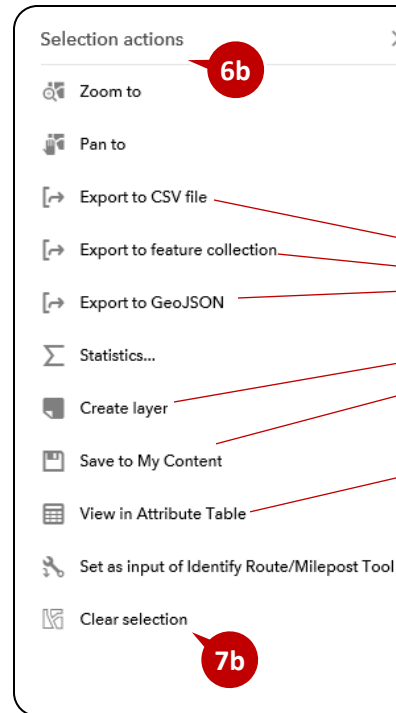
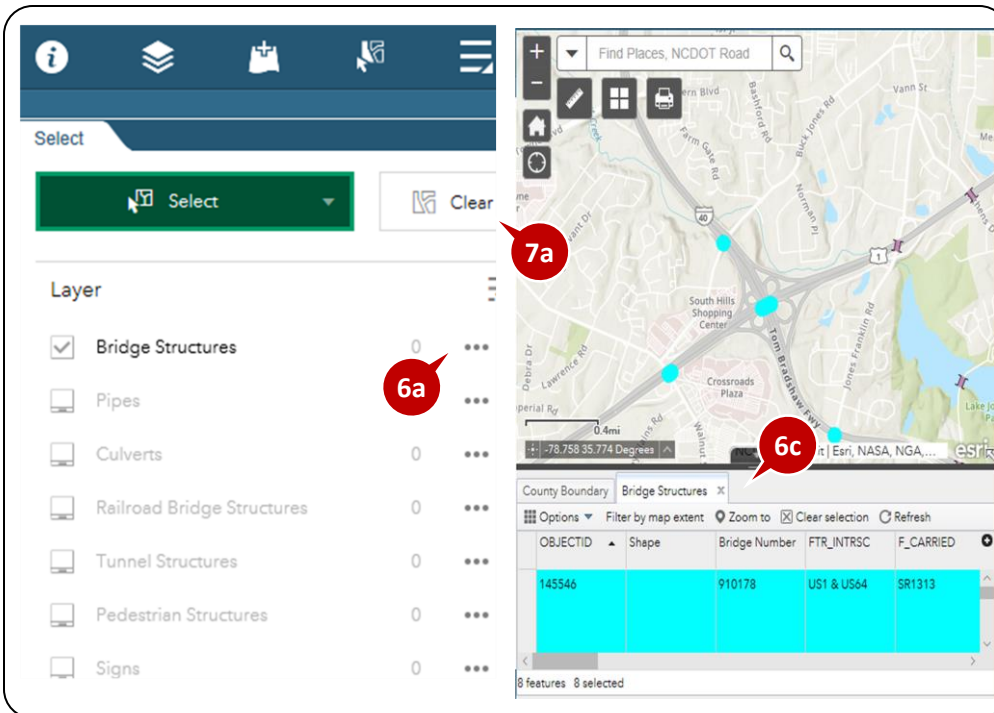


SDV 2.0 User Guide – Select Tool



1. Make sure the features you wish to select are checked on in the **Layers List Tool**.
2. Click the icon to open the Select toolbar
3. To select features from a layer, it must be checked and not be grayed out.
4. The Select button gives a list of methods to use for selection
5. Click on the map and hold the button to draw the area you are selecting



6. Click on the 3 dots to open the Selection Actions, which gives you tools such as:
 - Exporting to different formats
 - Creating new data out of your selection in AGOL
 - Viewing selection in attribute table (6c)
 - Get LRS Milepoint
7. Clear the selected features to perform a new selection