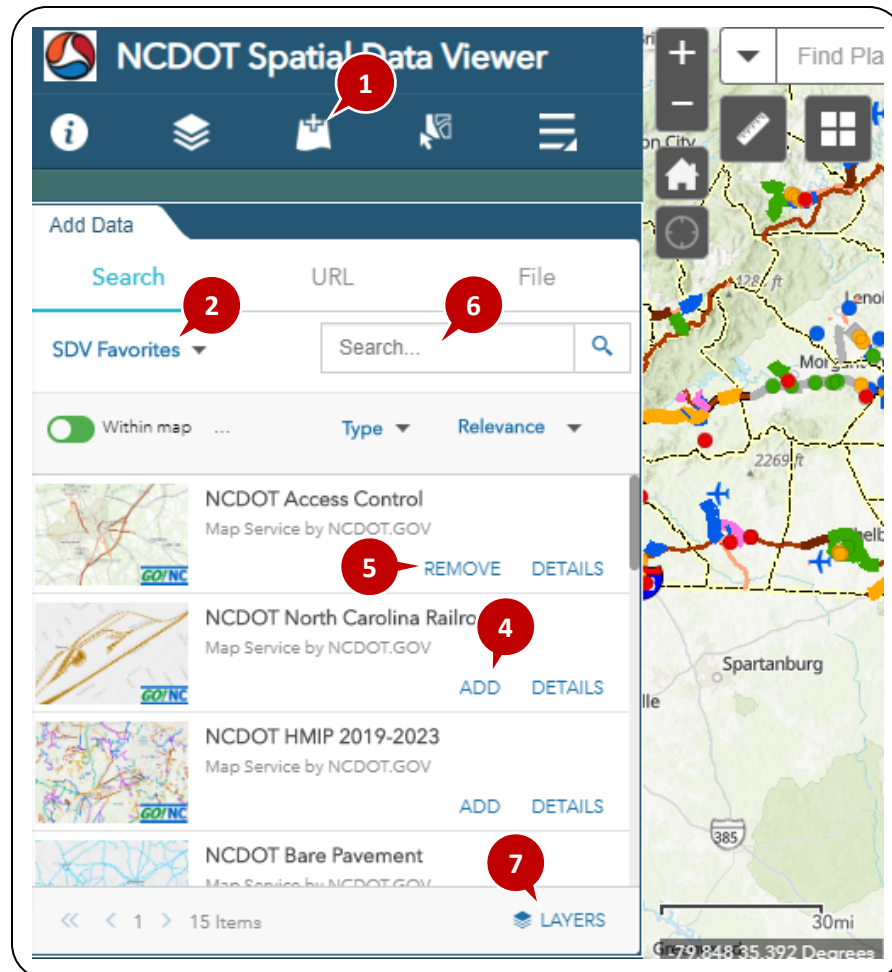


# Spatial Data Viewer (SDV) User Guide – Add Data Tool – Add From GO!NC



## Add Data from GO!NC

1. Click on the **Add Data** button to open the panel.
2. When the tool first opens, the selected category is “SDV Favorites.”
3. Change the category of layers to view or search. You will see a different list of categories if you are logged into GO!NC.
4. Click on “ADD” to add a layer to the map.
5. Click on “DELETE” to remove a layer from the map
6. Use the Search box to find a specific layer or filter the list.
7. To view or delete layers you’ve added to the map, click on “LAYERS” at the bottom of the panel.
8. From the “LAYERS” list, click on the trashcan next to the layer to remove it from the map.

Note: You cannot remove a layer using the **Layer List Tool**.

