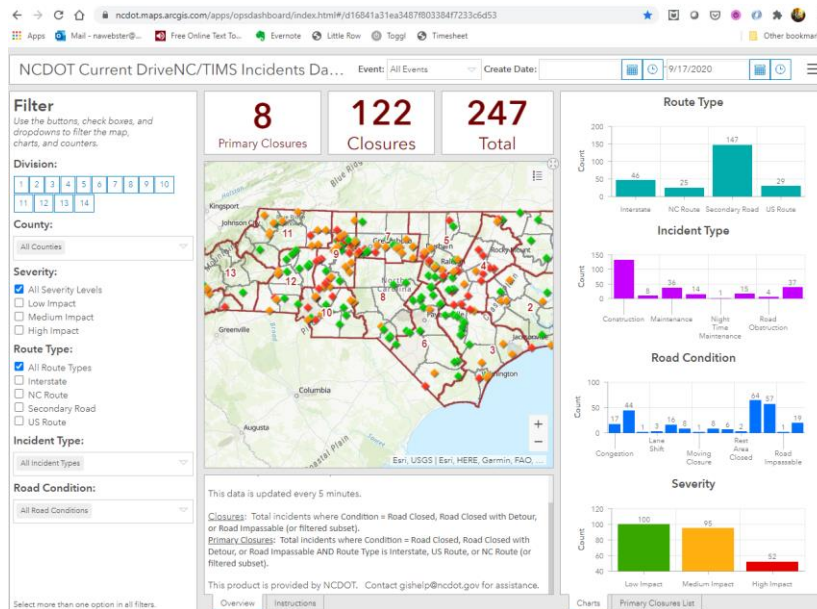



NCDOT Current DriveNC/TIMS Incidents Dashboard Instructions



1. Go to the [GO!NC GIS Page](#) > Featured Products > Incidents & Events > DriveNC/TIMS Dashboard, or go to the [direct link](#).
2. This page provides three counters at the top: Primary closures are the count of primary (I, US, NC) roads which are closed; All closures; and Total of all incidents (closures or otherwise). It shows them on an interactive map, with clickable icons to get details about each incident. On the righthand side are tallies of the incidents by Route Type, Incident Type, Road Condition, and Severity. Click the Primary Closures List tab at the bottom right to get a complete list and details of all closures on the primary roads. These results are all based on filter conditions in steps 3, 4, and 5 below. Otherwise it will default to show all active incidents, no matter how old.
3. If there is a TIMS event for this storm, you can select the event in the Event dropdown selector at the top. Otherwise use the date selector in 3.
4. If not using the Event selector, at the top, enter the date range starting a day before the storm (e.g. 9/17/2020) in the first field of the Create Date date range. Leave the second field blank.

Create Date:

5. On the left sidebar, you can pick your geographies (NCDOT Division or County), Incident Severity, Route Type (Interstate, etc.), Incident Type (e.g. Weather Event), or Road Condition (e.g. Road Closed), and the dashboard will immediately apply these filters to the counters, map, and primary closure lists.
6. The hamburger menu  at the upper right gives links back to NCDOT GIS and NCDOT Home Pages.