



STATE OF NORTH CAROLINA
DEPARTMENT OF TRANSPORTATION

ROY COOPER
GOVERNOR

J. ERIC BOYETTE
SECRETARY

DATE: June 1, 2023
TO: S. Pat Ivey, PE
Division Engineer
Division 9
FROM: Erin Lesh, GISP
Supervisor, Spatial Data Operations Group
Geographic Information Systems Unit
SUBJECT: 2023 District 2 Road System Changes

The GIS Unit's Spatial Data Operations Group has been authorized to make the changes indicated below to the state road system. We request that you update the related maps and files in your offices and install appropriate road number signs, if necessary. If our system changes do not conform to the actual conditions in the field, please return this memorandum with recommendations.

Document Number	County	Approval Date
HTO_034_05-23	FORSYTH	05/11/2023

Questions or comments about changes should be referred to the GIS Help Desk at GISHelp@ncdot.gov.

Thank you for your assistance.

EAL

cc: BSIP
Bridge Maintenance
Division Right of Way
IMG
Pavement Management
Permit Unit
State Road Maintenance
Traffic Engineering
Traffic Surveys

MAILING ADDRESS:
NC DEPARTMENT OF TRANSPORTATION
GEOGRAPHIC INFORMATION SYSTEMS UNIT
1521 MAIL SERVICE CENTER
RALEIGH, NC 27699-1521

Telephone: (919) 707-2165
FAX: 919-707-2210
Customer Service: 1-877-368-4968
Website: www.ncdot.gov

LOCATION:
4101 CAPITAL BLVD.
RALEIGH, NC 27604

2023 Road System Changes

Project Name: HTO_034_05-23
Date: 05/11/2023
County: FORSYTH

Additions

Route	Street Name	Mileage	Map
NC 66		0.34	D
NC 74		6.7	A
NC 8		0.6	D
NC 66		0.73	E
SR 2219		0.43	B
SR 2495		0.11	B
SR 2211		0.44	C
SR 1929		0.49	D
SR 2207		0.04	D
SR 1665		0.11	E
SR 4000		0.11	E
SR 4038		0.02	E
SR 4040		0.23	E

Deletions

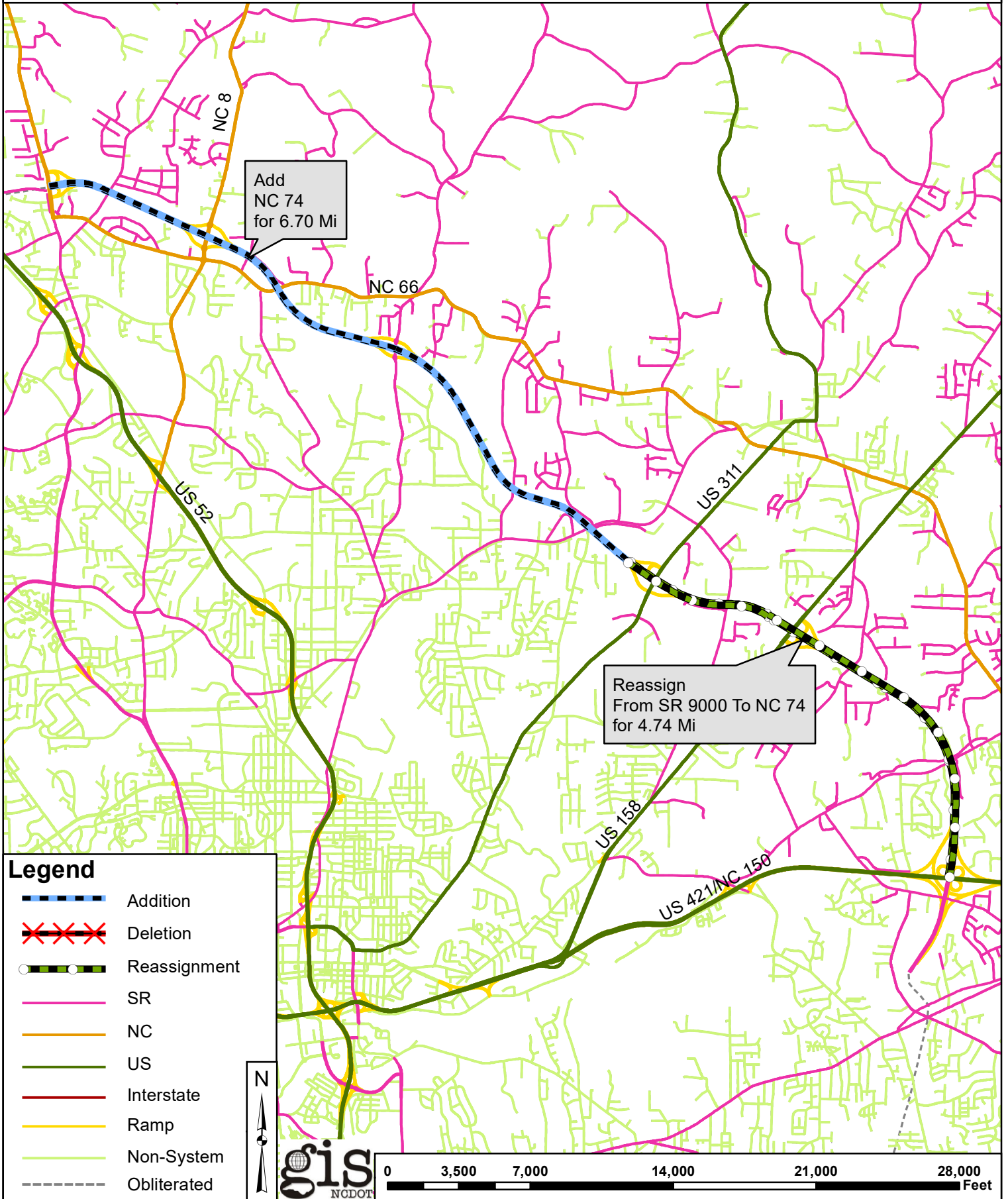
Route	Street Name	Mileage	Map
NC 66		0.33	D
NC 8		0.59	D
NC 66		0.5	E
SR 2219		0.24	B

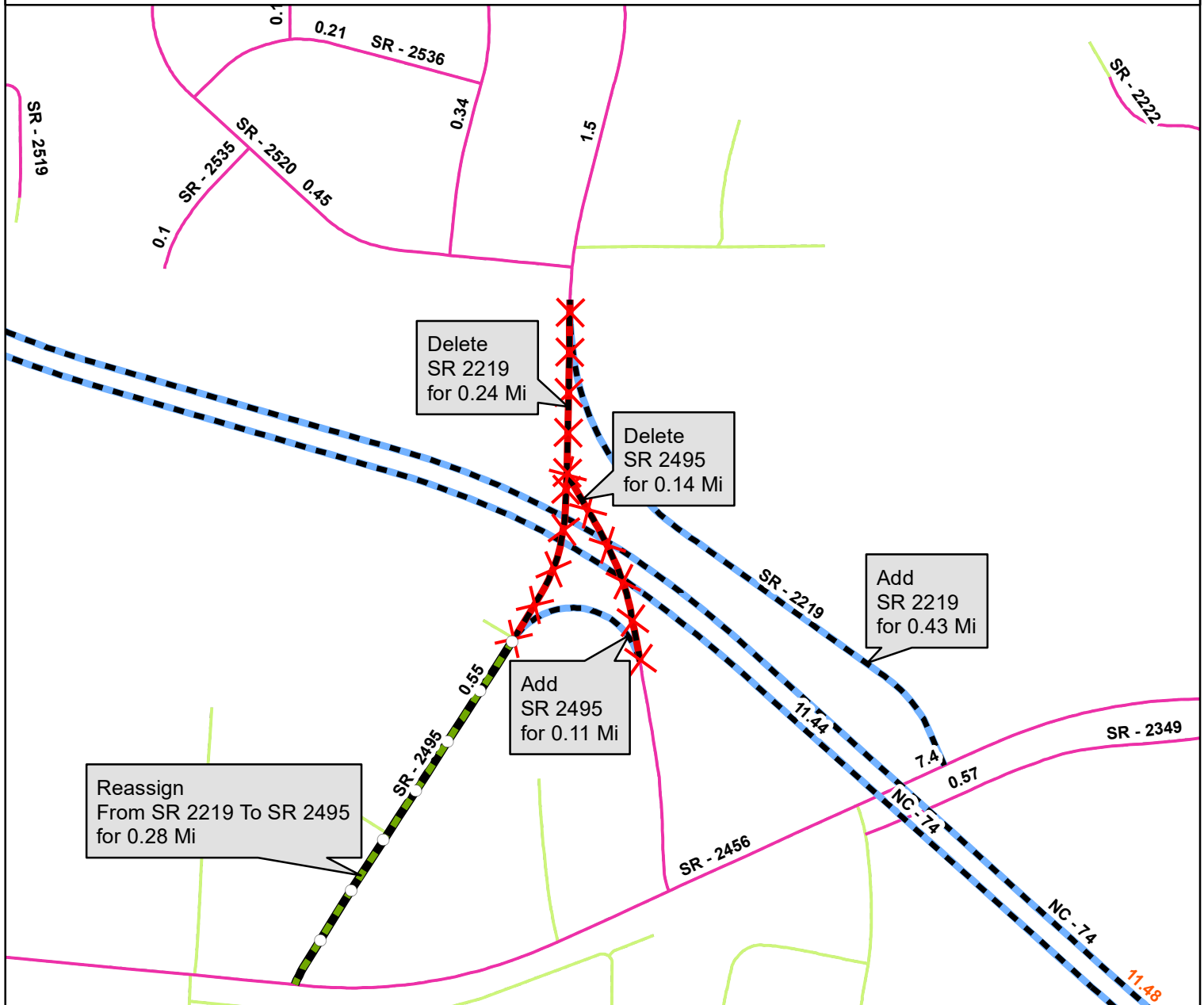
Deletions

Route	Street Name	Mileage	Map
SR 2495		0.14	B
SR 2253		0.11	C
SR 2528		0.22	C
SR 2558		0.13	C
SR 2557		0.14	C
SR 2211		0.42	C
SR 1929		0.12	D
SR 2207		0.05	D
SR 2104		0.04	D
SR 1665		0.11	E
SR 4000		0.16	E

Reassignments

Existing Route	New Route	Street Name	Mileage	Map
SR 9000	NC 74		4.74	A
NC 66	SR 4038		0.05	E
NC 66	SR 4039		0.13	E
SR 2219	SR 2495		0.28	B
SR 1929	SR 4596		0.13	D
SR 4000	SR 4039		0.06	E

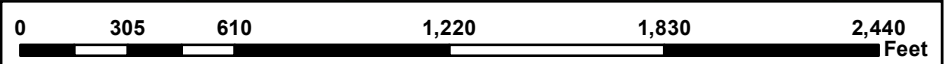


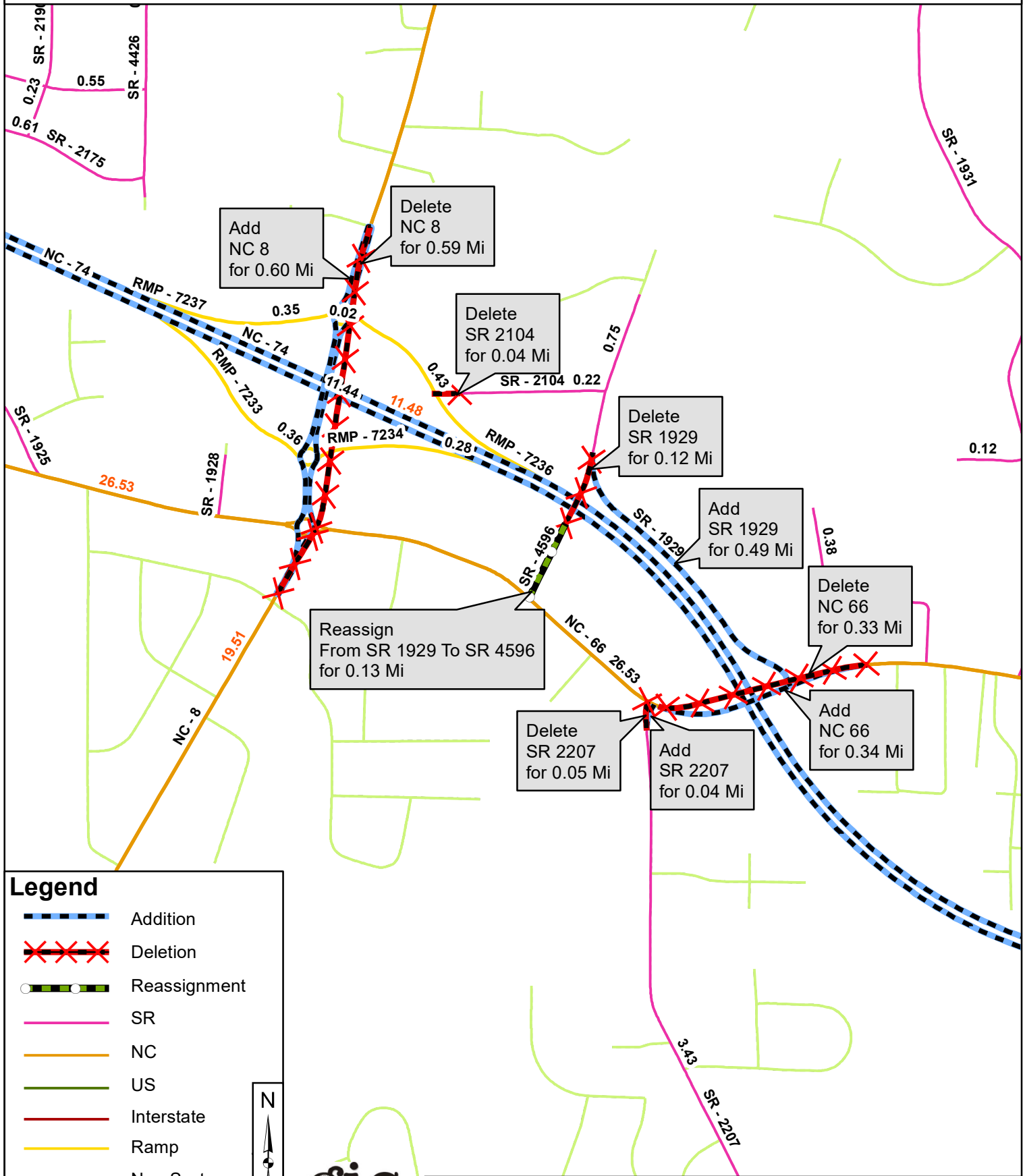


Legend

- Addition
- Deletion
- Reassignment
- SR
- NC
- US
- Interstate
- Ramp
- Non-System
- Obliterated

N





Legend

-  Addition
-  Deletion
-  Reassignment
-  SR
-  NC
-  US
-  Interstate
-  Ramp
-  Non-System
-  Obliterated

