



STATE OF NORTH CAROLINA
DEPARTMENT OF TRANSPORTATION

ROY COOPER
GOVERNOR

J. ERIC BOYETTE
SECRETARY

DATE: March 9, 2022

TO: Brett D. Canipe, PE
Division Engineer
Division 10

FROM: Erin Lesh, GISP
Supervisor, Spatial Data Operations Group
Geographic Information Systems Unit

SUBJECT: 2022 District 1 Road System Changes

The GIS Unit's Spatial Data Operations Group has been authorized to make the changes indicated below to the state road system. We request that you update the related maps and files in your offices and install appropriate road number signs, if necessary. If our system changes do not conform to the actual conditions in the field, please return this memorandum with recommendations.

Document Number	County	Approval Date
I-3802A	CABARRUS	11/22/2021

Questions or comments about changes should be referred to the GIS Help Desk at GISHelp@ncdot.gov.

Thank you for your assistance.

EAL

cc: BSIP
Bridge Maintenance
Division Right of Way
IMG
Pavement Management
Permit Unit
State Road Maintenance
Traffic Engineering
Traffic Surveys

MAILING ADDRESS:
NC DEPARTMENT OF TRANSPORTATION
GEOGRAPHIC INFORMATION SYSTEMS UNIT
1521 MAIL SERVICE CENTER
RALEIGH, NC 27699-1521

Telephone: (919) 707-2165
FAX: 919-707-2210
Customer Service: 1-877-368-4968
Website: www.ncdot.gov

LOCATION:
4101 CAPITAL BLVD.
RALEIGH, NC 27604

2022 Road System Changes

TIP Name: I-3802A
Date: 11/22/2021
County: CABARRUS

Additions

Route	Street Name	Mileage	Map
US 29		0.46	C
SR 1790		0.47	A
SR 2001		0.04	A
SR 1008		0.94	B
SR 2180		0.59	D
SR 2205		0.05	D

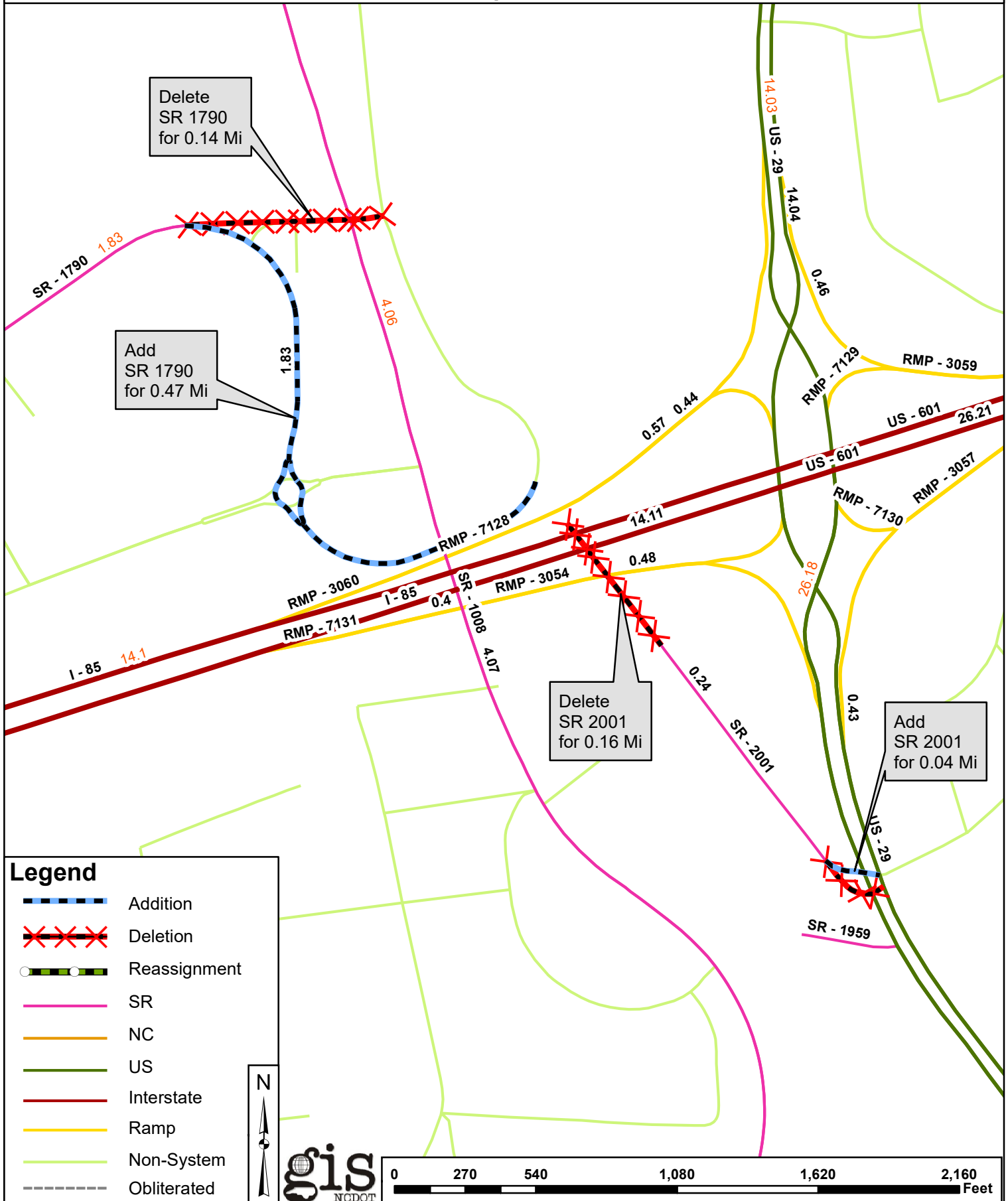
Deletions

Route	Street Name	Mileage	Map
US 29		0.39	C
SR 1790		0.14	A
SR 2001		0.16	A
SR 1008		0.45	B
SR 2180		0.57	D
SR 2205		0.02	D

Reassignments

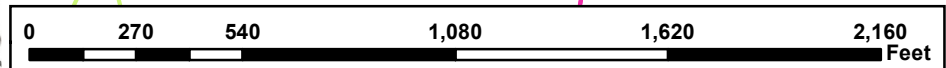
Existing Route	New Route	Street Name	Mileage	Map
SR 1008	SR 1959		0.07	B

Map A

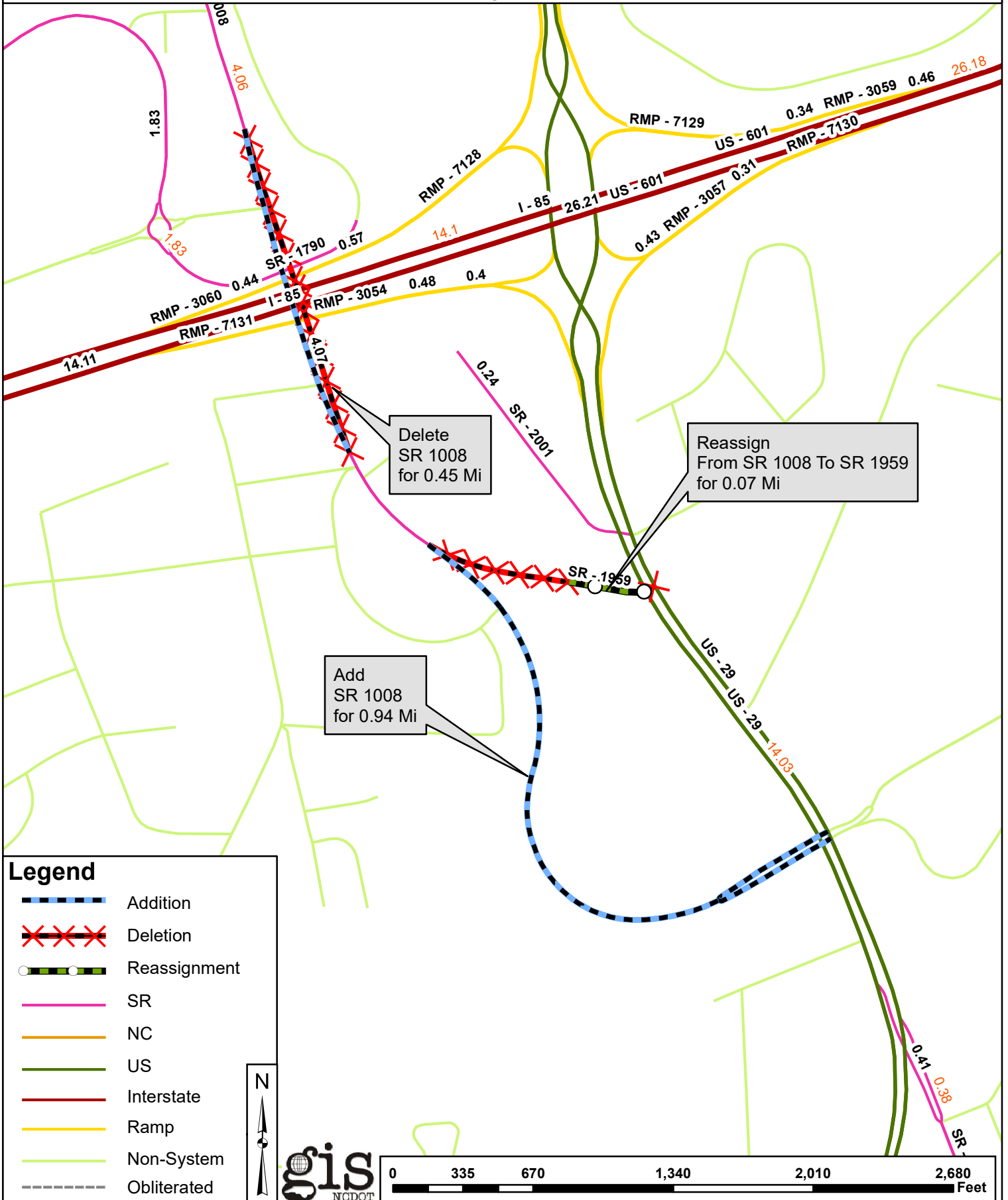


Legend

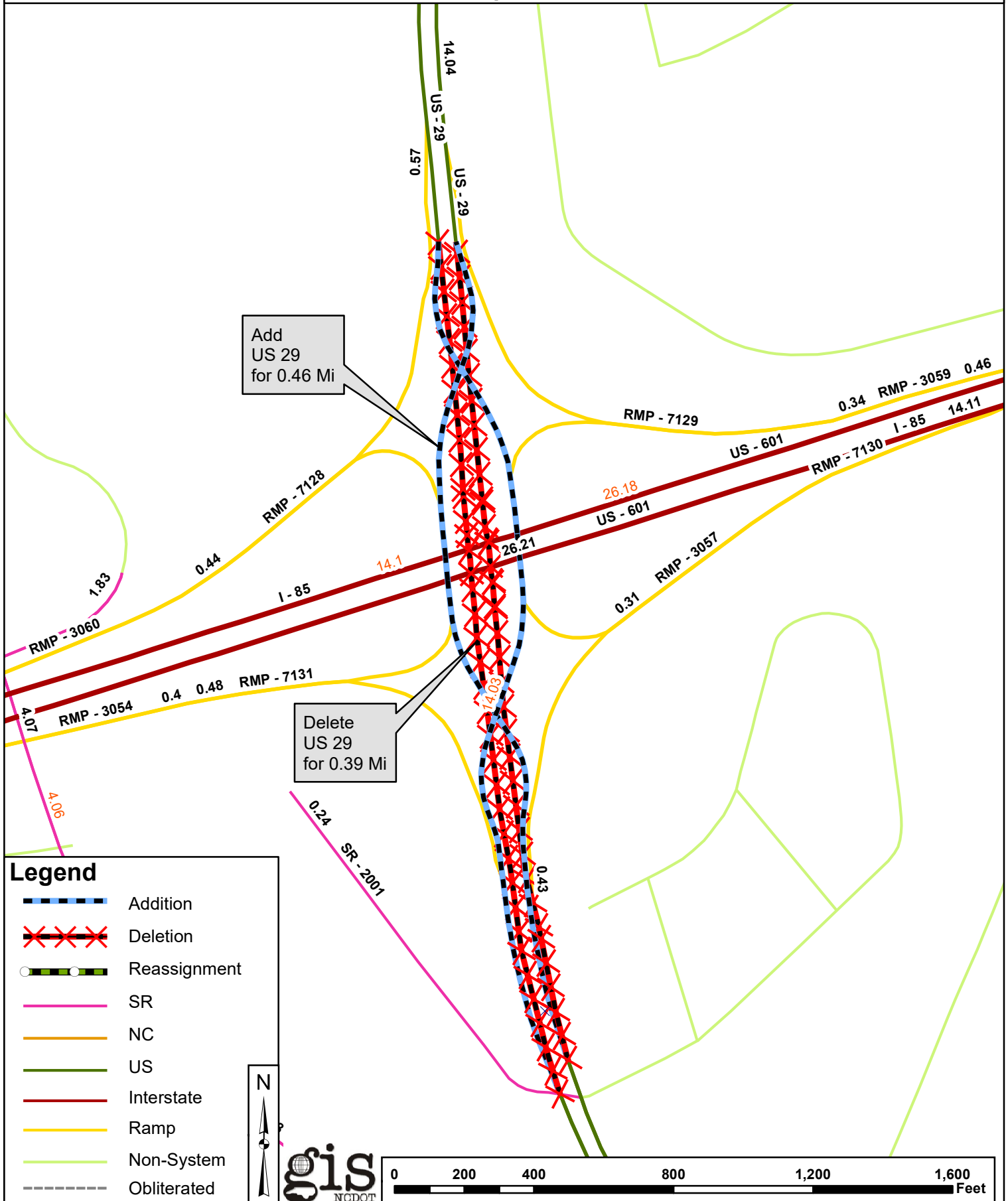
-  Addition
-  Deletion
-  Reassignment
-  SR
-  NC
-  US
-  Interstate
-  Ramp
-  Non-System
-  Obliterated



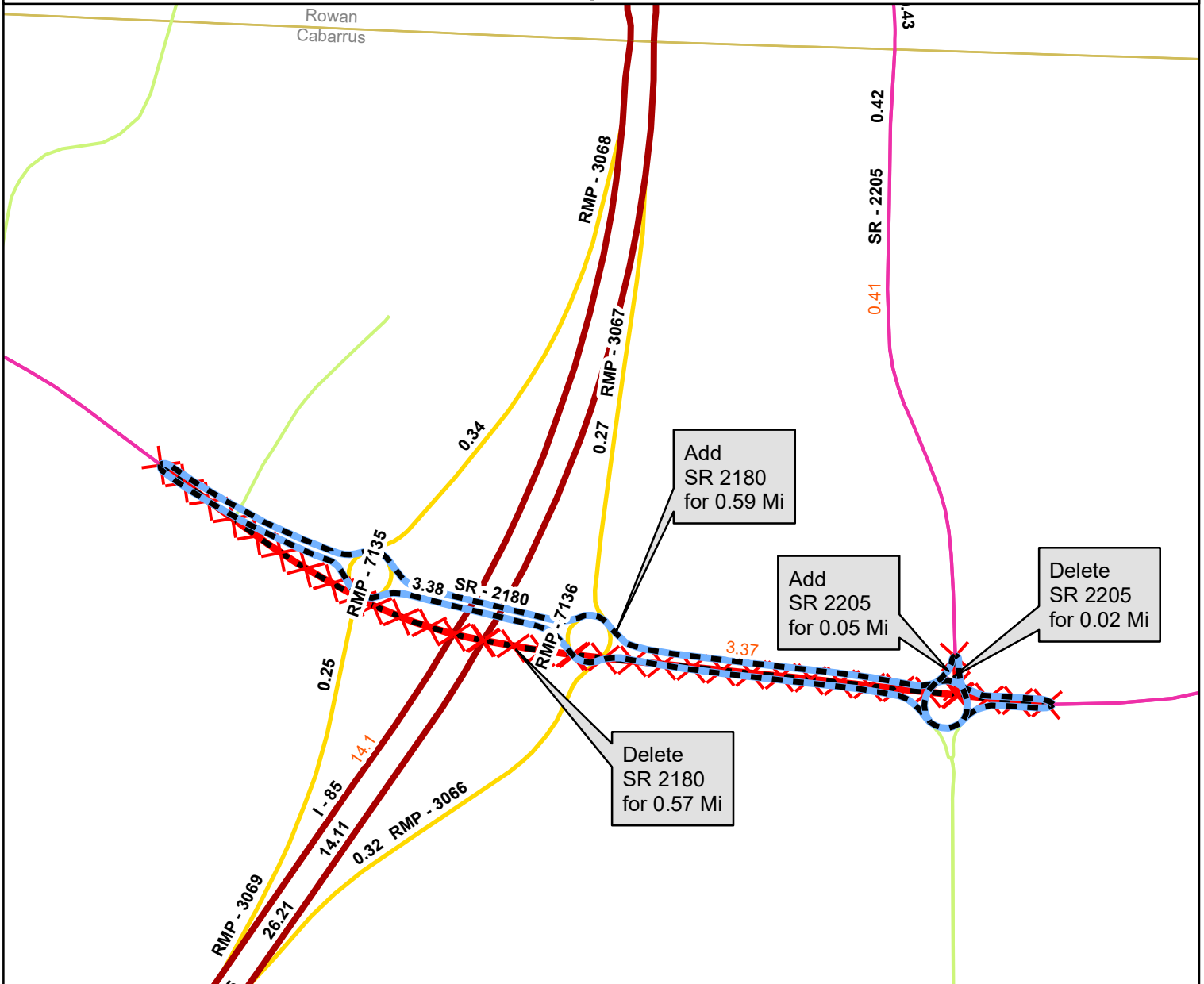
Map B



Map C



Map D



Legend

- Addition
- Deletion
- Reassignment
- SR
- NC
- US
- Interstate
- Ramp
- Non-System
- Obliterated
- County Boundary

gis
NCDOT

