



STATE OF NORTH CAROLINA
DEPARTMENT OF TRANSPORTATION

ROY COOPER
GOVERNOR

J. ERIC BOYETTE
SECRETARY

DATE: February 10, 2022
TO: S. Pat Ivey, PE
 Division Engineer
 Division 9
FROM: Erin Lesh, GISP
 Supervisor, Spatial Data Operations Group
 Geographic Information Systems Unit
SUBJECT: 2022 District 1 Road System Changes

The GIS Unit's Spatial Data Operations Group has been authorized to make the changes indicated below to the state road system. We request that you update the related maps and files in your offices and install appropriate road number signs, if necessary. If our system changes do not conform to the actual conditions in the field, please return this memorandum with recommendations.

Document Number	County	Approval Date
W-5313	ROWAN	07/12/2021

Questions or comments about changes should be referred to the GIS Help Desk at GISHelp@ncdot.gov.

Thank you for your assistance.

EAL

cc: BSIP
 Bridge Maintenance
 Division Right of Way
 IMG
 Pavement Management
 Permit Unit
 State Road Maintenance
 Traffic Engineering
 Traffic Surveys

MAILING ADDRESS:
 NC DEPARTMENT OF TRANSPORTATION
 GEOGRAPHIC INFORMATION SYSTEMS UNIT
 1521 MAIL SERVICE CENTER
 RALEIGH, NC 27699-1521

Telephone: (919) 707-2165
 FAX: 919-707-2210
 Customer Service: 1-877-368-4968
 Website: www.ncdot.gov

LOCATION:
 4101 CAPITAL BLVD.
 RALEIGH, NC 27604

2022 Road System Changes

TIP Name: W-5313
Date: 07/12/2021
County: ROWAN

Additions

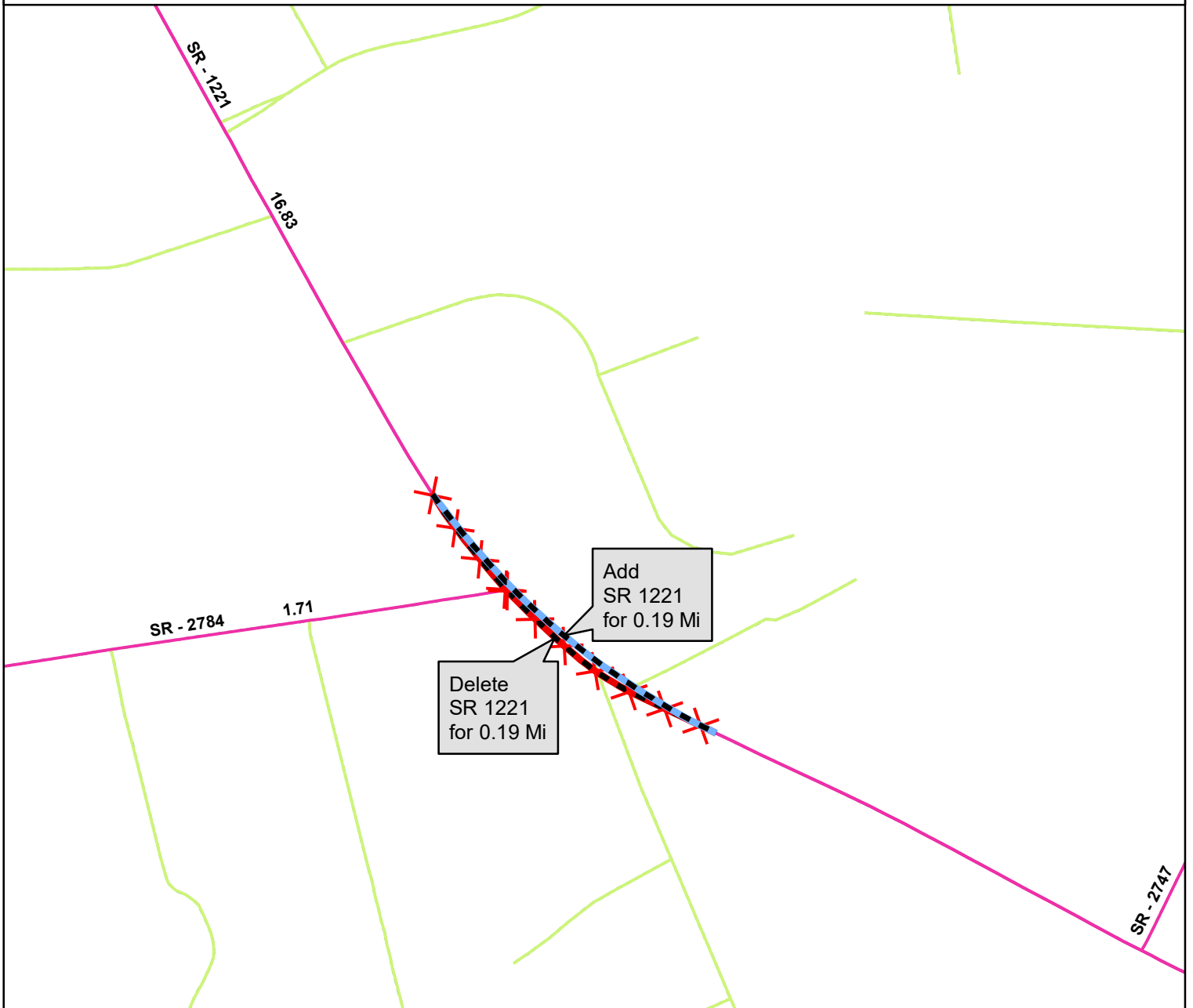
Route	Street Name	Mileage	Map
SR 1221		0.27	C
SR 2569		0.11	B
SR 2567		0.1	B
SR 1221		0.19	A

Deletions

Route	Street Name	Mileage	Map
SR 1221		0.26	C
SR 2569		0.1	B
SR 2567		0.1	B
SR 1221		0.19	A

Reassignments

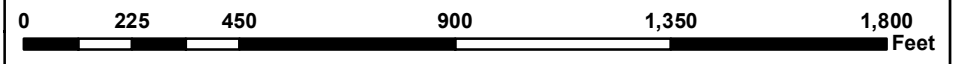
Existing Route	New Route	Street Name	Mileage	Map
None				

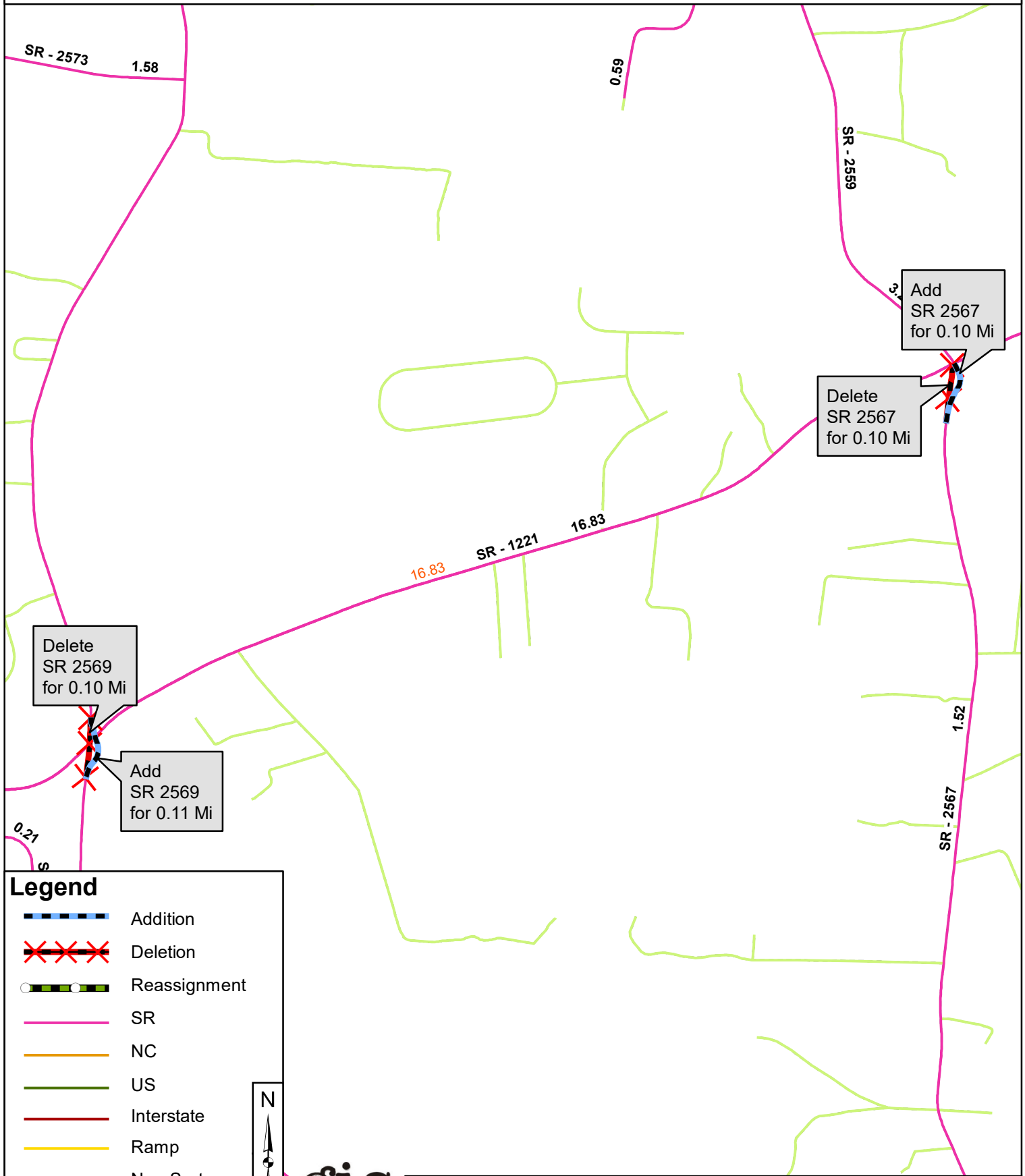


Legend

- Addition
- Deletion
- Reassignment
- SR
- NC
- US
- Interstate
- Ramp
- Non-System
- Obliterated

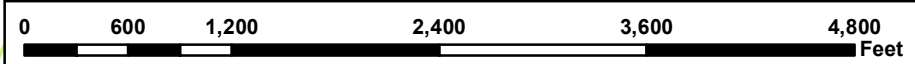
N

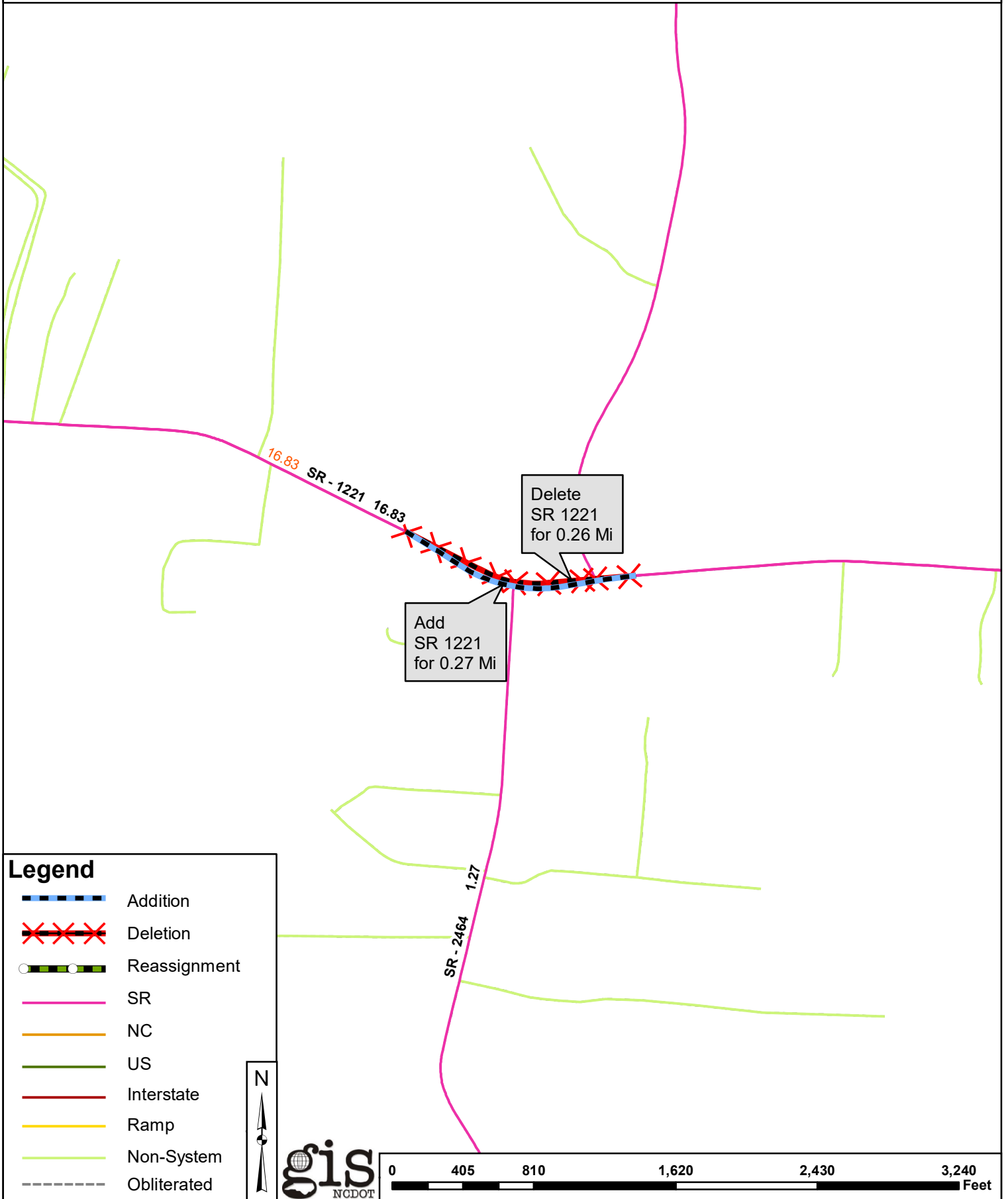




Legend

-  Addition
-  Deletion
-  Reassignment
-  SR
-  NC
-  US
-  Interstate
-  Ramp
-  Non-System
-  Obliterated





Legend

-  Addition
-  Deletion
-  Reassignment
-  SR
-  NC
-  US
-  Interstate
-  Ramp
-  Non-System
-  Obliterated

