



STATE OF NORTH CAROLINA
DEPARTMENT OF TRANSPORTATION

ROY COOPER
GOVERNOR

J.R. "JOEY" HOPKINS
SECRETARY

DATE: January 23, 2024
TO: Brett D. Canipe, PE
 Division Engineer
 Division 10
FROM: Erin Lesh, GISP
 Supervisor, Spatial Data Operations Group
 Geographic Information Systems Unit
SUBJECT: 2024 District 3 Road System Changes - **REVISED**

The GIS Unit's Spatial Data Operations Group has been authorized to make the changes indicated below to the state road system. We request that you update the related maps and files in your offices and install appropriate road number signs, if necessary. If our system changes do not conform to the actual conditions in the field, please return this memorandum with recommendations.

Document Number	County	Approval Date
R-3329-2559_090	UNION	11/27/2018

Questions or comments about changes should be referred to the GIS Help Desk at GISHelp@ncdot.gov.

Thank you for your assistance.

EAL

cc: BSIP
 Bridge Maintenance
 Division Right of Way
 IMG
 Pavement Management
 Permit Unit
 State Road Maintenance
 Traffic Engineering
 Traffic Surveys

MAILING ADDRESS:
 NC DEPARTMENT OF TRANSPORTATION
 GEOGRAPHIC INFORMATION SYSTEMS UNIT
 1521 MAIL SERVICE CENTER
 RALEIGH, NC 27699-1521

Telephone: (919) 707-2165
 FAX: 919-707-2210
 Customer Service: 1-877-368-4968
 Website: www.ncdot.gov

LOCATION:
 1020 BIRCH RIDGE DR
 RALEIGH, NC 27610

2024 Road System Changes

TIP Name: R-3329-2559_090
Date: 11/27/2018
County: UNION

Additions

Route	Street Name	Mileage	Map
US 74		0.76	B
US 74		0.62	L
SR 3729		0.19	A
SR 3909		0.37	A
SR 3730		0.35	A
SR 3731		0.23	B
SR 1523		0.14	C
SR 3732		0.4	C
SR 1520		0.55	D
SR 3733		0.14	D
SR 3735		0.08	D
SR 3736		1.38	E
SR 1508		0.46	F
SR 1367		0.61	F
SR 3737		0.1	G
SR 3738		0.12	G
SR 1514		0.4	G
SR 3739		0.39	G
SR 1508		0.25	H
SR 2790		0.17	I

Additions

Route	Street Name	Mileage	Map
SR 2791		0.17	J
SR 2792		0.2	J
SR 1817		1.08	J
SR 1786		0.17	K
SR 1758		0.5	K
SR 1819		0.11	L
SR 1753		0.25	L
SR 1754		0.43	L
SR 1994		0.61	L
SR 9002		18.67	M

Deletions

Route	Street Name	Mileage	Map
US 74		0.58	L
US 74		0.69	B
SR 1514		0.38	G
SR 1508		0.13	H
SR 2482		0.04	H
SR 1502		0.09	I
SR 1786		0.15	K
SR 1760		0.11	K
SR 1758		0.49	K
SR 1754		0.45	L
SR 1753		0.44	L
SR 2301		0.05	B

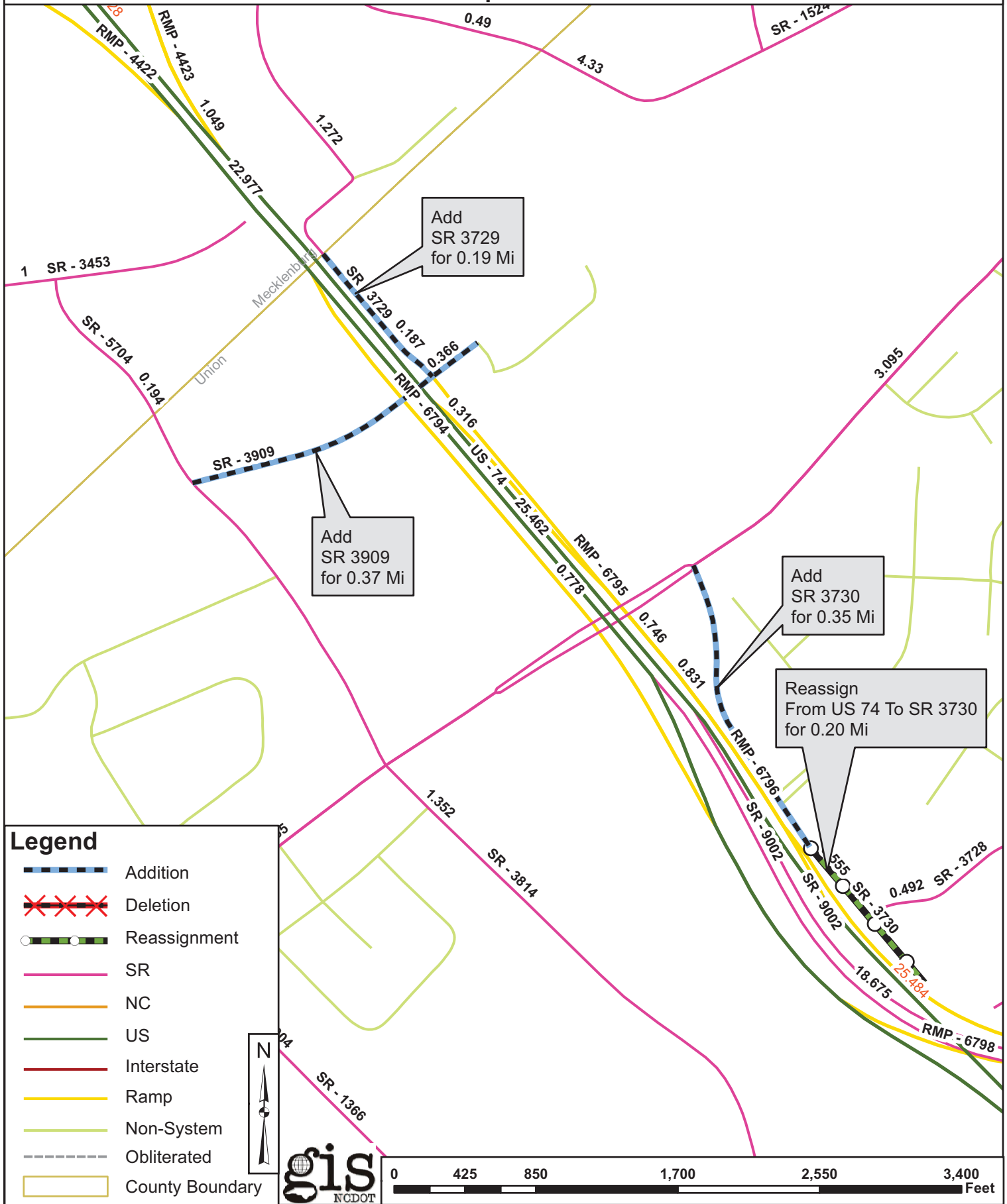
Deletions

Route	Street Name	Mileage	Map
SR 1523		0.18	C
SR 1520		0.44	D
SR 1580		0.14	D
SR 1576		0.07	D
SR 1508		0.25	F
SR 1367		0.57	F

Reassignments

Existing Route	New Route	Street Name	Mileage	Map
US 74	SR 3730		0.2	A
SR 1576	SR 3734		0.15	D
SR 1508	SR 3736		0.41	E
SR 1508	SR 3740		0.14	H
SR 1502	SR 3741		0.09	I
SR 1760	SR 1818		0.44	K
SR 1753	SR 1819		0.86	L

Map A



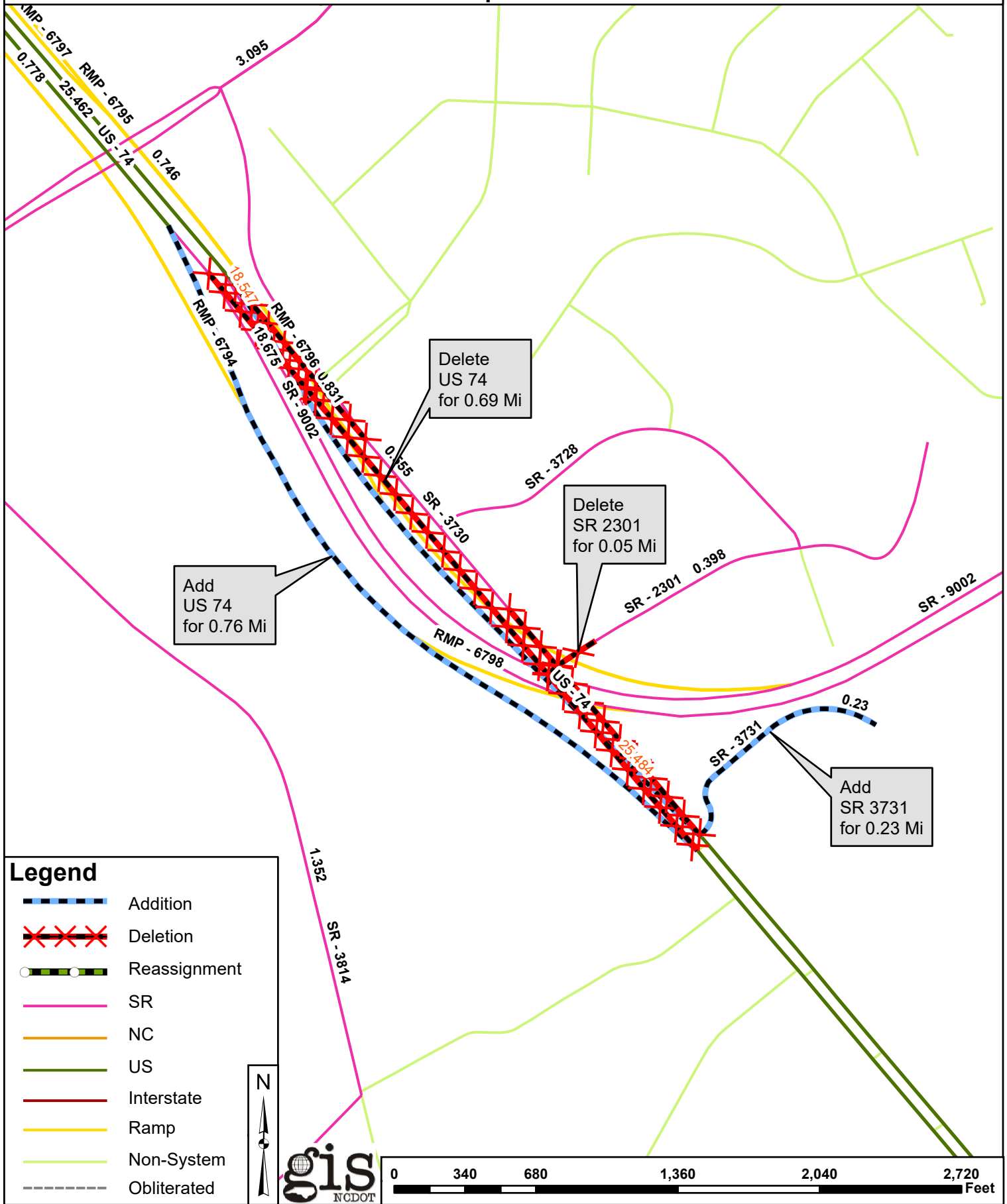
Legend

- Addition
- Deletion
- Reassignment
- SR
- NC
- US
- Interstate
- Ramp
- Non-System
- Obliterated
- County Boundary

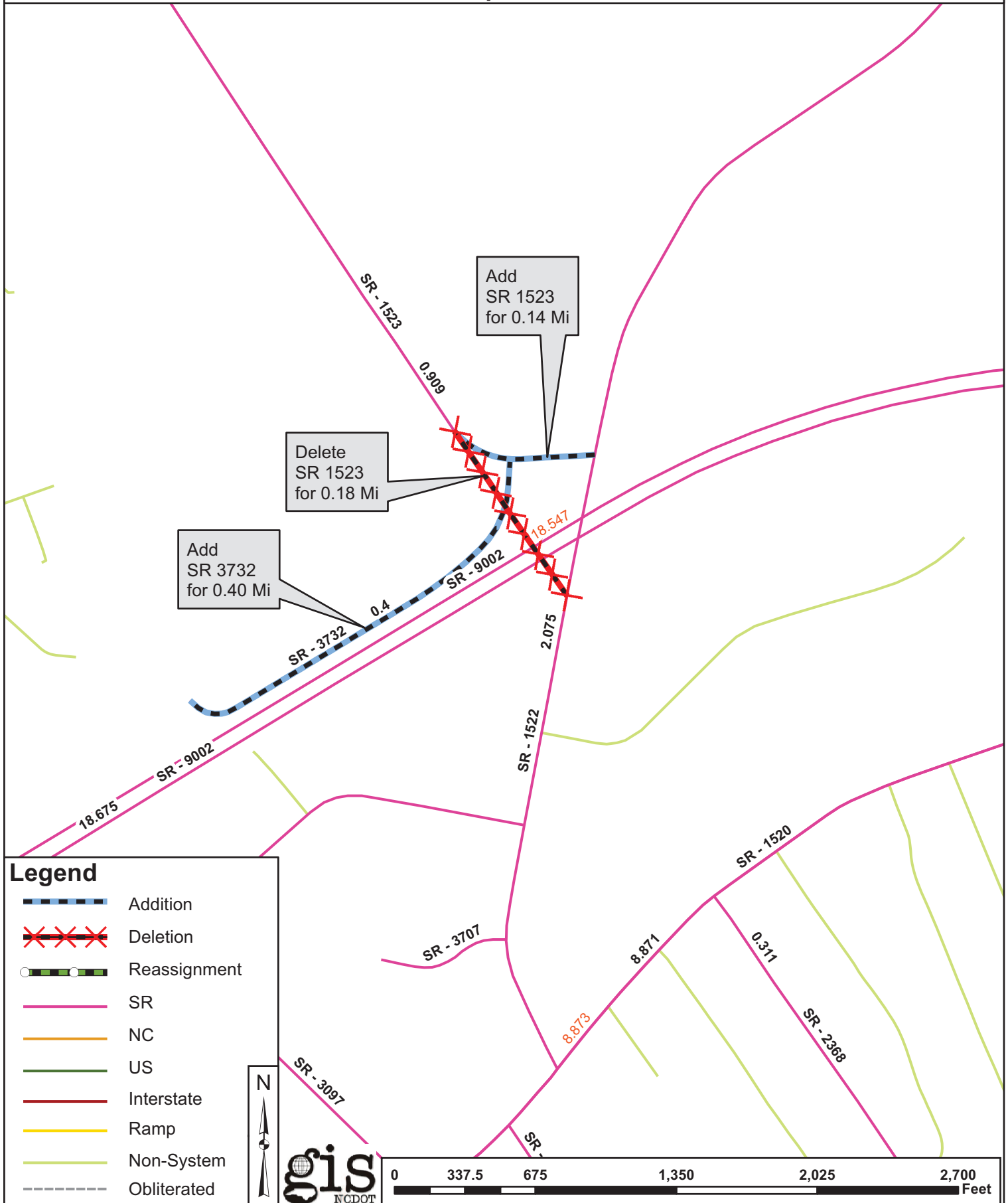
gis
NCDOT



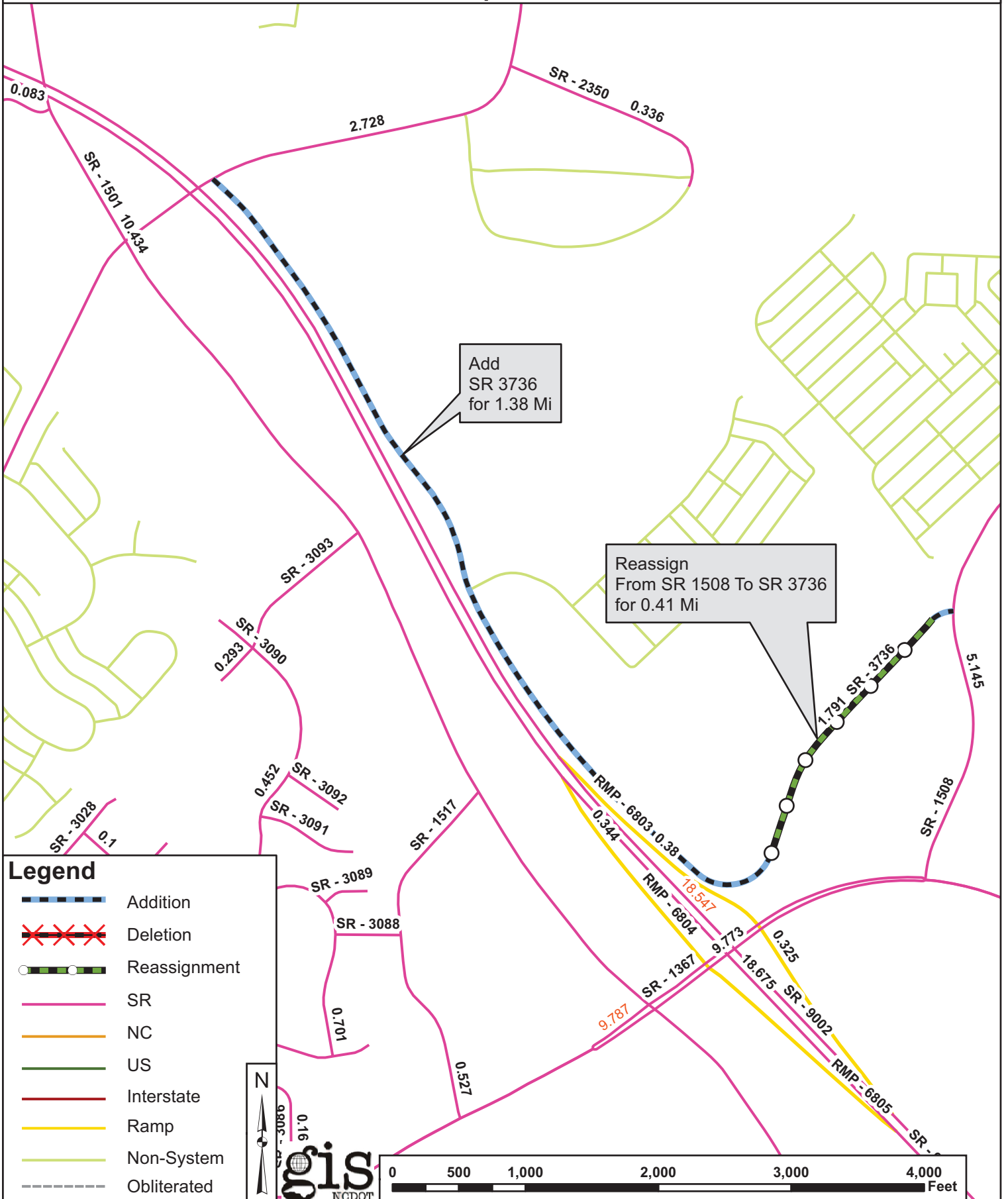
Map B



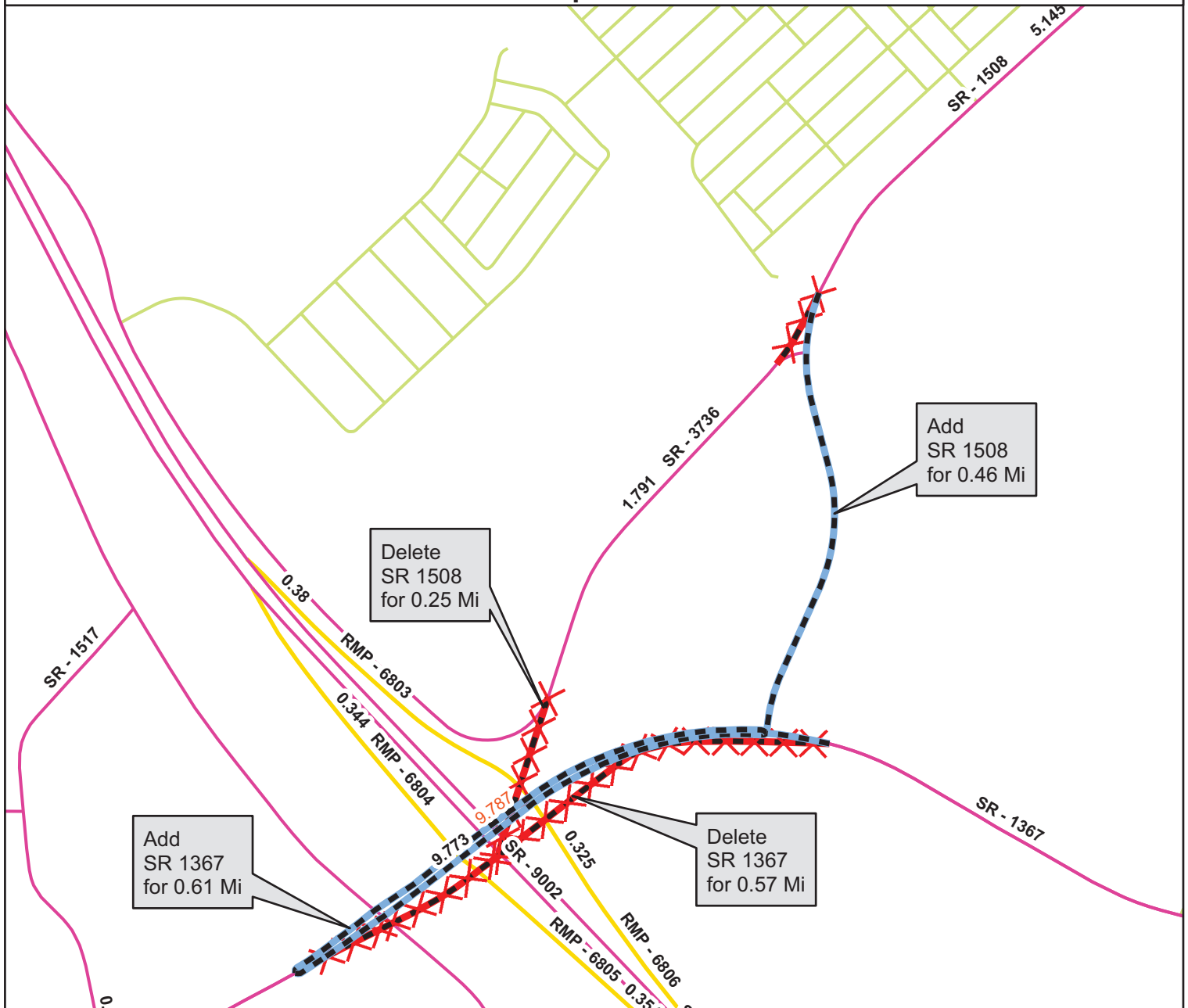
Map C



Map E



Map F



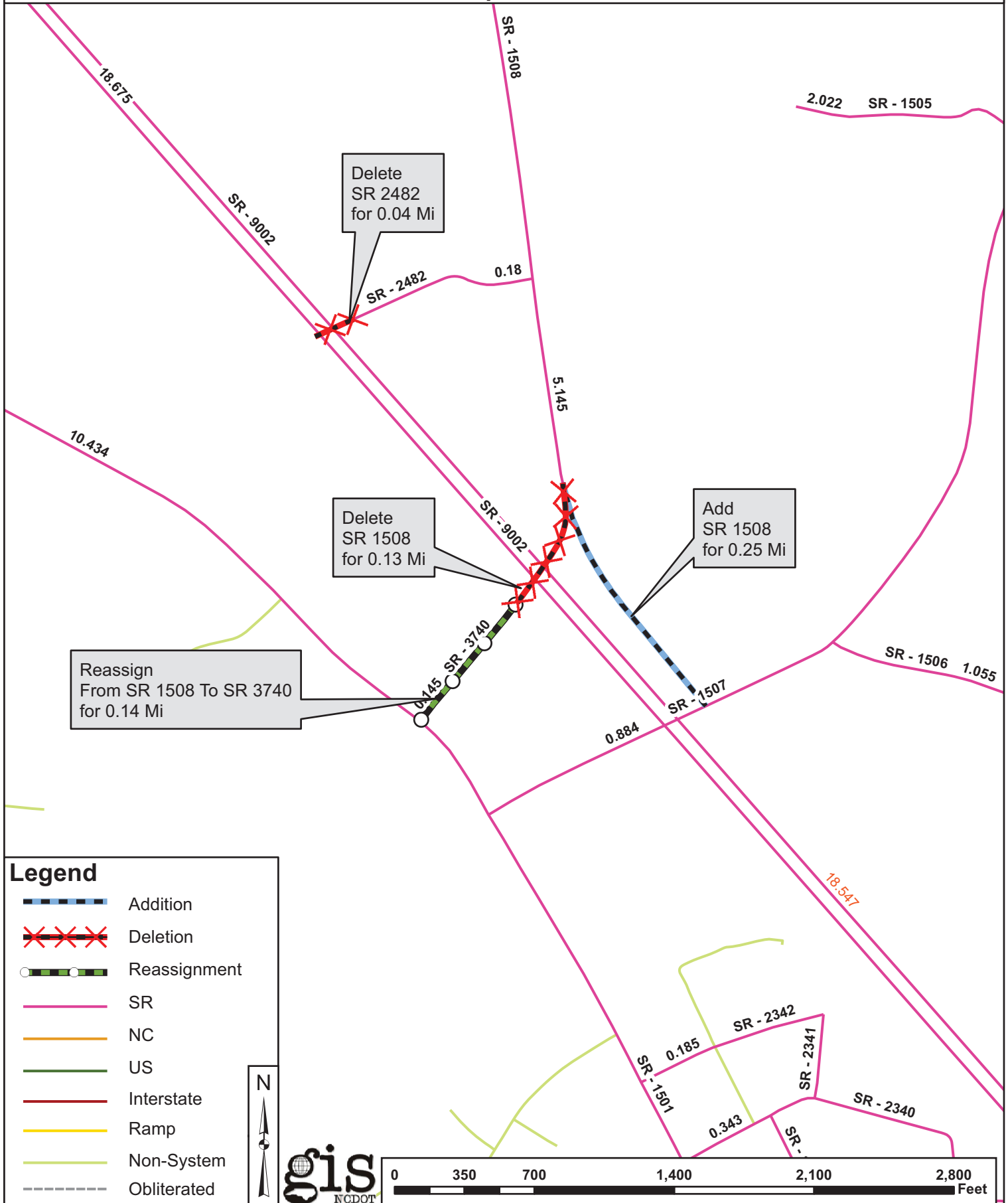
Legend

- Addition
- Deletion
- Reassignment
- SR
- NC
- US
- Interstate
- Ramp
- Non-System
- Obliterated

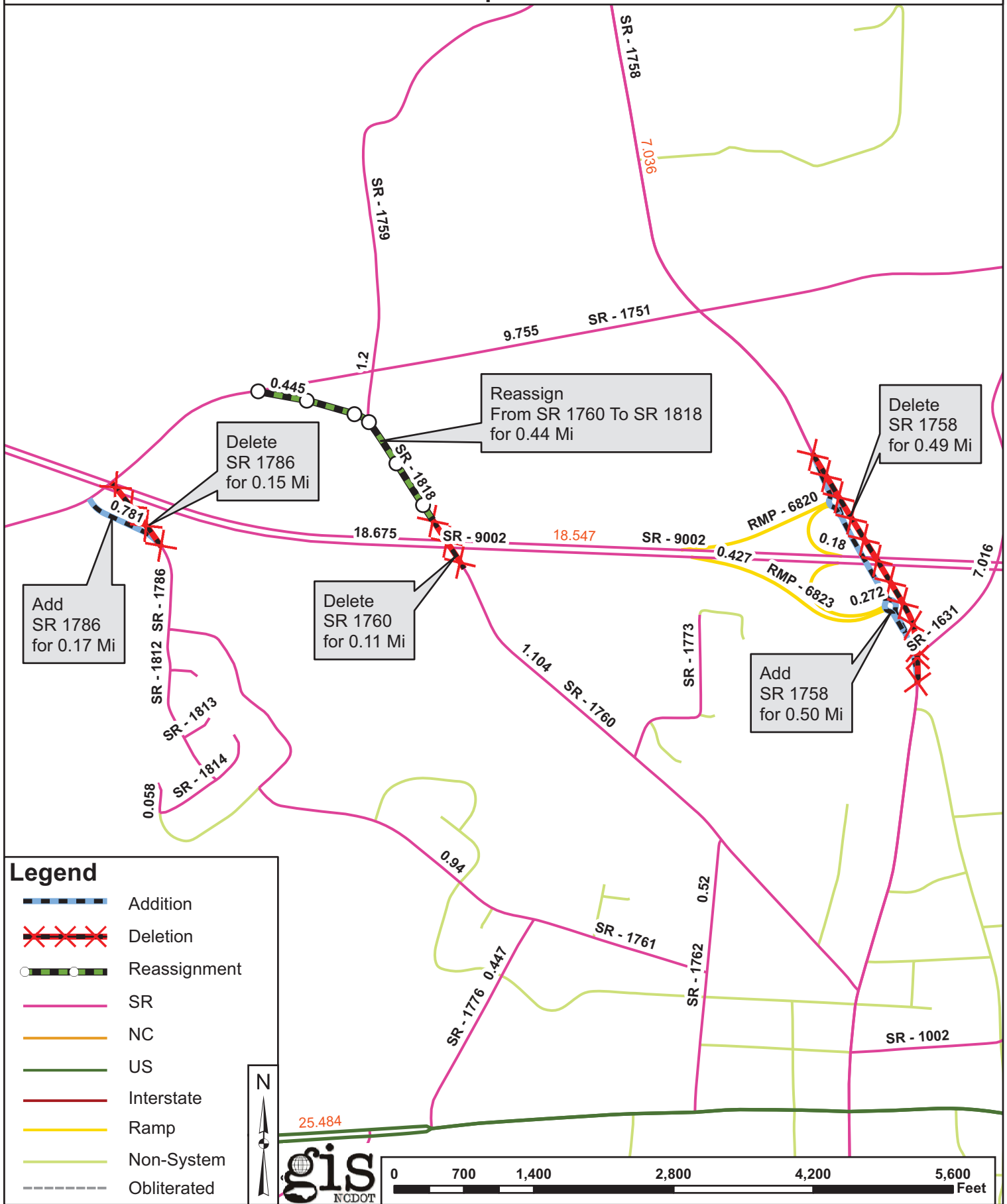
N
↑



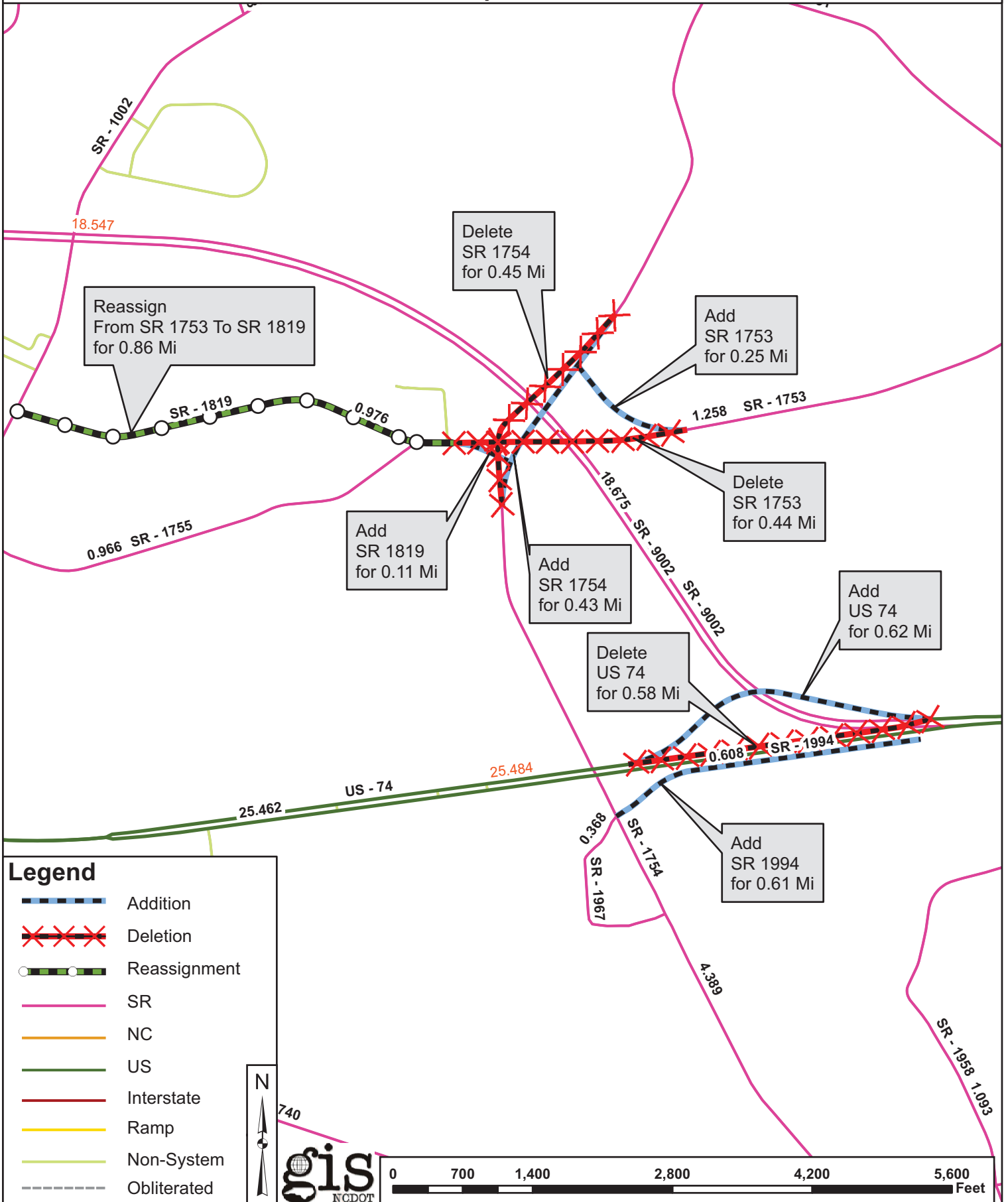
Map H



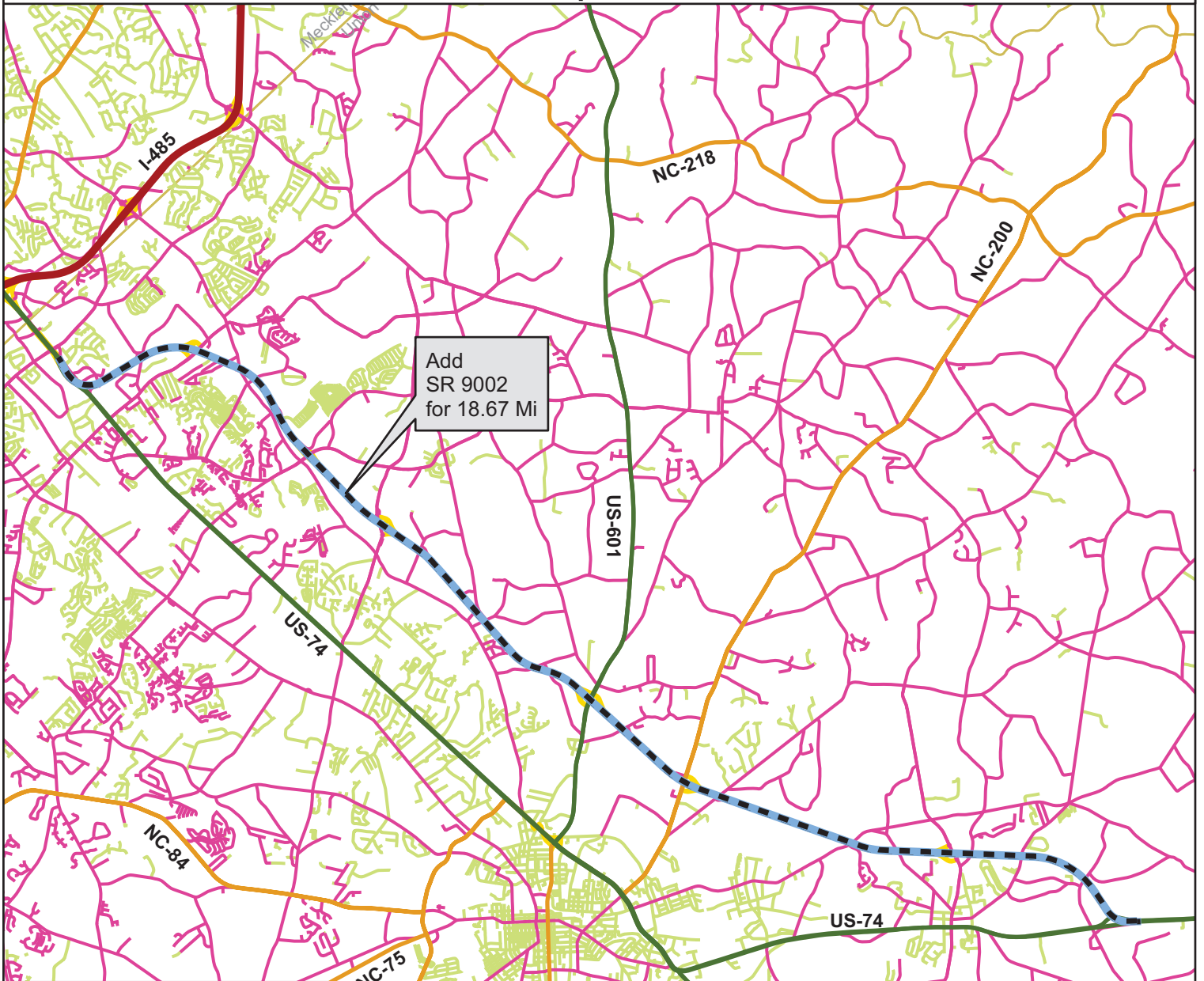
Map K



Map L



Map M



Legend

- Addition
- Deletion
- Reassignment
- SR
- NC
- US
- Interstate
- Ramp
- Non-System
- Obliterated
- County Boundary

