



STATE OF NORTH CAROLINA
DEPARTMENT OF TRANSPORTATION

ROY COOPER
GOVERNOR

JAMES H. TROGDON, III
SECRETARY

DATE: December 11, 2018
TO: Mr. S. Pat Ivey, PE
 Division Engineer
 Division 9
FROM: John C. Farley
 Manager
 Geographic Information Systems Unit
SUBJECT: 2018 District 1 Road System Changes

The GIS Unit's Data Conversion Group has been authorized to make the changes indicated below to the state road system. We request that you update the related maps and files in your offices and install appropriate road number signs, if necessary. If our system changes do not conform to the actual conditions in the field, please return this memorandum with recommendations.

Document Number	County	Approval Date
HTO_029_02-18	DAVIDSON	02/01/2018

Questions or comments about changes should be referred to the GIS Help Desk at GISHelp@ncdot.gov.

Thank you for your assistance.

JCF

- cc: BSIP
 Bridge Maintenance
 Division Right of Way
 IMG
 Pavement Management
 Permit Unit
 State Road Maintenance
 Traffic Engineering
 Traffic Surveys

MAILING ADDRESS:
 NC DEPARTMENT OF TRANSPORTATION
 GEOGRAPHIC INFORMATION SYSTEMS UNIT
 1521 MAIL SERVICE CENTER
 RALEIGH, NC 27699-1521

Telephone: (919) 707-2165
 FAX: 919-707-2210
 Customer Service: 1-877-368-4968
 Website: www.ncdot.gov

LOCATION:
 4101 CAPITAL BLVD.
 RALEIGH, NC 27604

2018 Road System Changes

Project Name: HTO_029_02-18
Date: 02/01/2018
County: DAVIDSON

Additions

Route	Street Name	Mileage	Map
None			

Deletions

Route	Street Name	Mileage	Map
None			

Reassignments

Existing Route	New Route	Street Name	Mileage	Map
US 52	I 285/US 52		5.06	
US 52/NC 8	I 285/US 52/NC 8		9.35	
I 85 BUS/US 29/US 52/US 70	I 285/I 85 BUS/US 29/US 52/US 70		4.15	

Document Number: HTO_029_02-18

Route Number(s): I 285

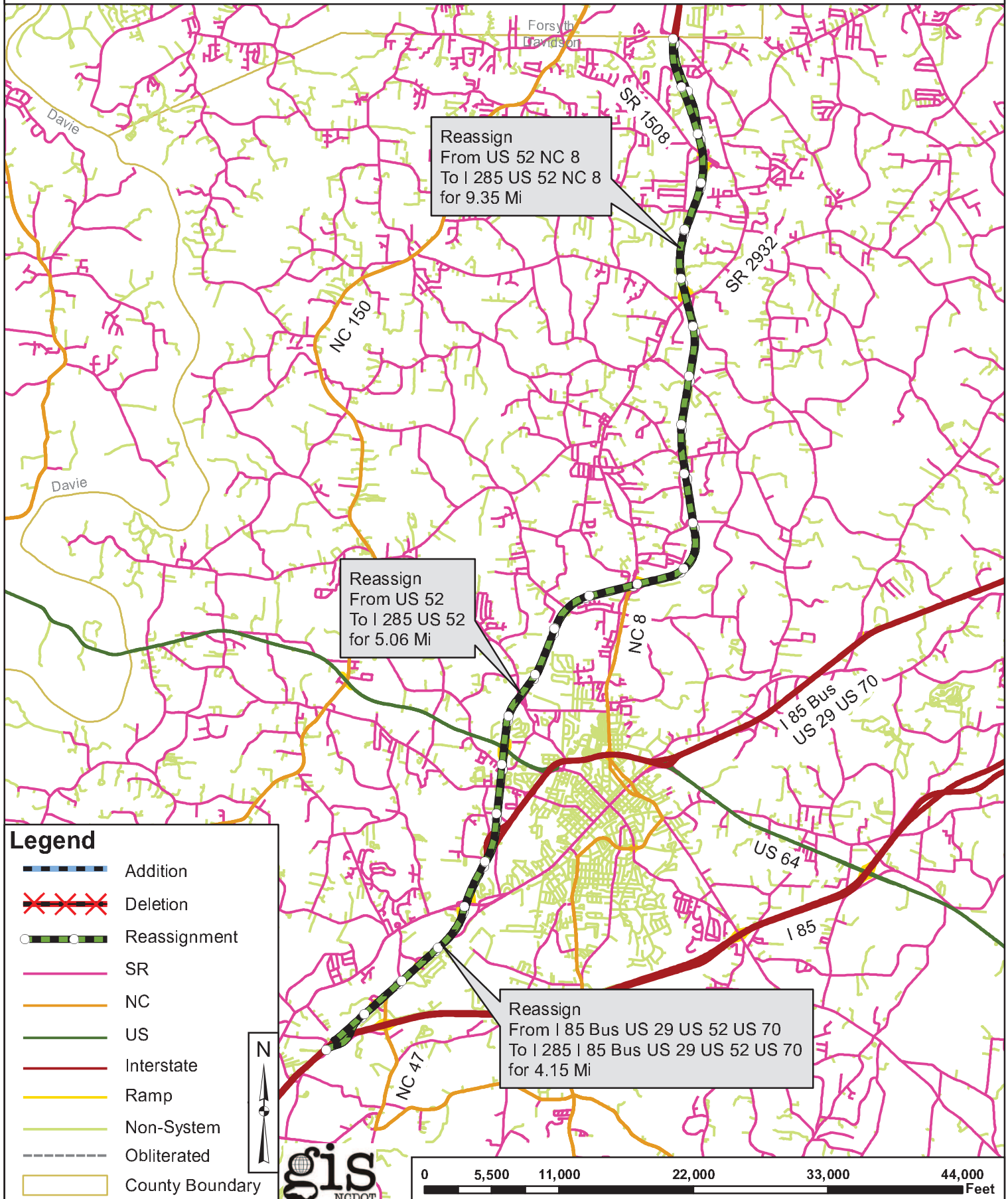
Map Date: 12/11/18

County: Davidson

I 85 Bus US 29 US 70

US 52 NC 8

Approval Date: 2/01/18



Reassign
 From US 52 NC 8
 To I 285 US 52 NC 8
 for 9.35 Mi

Reassign
 From US 52
 To I 285 US 52
 for 5.06 Mi

Reassign
 From I 85 Bus US 29 US 52 US 70
 To I 285 I 85 Bus US 29 US 52 US 70
 for 4.15 Mi

Legend

- Addition
- Deletion
- Reassignment
- SR
- NC
- US
- Interstate
- Ramp
- Non-System
- Obliterated
- County Boundary

gis
NCDOT

