



STATE OF NORTH CAROLINA
DEPARTMENT OF TRANSPORTATION

ROY COOPER
GOVERNOR

JAMES H. TROGDON, III
SECRETARY

DATE: July 27, 2018
TO: Mr. Louis Mitchell, PE
Division Engineer
Division 10
FROM: Mr. John C. Farley, GISP, CPM
Manager
Geographic Information Systems Unit
SUBJECT: 2018 District 1 Road System Changes

The GIS Unit's Data Conversion Group has been authorized to make the changes indicated below to the state road system. We request that you update the related maps and files in your offices and install appropriate road number signs, if necessary. If our system changes do not conform to the actual conditions in the field, please return this memorandum with recommendations.

Document Number	County	Approval Date
R-2246B	CABARRUS	9/1/2017

Questions or comments about changes should be referred to the GIS Help Desk at GISHelp@ncdot.gov.
Thank you for your assistance.

JCF

cc: BSIP
Bridge Maintenance
Division Right of Way
IMG
Pavement Management
Permit Unit
State Road Maintenance
Traffic Engineering
Traffic Surveys

Mailing Address:
NC DEPARTMENT OF TRANSPORTATION
GEOGRAPHIC INFORMATION SYSTEMS
1521 MAIL SERVICE CENTER
RALEIGH, NC 27699-1521

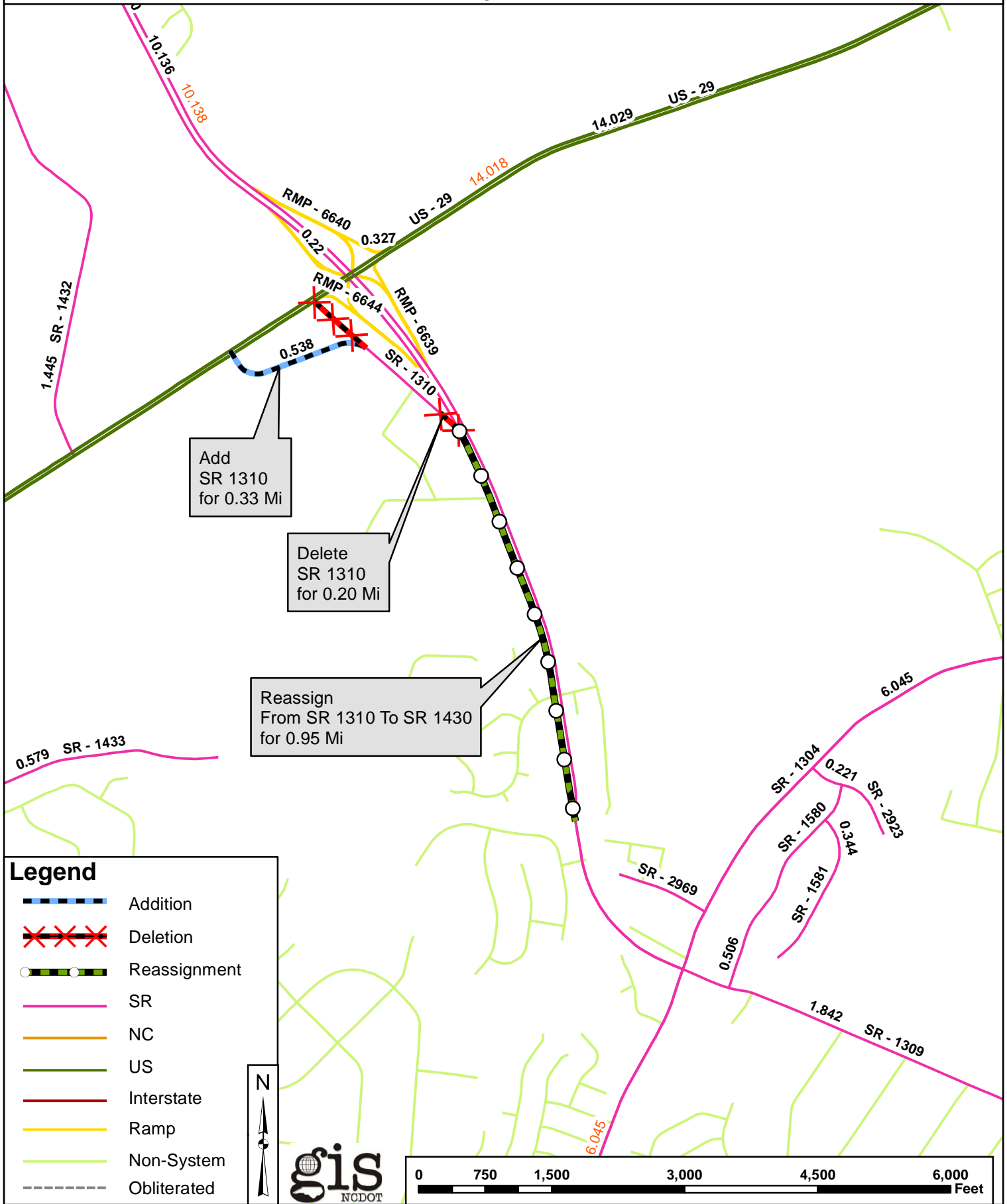
Telephone: (919) 707-2165
Fax: (919) 707-2210
Customer Service: 1-877-368-4968
Website: www.ncdot.gov

Location:
4101 CAPITAL BLVD.
RALEIGH, NC 27604
FAX: (919) 707-2214

2018 ROAD SYSTEM CHANGES

TIP	COUNTY	APPROVAL DATE	NEW ROUTE	EXISTING ROUTE	STREET NAME	LENGTH (miles)	TYPE OF CHANGE	REMARKS (See Attached Map)
R-2246B	CABARRUS	9/1/2017	SR 1430	SR 1310		0.95	REASSIGNMENT VIA TIP	MAP A, SEGMENT
R-2246B	CABARRUS	9/1/2017	SR 2969	SR 1310		0.20	REASSIGNMENT VIA TIP	MAP B, SEGMENT
R-2246B	CABARRUS	9/1/2017		SR 1310		0.33	SYSTEM ADDITION - EXISTING VIA TIP	MAP A, SEGMENT
R-2246B	CABARRUS	9/1/2017		SR 1580		0.01	SYSTEM ADDITION - EXISTING VIA TIP	MAP B, SEGMENT
R-2246B	CABARRUS	9/1/2017		SR 1430		0.35	SYSTEM ADDITION - EXISTING VIA TIP	MAP B, SEGMENT
R-2246B	CABARRUS	9/1/2017		SR 1309		0.16	SYSTEM ADDITION - EXISTING VIA TIP	MAP B, SEGMENT
R-2246B	CABARRUS	9/1/2017		SR 1310		0.20	SYSTEM DELETION VIA TIP	MAP A, SEGMENT
R-2246B	CABARRUS	9/1/2017		SR 1310		0.09	SYSTEM DELETION VIA TIP	MAP B, SEGMENT
R-2246B	CABARRUS	9/1/2017		SR 1309		0.16	SYSTEM DELETION VIA TIP	MAP B, SEGMENT

Map A



Map B

